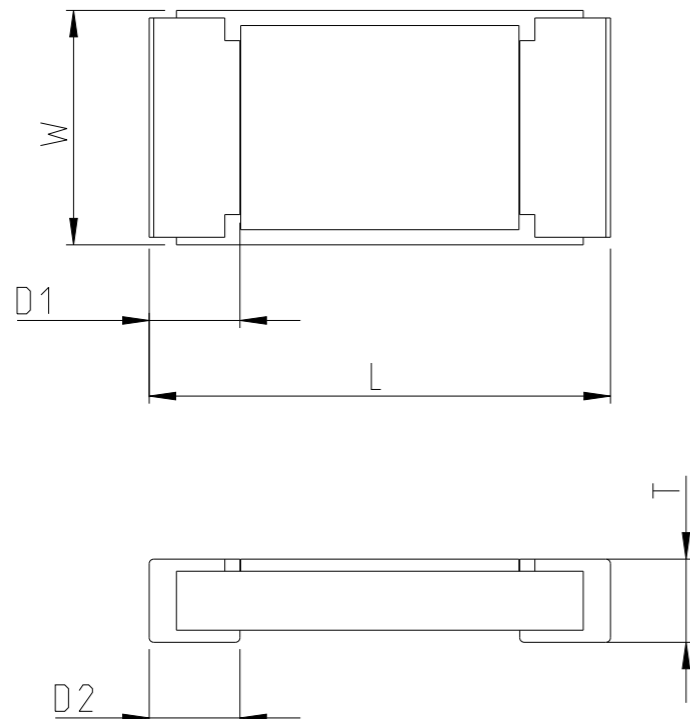


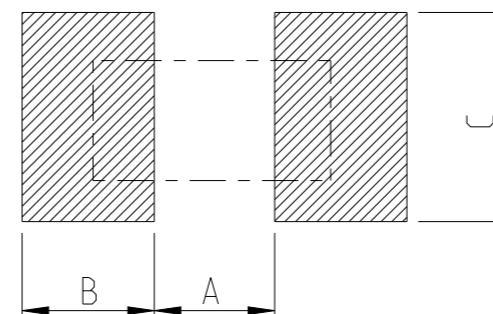
P	LTR	DESCRIPTION	DATE	DWN	APVD
	BA	NEW DRAWING	06FEB2013	KR	TN
	BA1	SCHEDULE AND LAND PATTERN ADDED	08MAY2023	DM	AP

FOR FURTHER INFORMATION SEE DATA SHEET FOR CURRENT SENSING METAL CHIP RESISTOR - TYPE TLM SERIES



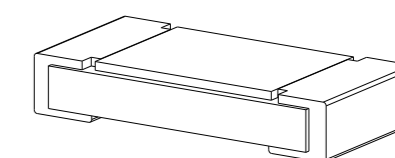
TYPE	SIZE (Inch)	RESISTANCE RANGE (mΩ)	L	W	T	D1	D2
TLM2B	1206	10 - 29	3.05±0.15	1.55±0.15	0.58±0.15	0.50±0.25	0.90±0.25
		30 - 100	3.05±0.15	1.55±0.15	0.55±0.15	0.50±0.25	0.60±0.25

RECOMMENDED LAND PATTERN



RESISTANCE RANGE (mΩ)	A (mm)	B (mm)	C (mm)
10 - 29	0.90	1.70	1.70
30 - 100	1.50	1.40	1.70

RoHS Compliant


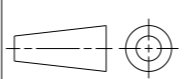


THIS DRAWING IS A CONTROLLED DOCUMENT.		DWN 06FEB2013 RAGHAVENDRA K														
DIMENSIONS: mm		CHK 06FEB2013 ALLAN P														
TOLERANCES UNLESS OTHERWISE SPECIFIED:		APVD 06FEB2013 TONY N	NAME SMD CURRENT SENSE METAL CHIP RESISTOR - TYPE TLM 1206 SERIES													
<table border="0"> <tr> <td>0 PLC</td> <td>±</td> </tr> <tr> <td>1 PLC</td> <td>±</td> </tr> <tr> <td>2 PLC</td> <td>±</td> </tr> <tr> <td>3 PLC</td> <td>±</td> </tr> <tr> <td>4 PLC</td> <td>±</td> </tr> <tr> <td>ANGLES</td> <td>±</td> </tr> </table>		0 PLC	±	1 PLC	±	2 PLC	±	3 PLC	±	4 PLC	±	ANGLES	±	PRODUCT SPEC	SIZE CAGE CODE DRAWING NO RESTRICTED TO	
0 PLC	±															
1 PLC	±															
2 PLC	±															
3 PLC	±															
4 PLC	±															
ANGLES	±															
MATERIAL		APPLICATION SPEC	A 3 00779 C=2176156													
FINISH		WEIGHT	SCALE SHEET REV													
		0.011 Gram	20:1 1 OF 2 BA1													
		CUSTOMER DRAWING														

REVISIONS

P	LTR	DESCRIPTION	DATE	DWN	APVD
-		SEE SHEET 1	-	-	-

SCHEDULE				
TCPN	CATALOGUE NUMBER	PART DESCRIPTION	PART STATUS	
2176156-1	TLM2BER01JTD	TLM 1206 0.5W R01 5% 100PPM 5K RL	PRODUCTION	
2176156-2	TLM2BER012JTD	TLM 1206 0.5W R012 5% 100PPM 5K RL	PRODUCTION	
2176156-3	TLM2BER015JTD	TLM 1206 0.5W R015 5% 100PPM 5K RL	PRODUCTION	
2176156-4	TLM2BER018JTD	TLM 1206 0.5W R018 5% 100PPM 5K RL	PRODUCTION	
2176156-5	TLM2BER022JTD	TLM 1206 0.5W R022 5% 100PPM 5K RL	PRODUCTION	
2176156-6	TLM2BER027JTD	TLM 1206 0.5W R027 5% 100PPM 5K RL	PRODUCTION	
2176156-7	TLM2BER033JTD	TLM 1206 0.5W R033 5% 100PPM 5K RL	PRODUCTION	
2176156-8	TLM2BER039JTD	TLM 1206 0.5W R039 5% 100PPM 5K RL	PRODUCTION	
2176156-9	TLM2BER047JTD	TLM 1206 0.5W R047 5% 100PPM 5K RL	PRODUCTION	
1-2176156-0	TLM2BER056JTD	TLM 1206 0.5W R056 5% 100PPM 5K RL	PRODUCTION	
1-2176156-1	TLM2BER068JTD	TLM 1206 0.5W R068 5% 100PPM 5K RL	PRODUCTION	
1-2176156-2	TLM2BER082JTD	TLM 1206 0.5W R082 5% 100PPM 5K RL	PRODUCTION	
1-2176156-3	TLM2BER10JTD	TLM 1206 0.5W R10 5% 100PPM 5K RL	PRODUCTION	
1-2176156-4	TLM2BER01FTD	TLM 1206 0.5W R01 1% 100PPM 5K RL	PRODUCTION	
1-2176156-5	TLM2BER011FTD	TLM 1206 0.5W R011 1% 100PPM 5K RL	PRODUCTION	
1-2176156-6	TLM2BER012FTD	TLM 1206 0.5W R012 1% 100PPM 5K RL	PRODUCTION	
1-2176156-7	TLM2BER013FTD	TLM 1206 0.5W R013 1% 100PPM 5K RL	PRODUCTION	
1-2176156-8	TLM2BER015FTD	TLM 1206 0.5W R015 1% 100PPM 5K RL	PRODUCTION	
1-2176156-9	TLM2BER016FTD	TLM 1206 0.5W R016 1% 100PPM 5K RL	PRODUCTION	
2-2176156-0	TLM2BER018FTD	TLM 1206 0.5W R018 1% 100PPM 5K RL	PRODUCTION	
2-2176156-1	TLM2BDR020FTD	TLM 1206 0.5W R020 1% 50PPM 5K RL	PRODUCTION	
2-2176156-2	TLM2BDR022FTD	TLM 1206 0.5W R022 1% 50PPM 5K RL	PRODUCTION	
2-2176156-3	TLM2BDR024FTD	TLM 1206 0.5W R024 1% 50PPM 5K RL	PRODUCTION	
2-2176156-4	TLM2BDR027FTD	TLM 1206 0.5W R027 1% 50PPM 5K RL	PRODUCTION	
2-2176156-5	TLM2BDR030FTD	TLM 1206 0.5W R030 1% 50PPM 5K RL	PRODUCTION	
2-2176156-6	TLM2BDR033FTD	TLM 1206 0.5W R033 1% 50PPM 5K RL	PRODUCTION	
2-2176156-7	TLM2BDR036FTD	TLM 1206 0.5W R036 1% 50PPM 5K RL	PRODUCTION	
2-2176156-8	TLM2BDR039FTD	TLM 1206 0.5W R039 1% 50PPM 5K RL	PRODUCTION	
2-2176156-9	TLM2BDR043FTD	TLM 1206 0.5W R043 1% 50PPM 5K RL	PRODUCTION	
3-2176156-0	TLM2BDR047FTD	TLM 1206 0.5W R047 1% 50PPM 5K RL	PRODUCTION	
3-2176156-1	TLM2BDR051FTD	TLM 1206 0.5W R051 1% 50PPM 5K RL	PRODUCTION	
3-2176156-2	TLM2BDR056FTD	TLM 1206 0.5W R056 1% 50PPM 5K RL	PRODUCTION	
3-2176156-3	TLM2BDR062FTD	TLM 1206 0.5W R062 1% 50PPM 5K RL	PRODUCTION	
3-2176156-4	TLM2BDR068FTD	TLM 1206 0.5W R068 1% 50PPM 5K RL	PRODUCTION	
3-2176156-5	TLM2BDR075FTD	TLM 1206 0.5W R075 1% 50PPM 5K RL	PRODUCTION	
3-2176156-6	TLM2BDR082FTD	TLM 1206 0.5W R082 1% 50PPM 5K RL	PRODUCTION	
3-2176156-7	TLM2BDR091FTD	TLM 1206 0.5W R091 1% 50PPM 5K RL	PRODUCTION	
3-2176156-8	TLM2BDR10FTD	TLM 1206 0.5W R10 1% 50PPM 5K RL	PRODUCTION	
3-2176156-9	TLM2BDR090FTD	TLM 1206 0.5W R090 1% 50PPM 5K RL	PRODUCTION	

THIS DRAWING IS A CONTROLLED DOCUMENT.		DWN 06FEB2013 RAGHAVENDRA K	 TE Connectivity	
DIMENSIONS: mm		CHK 06FEB2013 ALLAN P		
		TOLERANCES UNLESS OTHERWISE SPECIFIED:		NAME SMD CURRENT SENSE METAL CHIP RESISTOR - TYPE TLM 1206 SERIES
		0 PLC ± 1 PLC ± 2 PLC ± 3 PLC ± 4 PLC ± ANGLES ± FINISH ±		
MATERIAL		APVD 06FEB2013 TONY N		PRODUCT SPEC
		APPLICATION SPEC		SIZE
		WEIGHT 0.011 Gram		CAGE CODE
		CUSTOMER DRAWING		DRAWING NO
		SCALE 20:1		RESTRICTED TO
		SHEET 2 OF 2		REV BA1