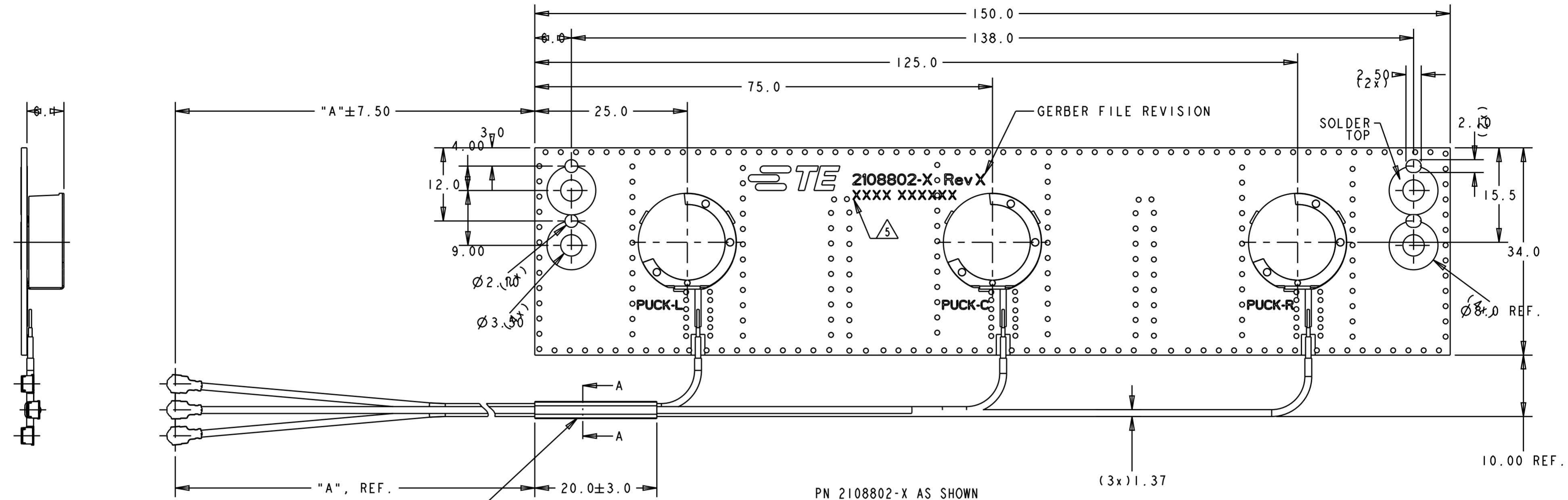
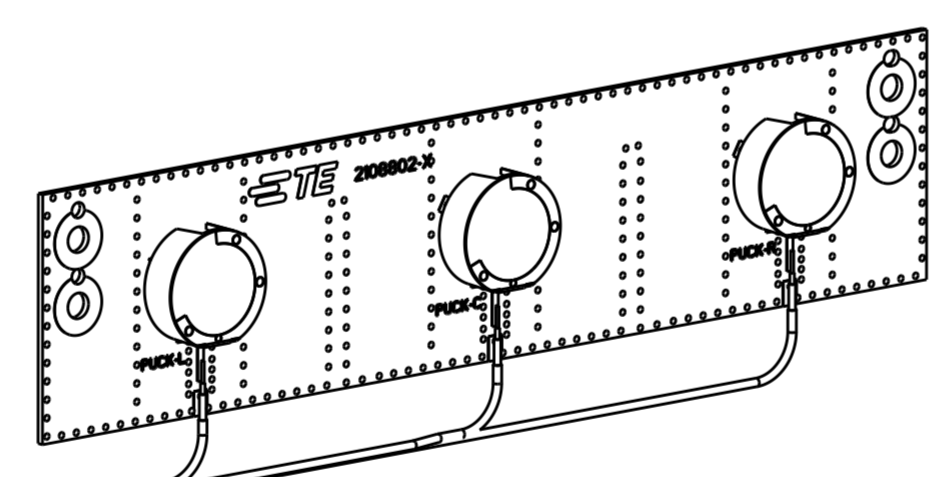
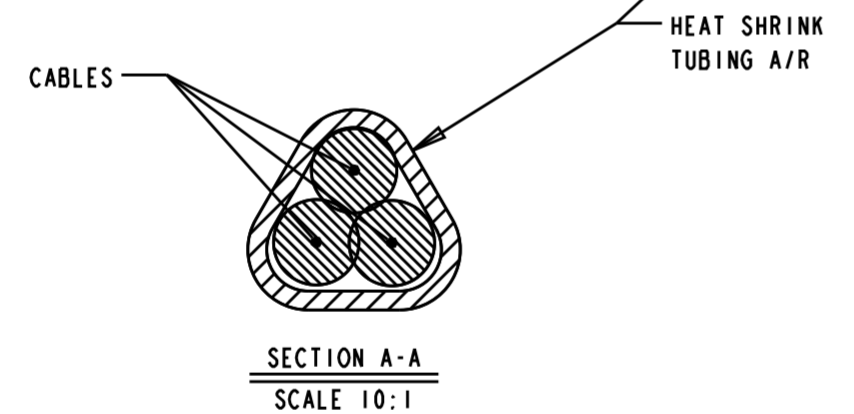


REVISIONS				
P	LTR	DESCRIPTION	DATE	APVD
A		PRODUCTION RELEASED	23.NOV.2020	DW JH



PN 2108802-X AS SHOWN

(3x) 1.37



SCALE 1:1

- NOTE : UNLESS OTHERWISE SPECIFIED
- FABRICATE TO MEET IPC - 6012, CLASS 2.  
INSPECT TO MEET IPC - A - 600, CLASS 2.
  - MATERIAL : FR4 PCB, OVERALL THICKNESS 0.92±0.10mm  
CABLE ASSEMBLY : COAXIAL CABLE, OD1.37mm  
CONN : 1-PEX 20351 OR EQUIVALENT
  - PACKAGING : SINGULATED PARTS TO BE SECURELY SHRINK WARPPED, BAGGED OR VACUUM PACKED IN BULK
  - CONSULT TE CONNECTIVITY DATA SHEET DS2108802.
- △ SILKSCREEN : WITHE EPOXY INK.  
A: TE LOGO, TE P/N  
B: WORD REV., FOLLOWED BY THE LASTEST REVISION LETTER. AS SHOWN.  
C: 4 DIGITS DATE CODE: FIRST 2 DIGITS FOR THE WEEK CODE AND THE 2 DIGITS FOR THE YEAR CODE.  
OTHERS: SPECIFIC TE SOURCE CODE NUMBER DIGITS AS REQUIRED.

220.00mm	2108802-3
420.00mm	2108802-2
620.00mm	2108802-1
"A"	PART NUMBER

THIS DRAWING IS A CONTROLLED DOCUMENT.		DWN <b>DW.PARK</b> 07JUL2020	<b>STE</b> TE Connectivity
		CHK <b>H.SHIN</b> 07JUL2020	
		APVD <b>JH.KIM</b> 07JUL2020	
		NAME <b>PUCK ANTENNA, MHF, Wi-Fi DUAL BAND</b>	
DIMENSIONS:	TOLERANCES UNLESS OTHERWISE SPECIFIED:	PRODUCT SPEC <b>108-61449</b>	SIZE <b>A2</b>
mm	0 PLC ± 1 PLC ±0.65 2 PLC ±0.20 3 PLC ± 4 PLC ±	APPLICATION SPEC	CAGE CODE <b>00779</b>
MATERIAL	ANGLES ± FINISH	WEIGHT	DRAWING NO. <b>C-2108802</b>
		CUSTOMER DRAWING	RESTRICTED TO
		SCALE <b>2:1</b>	SHEET <b>1</b> OF <b>1</b> REV <b>A</b>