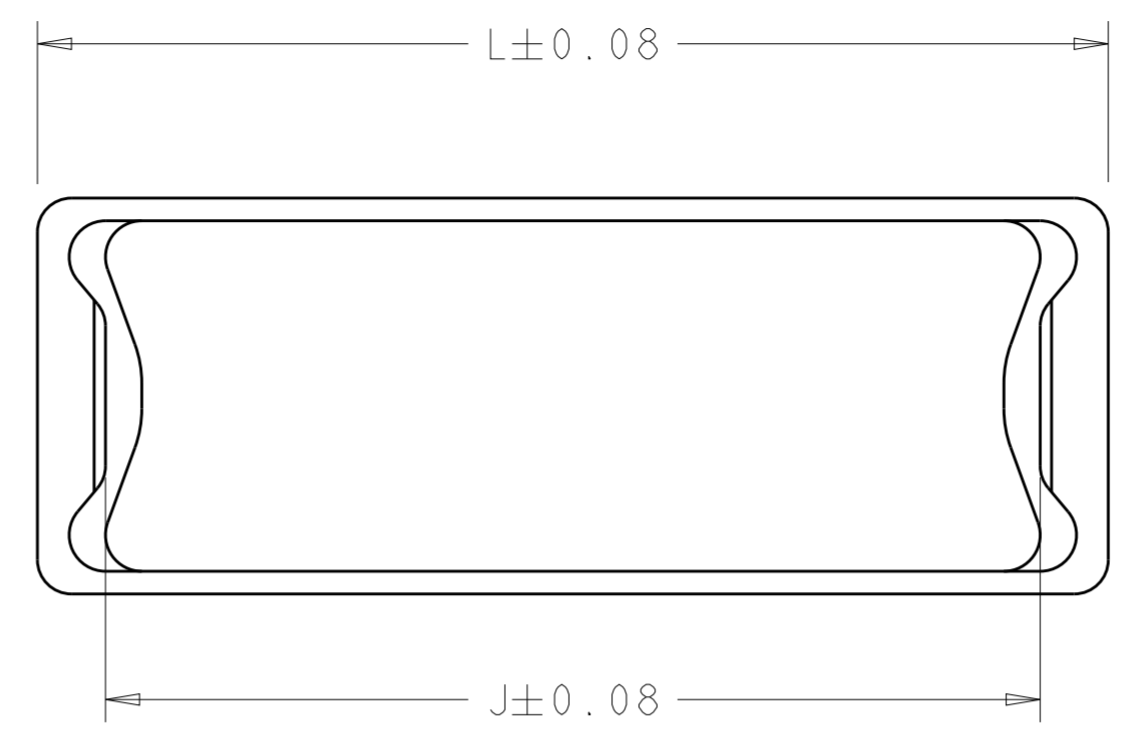
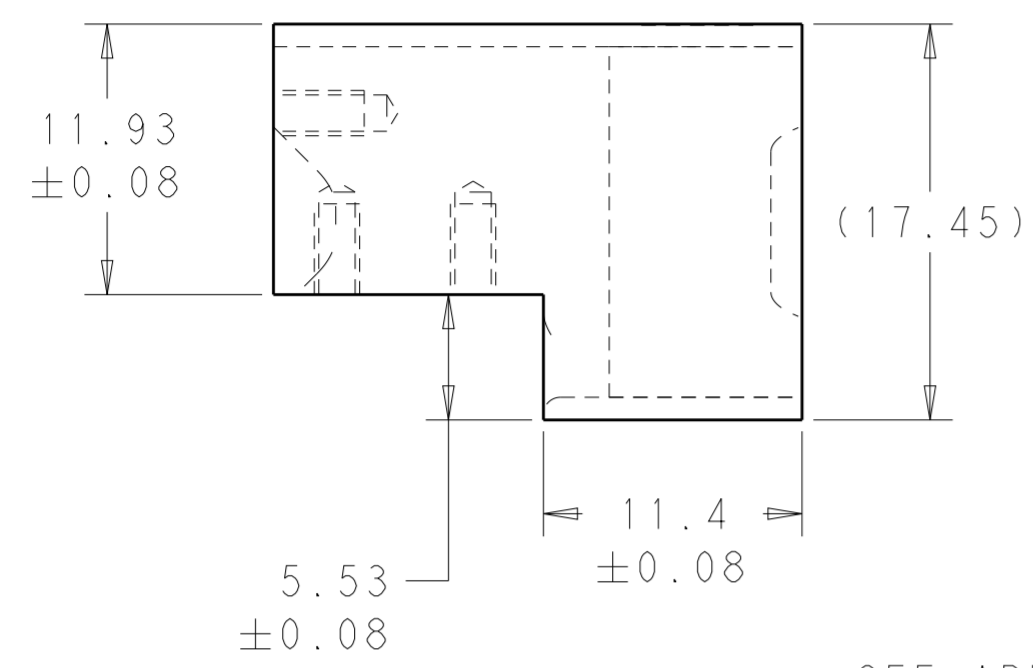


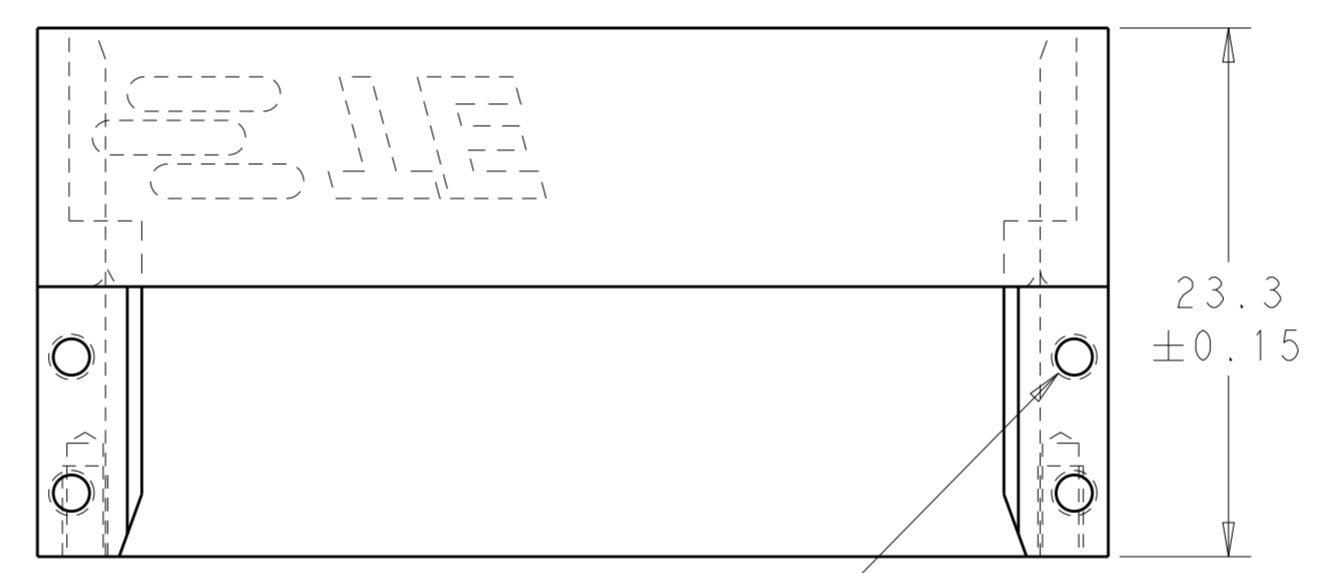
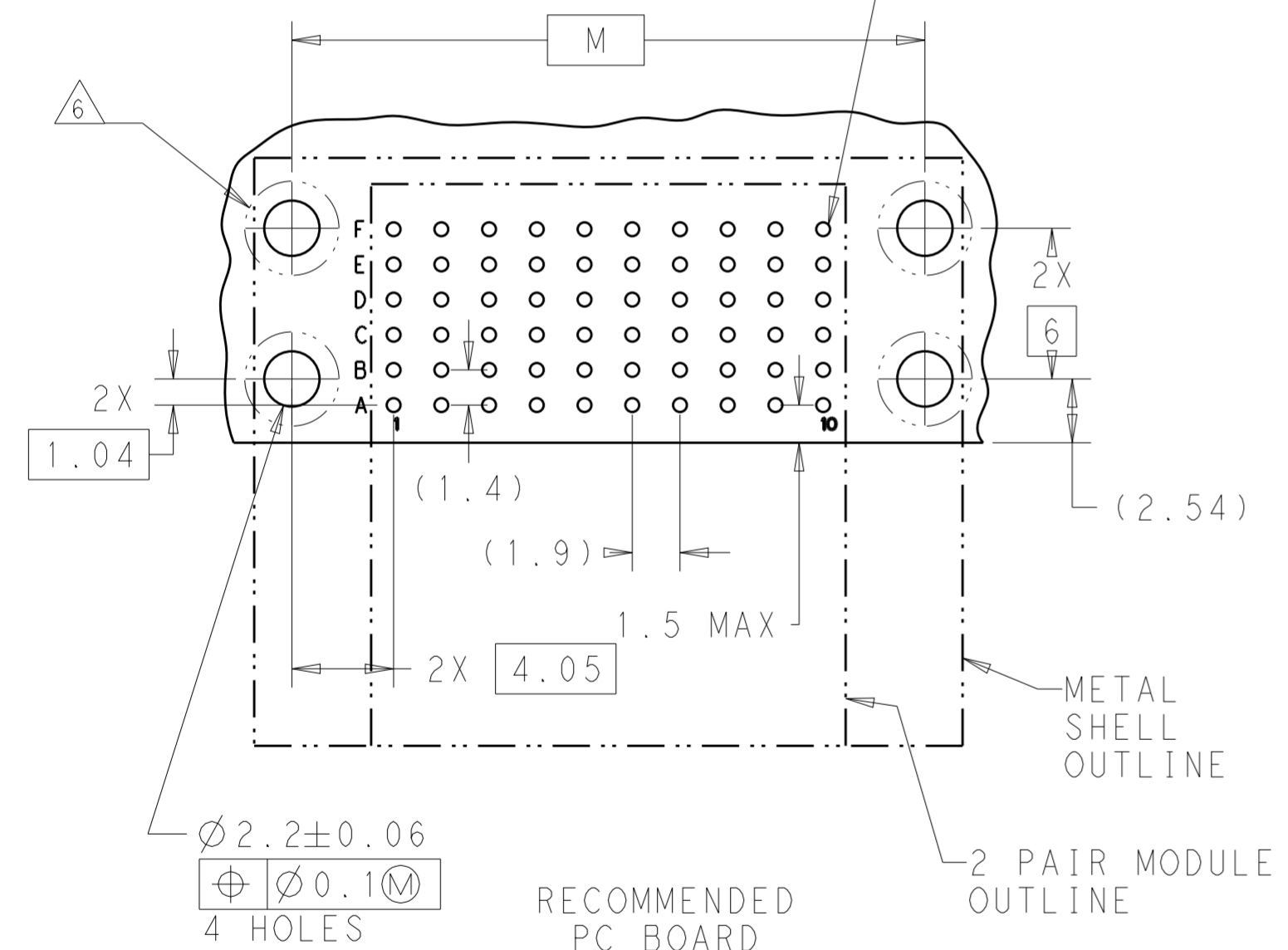
THIS DRAWING IS UNPUBLISHED. RELEASED FOR PUBLICATION 20  
 © COPYRIGHT 20 BY - ALL RIGHTS RESERVED.

LOC		DIST		REVISIONS			
P	LTR	DESCRIPTION	DATE	DWN	APVD		
1		DRAWN	13AUG2012	NPR	NPR		
2		ADDED INFO TO TITLE BLOCK	30AUG2012	NPR	NPR		
3		UPDATED TO SHOW LOGO	03JAN2013	NPR	NPR		
4		CHANGED PCB LAYOUT DIM SCHEME	13MAR2013	NPR	NPR		



SCALE 2:1

SEE APP SPEC 114-13267  
 AND CUSTOMER DRAWING 2102087  
 FOR MORE PC BOARD DETAILS



MOUNTING HOLES  
 M2x0.4  
 4mm DP MIN  
 4 HOLES

- 1 MATERIAL: ALUMINUM, 6061, TEMPER T6
- 2 FINISH: TRIVALENT CHROMATE CONVERSION COATING PER MIL-DTL-5541, TYPE II, CLASS 3.
- 3. FOR USE WITH 2-PAIR FORTIS Zd CENTER MODULES 2102087 & 2102096 ONLY (NOT INCLUDED).
- 4 PCB MOUNTING HARDWARE NOT INCLUDED. SCREW LENGTH DEPENDENT ON PCB THICKNESS
- 5. INSTRUCTION SHEET: 408-32056
- 6 ANNULAR RINGS PLATED AROUND ALL 4 MOUNTING HOLE LOCATIONS ON TOP AND BOTTOM OF PCB

THIS PRINT IS  
**PRELIMINARY**  
 UNQUALIFIED PRODUCT  
 CONTACT PRODUCT ENGINEERING  
 BEFORE USING THIS PRINT

120.2	123.2	117.2	16.7	60	1-2102107-2
101.2	104.2	98.2	14.9	50	1-2102107-0
82.2	85.2	79.2	13.1	40	2102107-8
63.2	66.2	60.2	11.4	30	2102107-6
44.2	47.2	41.2	9.6	20	2102107-4
25.2	28.2	22.2	7.8	10	2102107-2
M	L	J	WEIGHT (g)	NUMBER OF COLUMNS	PART NUMBER

THIS DRAWING IS A CONTROLLED DOCUMENT.		DWN	N. P. RUFFIN	13AUG2012
DIMENSIONS: mm		CHK	N. P. RUFFIN	30AUG2012
TOLERANCES UNLESS OTHERWISE SPECIFIED:		APVD	N. P. RUFFIN	30AUG2012
0 PLC	±	PRODUCT SPEC		
1 PLC	±0.5	108-2409		
2 PLC	±0.13	APPLICATION SPEC		
3 PLC	±0.013	114-13267		
4 PLC	±0.001	WEIGHT TABLE		
ANGLES	±	Customer Drawing		
FINISH	2	SCALE 3:1		

DWN		N. P. RUFFIN		13AUG2012
CHK		N. P. RUFFIN		30AUG2012
APVD		N. P. RUFFIN		30AUG2012
TE Connectivity NAME SHELL, FORTIS Zd, 2-PAIR METAL SHELL				
SIZE	CAGE CODE	DRAWING NO	RESTRICTED TO	
A2	00779	C-2102107	-	
Customer Drawing			SCALE 3:1	SHEET 1 OF 1 REV 4