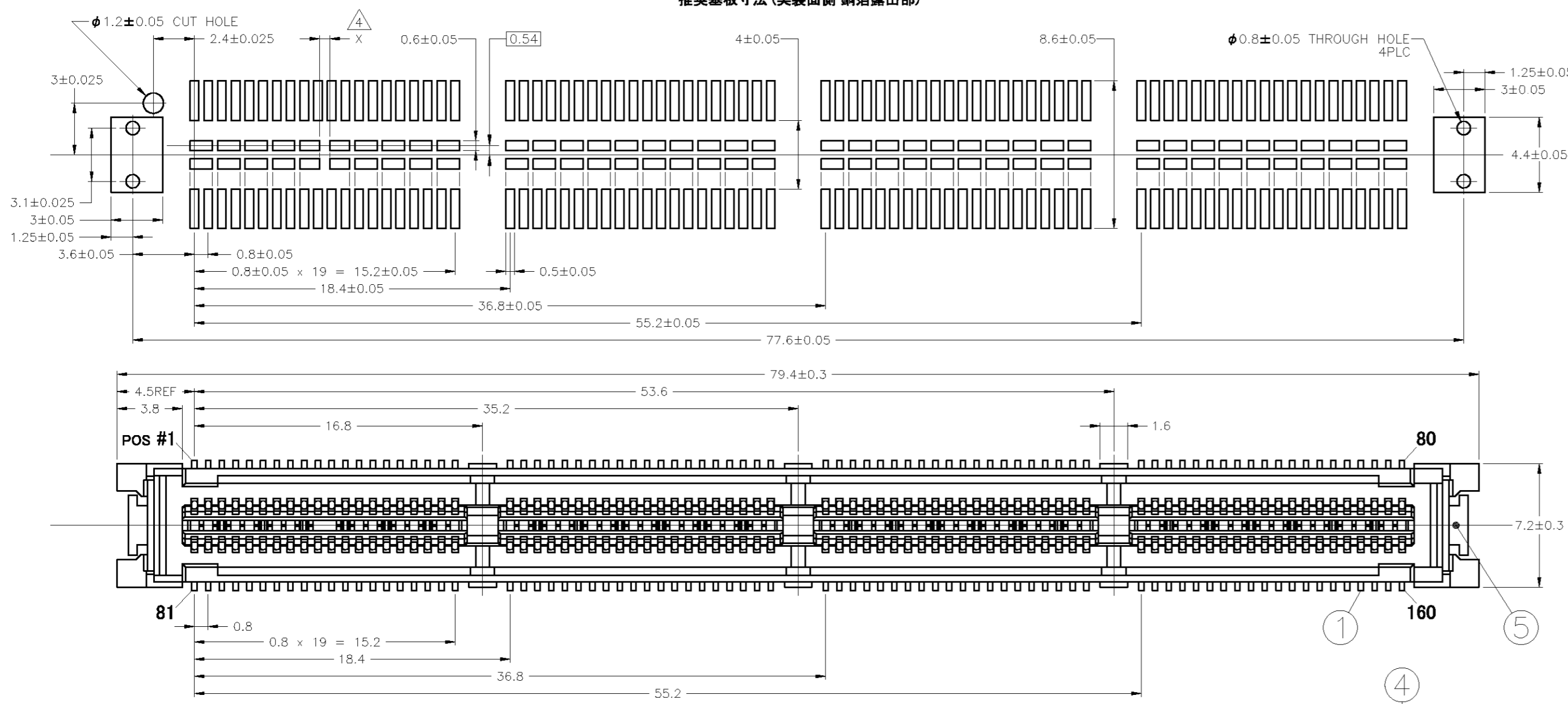


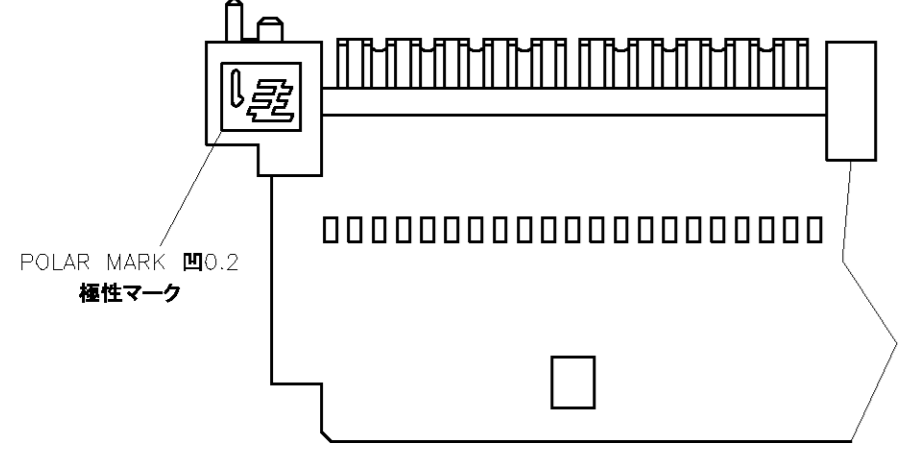
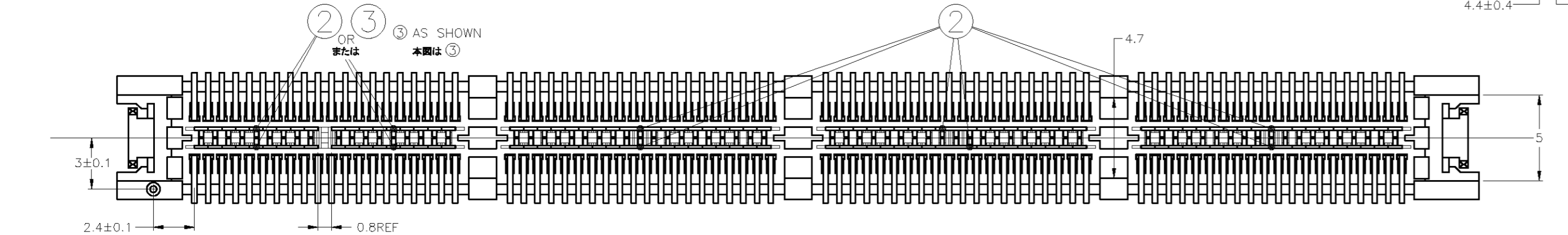
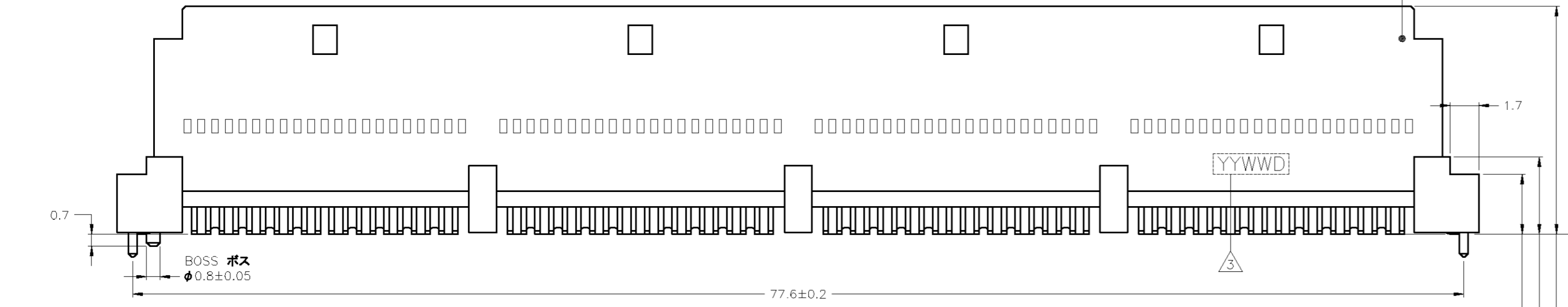
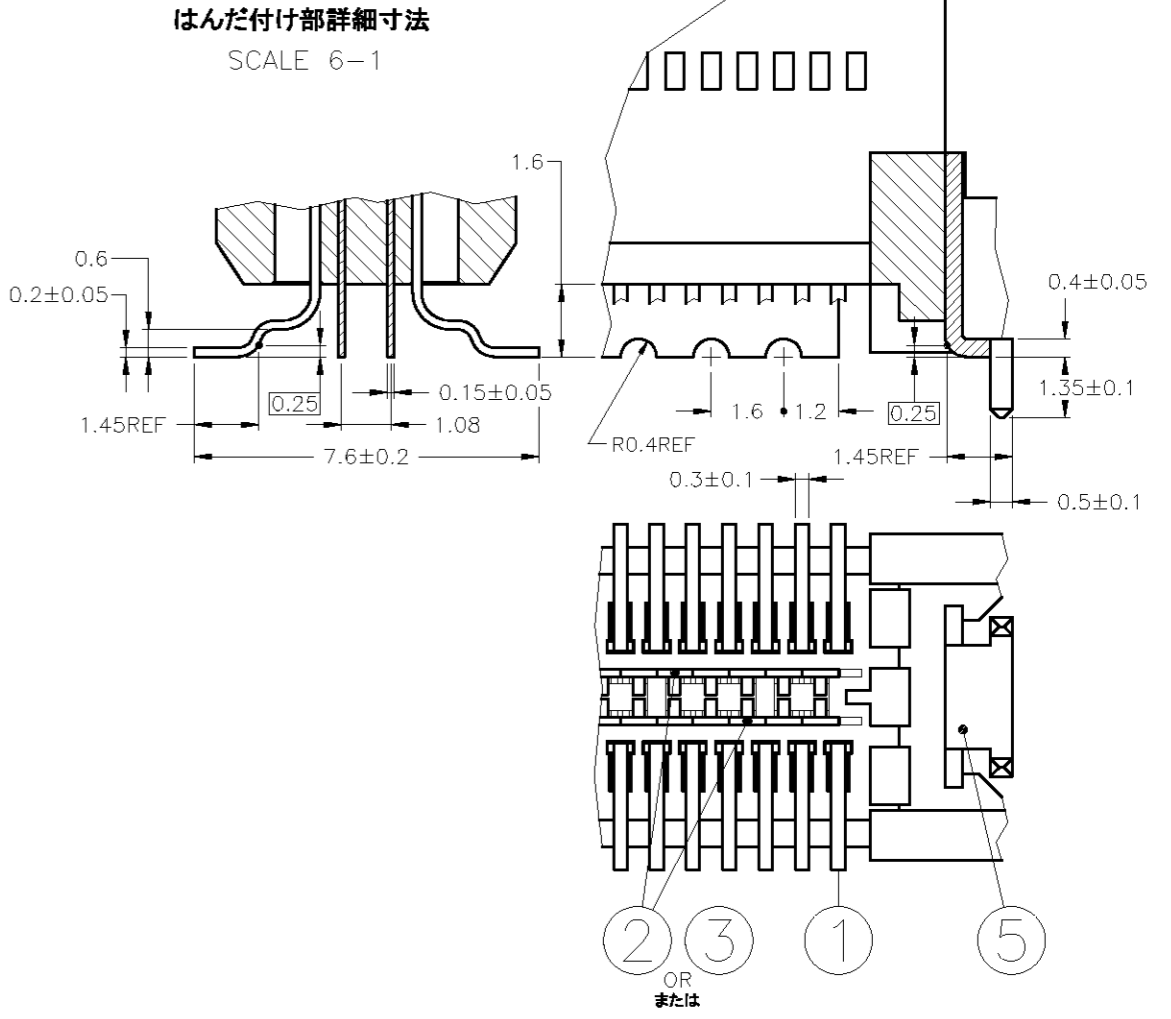
THIS DRAWING IS UNPUBLISHED. RELEASED FOR PUBLICATION
 © COPYRIGHT BY TYCO ELECTRONICS CORPORATION. ALL RIGHTS RESERVED.

| LOC | DIST | REVISIONS | | | | |
|-----|------|-----------|----------|---------|------|------|
| | | P | LTR | DATE | DWN | APVD |
| J | - | A | RELEASED | 21APR09 | K.F. | H.S. |

RECOMMENDED PC BOARD DIMENSION (CONNECTOR SIDE, Cu EXPOSED AREA)
 推奨基板寸法 (実装側 銅箔露出部)

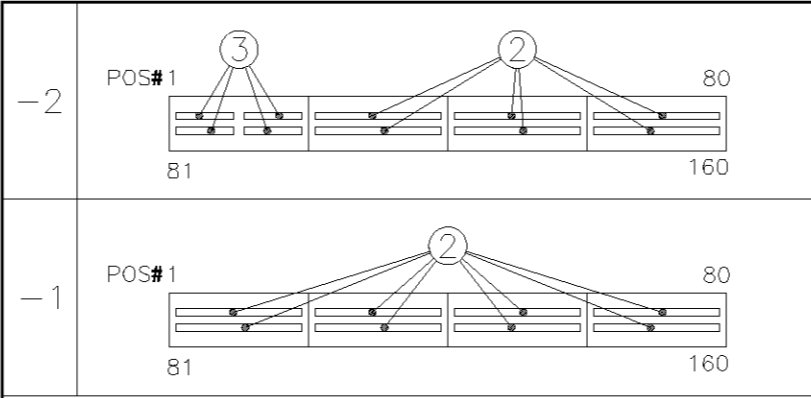


DETAIL DIMENSION OF SOLDERING PART
 はんだ付け部詳細寸法



NOTE
 1 MATING CONNECTOR P/N. / STACK HEIGHT
 2069395-□ / 16mm
 △ COPLANARITY: 0.1 MAX INCLUDING SIGNAL, GROUND/POWER CONTACT AND SOLDER PEG.
 △ DATE CODE MARKING
 △ DIMENSION X IS DECIDED BY USER WHEN GROUND/POWER CONTACT IS 1/2 BLOCK TYPE.

注記
 1 嵌合相手コネクタ型番 / 嵌合時スタックハイト
 2069395-□ / 16mm
 △ コプラナリティー 0.1 MAX
 シグナル、グラウンド/パワーコンタクト、ペグ含む
 △ デートコード印字
 △ グラウンド/パワーコンタクト 1/2ブロックの場合、パッド間寸法 X は使用者が決定する。



THIS DRAWING IS A CONTROLLED DOCUMENT.

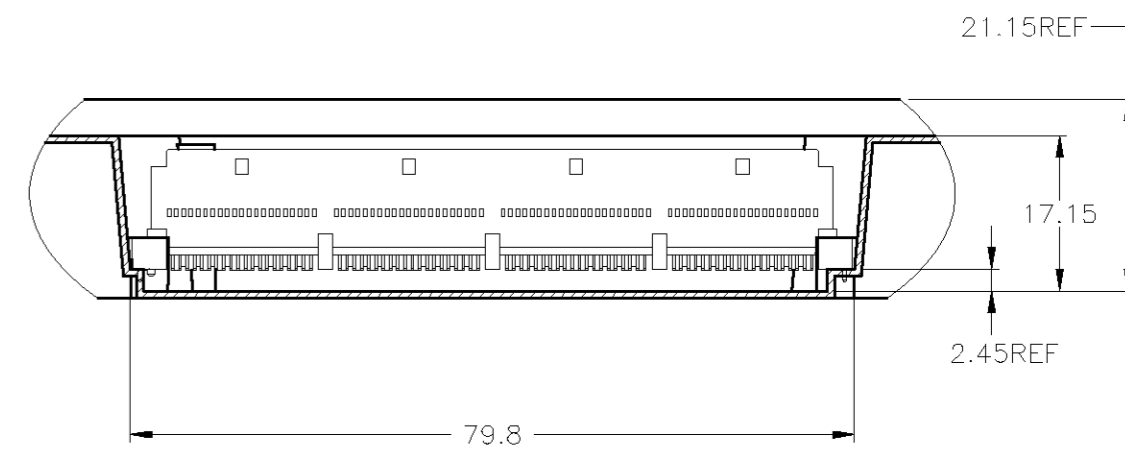
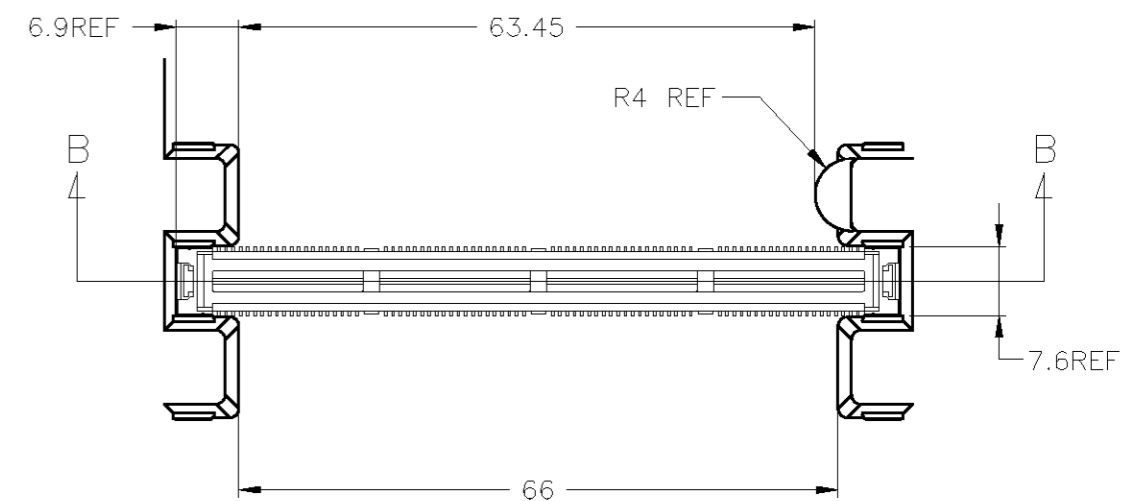
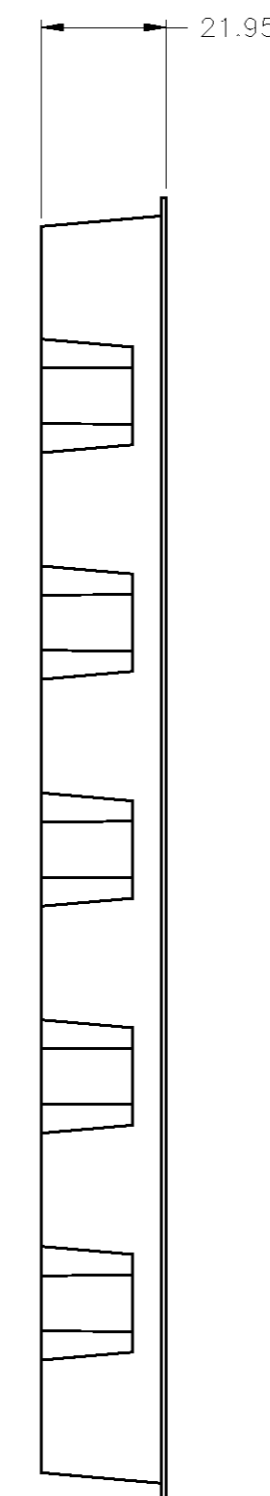
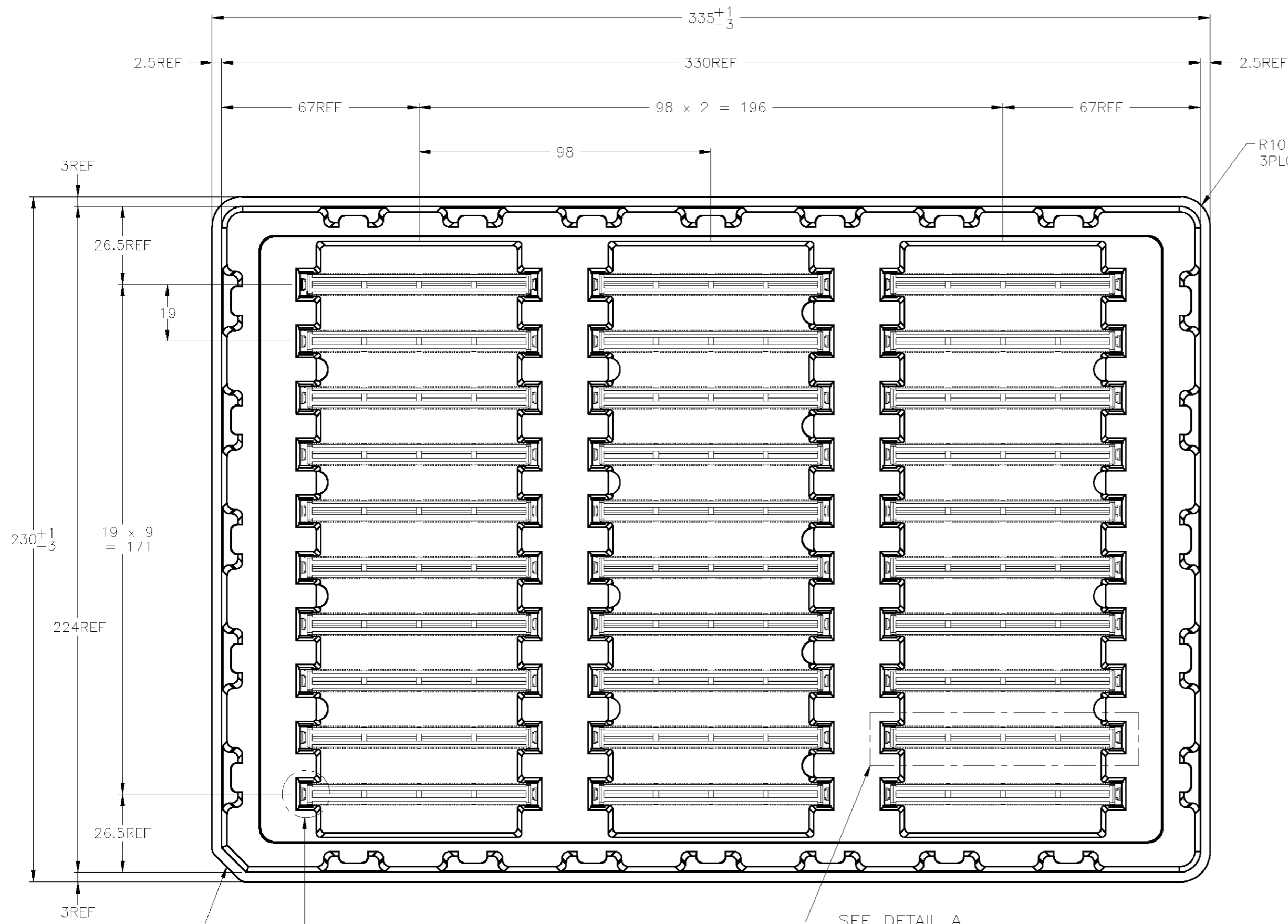
| | |
|----------------------------|---|
| DIMENSIONS: 単位: 寸 mm | TOLERANCES UNLESS OTHERWISE SPECIFIED: 一般公差 ± 0.15 |
| MATERIAL 材料 | FINISH 仕上 |
| SEE TABLE 表参照 | SEE TABLE 表参照 |

| | | | | | | | | | | | | | | |
|-----------|-------------------|-----------|-------------------|-----------|------------------|-----------|-----------|------|----|-------|-----------|-----------------|-----------------|----------|
| 21APR2009 | DWN K.FUKUMOTO | 21APR2009 | CHK I.HASEGAWA | 21APR2009 | APVD H.SHIRAI | 108-78604 | 108-78604 | 7.9g | A2 | 00779 | C=2069399 | SCALE 尺度 4:1 | SHEET 1 of 2 | REV A |
|-----------|-------------------|-----------|-------------------|-----------|------------------|-----------|-----------|------|----|-------|-----------|-----------------|-----------------|----------|

| | | | | | | |
|-----------|-----------|-------------------------------|-----|--|--|----------|
| 2069399-2 | 2069399-1 | 2 | 2 | COPPER ALLOY FINISH UNDER Ni 1.27 μ m MIN ALL OVER SOLDERING AREA Sn 2 μ m MIN 銅合金 仕上げ 下地 全面 Ni 1.27 μ m 以上 はんだ付け部 Sn 2 μ m 以上 | SOLDER PEG ソルダーペグ | 5 |
| 1 | 1 | 1 | 1 | POLYAMIDE OF GLASS FILLED THERMO PLASTIC, UL94V-0 ガラス入りポリアミド系熱可塑性樹脂, UL94V-0 | HOUSING ハウジング | 4 |
| 4 | 4 | 4 | 4 | COPPER ALLOY FINISH UNDER Ni 1.27 μ m MIN ALL OVER CONTACT AREA Au 0.3 μ m MIN SOLDERING AREA Au FLASH 銅合金 仕上げ 下地 全面 Ni 1.27 μ m 以上 接点部 Au 0.3 μ m 以上 はんだ付け部 Au フラッシュ | GROUND/POWER CONTACT 1/2 BLOCK グラウンド/パワー コンタクト 1/2 ブロック | 3 |
| 6 | 8 | 6 | 8 | 銅合金 仕上げ 下地 全面 Ni 1.27 μ m 以上 接点部 Au 0.3 μ m 以上 はんだ付け部 Au フラッシュ | GROUND/POWER CONTACT グラウンド/パワー コンタクト | 2 |
| 160 | 160 | 160 | 160 | COPPER ALLOY FINISH UNDER Ni 1.27 μ m MIN ALL OVER CONTACT AREA Au 0.5 μ m MIN SOLDERING AREA Au FLASH 銅合金 仕上げ 下地 全面 Ni 1.27 μ m 以上 接点部 Au 0.5 μ m 以上 はんだ付け部 Au フラッシュ | SIGNAL CONTACT シグナル コンタクト | 1 |
| QTY 数量 | | MATERIAL / FINISH 材質 / 仕上げ | | NAME 名称 | | ITEM NO. |

THIS DRAWING IS UNPUBLISHED. RELEASED FOR PUBLICATION
 © COPYRIGHT BY TYCO ELECTRONICS CORPORATION. ALL RIGHTS RESERVED.

| LOC | DIST | REVISIONS | | | | | |
|-----|------|-----------|-----|-------------|------|-----|------|
| J | - | P | LTR | DESCRIPTION | DATE | DWN | APVD |
| | | - | - | SEE SHEET 1 | - | - | - |



10x10 CHAM 10x10 CHAMFER EDGE SIDE OF THE TRAY IS BOSS SIDE OF THE CONNECTOR.
 トレーエッジのC面側がコネクタのボス側

SEE DETAIL A

NOTE
 △ TRAY MATERIAL ; POLYSTYRENE
 6 PRODUCT QUANTITY ; 30 / 1 TRAY

注記
 △ トレー材質: ポリスチレン
 6 製品入り数: 30 / 1トレー

| | | | | | | | | | | | | | | | | | | | | | | |
|---|---|--------------------------------|---|-------------------------------|-------|---|---|-------|---|---|-------|---|---|-------|---|---|--------|---|----|-----------------------------------|------------|-----------------|
| THIS DRAWING IS A CONTROLLED DOCUMENT. | | DWN K.FUKUMOTO 21APR2009 | Tyco Electronics Corporation Kawasaki, Japan | | | | | | | | | | | | | | | | | | | |
| DIMENSIONS: 単位: 寸 mm | | CHK I.HASEGAWA 21APR2009 | INDUSTRIAL EXPRESS 0.8MM PITCH HIGH SPEED CONN. VERTICAL PLUG ASSY 16MM HEIGHT 160P | | | | | | | | | | | | | | | | | | | |
| TOLERANCES UNLESS OTHERWISE SPECIFIED: 一般公差 ±0.5 | | APVD H.SHIRAI 21APR2009 | NAME 名称 | RESTRICTED TO | | | | | | | | | | | | | | | | | | |
| <table border="1"> <tr><td>0-PLC</td><td>±</td><td>-</td></tr> <tr><td>1-PLC</td><td>±</td><td>-</td></tr> <tr><td>2-PLC</td><td>±</td><td>-</td></tr> <tr><td>3-PLC</td><td>±</td><td>-</td></tr> <tr><td>4-PLC</td><td>±</td><td>-</td></tr> <tr><td>ANGLES</td><td>±</td><td>2°</td></tr> </table> | | 0-PLC | ± | - | 1-PLC | ± | - | 2-PLC | ± | - | 3-PLC | ± | - | 4-PLC | ± | - | ANGLES | ± | 2° | PRODUCT SPEC 製品規格 108-78604 | SIZE A2 | SCALE 尺 NONE |
| 0-PLC | ± | - | | | | | | | | | | | | | | | | | | | | |
| 1-PLC | ± | - | | | | | | | | | | | | | | | | | | | | |
| 2-PLC | ± | - | | | | | | | | | | | | | | | | | | | | |
| 3-PLC | ± | - | | | | | | | | | | | | | | | | | | | | |
| 4-PLC | ± | - | | | | | | | | | | | | | | | | | | | | |
| ANGLES | ± | 2° | | | | | | | | | | | | | | | | | | | | |
| MATERIAL 材料 SEE NOTE 注記参照 | | FINISH 仕上 - | WEIGHT - | DRAWING NO 番号 C-2069399 | | | | | | | | | | | | | | | | | | |
| | | CUSTOMER DRAWING | | SHEET 2 of 2 | | | | | | | | | | | | | | | | | | |