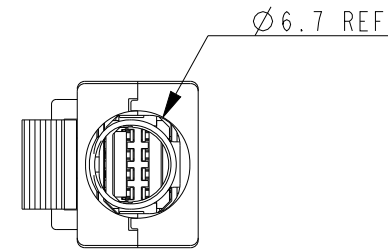
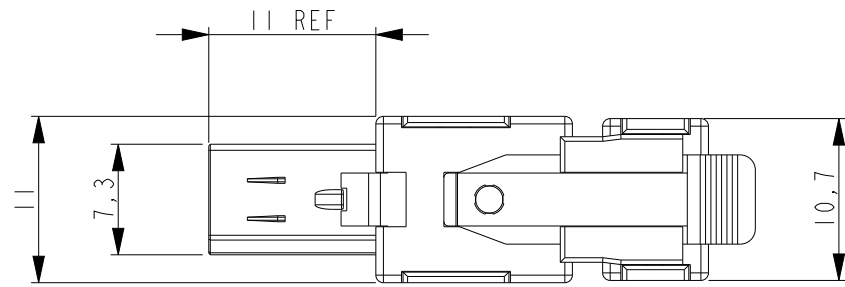
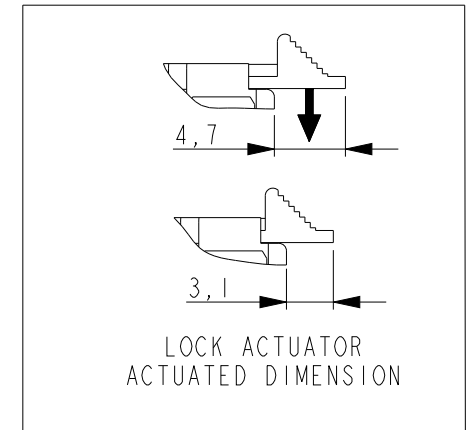


P/N 2069250-1 AS SHOWN:

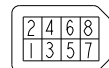
P	LTR	DESCRIPTION	DATE	DWN	APVD
D1		NOTE 5 ADDED (PROP 65 WARNING)	25AUG2020	SS	JDB
D2		REMOVED SHEET3; INFO MOVED TO SH.1	17NOV2020	SM	PP
E		ECR-23-166120 CANCEL PRINTING INK	17APR2023	BP	JDB
F1		ECR-23-170132 REMOVE INSTRUCTION SHEET IN TRAY	20JUL2023	BP	JDB



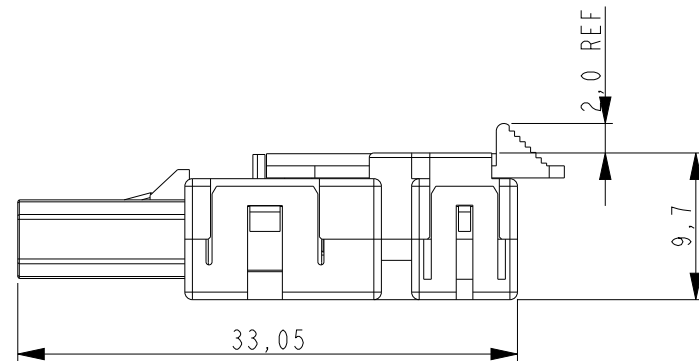
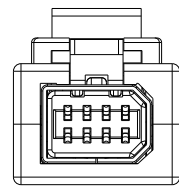
WARNING: This product can expose you to chemicals including **ANTIMONY TRIOXIDE** which is known to the state of California to cause cancer. For more information, visit www.P65Warnings.ca.gov.



D-SHAPE TYPE 1



CIRCUIT NO.



1. APPLICABLE CABLE RECOMMENDED AWG30~26 X 8C
MAX AWG22 X4C
OVERALL DIAMETER 6.7MAX.

F1

2. DATE CODE IS DESCRIBED ON THE BUNDLED CUSTOMER DRAWING.

3. THE PRODUCT OF THIS DRAWING NO. IS PACKED INDIVIDUALLY IN PACKAGE OF EXCLUSIVE USE. BEFORE THIS KIT IS PACKED TO TRAY, ITEM 6 SHOULD BE ASSEMBLED TO ITEM 7.

4. MATERIALS:

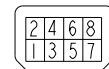
- HEAT SHRINKABLE TUBE: CROSS-LINKED POLYOLEFIN
 - COPPER FOIL TAPE: ELECTROLYSIS COPPER FOIL, ACRYLIC ADHESIVE MATERIAL
 - BOTTOM COVER: POLYESTER OF GLASS FILLED THERMO PLASTIC(UL94V-0)
 - TOP COVER,EJECTOR EXT VER.: POLYESTER OF GLASS FILLED THERMO PLASTIC(UL94V-0)
 - PLUG LOCK ACTUATOR: POLYESTER OF GLASS FILLED THERMO PLASTIC(UL94V-0)
 - LOCK EJECTOR EXT VER: POLYESTER OF GLASS FILLED THERMO PLASTIC(UL94V-0)
 - PLUG HSG COVER: POLYESTER OF GLASS FILLED THERMO PLASTIC(UL94V-0)
 - PLUG HSG SUB ASSY:
 - HSG:POLY-AMID OF GLASS FILLED THERMO PLASTIC(UL94V-0)
 - CONTACT PLATING: COPPER ALLOY
- UNDER ALL SURFACE: Ni PLATING 1.27µm. MIN.
TOP CONTACT AREA: Au PLATING 0.5µm. MIN.
SOLDERING AREA: Au FLASH

5 PROP 65 WARNING LABEL:

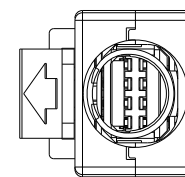
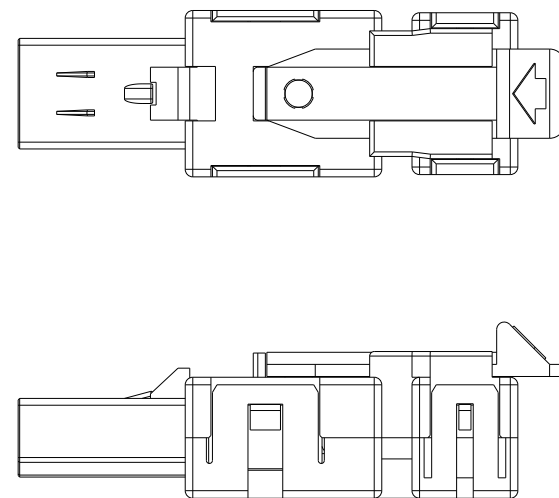
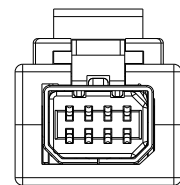
- THE WARNING LABEL ON THE PRODUCT OR LOWEST LEVEL PACKAGING.
- CHEMICAL NAME: ANTIMONY TRIOXIDE

P/N 1-2069250-2 AS SHOWN:

D-SHAPE TYPE 2



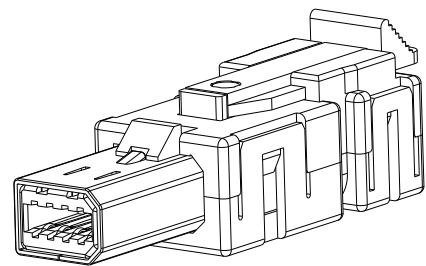
CIRCUIT NO.



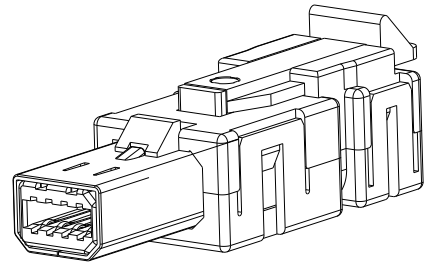
THIS DRAWING IS A CONTROLLED DOCUMENT.		DWN	03DEC2008		 TE Connectivity
		CHK	03DEC2008		
		APVD	03DEC2008		
		PRODUCT SPEC	108-78405		
DIMENSIONS: mm		TOLERANCES UNLESS OTHERWISE SPECIFIED: ±0.3		NAME INDUSTRIAL MINI I/O PLUG CONN. KIT TYPE 1 and 2, SOLDER LOCK EJECTOR EXTEND VERSION	
		0 PLC ± 1 PLC ± 2 PLC ± 3 PLC ±0,013 4 PLC ± ANGLES ±		APPLICATION SPEC 114-5431	
MATERIAL SEE TABLE 表参照		FINISH SEE TABLE 表参照		WEIGHT -	
		CUSTOMER DRAWING		SIZE A3	CAGE CODE 00779
				DRAWING NO C-2069250	
				RESTRICTED TO	
				SCALE 2:1	SHEET 1 OF 2
				REV F1	

P	LTR	DESCRIPTION	DATE	DWN	APVD
-	-	SEE SHEET 1	-	-	-

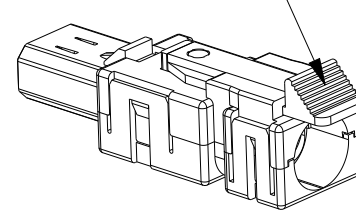
D-SHAPE TYPE 1



D-SHAPE TYPE 2

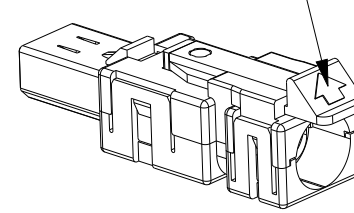


ACTUATOR TYPE A1 or A2

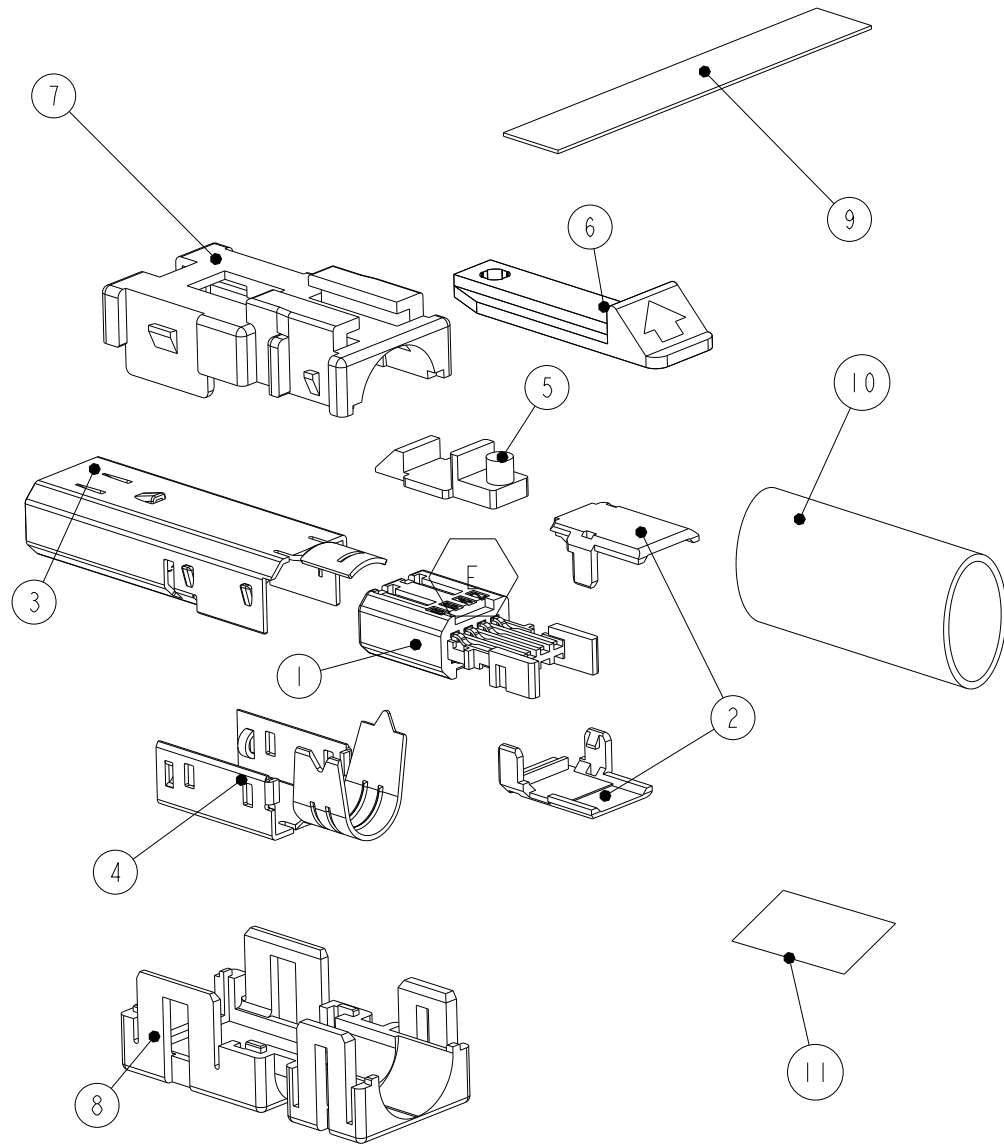


SCALE 3:2

ACTUATOR TYPE B



SCALE 3:2



FI

INACTIVE		INACTIVE		INACTIVE		PRINTING INK COLOR	ACTUATOR TYPE	MATERIAL COLOR	PART NAME	ITEM NO.
TYPE 2	TYPE 1	TYPE 2	TYPE 1	TYPE 2	TYPE 1					
									CUSTOMER DRAWING NO. 2069250 PRINTED ON A4 SIZE	11
									HEAT SHRINKABLE TUBE	10
									COPPER FOIL TAPE	9
								BLACK	BOTTOM COVER	8
								BLACK	TOP COVER, EJECTOR EXTENSION VERSION	7
		-	-	-	-	NO PRINTING	A2	ORANGE	PLUG LOCK ACTUATOR	6
		-	-	-	-	BLACK	B	ORANGE		
		-	-	-	-	BLACK	A2	ORANGE		
		-	-	-	-	NO PRINTING	B	WHITE		
		-	-	-	-	WHITE	B	WHITE		
		-	-	-	-	WHITE	A2	WHITE		
		-	-	-	-	NO PRINTING	A1	BLACK	LOCK EJECTOR EXTENSION VERSION	5
								BLACK	BOTTOM SHELL	4
									TOP SHELL	3
2	2	2	2	2	2				PLUG HOUSING COVER	2
									PLUG HOUSING SUB ASSY	1
1-2069250-3	2069250-3	1-2069250-2	2069250-2	1-2069250-1	2069250-1				PART NAME	

THIS DRAWING IS A CONTROLLED DOCUMENT.

DWN S. INOMATA 03DEC2008

CHK A. OOISHI 03DEC2008

APVD A. OOISHI 03DEC2008

PRODUCT SPEC 108-78405

APPLICATION SPEC 114-5431

WEIGHT -

CUSTOMER DRAWING

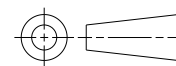


NAME INDUSTRIAL MINI I/O
PLUG CONN. KIT TYPE 1 and 2,
SOLDER LOCK EJECTOR EXTEND VERSION

SIZE A3 CAGE CODE 00779 DRAWING NO. C-2069250 RESTRICTED TO

SCALE 2:1 SHEET 2 OF 2 REV FI

DIMENSIONS: mm



TOLERANCES UNLESS OTHERWISE SPECIFIED:
0-PLC ±
1-PLC ±
2-PLC ±
3-PLC ±0,013
4-PLC ±
ANGLES ±
FINISH

MATERIAL