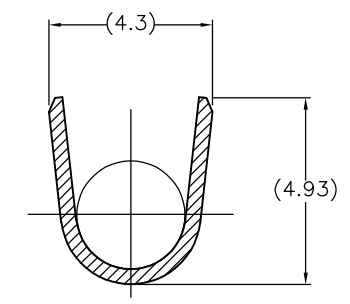
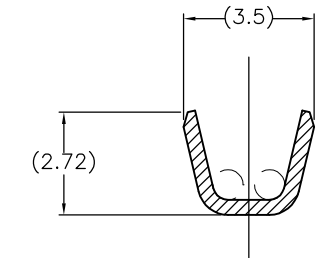
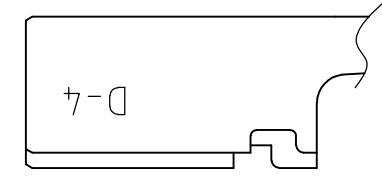
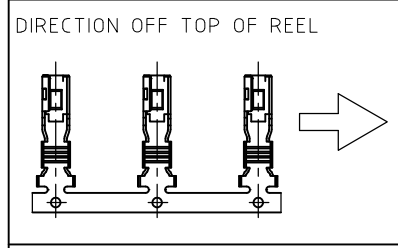


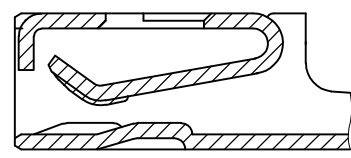
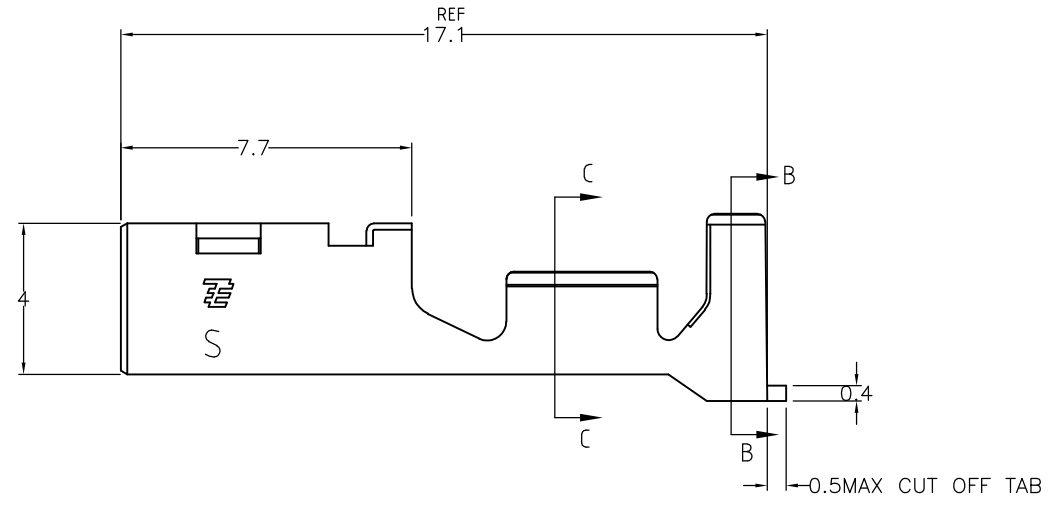
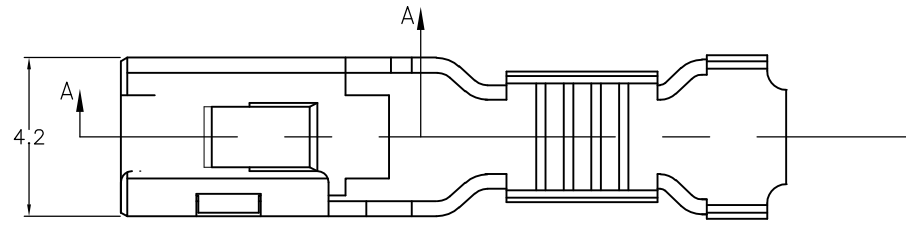
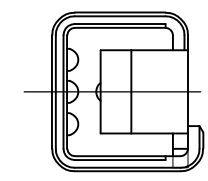
THIS DRAWING IS UNPUBLISHED. RELEASED FOR PUBLICATION
 © COPYRIGHT BY TYCO ELECTRONICS CORPORATION. ALL RIGHTS RESERVED.

LOC	DIST	REVISIONS			
P	LTR	DESCRIPTION	DATE	DWN	APVD
J	-	B	REVISED PER ECR-10-010449	12JUL10	HMR TM



断面C-C
SECT C-C

断面B-B
SECT B-B



断面A-A
SECT A-A

- 注)
- 一般公差：±0.25
 - 材料：銅合金全面Niめっき1.3μm以上
接点部金めっき0.38μm以上めっき
 - 適用電線：AWG#20-#16 (被覆外径Φ1.8~Φ3.23)

- NOTES)
- GENERAL TOLERANCE:±0.25
 - MATERIAL:COPPER ALLOY,FINISH:OVER NI PLATING 1.3 m MIN.
(CONTACT AREA) 0.38 m MIN GOLD PLATING
 - APPLICABLE WIRE:AWG#20-#16 (INS DIAΦ1.8~Φ3.23)

S SIZE
2040587-1
Part Number

THIS DRAWING IS A CONTROLLED DOCUMENT.		DWN H.URUSHIBATA 18JUN2008	Tyco Electronics Corporation Kawasaki, Japan		
DIMENSIONS: mm		CHK S.MANABE 18JUN2008	NAME		
TOLERANCES UNLESS OTHERWISE SPECIFIED:		APVD S.MANABE 18JUN2008	DYNAMIC D4200 REC CONTACT (S SIZE) L/P		
0 PLC ± -		PRODUCT SPEC	-		
1 PLC ± -		108-78182	-		
2 PLC ± -		APPLICATION SPEC	-		
3 PLC ± -		114-5369	SIZE	CAGE CODE	DRAWING NO
4 PLC ± -		WEIGHT	A3	00779	C=2040587
ANGLES ± -		CUSTOMER DRAWING	SCALE	SHEET	REV
FINISH			5:1	1 OF 1	B
-					