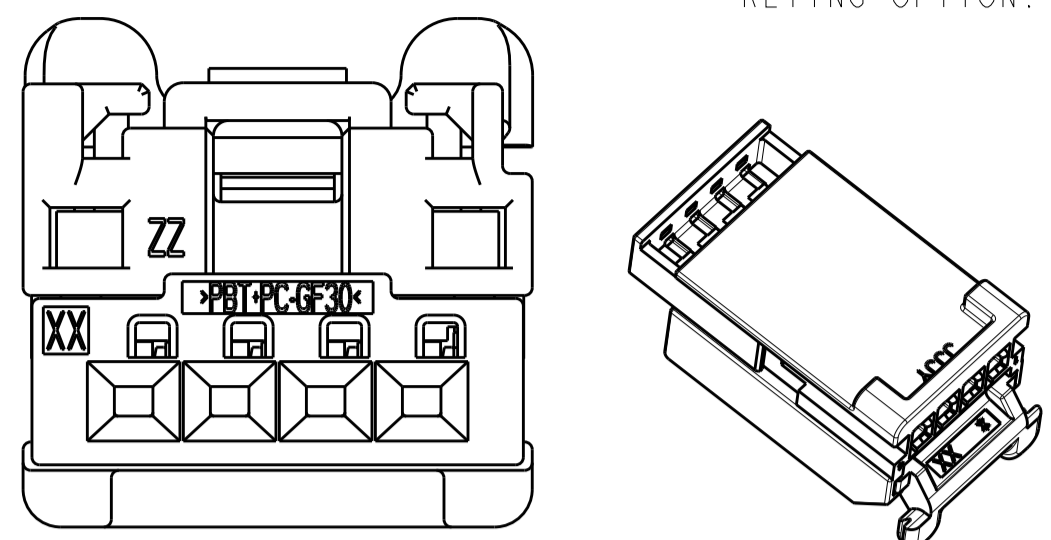


REVISIONS				
P.	LTN	DESCRIPTION	DATE	OWN APVD
A1		REVISED PER ECO-12-013011	16 JUL 2012	DLD DCM
A2		REVISED PER ECO-15-011565	21 AUG 2015	DLD DCM
A3		REVISED PER ECO-17-009179	23 JUN 2017	DLD DCM
A4		REVISED PER ECO-19-000631	29 JAN 2019	JMS CM

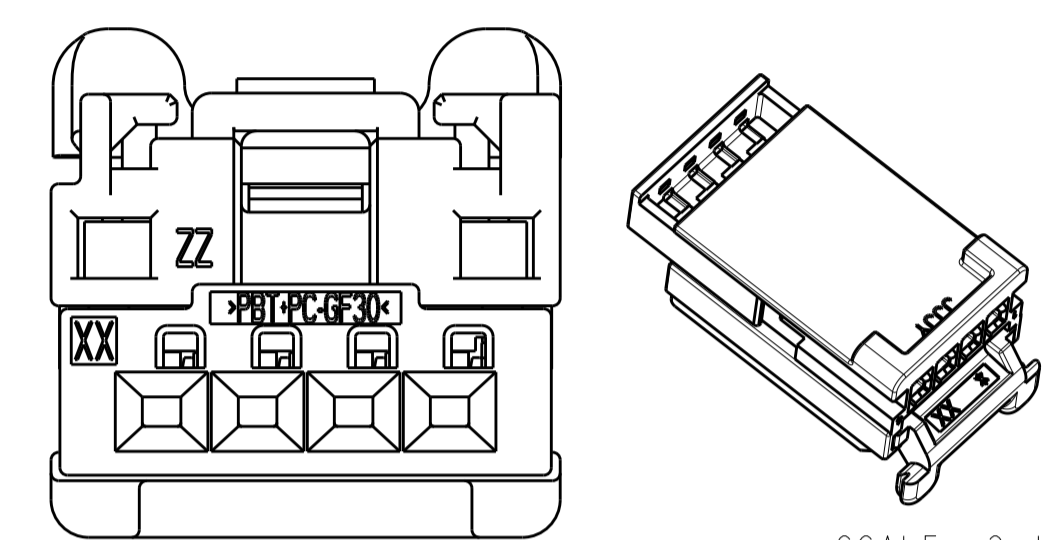
KEYING OPTIONS (SHOWN WITH CPA)

KEYING OPTION: A



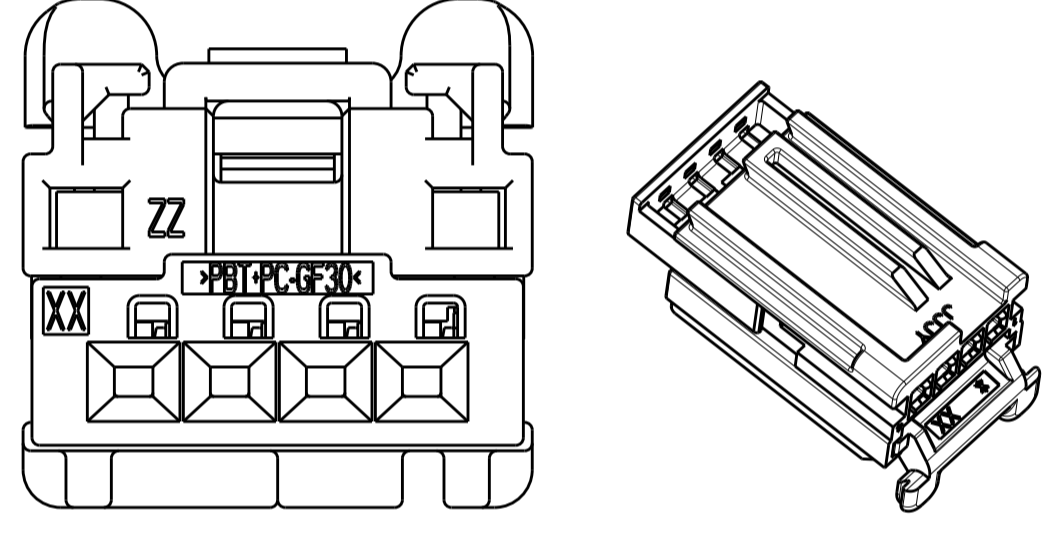
SCALE 2:1

KEYING OPTION: B



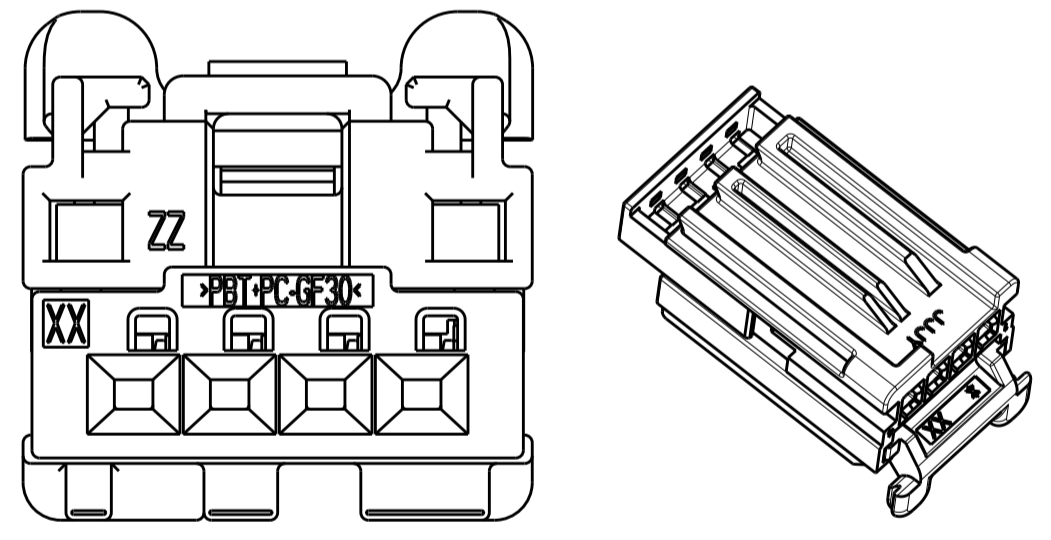
SCALE 2:1

KEYING OPTION: C

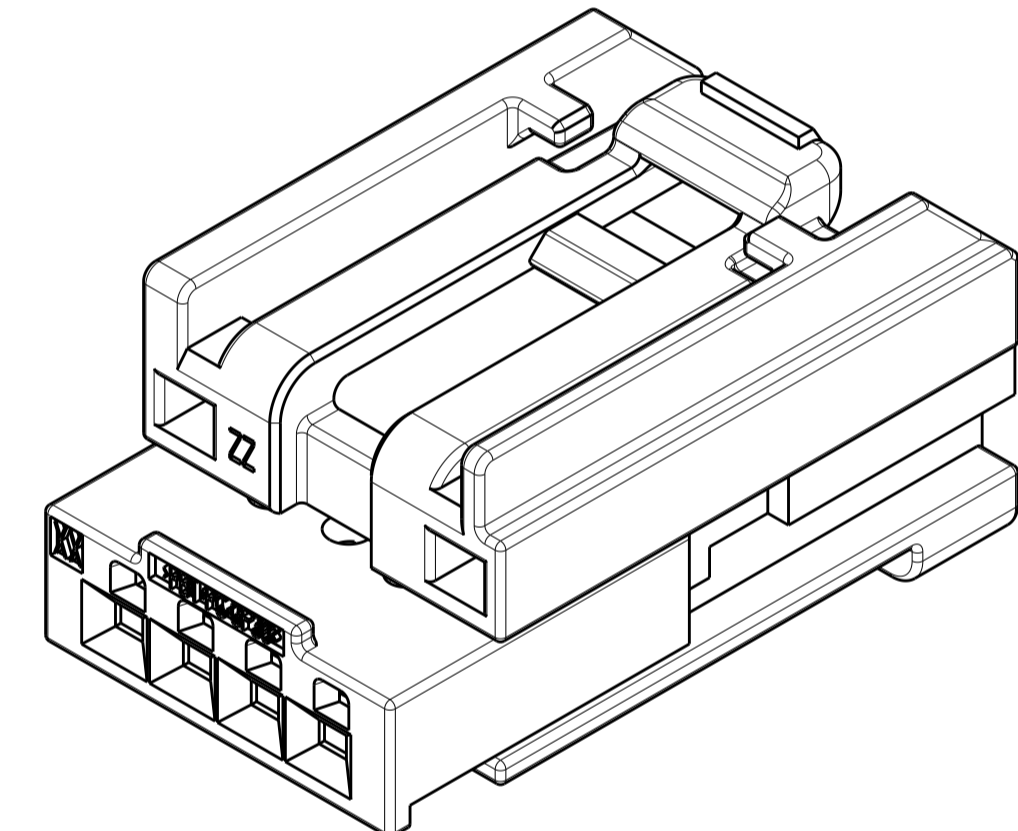
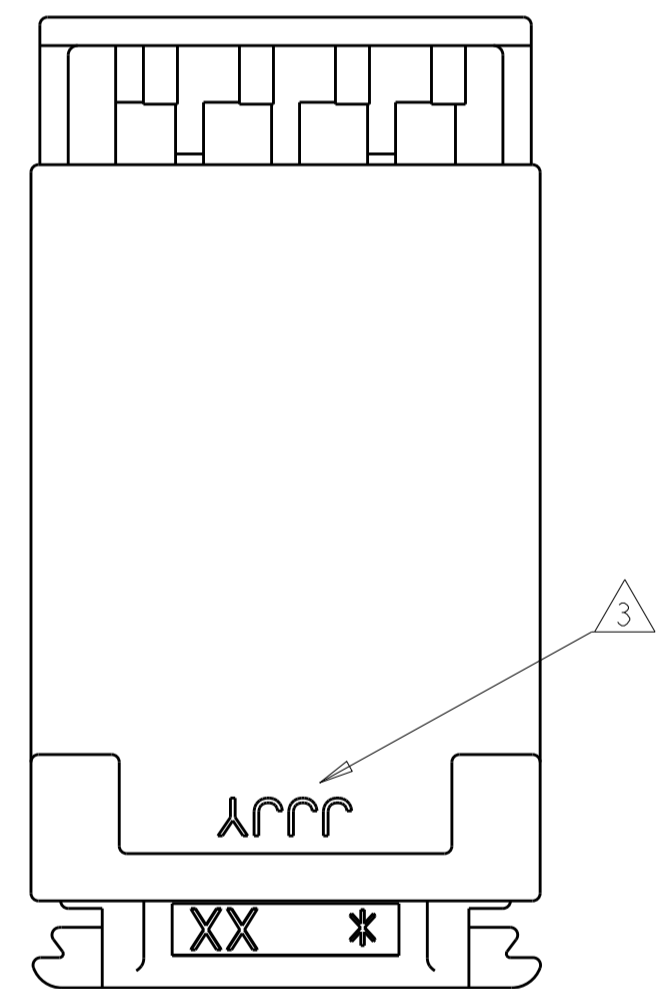
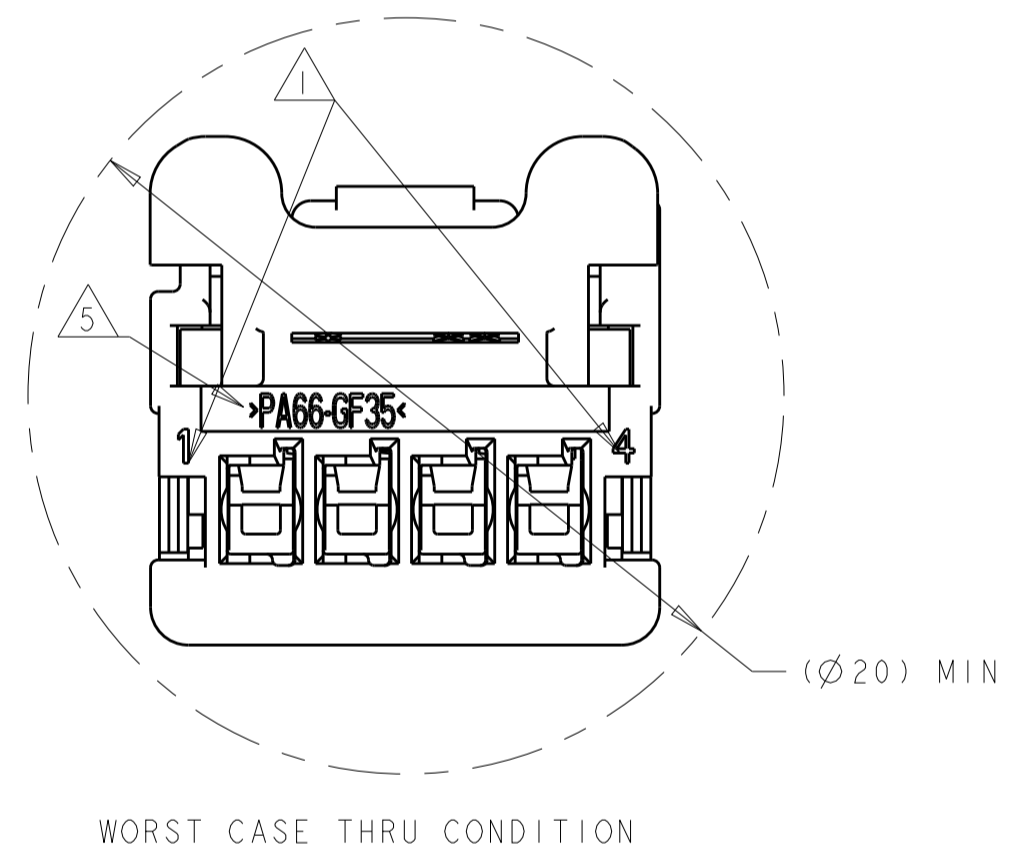
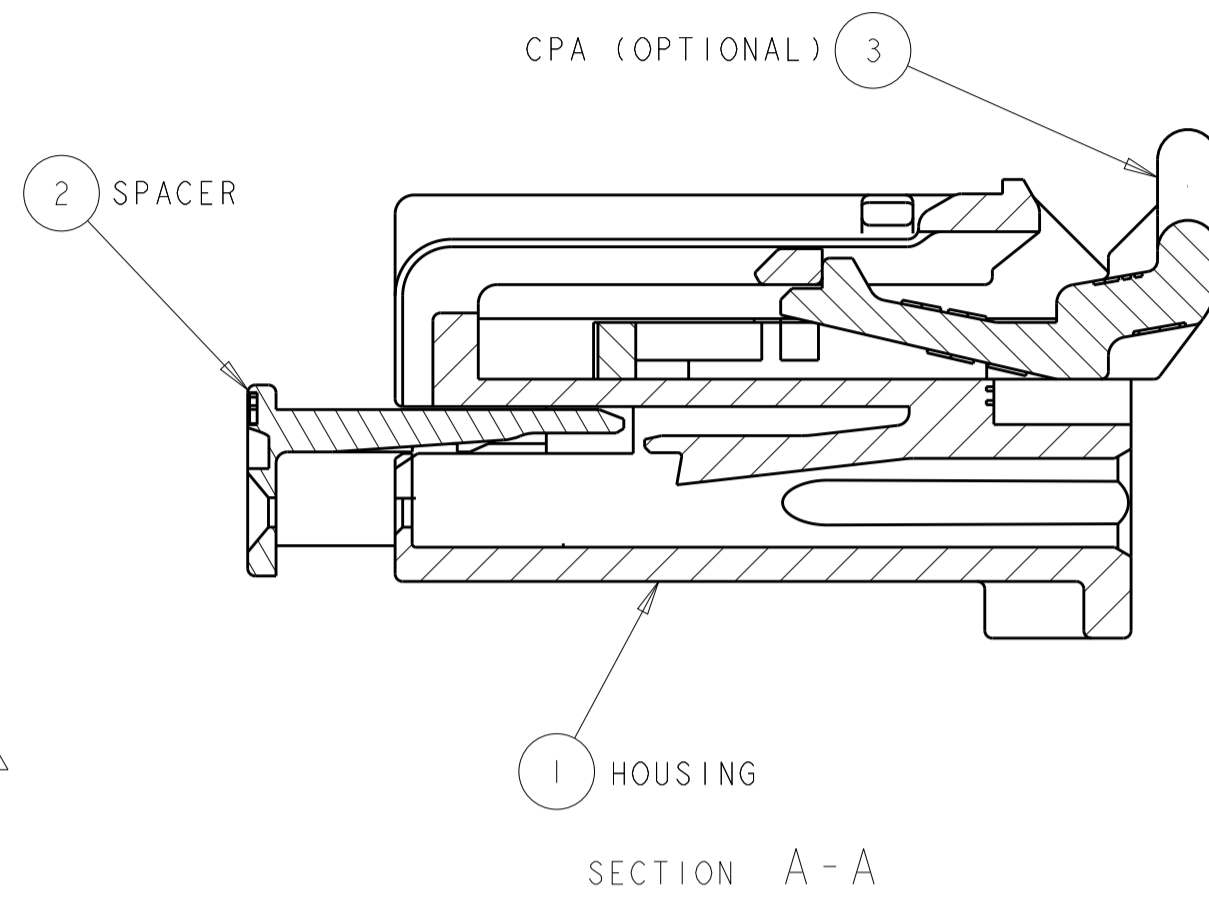
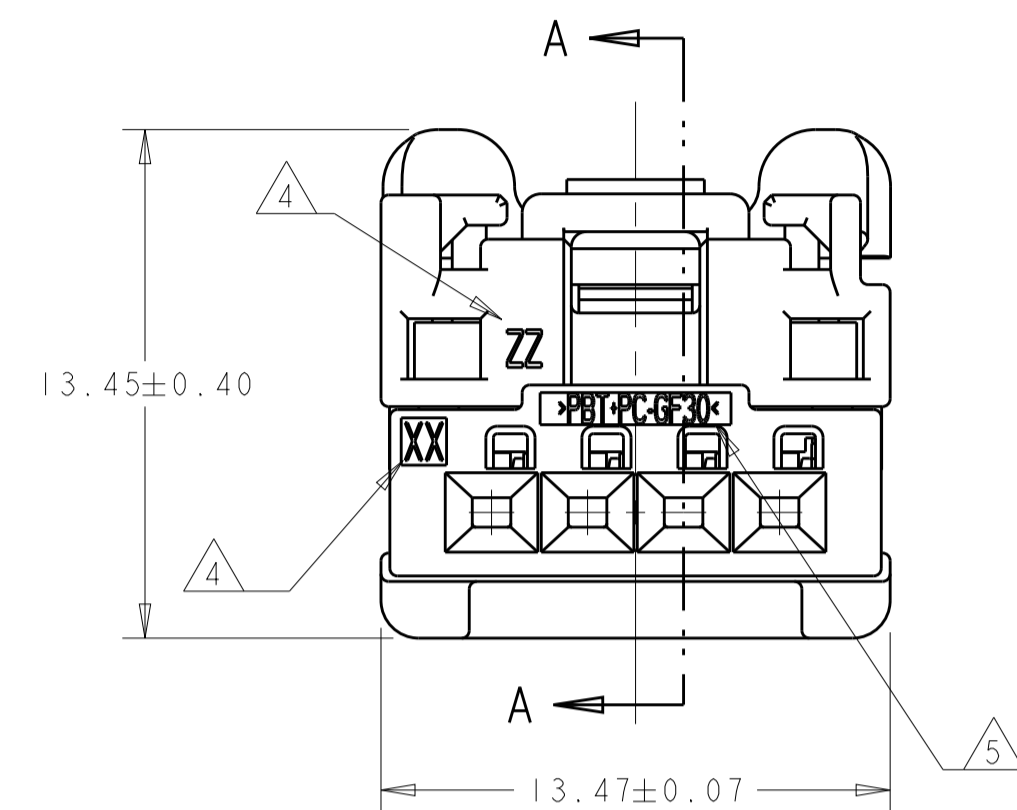
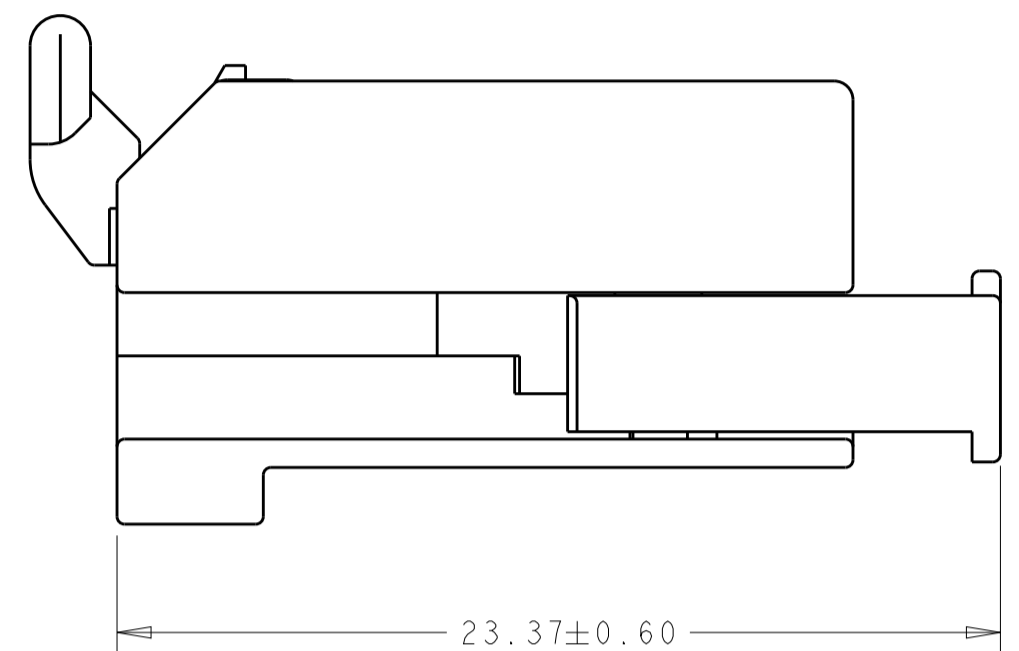


SCALE 2:1

KEYING OPTION: D



SCALE 2:1



- 1. CIRCUIT IDENTIFICATION NUMBERS LOCATED AS SHOWN.
- 2. SPACER AND CPA (OPTIONAL) ARE SHIPPED IN PRE-ASSEMBLED POSITION.
- 3. DATE CODE; FORMAT: JJJ = JULIAN DAY; Y = YEAR (4TH DIGIT).
- 4. MOLD CAVITY IDENTIFICATION.
- 5. MATERIAL IDENTIFICATION.
- 6. PACKING: CONNECTOR ASSEMBLIES BULK PACKAGED IN CARDBOARD BOX.
- 7. REFERENCE TE INSTRUCTION SHEET 408-32052.

PARTS LIST									
<----- ASSEMBLY PN									
QTY REQ'D PER ASSY	DESCRIPTION	MATERIAL	COLOR	ITEM NO					
1	CPA	>PBT-GF20<	RED	3					
1	SPACER	>PBT+PC-GF35<	RED	2					
1	HOUSING; KEY B	>PA66-GF35<	NATURAL	1					
-	HOUSING; KEY D	>PA66-GF35<	BLACK	1					
-	HOUSING; KEY C	>PA66-GF35<	BLACK	1					
-	HOUSING; KEY B	>PA66-GF35<	BLACK	1					
-	HOUSING; KEY A	>PA66-GF35<	BLACK	1					
					REVISION OF EACH ASSY NO (WHEN BLANK, USE DWG REVISION)				
					WEIGHT OF EACH ASSY NO (g)				

THIS DRAWING IS A CONTROLLED DOCUMENT.

DIMENSIONS: mm
 TOLERANCES UNLESS OTHERWISE SPECIFIED:
 0 PLC ±
 1 PLC ±
 2 PLC ±
 3 PLC ±
 4 PLC ±
 ANGLES ±
 MATERIAL SEE TABLE FINISH ±

DWN: D. DRUMMOND 20APR2012
 CHK: C. MARTIN 20APR2012
 APVD: C. MARTIN 20APR2012
 NAME: FEMALE CONNECTOR ASSEMBLY, 4 POSITION (1X4), UNSEALED, GENERATION Y
 SIZE: A1
 CAGE CODE: 2035360
 DRAWING NO: 2035360-1
 SCALE: 5:1
 SHEET: 1 OF 1
 REV: A4

CUSTOMER DRAWING
 SCALE: 5:1
 SHEET: 1 OF 1
 REV: A4