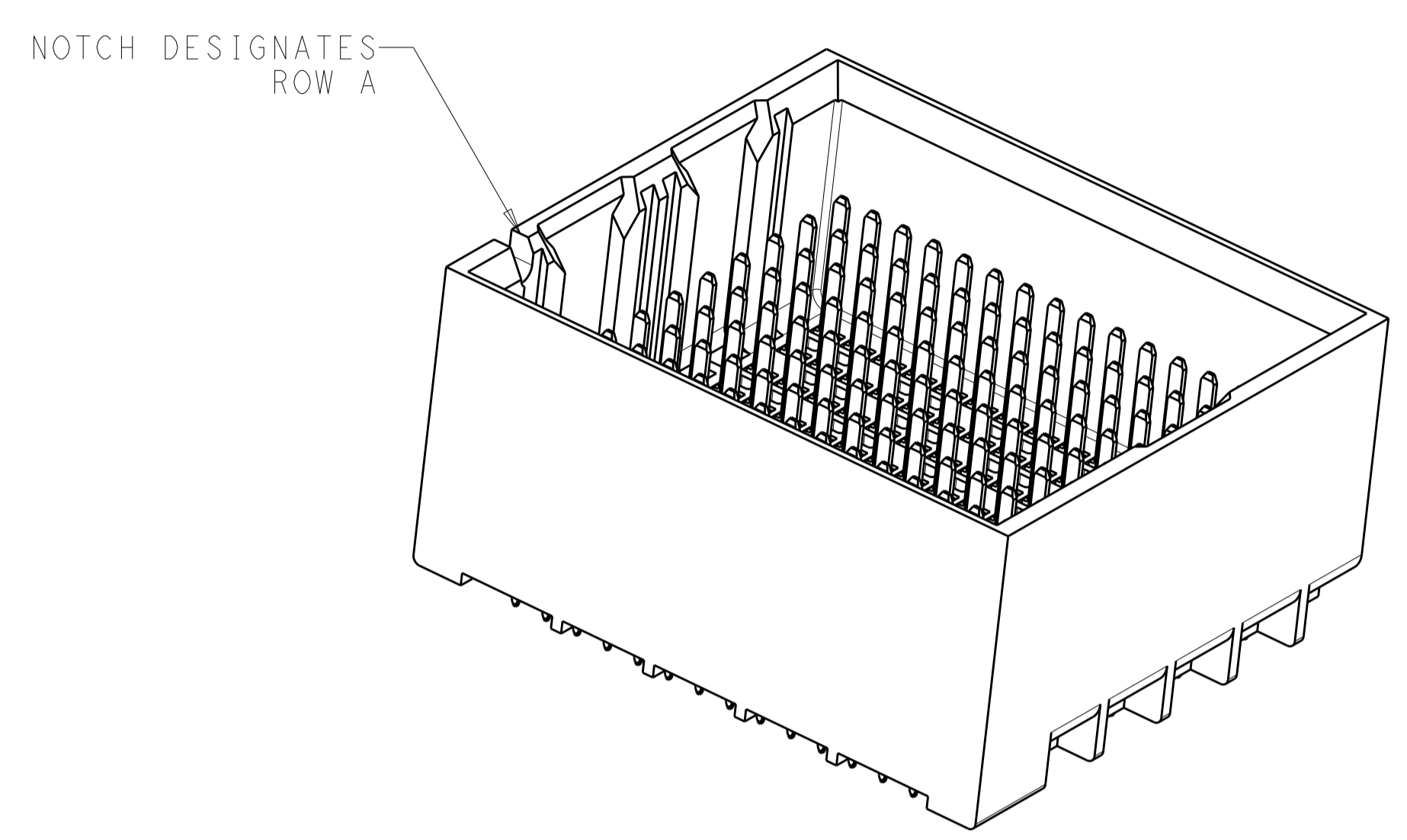
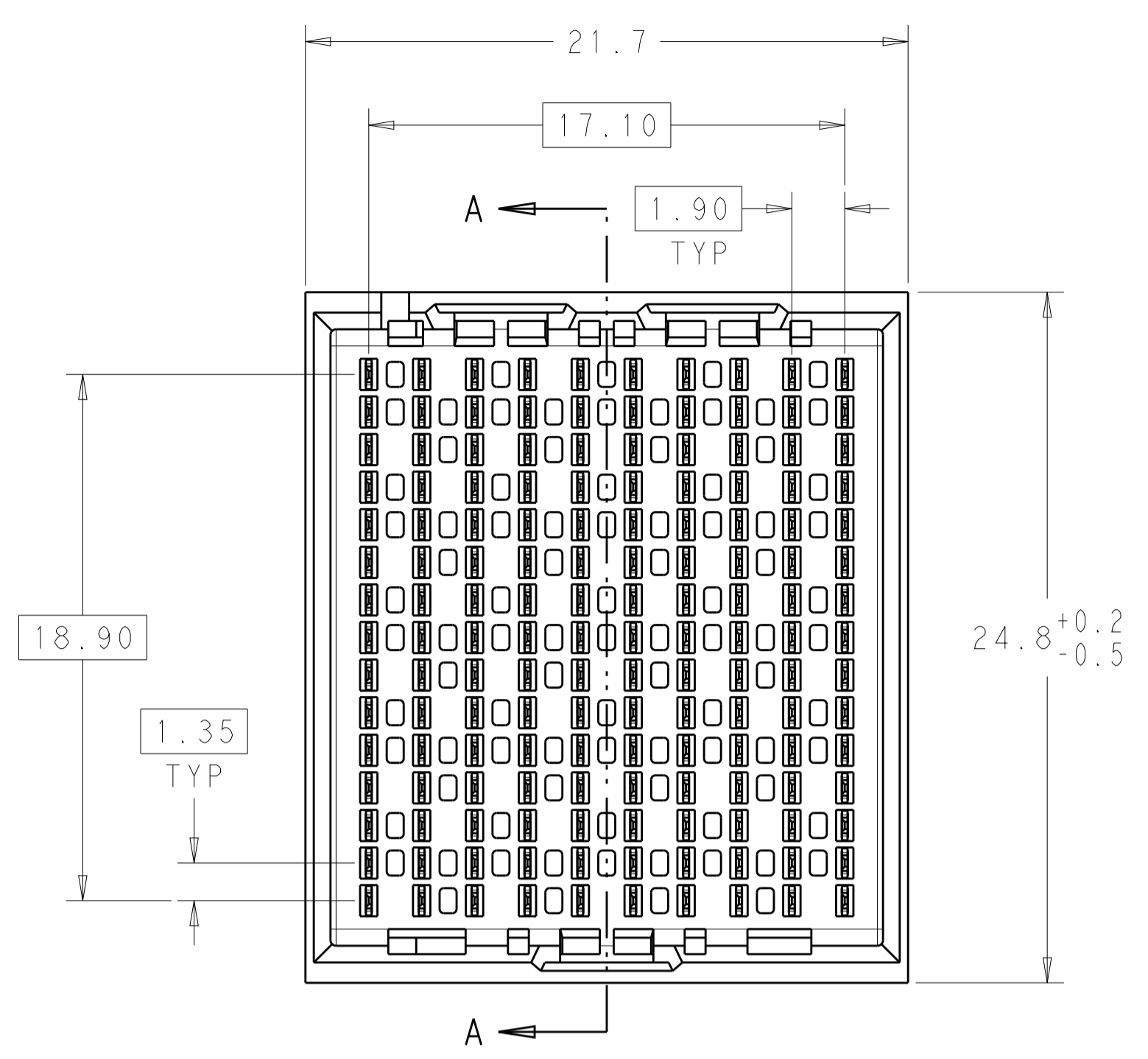
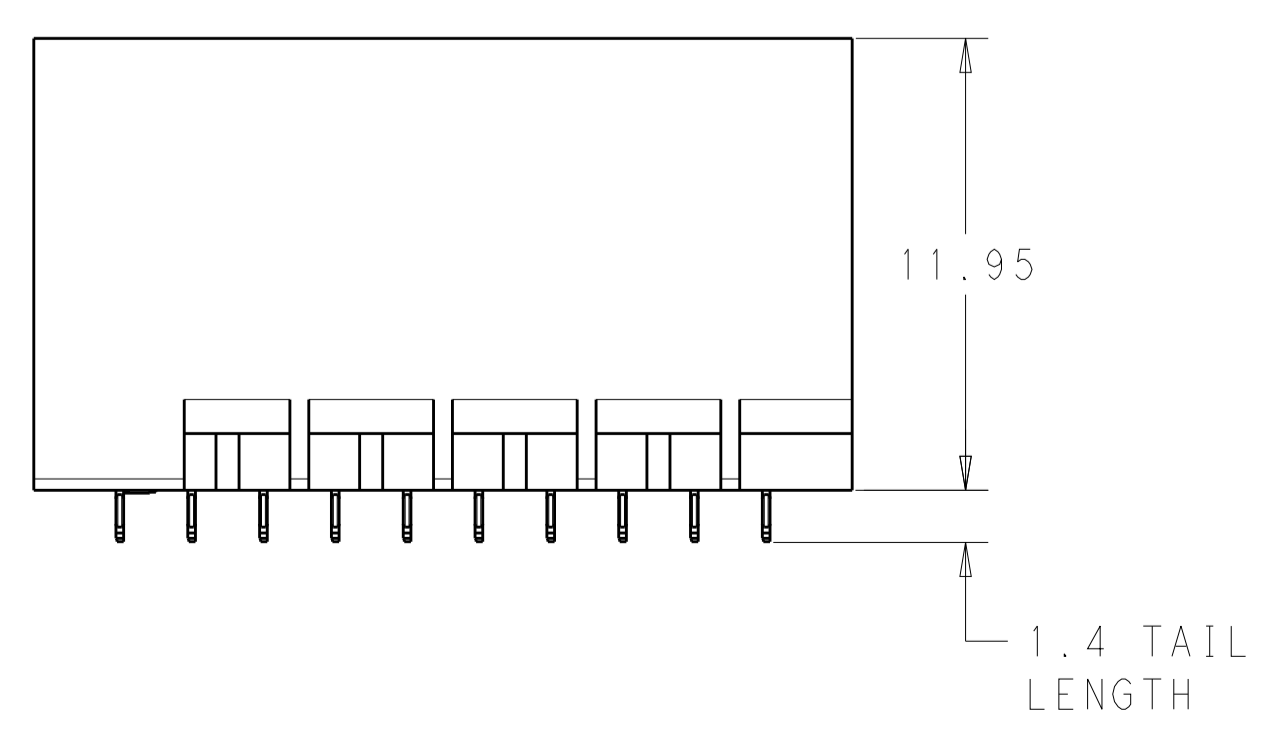
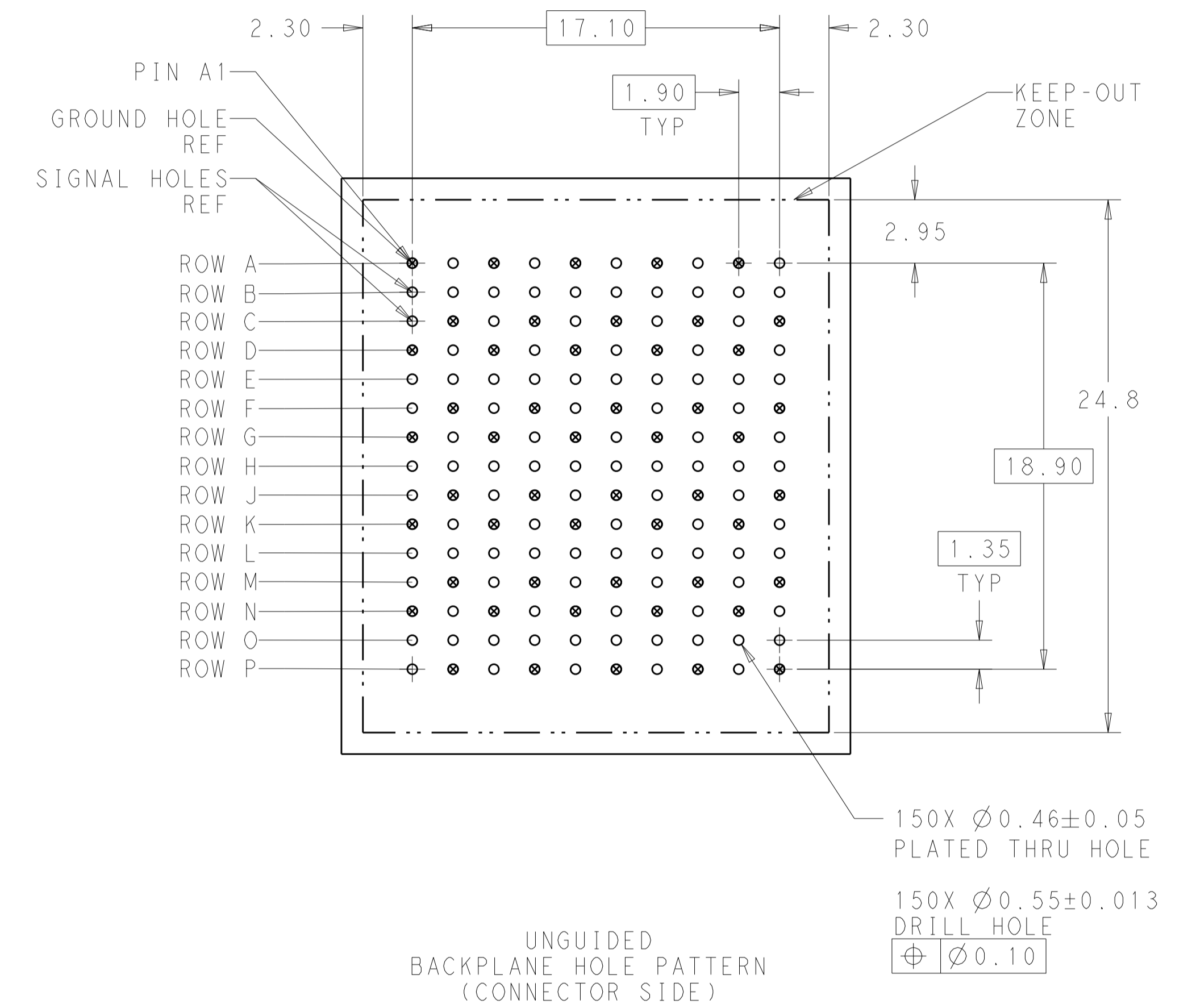


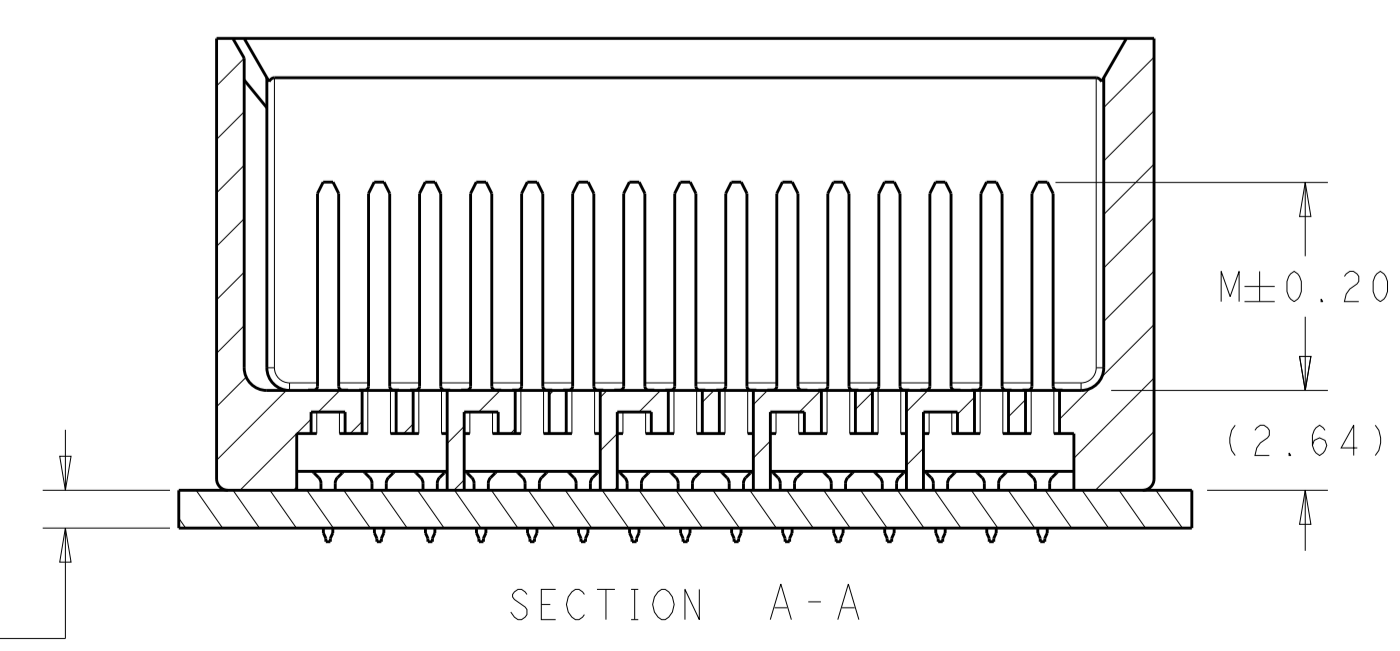
LOC	DIST	REVISIONS			
P	LTN	DESCRIPTION	DATE	DWN	APVD
A		CREATED BY AUTOMATION PROGRAM	09MAY2011	RKC	JE



- 1 MATERIAL:  
HOUSING: LCP, GLASS FILLED, UL94V-0.  
TERMINALS: HIGH PERFORMANCE COPPER ALLOY.
- 2 FINISH:  
30μ" MIN GOLD IN CONTACT AREA. SELECTIVE TIN ON PCB TAILS, NICKEL OVERALL.
- 3 FINISH:  
30μ" MIN GOLD IN CONTACT AREA. SELECTIVE TIN-LEAD ON PCB TAILS, NICKEL OVERALL.



1.00 MINIMUM BOARD THICKNESS



THIS DRAWING IS A CONTROLLED DOCUMENT.		DWN R. COELLO 09MAY2011	<b>STE</b> TE Connectivity
DIMENSIONS: mm		CHK J. EARY 09MAY2011	
TOLERANCES UNLESS OTHERWISE SPECIFIED:		APVD J. EARY 09MAY2011	NAME IMPACT, 5 PAIR, 10 COLUMN, HEADER UNGUIDED, DUAL END WALL SIGNAL MODULE, 0.46 PTH
0 PLC ±0.25		PRODUCT SPEC	
1 PLC ±0.13		APPLICATION SPEC	SIZE CAGE CODE DRAWING NO. RESTRICTED TO
2 PLC ±0.13		WEIGHT	A100779C=2007850
3 PLC ±0.13		CUSTOMER DRAWING	SCALE 5:1 SHEET 1 OF 2 REV A
4 PLC ±0.13			
ANGLES			
FINISH SEE TABLE			

THIS DRAWING IS UNPUBLISHED. RELEASED FOR PUBLICATION 20  
 © COPYRIGHT 20 BY - ALL RIGHTS RESERVED.

LOC	DIST	REVISIONS					
		P	LTN	DESCRIPTION	DATE	DMN	APVD
AD	00	-		SEE SHEET 1	-	-	-

FINISH	DIM M	PART NUMBER
△3	5.5	2007850-6
△3	4.9	2007850-5
△3	4.5	2007850-4
△2	5.5	2007850-3
△2	4.9	2007850-2
△2	4.5	2007850-1

REFER TO WWW.TE.COM  
 FOR PRODUCT AVAILABILITY

THIS DRAWING IS A CONTROLLED DOCUMENT.		DMN R. COELLO 09MAY2011	
		CHK J. EARY 09MAY2011	
DIMENSIONS:		APVD J. EARY 09MAY2011	NAME IMPACT, 5 PAIR, 10 COLUMN, HEADER UNGUIDED, DUAL END WALL SIGNAL MODULE, 0.46 PTH
TOLERANCES UNLESS OTHERWISE SPECIFIED:		PRODUCT SPEC	
mm	0 PLC ±0.25	APPLICATION SPEC	SIZE CAGE CODE DRAWING NO
	1 PLC ±0.13	RESTRICTED TO	A100779C=2007850
	2 PLC ±	WEIGHT	CUSTOMER DRAWING
	3 PLC ±	SCALE	5:1 SHEET 2 OF 2 REV A
	4 PLC ±		
	ANGLES		
	FINISH SEE TABLE		