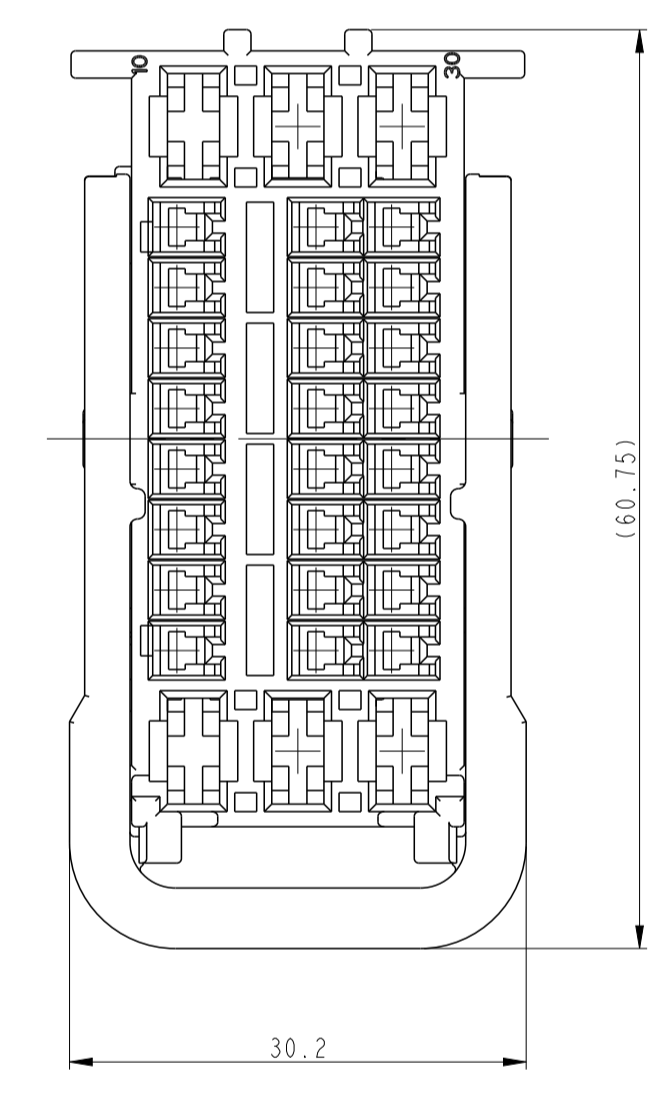
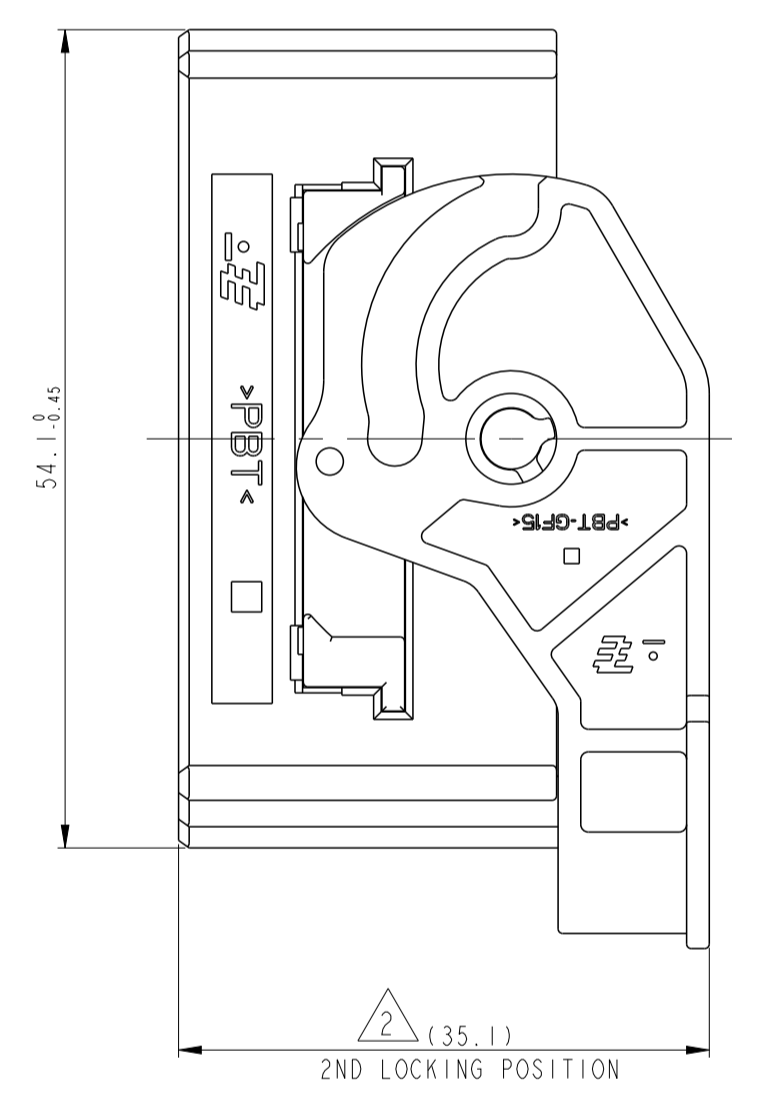
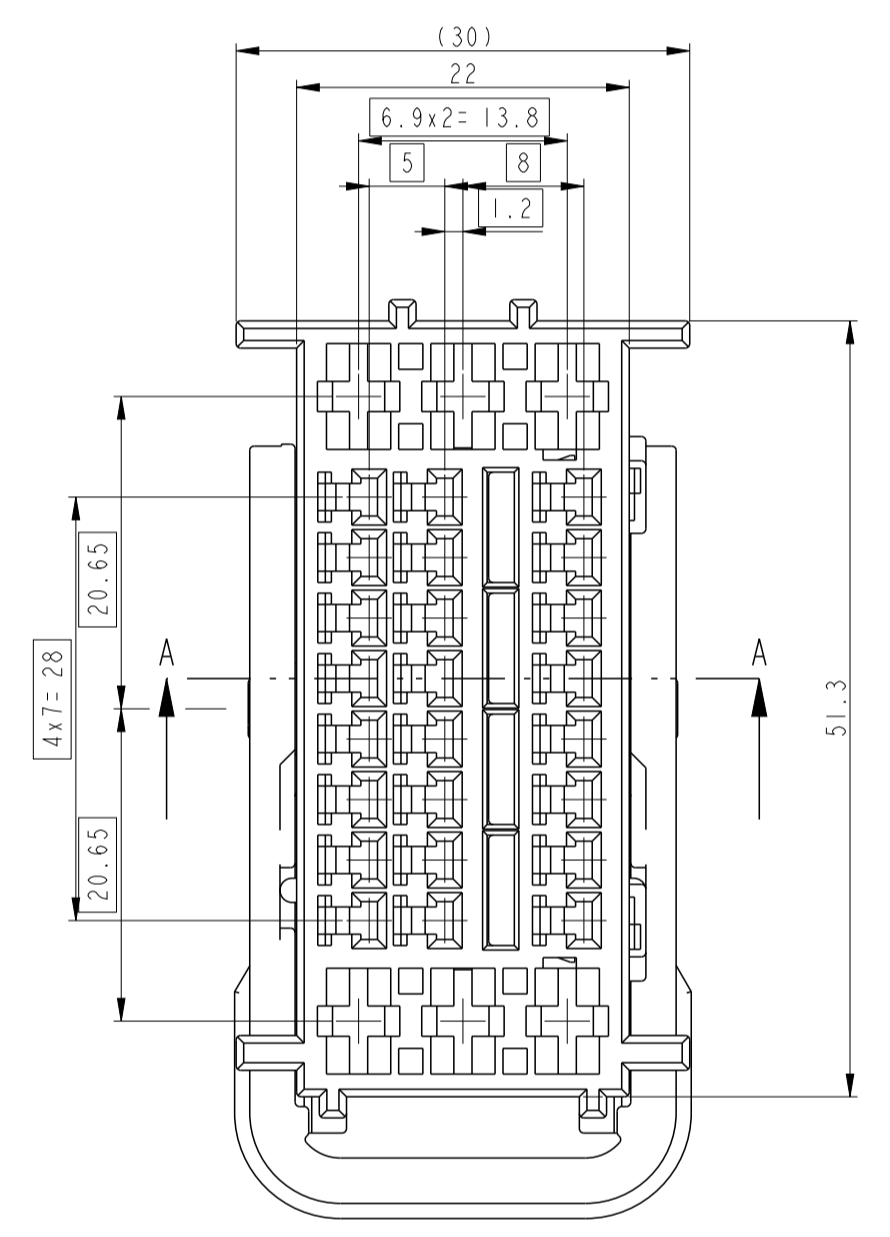
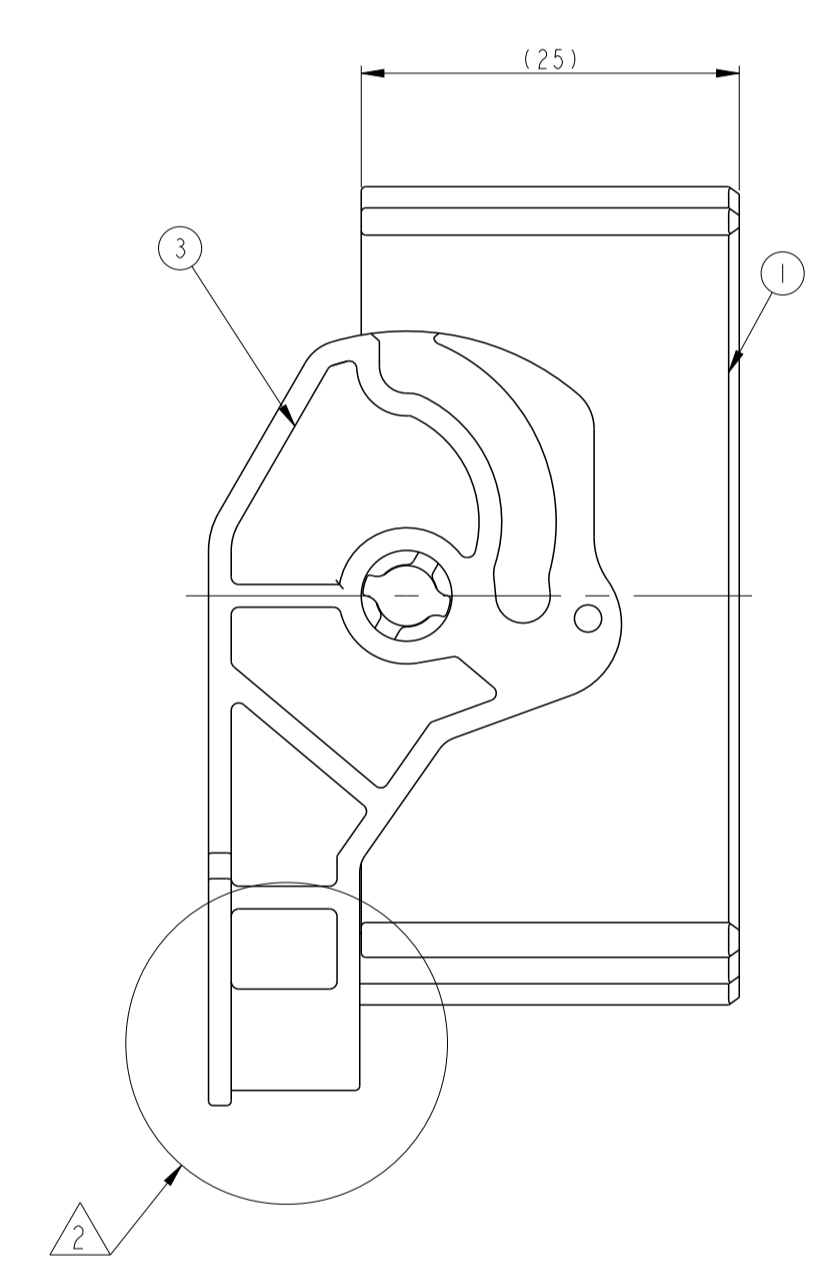
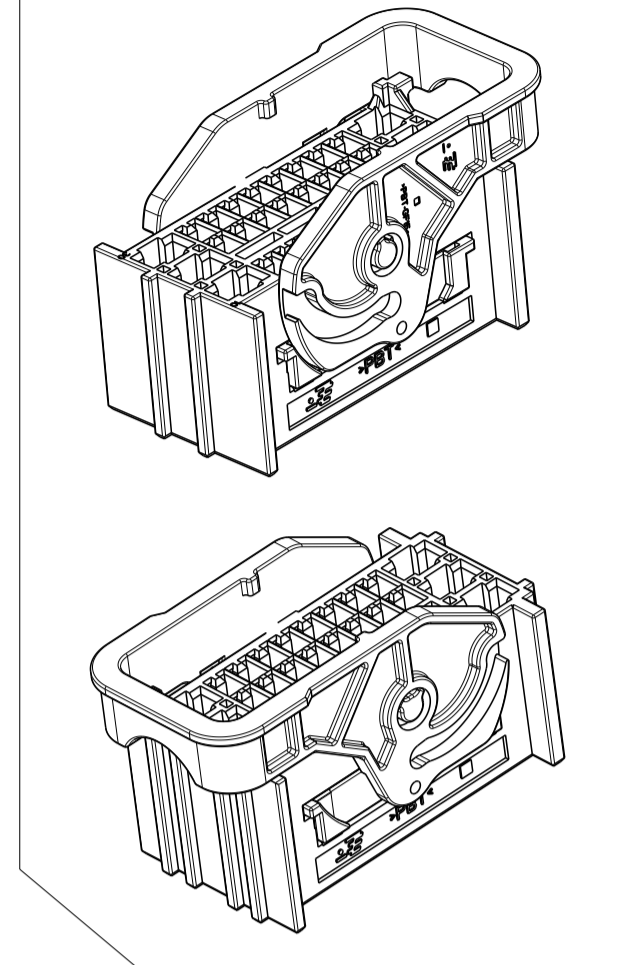
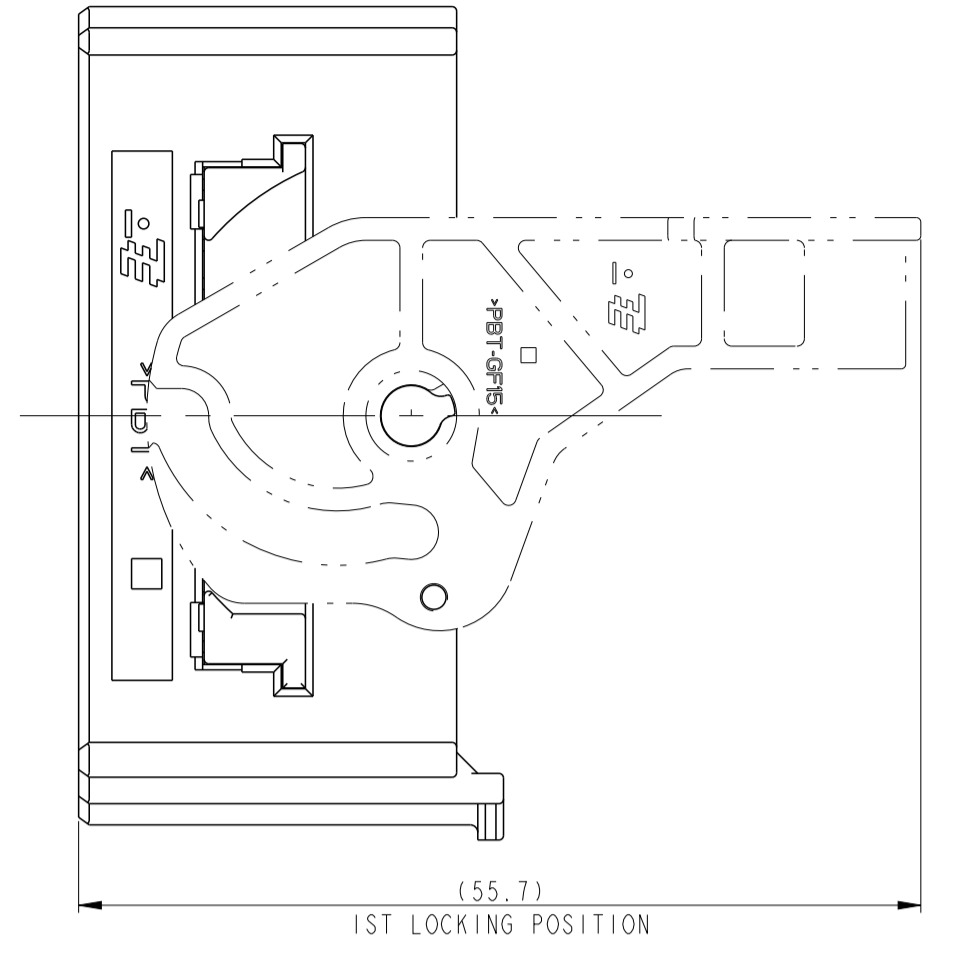
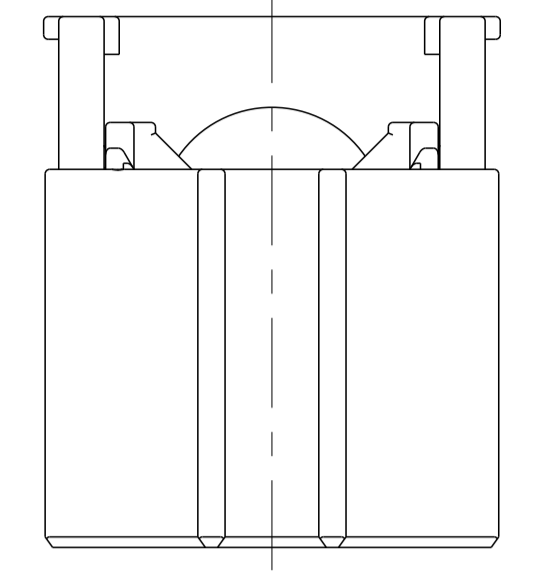
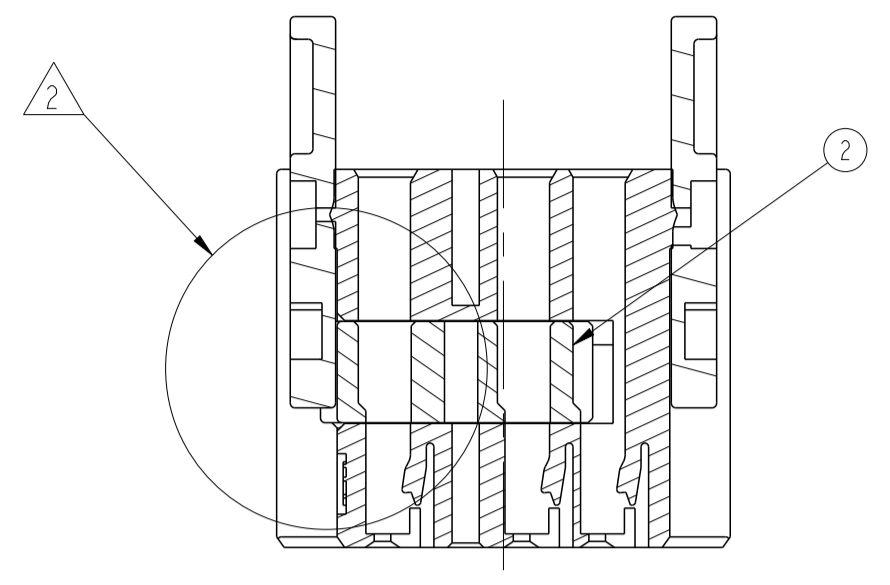


REVISIONS				
P	LTN	DESCRIPTION	DATE	OWN APVD
A		RELEASED	06 JUN '09	IS HG
B		REVISED (ECR-12-009225)	06 JUN '12	JM HG
C		REVISED (ECR-12-013528)	26 SEP '12	JM HG
C1		REVISED (ECR-19-014500)	17SEP19	YJ YJ



<TABLE 1>

TYPE	P/N	WIRE SIZE	MATERIAL/FINISH
.090	0-1897753-1	0.22	COPPER ALLOY PRE-TIN
	0-1743654-1	0.3-0.5	
	0-1743655-1	0.75-1.25	
	0-1743656-1	1.5-2.0	
.250	0-1897598-1	2.5	PHOS. BRONZE PRE-TIN
	0-927827-2	2.0-2.7	
	0-927833-2	2.7-3.7	
	0-927824-2	3.3-4.5	

- NOTES:
- GENERAL TOLERANCE: 0<X<50mm ±0.3, ±3°
50mm<X ±0.5, ±5°
 - CONDITION OF DELIVERY:
DBL IN 1ST LOCKING POSITION
LEVER HSG IN 2ND LOCKING POSITION
 - APPLIED REC. CONTACT P/N : TABLE 1
 - DIRECTION OF LEVER ROTATION : TABLE 2
 - DOMENSION OF KEYING SLOT OF PLUG : TABLE 2

<TABLE 2>

4 DIRECTION OF LEVER ROTATION	5 DIMENSION OF KEYING SLOT OF PLUG	
TYPE - A	0-2005040-2 (BLACK)	1-2005040-3 (GRAY)
TYPE - B	6 5-2005040-6 (RED)	

THIS DRAWING IS A CONTROLLED DOCUMENT.

TE Connectivity

NAME: .090/.250 HYBRID 30P PLUG ASSY (LIF)

SIZE: A1 CAGE CODE: 00779 DRAWING NO: 2005040

SCALE: 1:1 SHEET: 1 OF 1

DATE: 06 JUN '09

APPROVED: JW JUNG

DESIGNED: HG CHO

PRODUCT SPEC: -

APPLICATION SPEC: -

WEIGHT: -

CUSTOMER DRAWING