

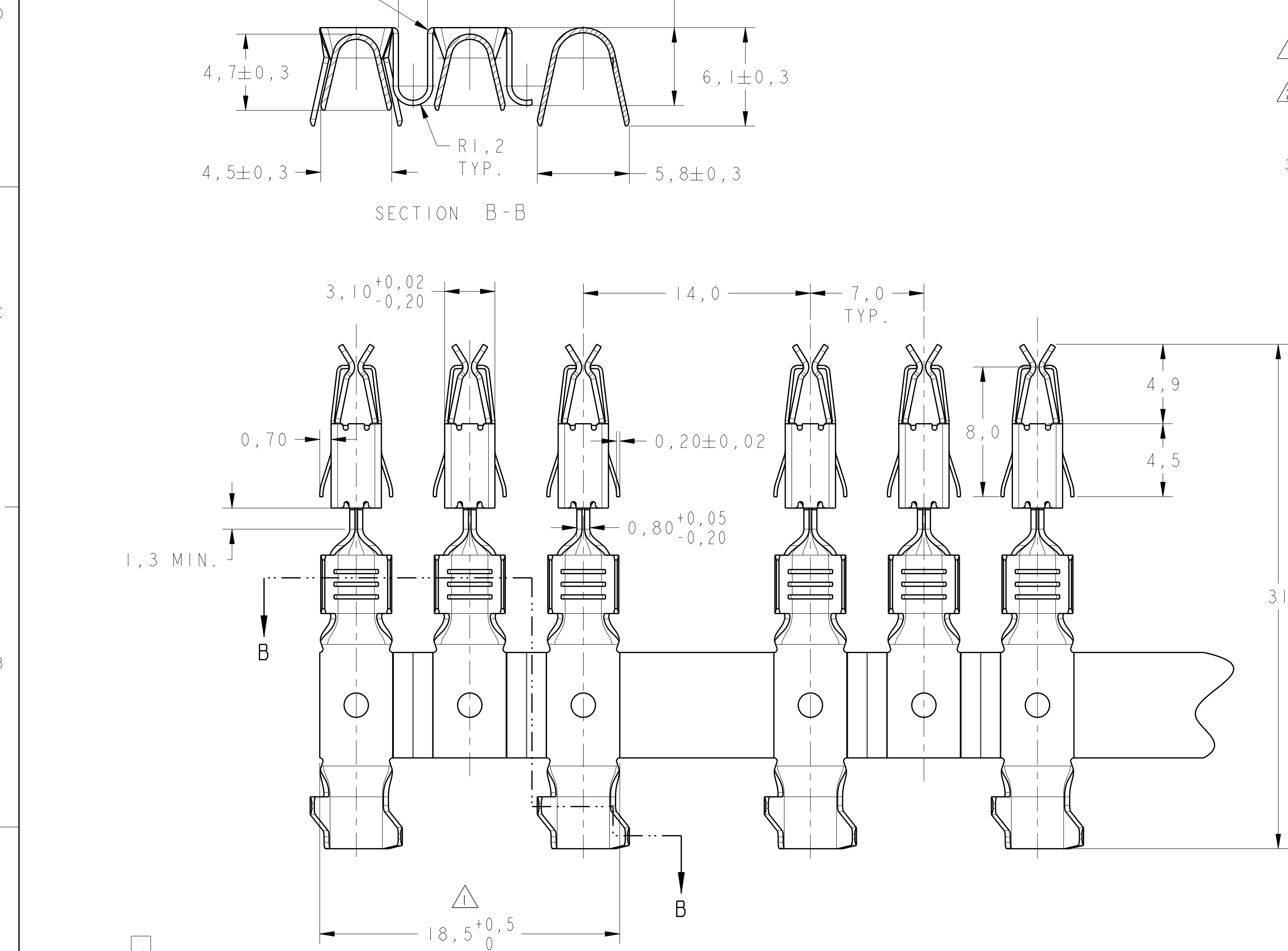
REVISIONS					
P	LTR	DESCRIPTION	DATE	DWN	APVD
	B	REVISED DESIGN ECO-13-019637	19DEC2013	NCL	GOJ
	B1	REVISED BY ECO-17-003020	06MAR2017	LAA	NS
	B2	REVISED DRAWING ECO-17-005367	17APR2017	NCL	NMS

D

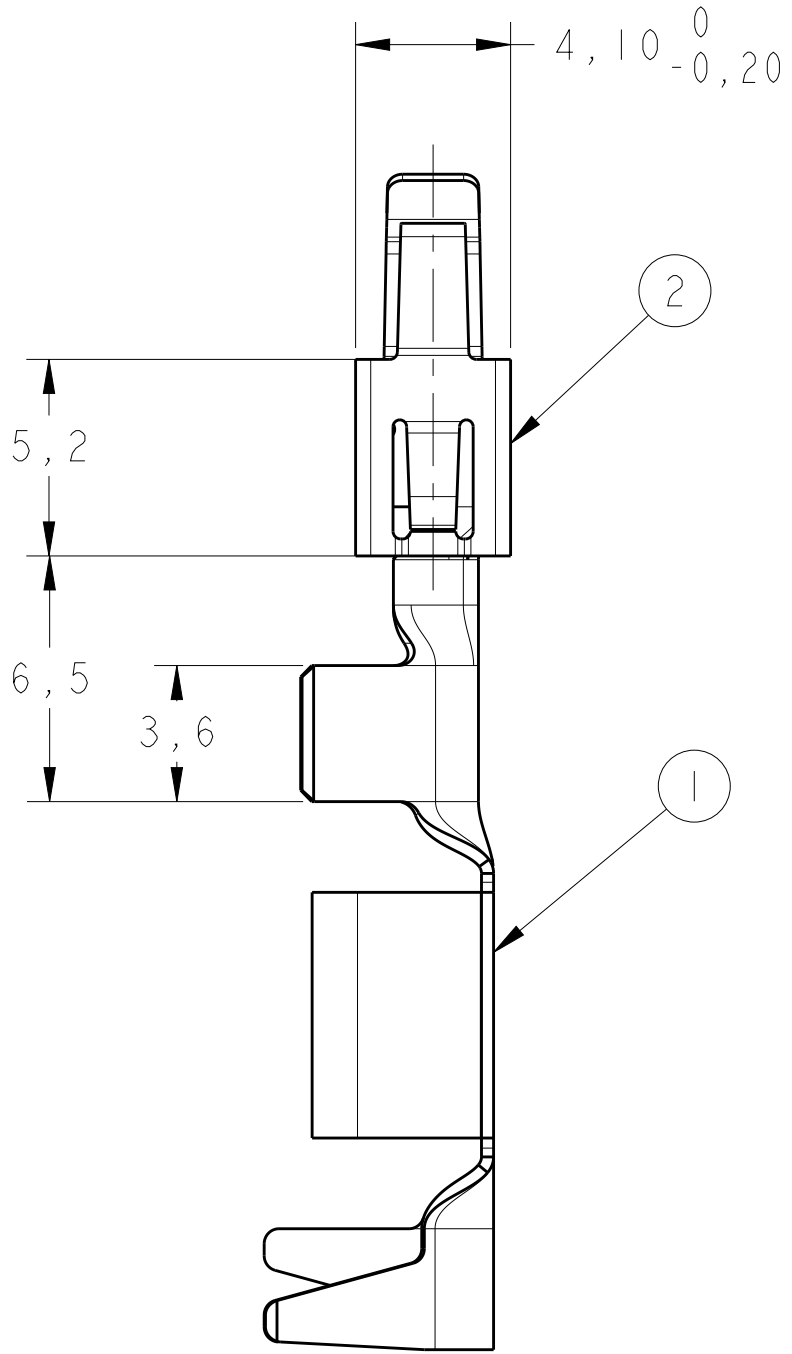
C

B

A



- 1 - CUTTING DIMENSION FOR APPLICATOR;  
DIMENSÃO DE CORTE PARA O APLICADOR;
- 2 - THE CONTACTS WILL BE SUPPLIED IN CONTINUOUS  
STRIP FORM ONLY;  
OS TERMINAIS SERÃO FORNECIDOS EM FORMA  
DE FITA CONTINUA SOMENTE;
- 3 - FOR BUSBAR INSERTION/EXTRACTION TOOL  
SEE TE DRAWING 1893132.  
PARA INSERÇÃO DE BUSBAR / FERRAMENTA DE EXTRACÇÃO  
VEJA O DESENHO 1893132.



D

C

B

A

OBSOLETE		2	SPRING, CONTACT	STAINLESS STEEL	BLANK	2,5 - 4,0	2,7 - 3,7	2
		1	BODY, CONTACT	CuFe	PRE TIN/PRÉ ESTANHADO			
REQ. PER ASSY	ITEM	DESCRIPTION		MATERIAL	FINISH	WIRE RANGE mm2	INSULATION RANGE Ø	APPLICATOR FEED
1989303	-2-							

DIRECTION OFF TOP RELL		THIS DRAWING IS A CONTROLLED DOCUMENT.		DWN E. LOPES 28NOV2007	TE Connectivity			
				CHK P. L. FARIA 28NOV2007				
				APVD D. A. OLIVEIRA 28NOV2007				
				PRODUCT SPEC 108-18013	NAME JUNIOR POWER TIMER CONTACT BUSBAR, 3 WAYS			
				APPLICATION SPEC 114-18050				
				WEIGHT -				
				CUSTOMER DRAWING				
				SCALE 5:1	SHEET 1		OF 1	REV B2