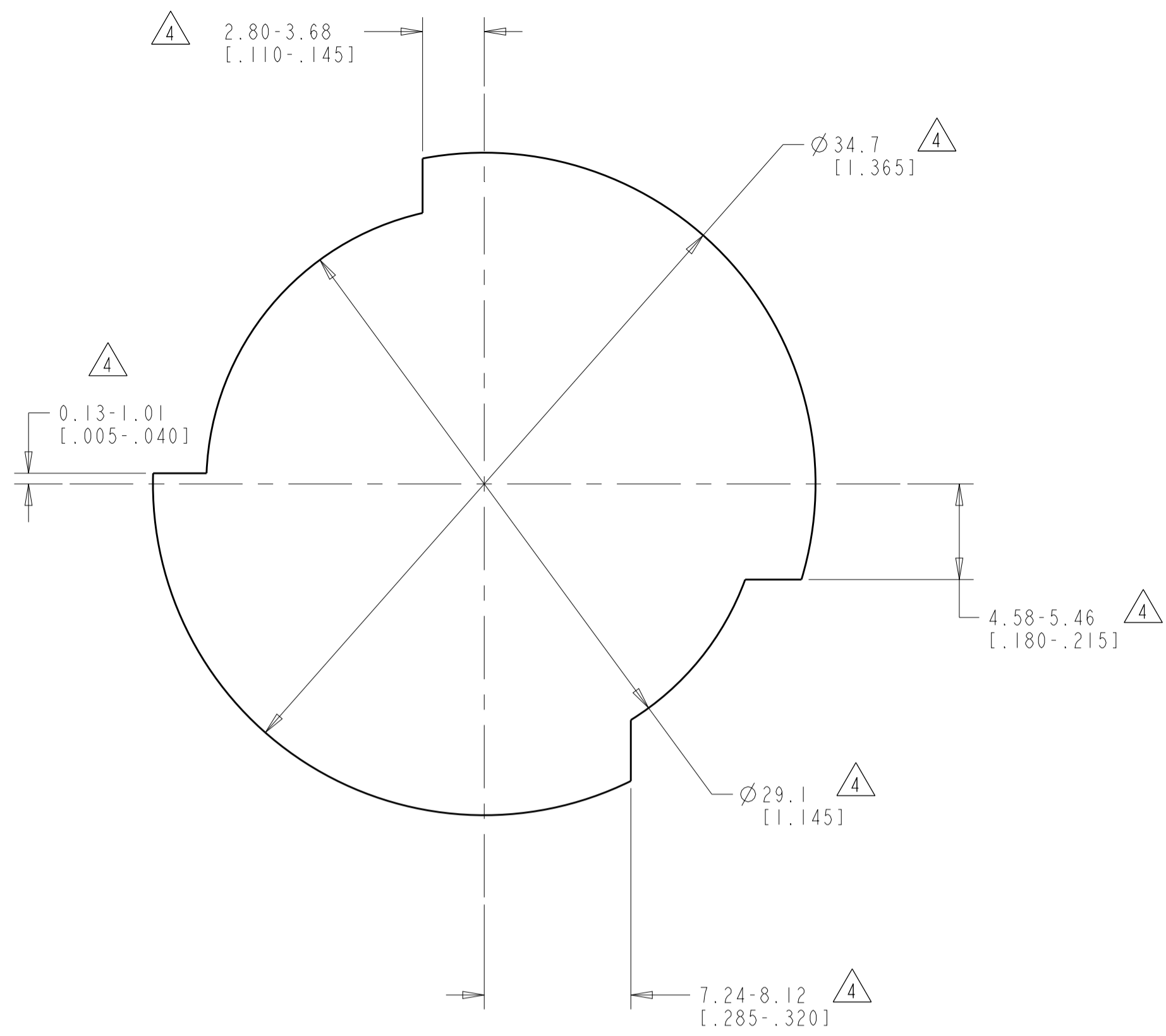
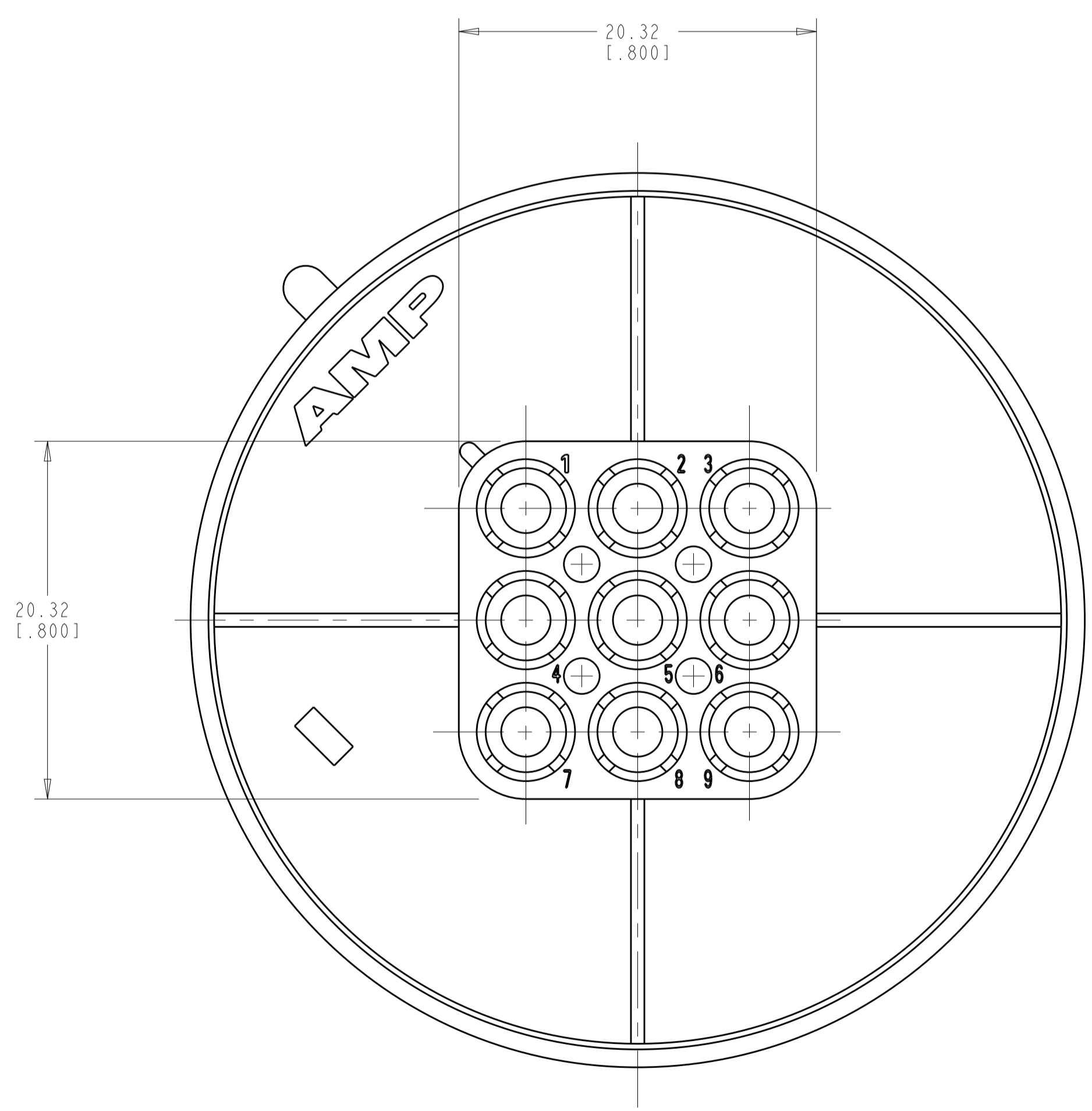
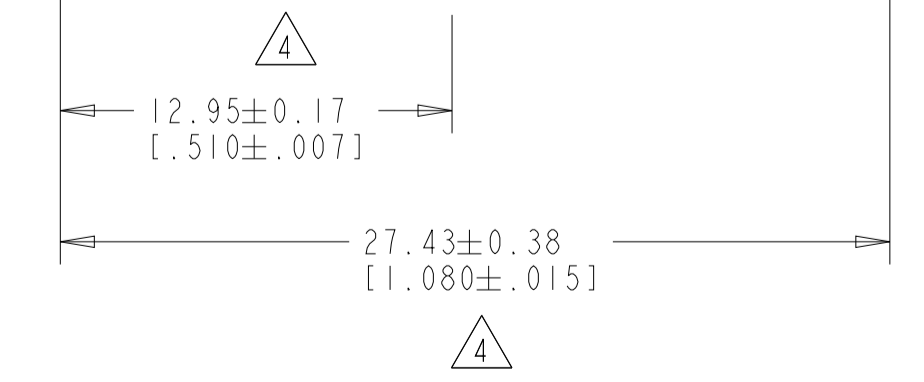
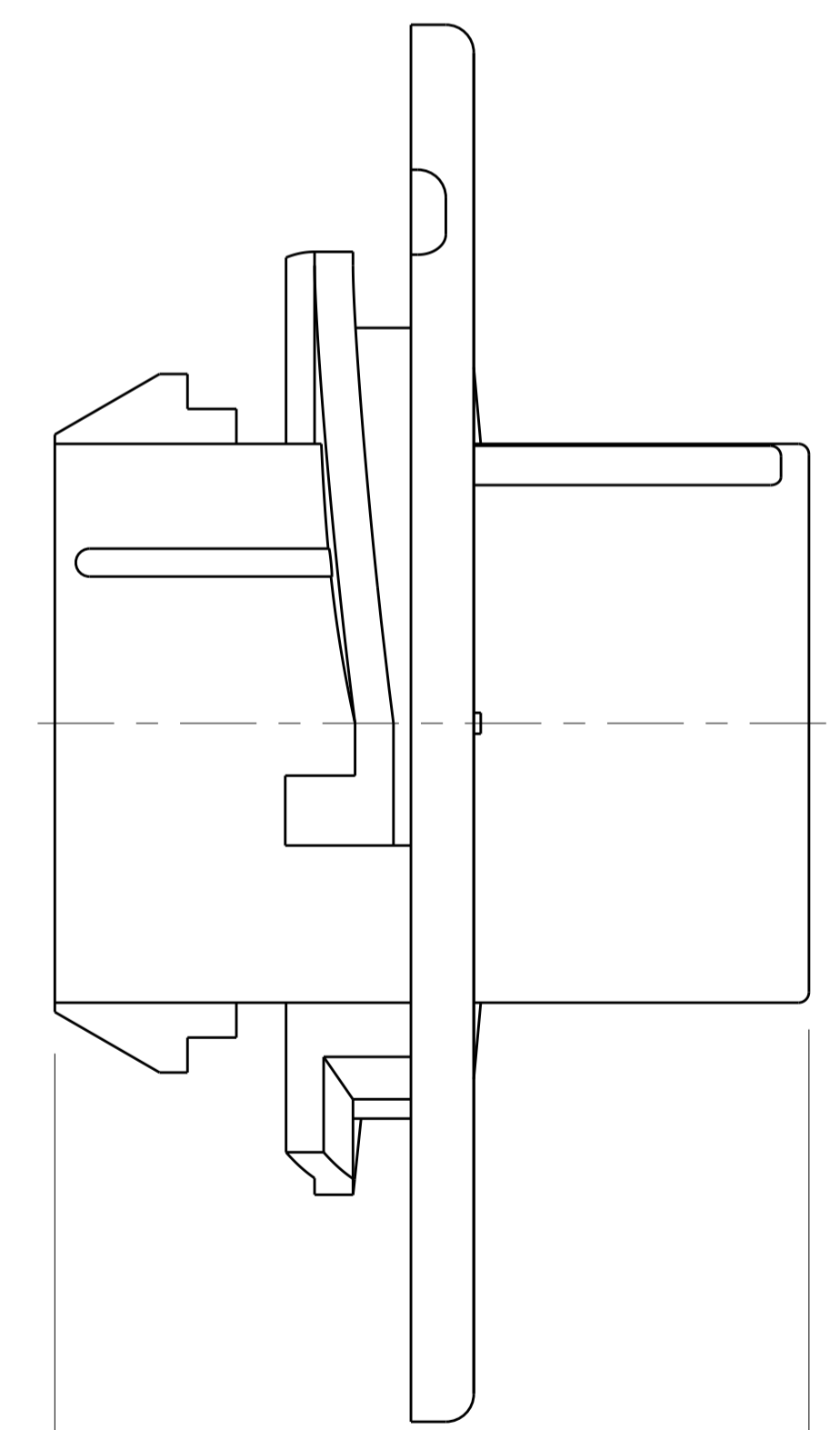
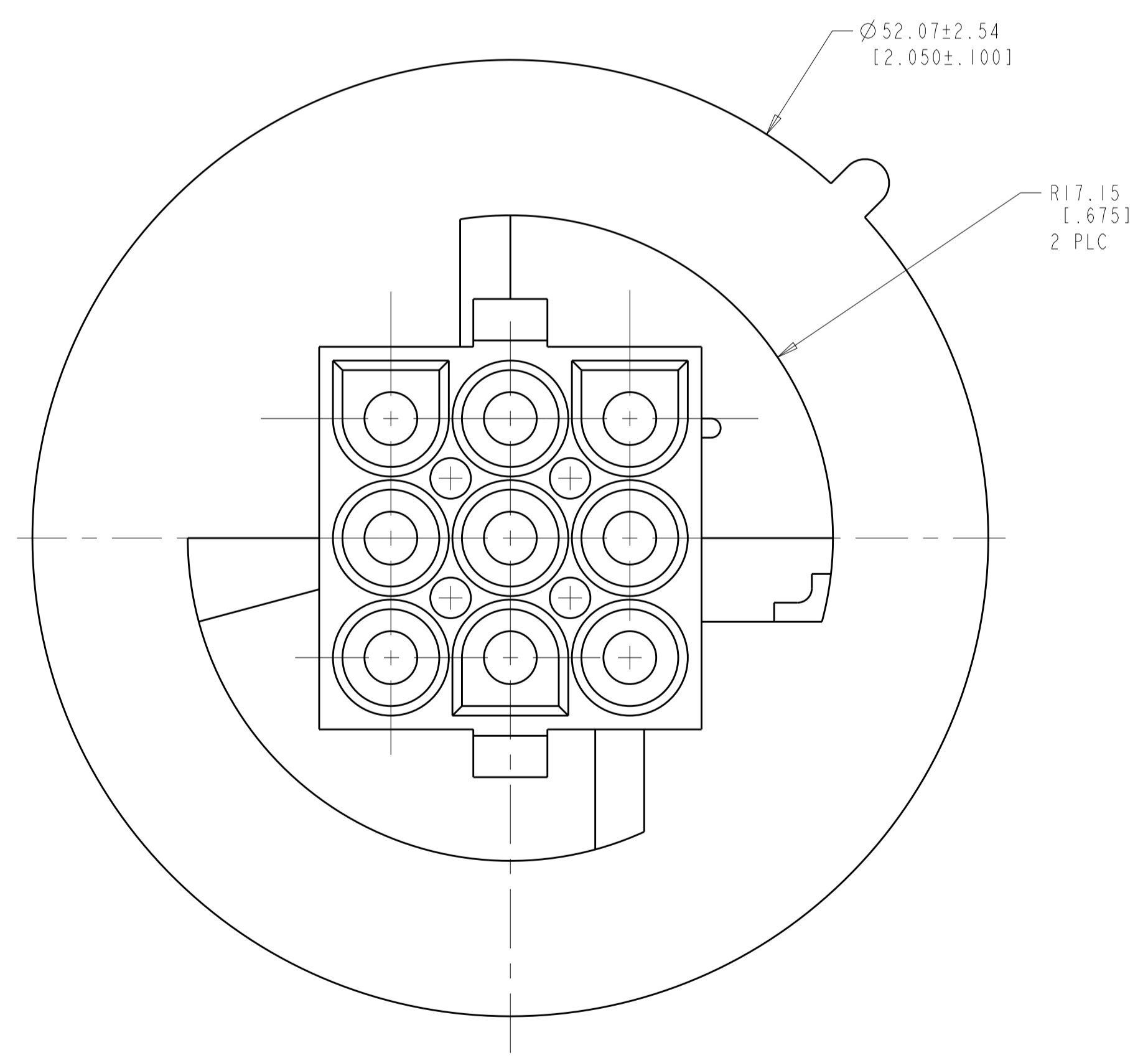
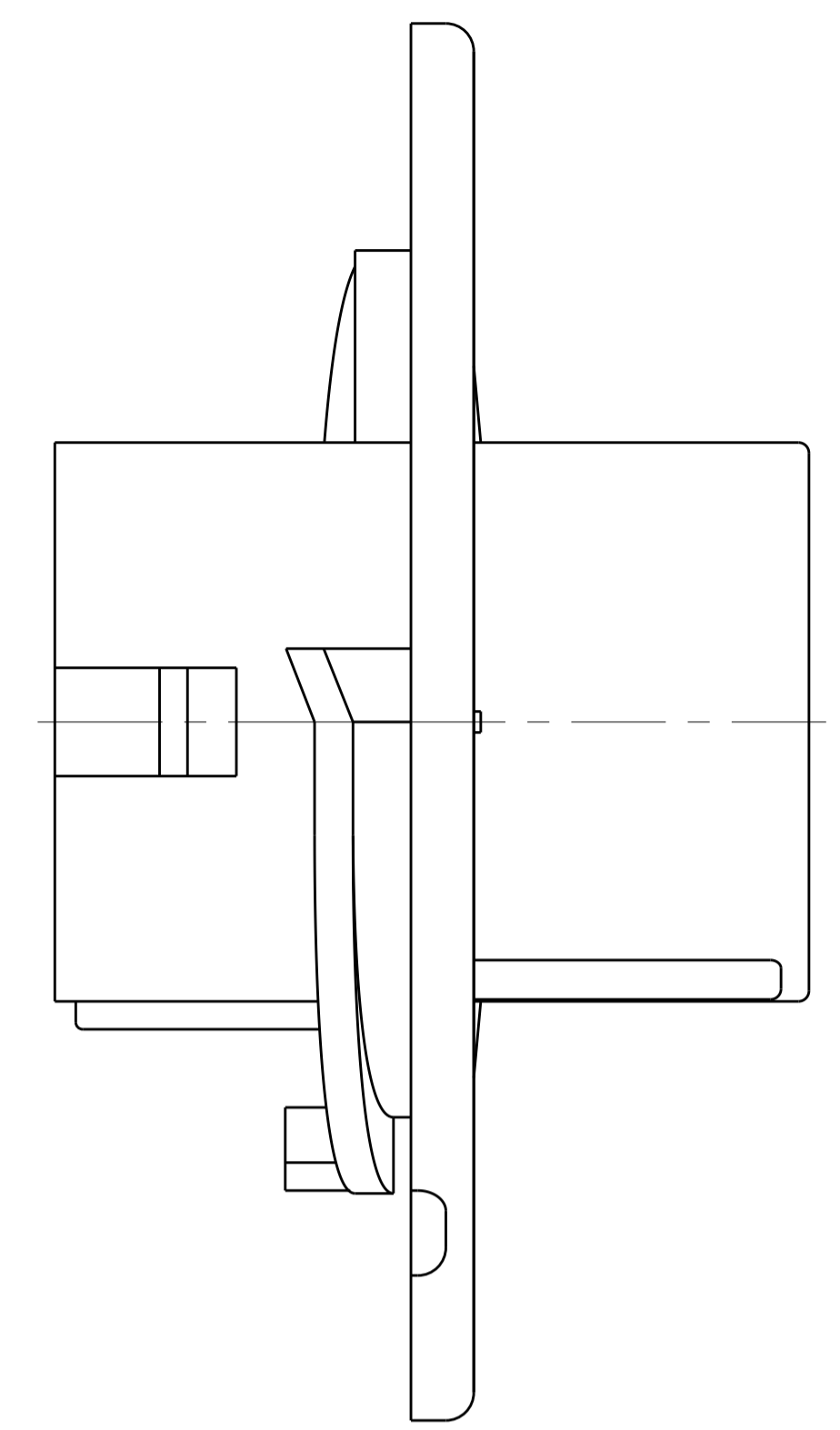


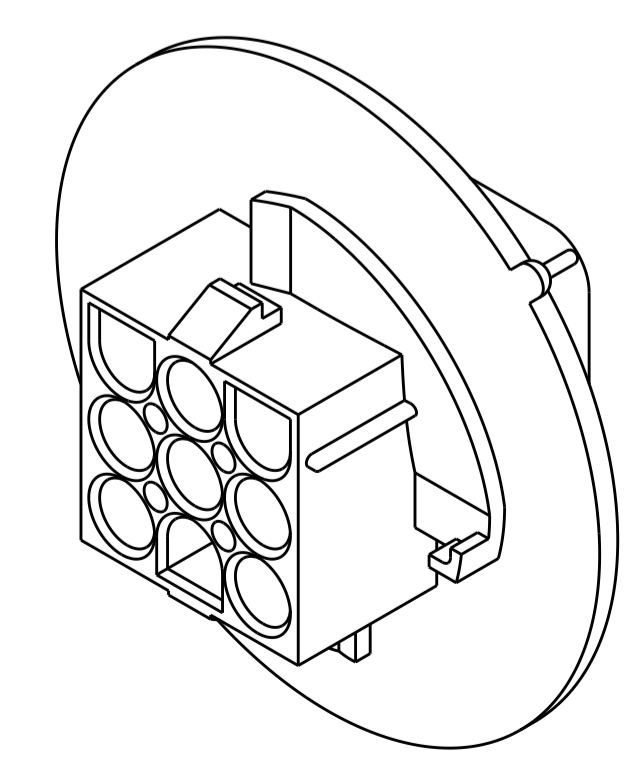
LOC	DIST	REVISIONS			
P	LTN	DESCRIPTION	DATE	DWN	APVD
I		CREATED	27MAR2017	RS	KR



RECOMMENDED CUT OUT



- MATES WITH APPROPRIATE UNIVERSAL MATE-N-LOK™ PLUG.
 - RECOMMENDED PANEL THICKNESS 0.76 - 2.29 [1.030 - .090].
 - PANEL MUST BE PUNCHED SO THAT THE HOUSING ENTERS THE PANEL IN THE SAME DIRECTION AS THE PUNCH.
- $\triangle 4$ DIMENSIONS INDICATED ARE REFERENCE. ADDITIONAL GROWTH DUE TO SUBSEQUENT MOISTURE ABSORPTION MAY OCCUR.
 $\triangle 5$ PRELIMINARY- NOT FOR PRODUCTION



3-DIMENSIONAL MODEL
SCALE 2:1

NATURAL	1969882-1	$\triangle 5$
COLOR	PART NUMBER	

THIS DRAWING IS A CONTROLLED DOCUMENT.		DWN: R. SMITH 27-MARCH-2017	TE Connectivity	
DIMENSIONS: mm [INCHES]		CHK: K. RANDOLPH 27-MARCH-2017	CAP. 9 CIRCUIT, UNIVERSAL MATE-N-LOK(TM), SPECIAL	
TOLERANCES UNLESS OTHERWISE SPECIFIED:		APVD: K. RANDOLPH 27-MARCH-2017	SIZE: A1 CAGE CODE: 00779 DRAWING NO: 1969882	
0 PLC	±	PRODUCT SPEC	SHEET 1 OF 1	
1 PLC	±	APPLICATION SPEC	REV E	
2 PLC	±0.511(.020)	WEIGHT	SCALE 4:1	
3 PLC	±	CUSTOMER DRAWING		
4 PLC	±			
ANGLES	±			
	±40° 30'			
MATERIAL: VYDYNE FR350J	FINISH: -			
GWT VO NYLON				

