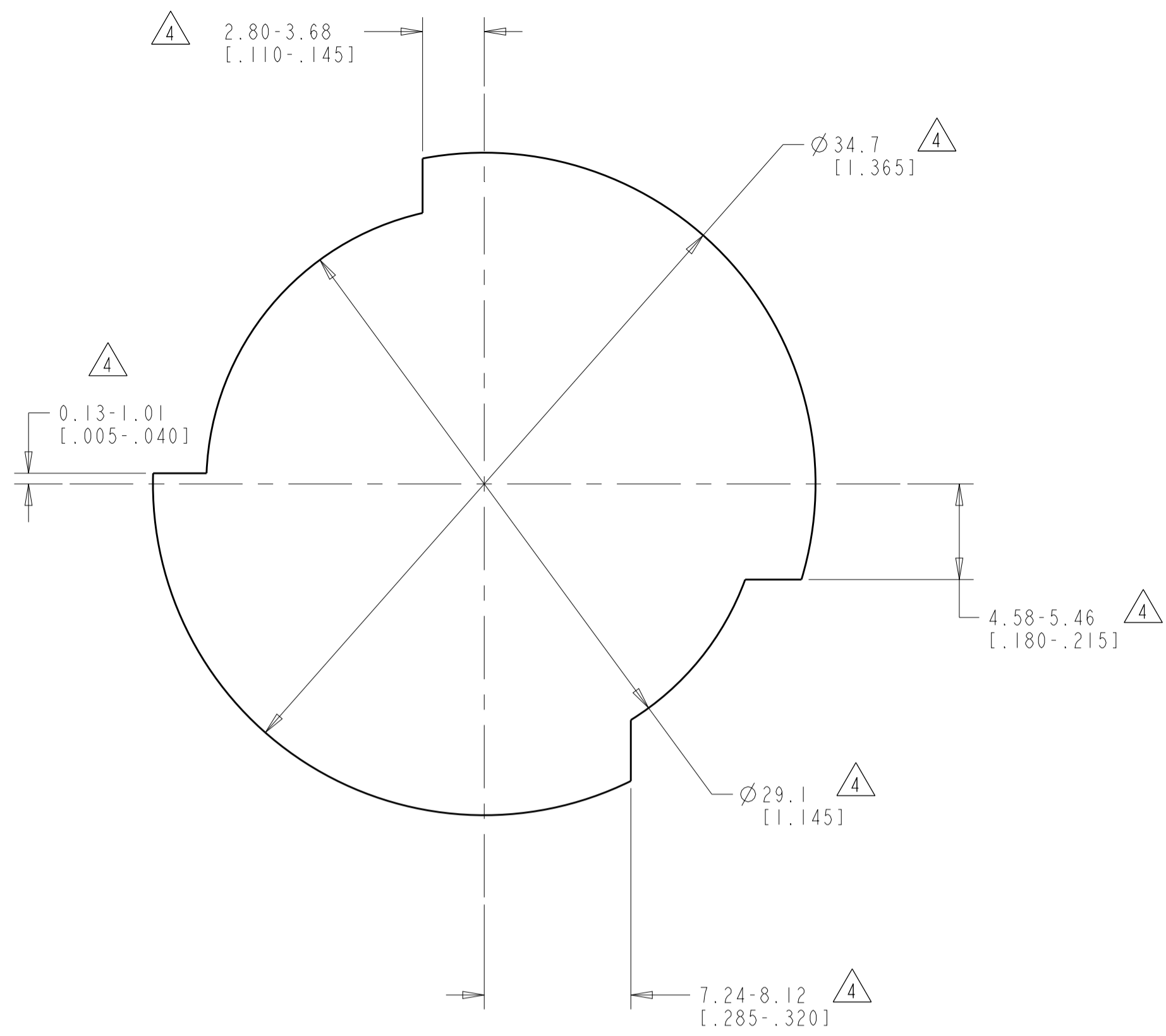
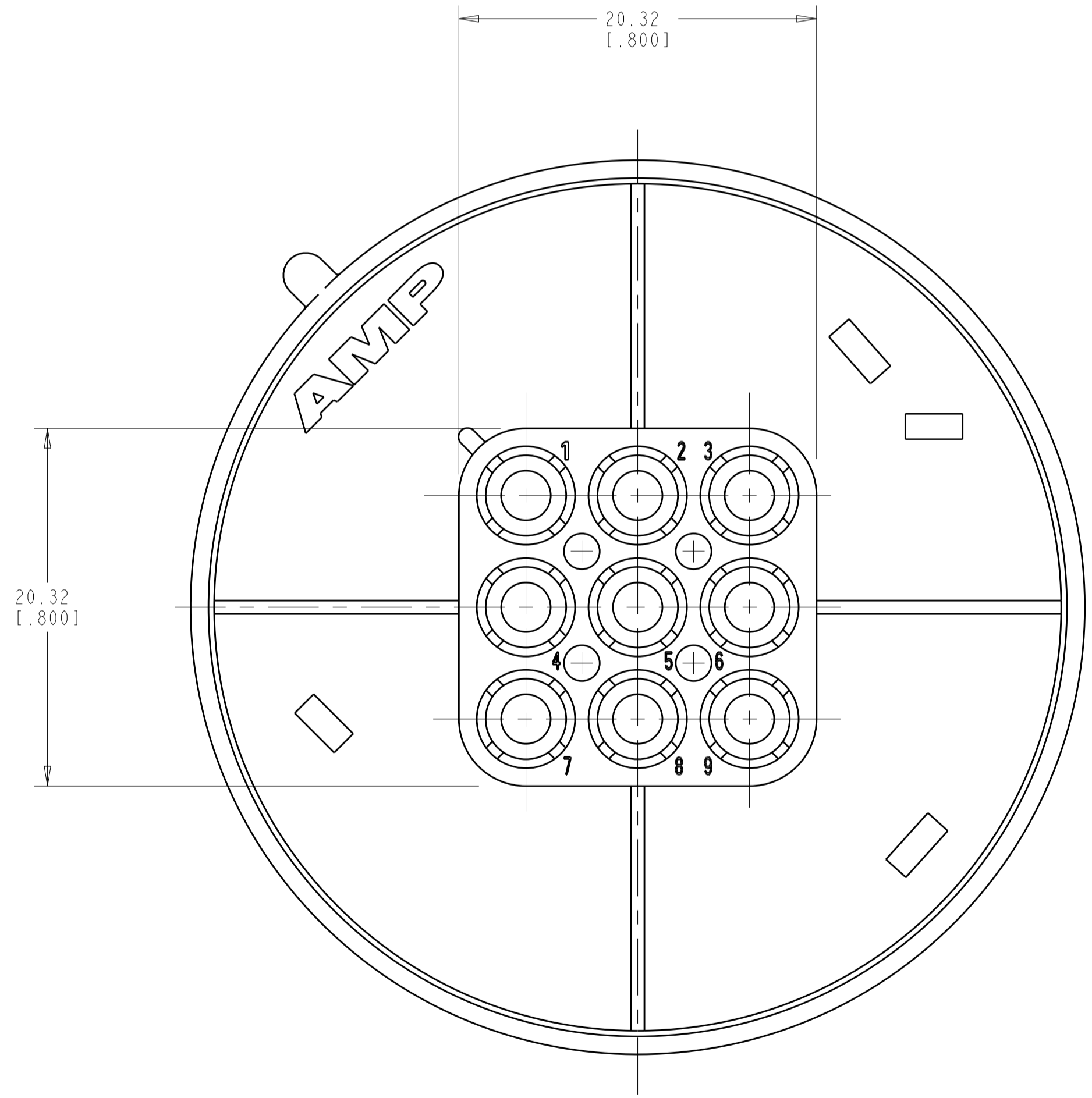
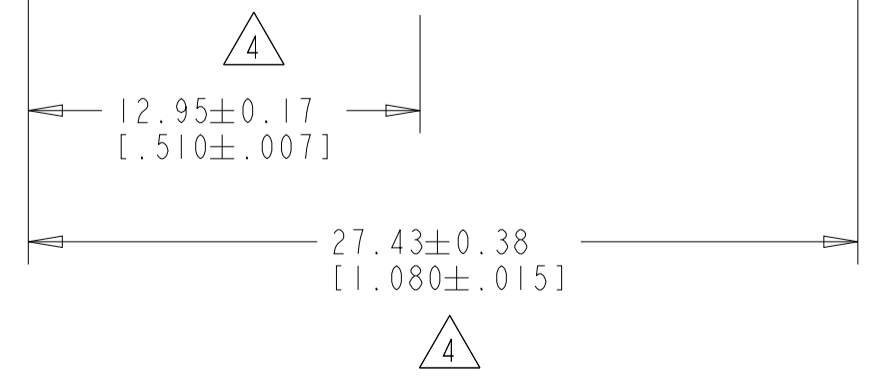
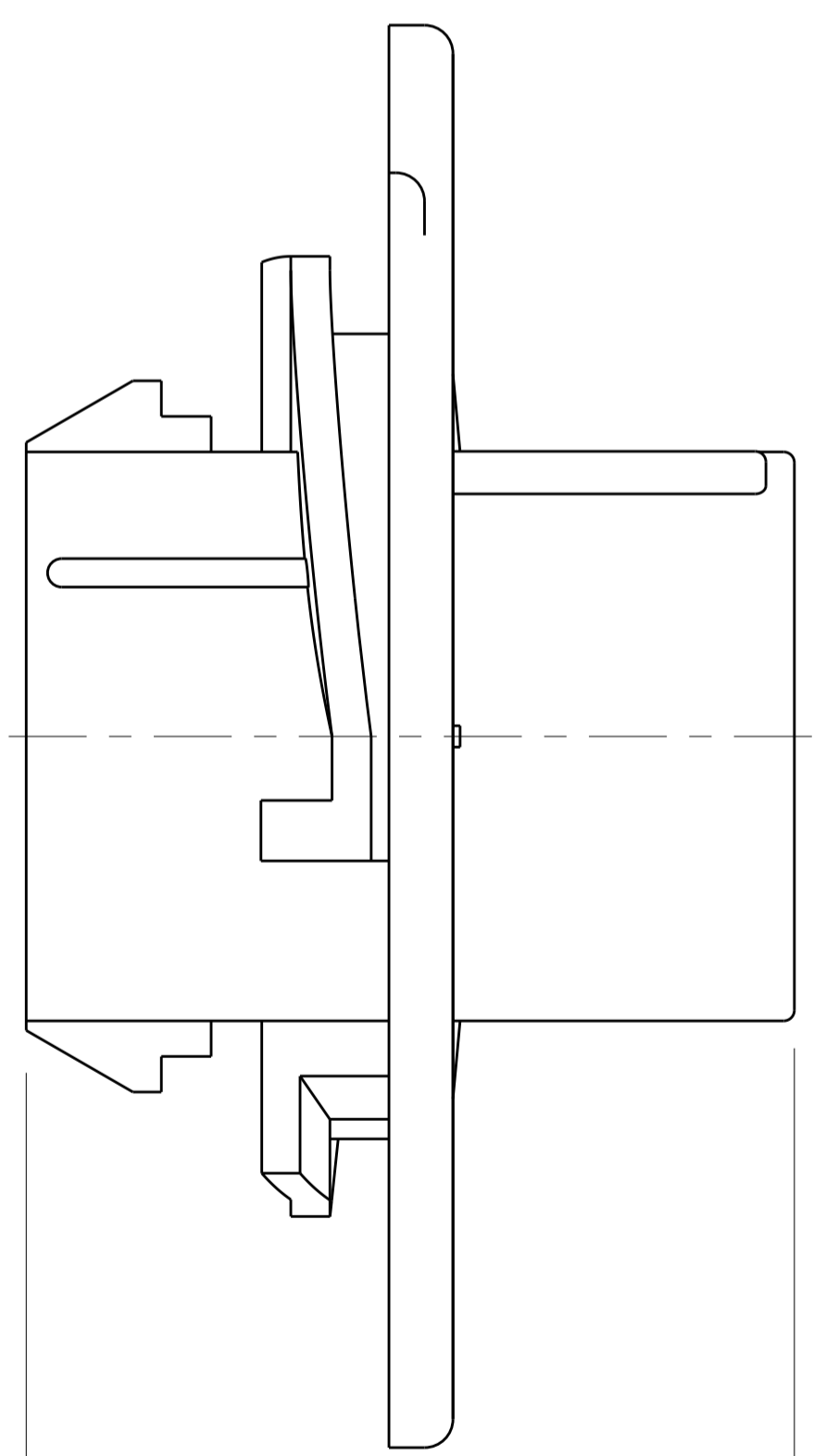
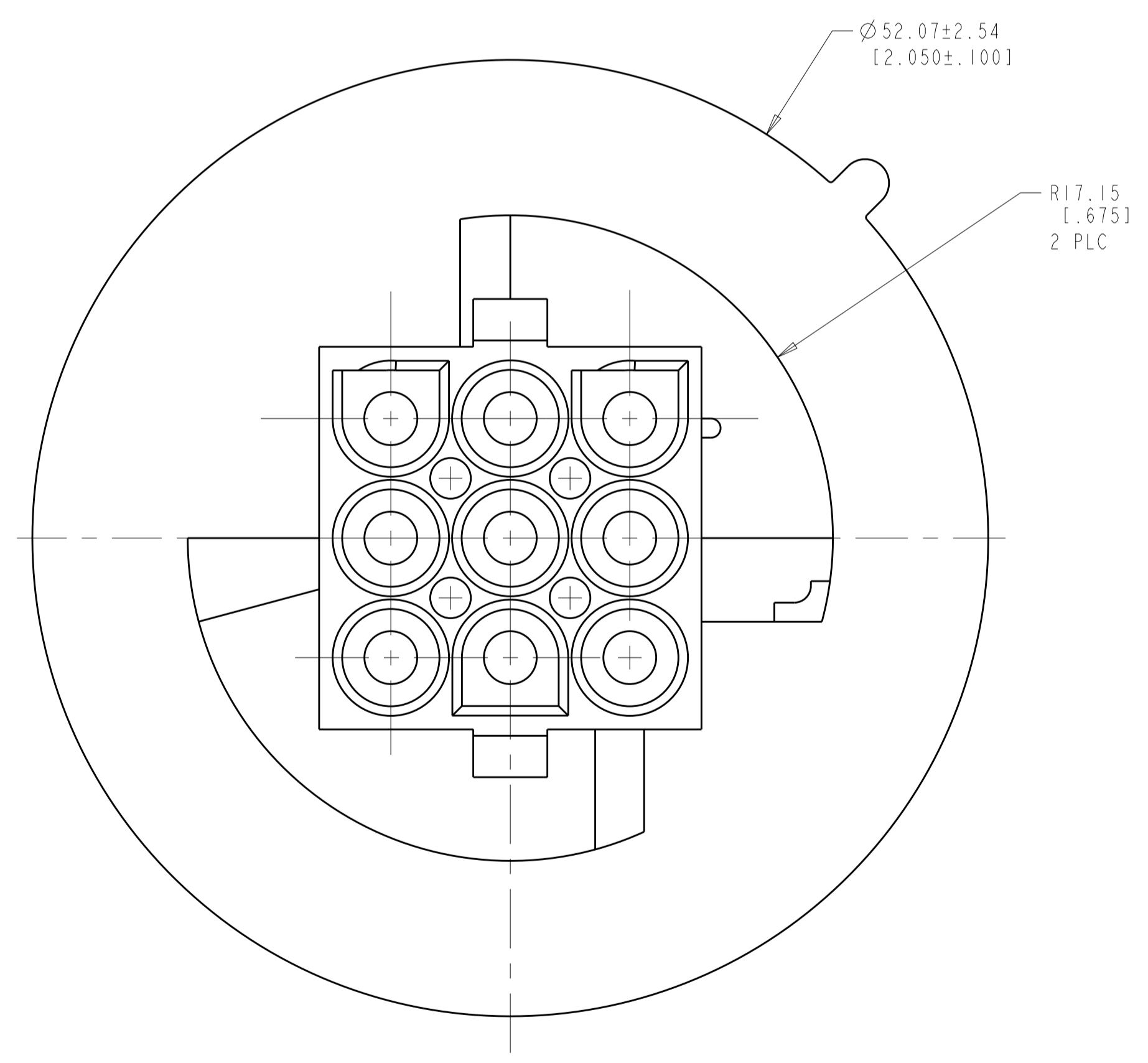
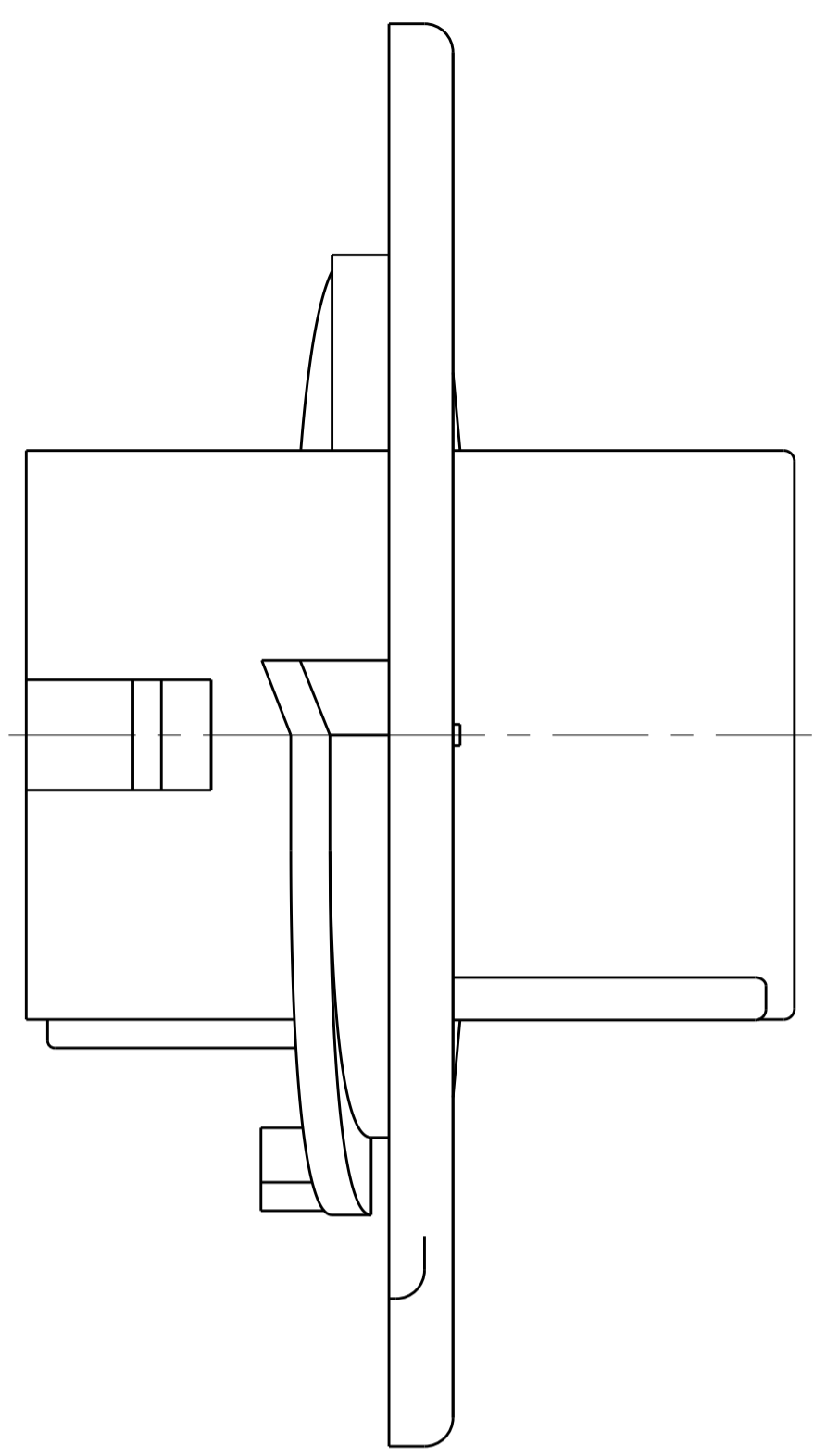


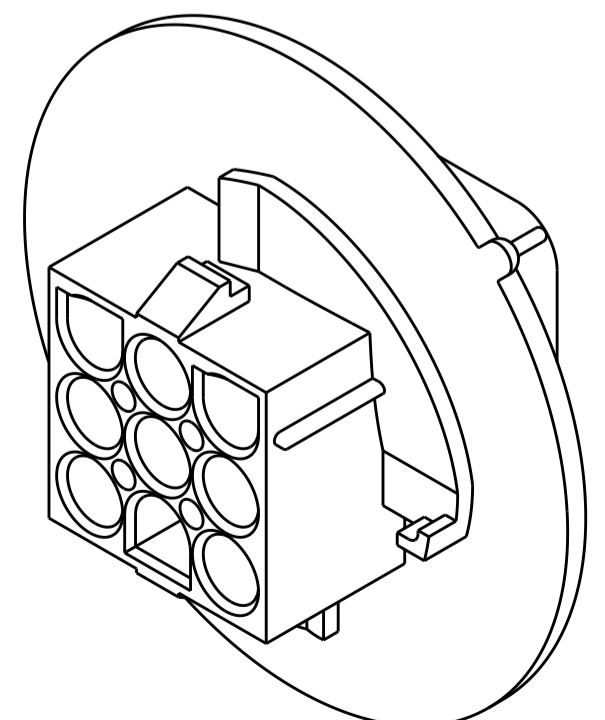
LOC	DIST	REVISIONS					
CM	00	P	LTN	DESCRIPTION	DATE	DWN	APVD
		A		RELEASED PER ECO-17-018376	14DEC2017	RS	KR



RECOMMENDED CUT OUT



- MATES WITH APPROPRIATE UNIVERSAL MATE-N-LOK™ PLUG.
 - RECOMMENDED PANEL THICKNESS 0.76 - 2.29 [1.030 - .090].
 - PANEL MUST BE PUNCHED SO THAT THE HOUSING ENTERS THE PANEL IN THE SAME DIRECTION AS THE PUNCH.
- △ DIMENSIONS INDICATED ARE REFERENCE. ADDITIONAL GROWTH DUE TO SUBSEQUENT MOISTURE ABSORPTION MAY OCCUR.



3-DIMENSIONAL MODEL SCALE 2:1

NATURAL	1969882-1
COLOR	PART NUMBER

THIS DRAWING IS A CONTROLLED DOCUMENT.		DWN: R. SMITH 27-MARCH-2017	TE Connectivity	
DIMENSIONS: mm [INCHES]		CHK: K. RANDOLPH 27-MARCH-2017	CAP. 9 CIRCUIT, UNIVERSAL MATE-N-LOK(TM), SPECIAL	
TOLERANCES UNLESS OTHERWISE SPECIFIED:		APVD: K. RANDOLPH 27-MARCH-2017	SIZE: A1	
0 PLC	±	PRODUCT SPEC	CAGE CODE: 00779	
1 PLC	±	APPLICATION SPEC	DRAWING NO: 1969882	
2 PLC	±0.511(.020)	SIZE: 114-1010	SCALE: 4:1	
3 PLC	±	WEIGHT	SHEET 1 OF 1	
4 PLC	±	FINISH	REV A	
ANGLES	±40° 30'	CUSTOMER DRAWING		
MATERIAL: GWT VO NYLON				

