

4

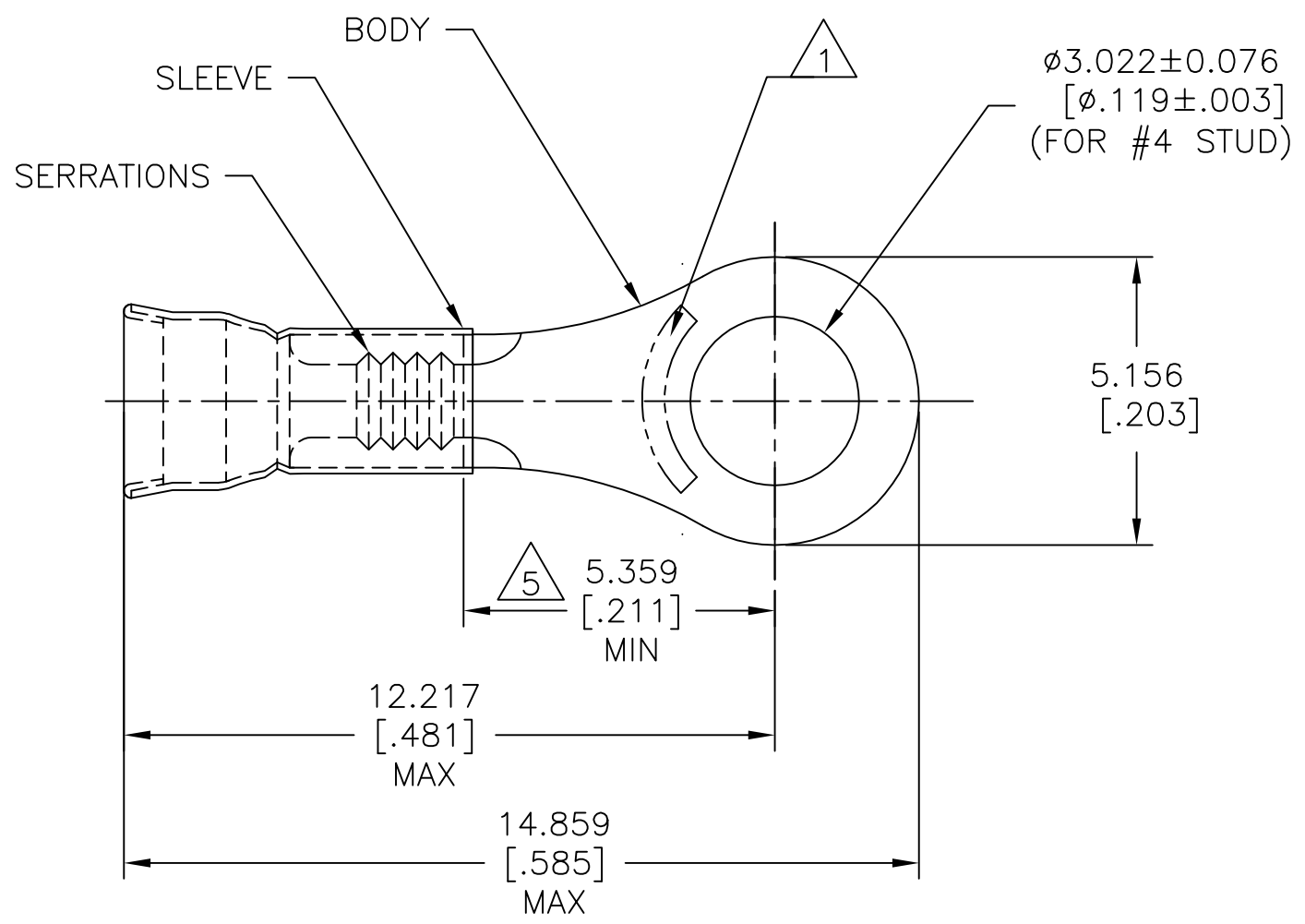
3

2

1


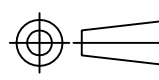
THIS DRAWING IS UNPUBLISHED. RELEASED FOR PUBLICATION  
 © COPYRIGHT - By - ALL RIGHTS RESERVED.

REVISIONS					
P	LTR	DESCRIPTION	DATE	DWN	APVD
	1	NEW DRAWING PER ECO-13-001411	29JAN13	KH	DR
	A	REVISED PER ECO-17-007412	23MAY2017	RS	DR



- 1 STAMP AMP LOCATE APPROX AS SHOWN.
- 2 WIRE INSUL DIA,  $\phi 1.270-2.082$  [ $\phi 0.050-.082$ ]
- 3 BODY MATL THK,  $0.457\pm 0.050$  [ $0.018\pm 0.002$ ]
- 4 CLEANED-UNPLATED.
- 5 APPLIES FROM EDGE OF METAL WIRE BARREL TO CENTER OF STUD HOLE.

1000	LOOSE PIECE	1958445-1
QTY	PACKAGE TYPE	PART NO

AMP INCORPORATED CUSTOMER SERVICE SYSTEMS		MAX RECOMMENDED OPERATING TEMPERATURE: -	THIS DRAWING IS A CONTROLLED DOCUMENT.		DWN KIRAN HOLAL 29JAN13	 TE Connectivity  NAME TERMINAL, RING, DIAMOND GRIP, WIRE SIZE 26-22 AWG
FOR ADDITIONAL PRODUCT INFORMATION OR COPIES OF DRAWINGS AND TECHNICAL DOCUMENTS	PRODUCT INFORMATION CENTER 1-800-522-6752	VOLTAGE RATING: -	DIMENSIONS: mm [INCHES]	TOLERANCES UNLESS OTHERWISE SPECIFIED:	CHK ROHDE DANIEL 29JAN13	
FOR APPLICATION TOOLING INFORMATION	TOOLING ASSISTANCE CENTER 1-800-722-1111	CIRCULAR MIL AREA: 0.10mm <sup>2</sup> -0.41mm <sup>2</sup> [202-810] STRANDED WIRE		0 PLC ± - 1 PLC ± - 2 PLC ± - 3 PLC ± 0.127[.005] 4 PLC ± - ANGLES ± -	APVD ROHDE DANIEL 29JAN13	
FOR ORDER ENTRY	1-800-526-5142	THIS DRAWING IS A CONTROLLED DOCUMENT FOR AMP INCORPORATED. IT IS SUBJECT TO CHANGE AND THE CONTROLLING ENGINEERING ORGANIZATION SHOULD BE CONTACTED FOR THE LATEST REVISION.	MATERIAL BODY, CU, SLV, CU PER ASTM B152	FINISH 4	PRODUCT SPEC -	
			CUSTOMER DRAWING		WEIGHT -	SIZE A3
					CAGE CODE 00779	
					DRAWING NO 1958445	
					RESTRICTED TO -	
					SCALE 8:1	
					SHEET 1 OF 1	
					REV A	