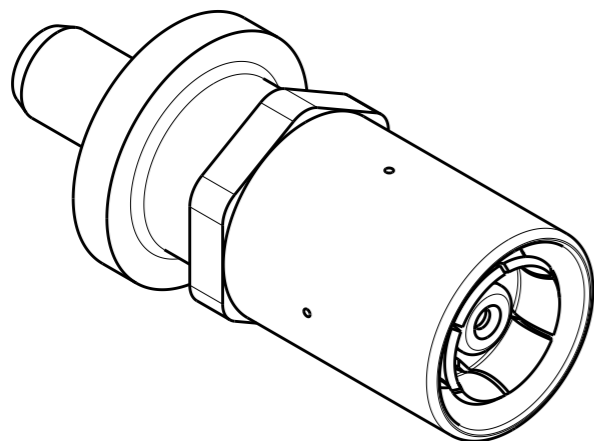
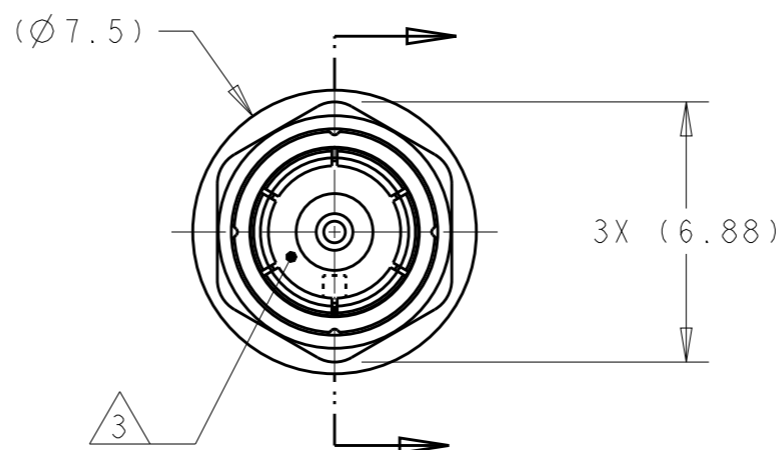
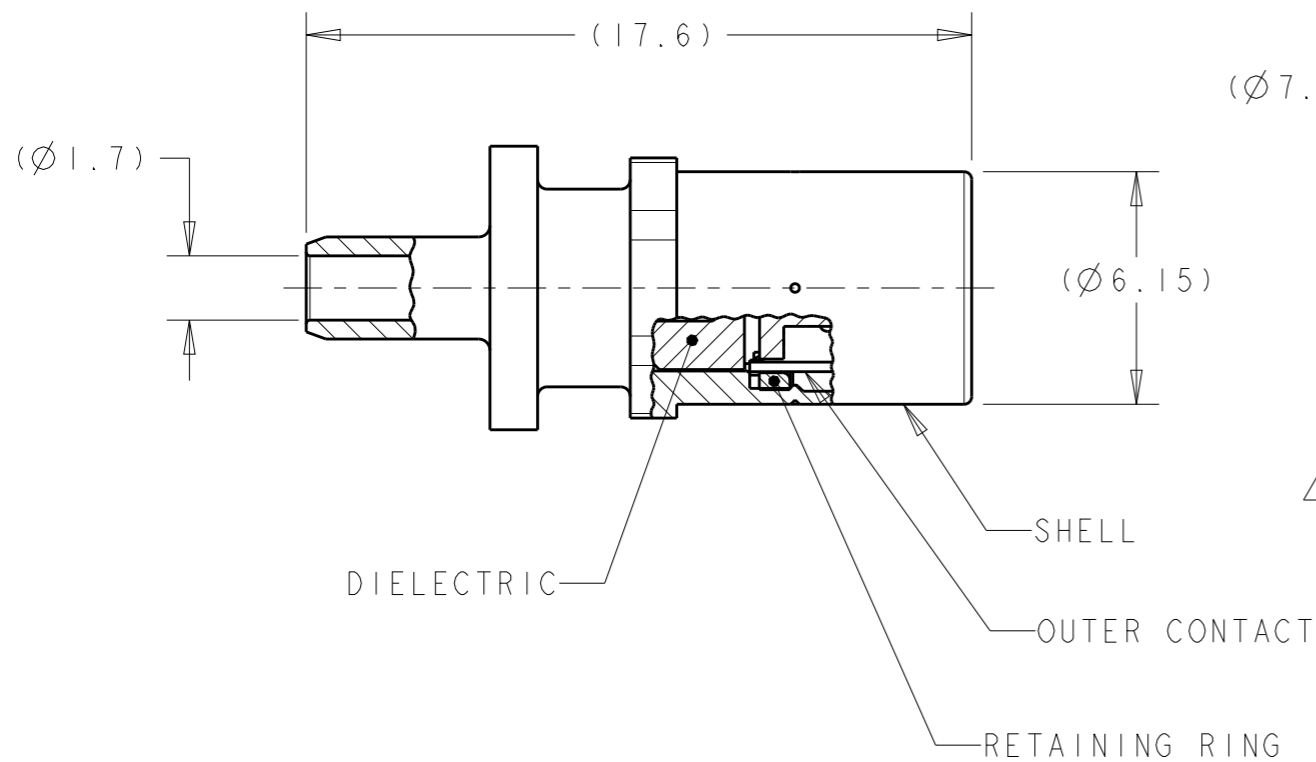


THIS DRAWING IS UNPUBLISHED. RELEASED FOR PUBLICATION 20
 © COPYRIGHT 20 BY - ALL RIGHTS RESERVED.

LOC	DIST	REVISIONS					
		P	LTR	DESCRIPTION	DATE	DWN	APVD
IN	00		A1	ECO-14-002553	21FEB2014	KP	LV



ISOMETRIC VIEW



- 1 SHELL: ZINC.
OUTER CONTACT: COPPER.
RETAINING RING: BRASS.
DIELECTRIC: POLYESTER PBT, NATURAL.
- 2 SHELL: 2.0µm MIN TIN OVER 1.0µm MIN NICKEL, BOTH OVER 5.08µm MIN COPPER.
OUTER CONTACT: 3.75µm MIN TIN OVER 1.27µm MIN NICKEL.
RETAINING RING: 2.03µm MIN TIN OVER 1.27µm MIN NICKEL.
- 3 PLUG SUBASSEMBLY ACCEPTS JACK SUBASSEMBLIES MEETING DIN 72594-1, ROAD VEHICLES - RADIO FREQUENCY INTERFACE - DIMENSIONS AND ELECTRICAL REQUIREMENTS.
- 4. SEE INSTRUCTION SHEET 408-10028.

1924937-1
PART NUMBER

THIS DRAWING IS A CONTROLLED DOCUMENT.		DWN K. PETERSON 13FEB2012	TE Connectivity	
DIMENSIONS: mm		CHK L. VARSIK 13FEB2012		
TOLERANCES UNLESS OTHERWISE SPECIFIED:		APVD L. VARSIK 13FEB2012	NAME PLUG SUBASSEMBLY, RG-316 OR RG-174, SMB	
0 PLC ±- 1 PLC ±- 2 PLC ±- 3 PLC ±- 4 PLC ±- ANGLES ±-		PRODUCT SPEC -	RESTRICTED TO -	
MATERIAL - 1	FINISH - 2	APPLICATION SPEC 114-13157	SIZE A3	CAGE CODE 00779
		WEIGHT -	DRAWING NO 1924937	
		CUSTOMER DRAWING	SCALE 5:1	SHEET 1 OF 1
			REV A1	