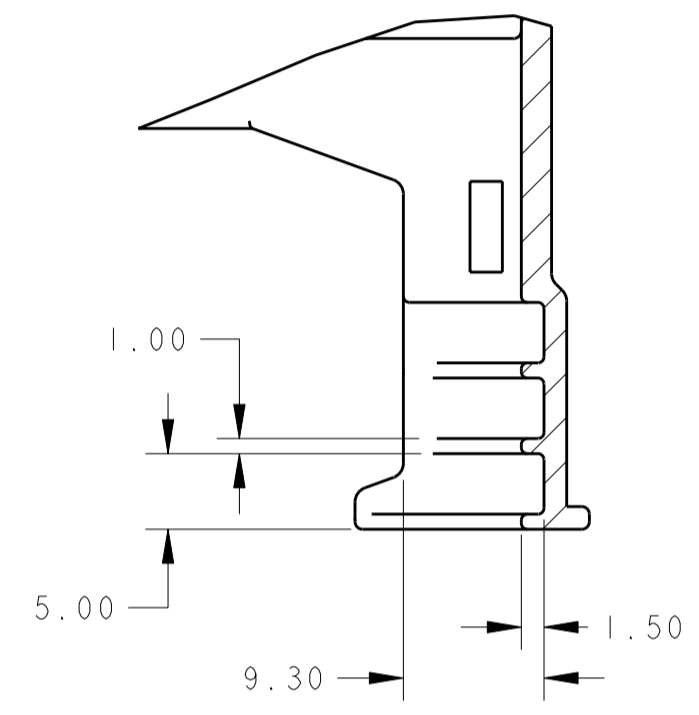
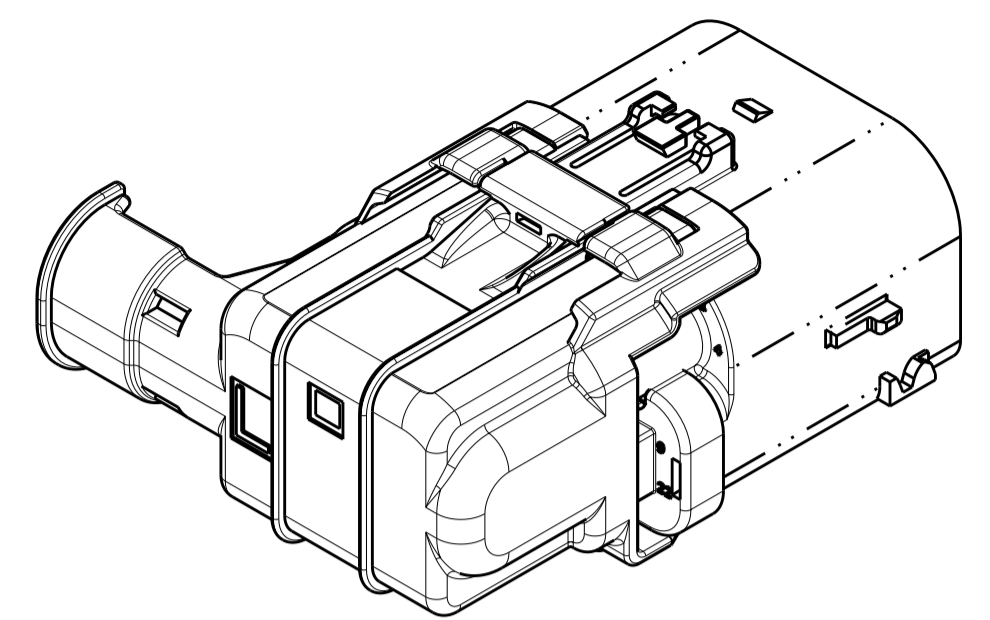
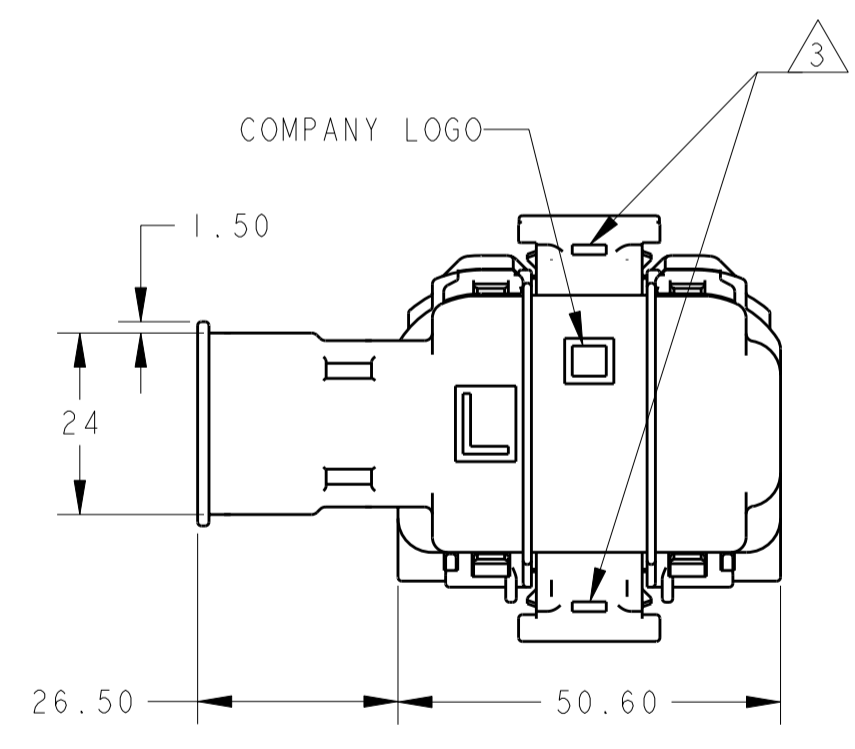
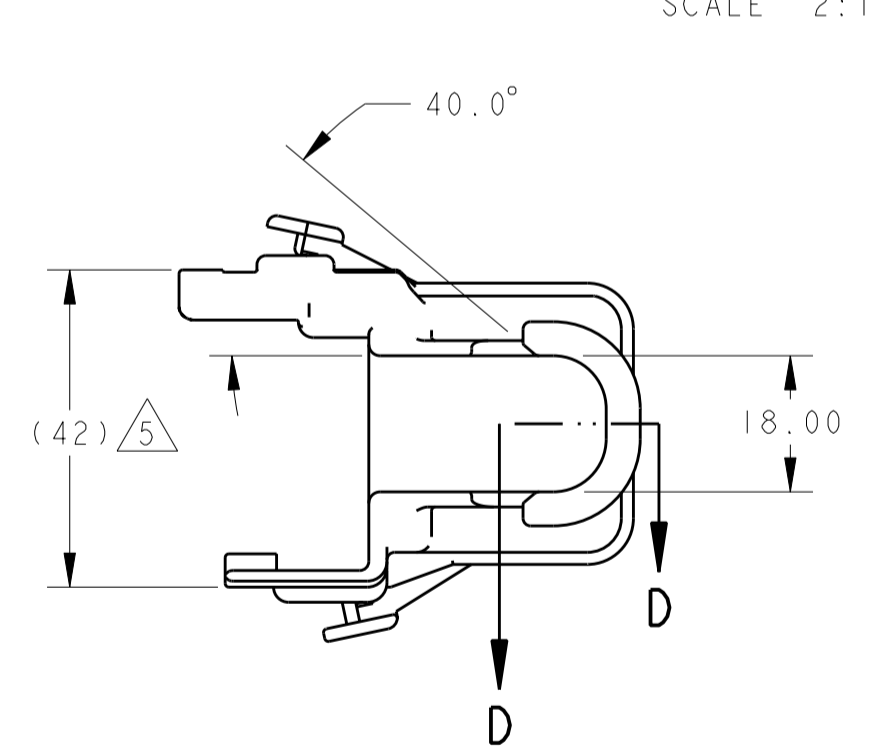
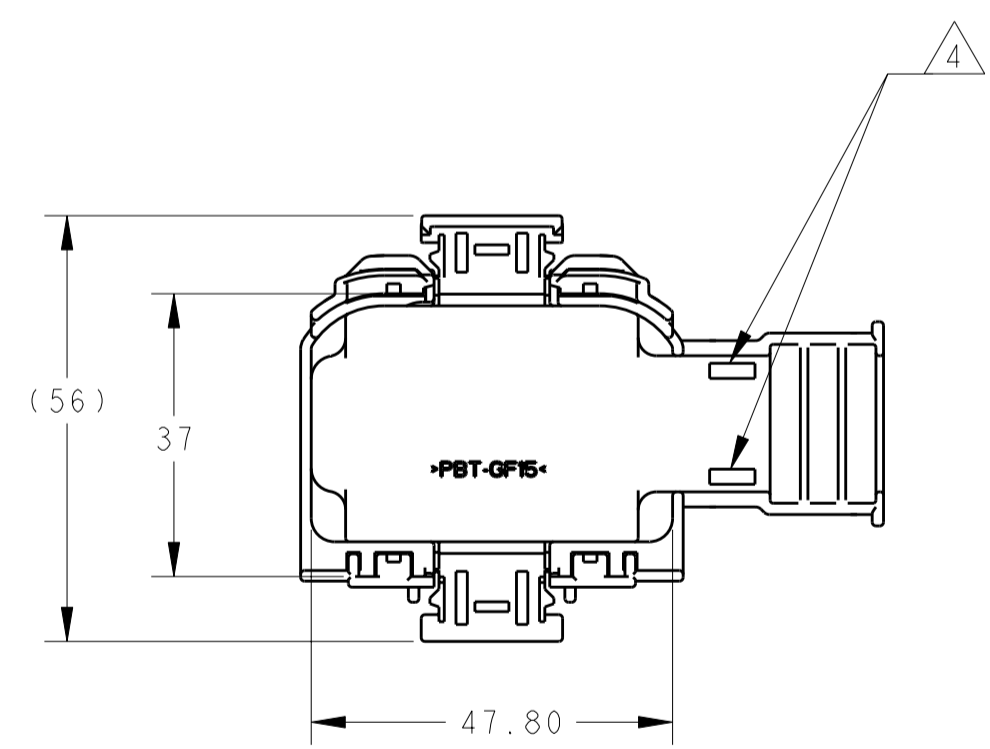


THIS DRAWING IS UNPUBLISHED. RELEASED FOR PUBLICATION
 © COPYRIGHT copyright_date BY TYCO ELECTRONICS CORPORATION. ALL INTERNATIONAL RIGHTS RESERVED.

LOC	DIST	REVISIONS			
P	LTR	DESCRIPTION	DATE	DWN	APVD
	A	RELEASED PER ECR 07-006597	22MAR2007	MHB	MHB
	AI	REVISED PER ECO-10-014244	08JUL2010	DL D	DL D



SECTION D-D
SCALE 2:1



- THIS WIRE GUIDE USED WITH 34 WAY MALE CAP ASSEMBLY SEE TYCO ELECTRONICS DRAWING 1587042. (PURCHASED SEPARATELY)
- FEATURE DESIGNED TO ACCOMMODATE PLASTIC CONVOLUTE.
- FEATURE TO ACCOMMODATE STRAIGHT SLOT SCREW DRIVER AS A PRY POINT.
- FEATURE TO ACCOMMODATE WIRE TIE.
- MEASURED AT TANGENT AS SHROUD WILL BOW IN.

6. THIS COMPONENT DESIGNED TO SATISFY THE REQUIREMENTS OF USCAR-2, REVISION 4 AS NOTED BELOW:

PARA 5.4.5 MISC COMPONENT ENGAGE/DISENGAGE FORCE
 60N MAX ENGAGE
 110N MIN REMOVE (STRAIGHT AXIAL PULL)

PARA 5.4.8 CONNECTOR DROP TEST.

AS SHOWN	1924002-1
DESCRIPTION	PART NUMBER

THIS DRAWING IS A CONTROLLED DOCUMENT FOR TYCO ELECTRONICS CORPORATION IT IS SUBJECT TO CHANGE AND THE CONTROLLING ENGINEERING ORGANIZATION SHOULD BE CONTACTED FOR THE LATEST REVISION.		DWN J. SHUEY 17AUG2006	Tyco Electronics HARRISBURG, PA 17105-3608
DIMENSIONS: mm		CHK E. KINSEY 05FEB2007	
TOLERANCES UNLESS OTHERWISE SPECIFIED:		APVD E. KINSEY 05FEB2007	
0 PLC ±1 1 PLC ±0.5 2 PLC ±0.20 3 PLC ± 4 PLC ± ANGLES ±3° FINISH		PRODUCT SPEC -	NAME WIRE DRESS, 34 POSITION, CAP, LEFT WIRE EXIT
MATERIAL PBT-GF15	BLACK	APPLICATION SPEC -	RESTRICTED TO -
		WEIGHT 25.8 g	SIZE A2 CAGE CODE 00779 DRAWING NO C-1924002
		CUSTOMER DRAWING	SCALE SHEET OF REV AI