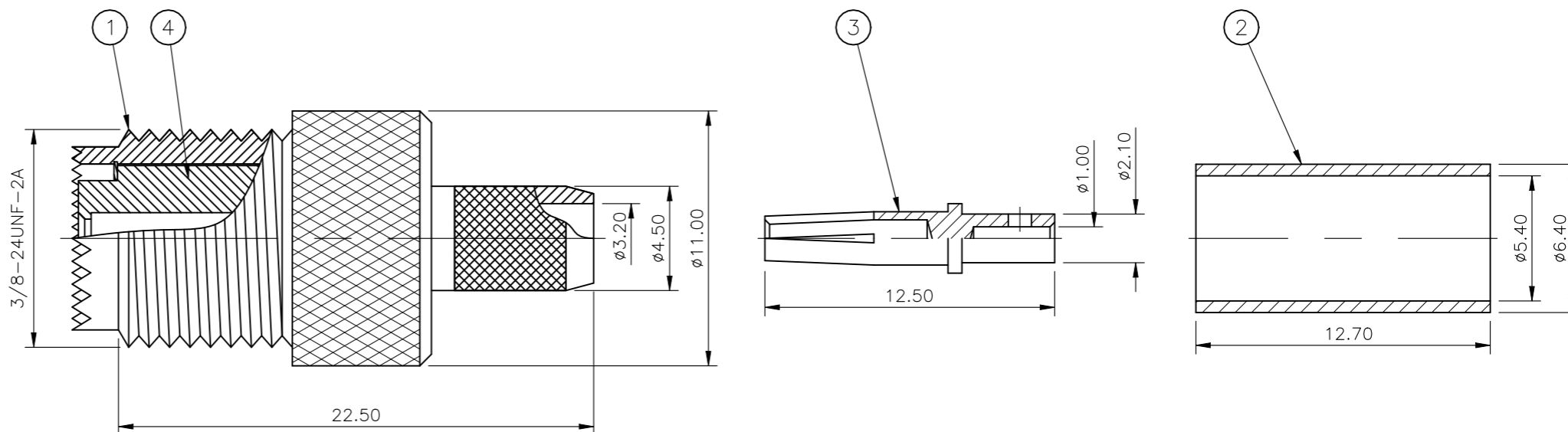


REVISIONS

| P | LTR | DESCRIPTION | DATE | DWN | APVD |
|---|-----|---------------------------|-----------|-----|------|
| | C1 | REVISED PER ECN-22-146347 | 05APR2022 | RZ | WK |

NOTES

- 1 SINGLE PACK IN ACCORDANCE WITH AMP SPEC 107-3275
- 2 100 PER BOX ACCORDANCE WITH AMP SPEC 107-3275
- 3 NICKEL PLATING
- 4 GOLD PLATING
- 5. FOR TECHNICAL DATA REFER TO YOUR LOCAL TYCO ELECTRONICS SALES OFFICE
- 6. ALL DIMENSIONS ARE NOMINAL FOR REFERENCE ONLY UNLESS OTHERWISE STATED



| QTY | PLC | DESCRIPTION | MATERIAL | DESCRIPTION | ITEM |
|-----|-----|-------------|----------|-------------|-------------|
| 1 | 1 | POM | | INSULATOR | 4 |
| 1 | 1 | BRASS | 4 | CONTACT | 3 |
| 1 | 1 | ZINC ALLOY | 3 | FERRULE | 2 |
| 1 | 1 | BRASS | 3 | BODY | 1 |
| 5 | 5 | | | MATERIAL | DESCRIPTION |
| | | | | | ITEM |

| | | | | |
|--|--|---|---------------------------------|--|
| THIS DRAWING IS A CONTROLLED DOCUMENT. | | DWN ANSON MA 14FEB09 | STE TE Connectivity Ltd. | |
| DIMENSIONS: mm | | CHK RITA ZUO 14FEB09 | | |
| TOLERANCES UNLESS OTHERWISE SPECIFIED: | | APVD BOB ZHAO 14FEB09 | NAME | |
| 0 PLC ± - | | M-UHF STR JK HEX | | |
| 1 PLC ± 0.3 | | RG58C/U, 141A/U, URM43, 76 | | |
| 2 PLC ± 0.2 | | - | | |
| 3 PLC ± - | | SIZE CAGE CODE DRAWING NO RESTRICTED TO | | |
| 4 PLC ± - | | A3 00779 C-1814819 | | |
| ANGLES ± - | | SCALE NTS SHEET 1 OF 2 REV C1 | | |
| FINISH ± - | | CUSTOMER DRAWING | | |
| MATERIAL SEE TABLE | | FINISH SEE TABLE | | |

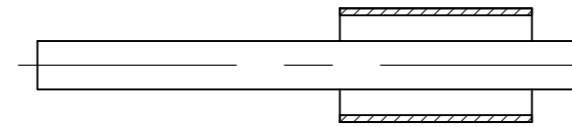
REVISIONS

| P | LTR | DESCRIPTION | DATE | DWN | APVD |
|---|-----|-------------|------|-----|------|
| | - | SEE SHEET 1 | - | - | - |

ASSEMBLY INSTRUCTION
RG58C/U, 141A/U, URM43, 76, KX15

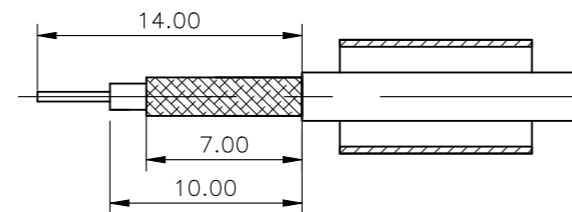
STEP 1

1. SLIDE METAL CRIMP FERRULE OVER CABLE



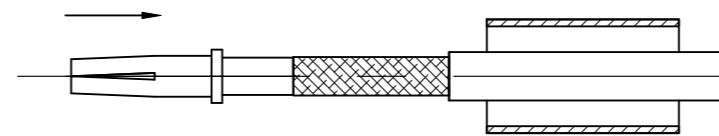
STEP 2

1. STRIP CABLE TO DIMENSIONS AS SHOWN

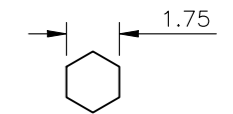


STEP 3

1. FIT CONTACT OVER CENTRE CONDUCTOR TO BUTT AGAINST DIELECTRIC.
2. CRIMP USING TOOL AS NOTES ON PAGE 1.

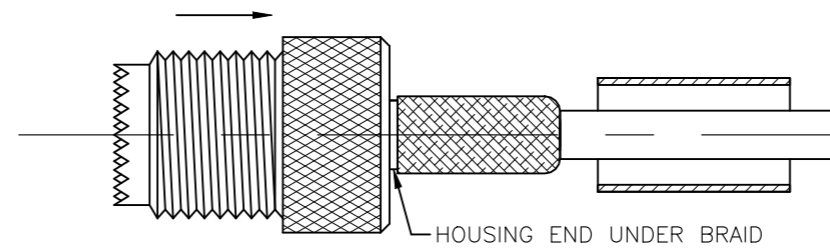


RECOMMENDED CENTRE CONTACT
A/F HEX



STEP 4

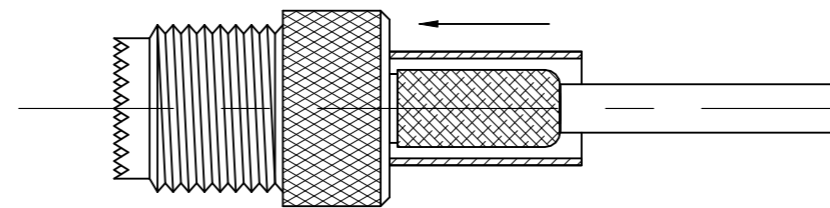
1. PRESS SUB-ASSEMBLY INTO BODY, UNTIL CONTACT IS FULLY LOCATED BY AN AUDIBLE CLICK.
2. ENSURE THAT KNURLED HOUSING INSERTS BETWEEN THE DIELECTRIC AND CABLE BRAID.



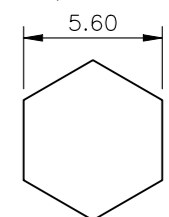
HOUSING END UNDER BRAID

STEP 5

1. SLIDE CRIMP FERRULE ALONG THE CABLE UNTIL IT BUTTS AGAINST THE HOUSING BODY.
2. CRIMP USING TOOL AS NOTED ON PAGE 1.
3. CRIMP DIMENSION AS SHOWN.

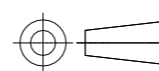


RECOMMENDED CRIMP SLEEVE
A/F HEX



THIS DRAWING IS A CONTROLLED DOCUMENT.

DIMENSIONS:
mm



TOLERANCES UNLESS OTHERWISE SPECIFIED:

| | |
|--------|-----|
| 0 PLC | ± - |
| 1 PLC | ± - |
| 2 PLC | ± - |
| 3 PLC | ± - |
| 4 PLC | ± - |
| ANGLES | ± - |
| FINISH | ± - |

MATERIAL
SEE TABLE

FINISH
SEE TABLE

DWN ANSON 14FEB09

CHK RITA ZUO 14FEB09

APVD BOB ZHAO 14FEB09

PRODUCT SPEC

108-112000

APPLICATION SPEC

SHEET 2

WEIGHT -

CUSTOMER DRAWING



NAME
M-UHF STR JK HEX
RG58C/U, 141A/U, URM43, 76, KX15

| | | | |
|------|-----------|------------|---------------|
| SIZE | CAGE CODE | DRAWING NO | RESTRICTED TO |
| A3 | 00779 | C-1814819 | - |

| | | |
|-------|--------|-----|
| SCALE | SHEET | REV |
| NTS | 2 OF 2 | C1 |