

THIS DRAWING IS UNPUBLISHED.

RELEASED FOR PUBLICATION

ALL RIGHTS RESERVED.

© COPYRIGHT - By -

REVISIONS

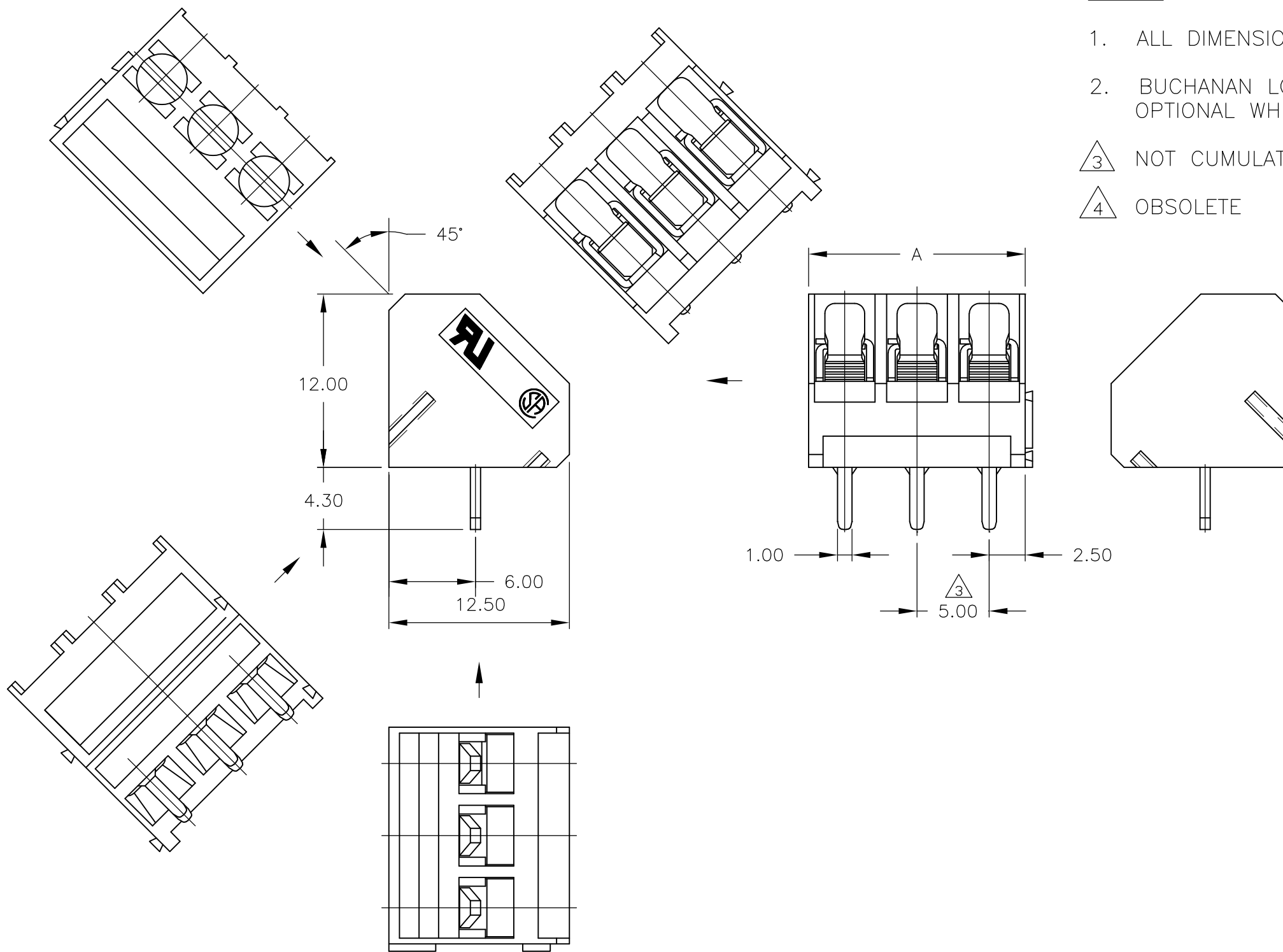
P	LTR	DESCRIPTION	DATE	DWN	APVD
	P1	PCB LAYOUT ADDED HIGH TEMP PHRASE REMOVED	03AUG16	FP	NG

NOTES:

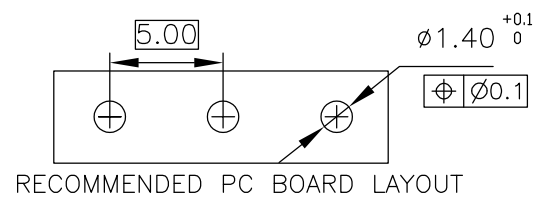
1. ALL DIMENSIONS ARE IN mm.
2. BUCHANAN LOGO TO APPEAR ON HOUSING LOCATION OPTIONAL WHERE SPACE PERMITS.

△3 NOT CUMULATIVE

△4 OBSOLETE



△4	120.00	24	2-1776252-4
△4	115.00	23	2-1776252-3
△4	110.00	22	2-1776252-2
△4	105.00	21	2-1776252-1
△4	100.00	20	2-1776252-0
△4	95.00	19	1-1776252-9
△4	90.00	18	1-1776252-8
△4	85.00	17	1-1776252-7
△4	80.00	16	1-1776252-6
△4	75.00	15	1-1776252-5
△4	70.00	14	1-1776252-4
△4	65.00	13	1-1776252-3
△4	60.00	12	1-1776252-2
△4	55.00	11	1-1776252-1
△4	50.00	10	1-1776252-0
△4	45.00	9	1776252-9
△4	40.00	8	1776252-8
△4	35.00	7	1776252-7
△4	30.00	6	1776252-6
△4	25.00	5	1776252-5
△4	20.00	4	1776252-4
△4	15.00	3	1776252-3
△4	10.00	2	1776252-2
△4	DIM. A	NO. OF POS.	PART NUMBER



RECOMMENDED PC BOARD LAYOUT

THIS DRAWING IS A CONTROLLED DOCUMENT.		DWN S SCHLEGEL 5/5/05	TE Connectivity TERMINAL BLOCK 45 DEGREE WIRE INLET W/ INTERLOCK, 5.0mm PITCH					
DIMENSIONS: mm		CHK C RICHARD 5/5/05				NAME		
TOLERANCES UNLESS OTHERWISE SPECIFIED:		APVD C RICHARD 5/5/05				SIZE CAGE CODE DRAWING NO RESTRICTED TO		
0 PLC ± - 1 PLC ± 0.3 2 PLC ± 0.25 3 PLC ± - 4 PLC ± - ANGLES ± -		PRODUCT SPEC				A3 00779 C-1776252		
MATERIAL		FINISH	APPLICATION SPEC					
-		-	WEIGHT 0					
CUSTOMER DRAWING			SCALE NTS	SHEET 1 of 2	REV P1			

THIS DRAWING IS UNPUBLISHED.

RELEASED FOR PUBLICATION

ALL RIGHTS RESERVED.

© COPYRIGHT - By -

REVISIONS

P	LTR	DESCRIPTION	DATE	DWN	APVD
-	-	SEE SHEET 1	-	-	-

1. Application and Features:

- 1-1. This series of terminal block has a built-in self lift wire guard clamp to protect against wire pinching.
- 1-2. Standard sizes are 2 and 3 way-blocks, but every number of contact can be combined, by simply plugging them together and can be ordered as required**
- 1-3. Since the wire inlet and the screw are in a 45° position, these terminal blocks are designed specifically to solve poor accessibility problems.—

2-2. Electrical:

- 2-2-1. Current rating: 10 Amps max.
- 2-2-2. Contact resistance: 20m Ω (Max).
- 2-2-3. Insulation resistance: 5000MΩ /1000V.
- 2-2-4. Withstanding Voltage: 1500VAC (1min).
test time =60sec/1pcs
- 2-2-5. Operation Voltage: 300V AC/DC.
- 2-2-6. Wire Range: 14-22 AWG.

2. Technical Data:

2-1. Material:

- 2-1-1. HOUSING: PA 6,6 UL 94 V-0 (Blue).
- 2-1-2. Contact: Brass(Cu Zn), Tin plated.
- 2-1-3. Screw: Steel galvanized and chromitized, M2.6

2-3. Mechanical:

- 2-3-1. Torque: 4 Kg.cm (Max).
- 2-3-2. Operating temperature: -55°C to +105°C.
- 2-3-3. Solderability: 95% coverage (min).
test temperature=230°C±10°C
test time= 3sec ± 0.5sec.

THIS DRAWING IS A CONTROLLED DOCUMENT.		DWN S SCHLEGEL	5/5/05	STE TE Connectivity		
DIMENSIONS: mm		CHK C RICHARD	5/5/05			
TOLERANCES UNLESS OTHERWISE SPECIFIED:		APVD C RICHARD	5/5/05	NAME TERMINAL BLOCK 45 DEGREE WIRE INLET W/ INTERLOCK, 5.0mm PITCH		
0 PLC ± -		PRODUCT SPEC		-		
1 PLC ± 0.3		APPLICATION SPEC		-		
2 PLC ± 0.25		WEIGHT		-		
3 PLC ± -		SIZE		A3		
4 PLC ± -		CAGE CODE		00779		
ANGLES ± -		DRAWING NO		C-1776252		
FINISH		RESTRICTED TO		-		
MATERIAL		CUSTOMER DRAWING		SCALE		NTS
-		SHEET		2 OF 2		REV P1