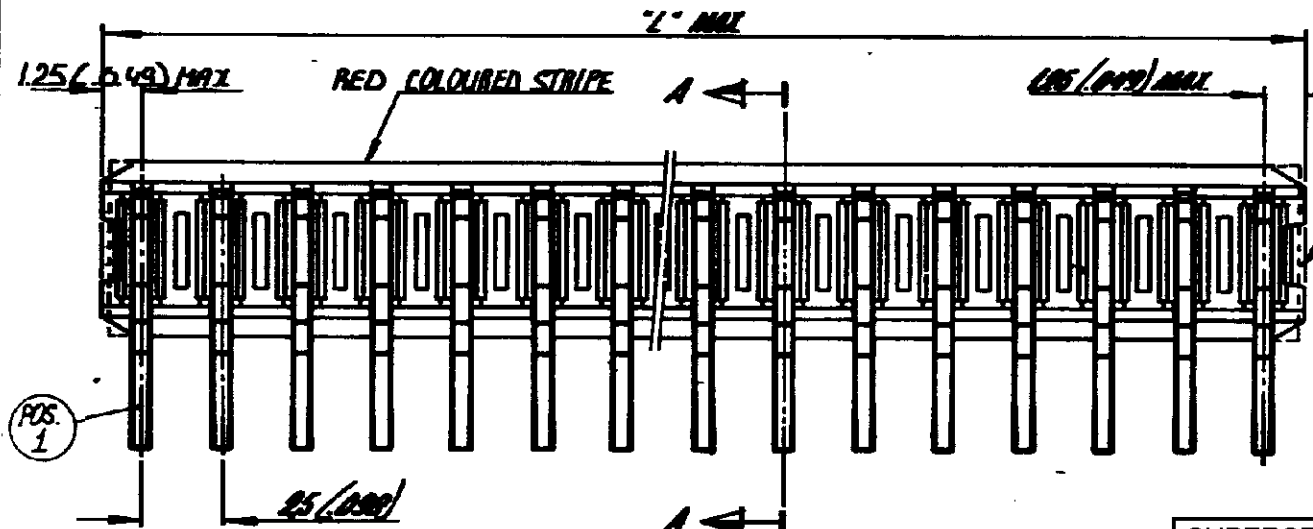
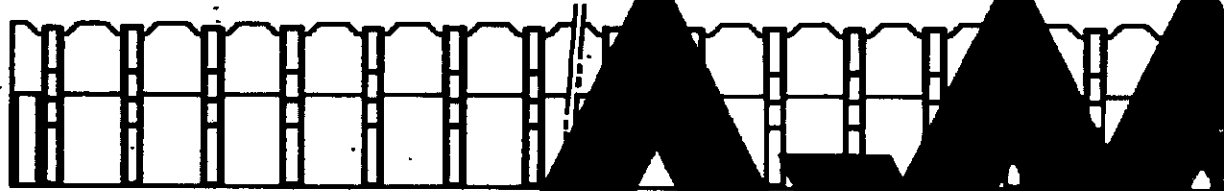


DRAWING MADE IN AMERICAN PROJECTION



OPTIONAL (2x)

POS. 1



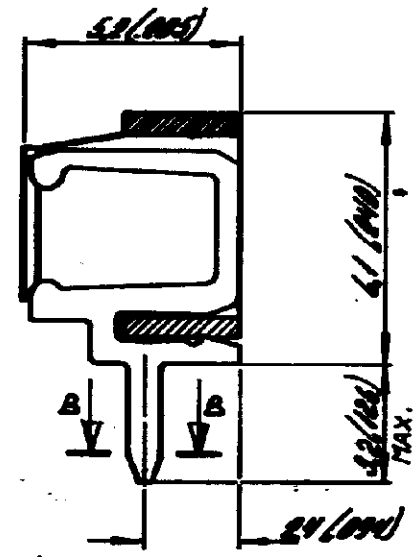
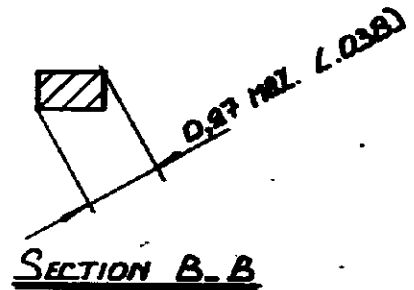
AMP

SUPERSEDED BY 1-5161800-2

ORDER NUMBER	NUMBER OF POSITIONS	"L" MAX.		
		M.M.	INCH.	
161800-2	2	5.0	.197	
-3	3	7.5	.296	△
-4	4	10.0	.394	△
-5	5	12.5	.493	△
-6	6	15.0	.591	△
-7	7	17.5	.690	
-8	8	20.0	.788	
-9	9	22.5	.886	OBSOLETE
-10	10	25.0	.985	
-11	11	27.5	1.083	
-12	12	30.0	1.182	
-13	13	32.5	1.280	△
-14	14	35.0	1.378	OBSOLETE
-15	15	37.5	1.477	△
-16	16	40.0	1.575	△
-17	17	42.5	1.674	△
-18	18	45.0	1.772	△
-19	19	47.5	1.871	△
2-161800-20	20	50.0	1.969	
2-161800-21	21	52.5	2.067	△

MATERIAL: HOUSING: P.B.T., 20% GLASS FILLED
CONTACT: PH. BR., TIN-LEAD (93/7) PLATED

△ OBSOLETE PARTS: OBSOLETE CIS STREAMLINING PER D.RENAUD/D.SINISI



H1	ECO-09-025273	16NOV09	KK	AEG
LTR	REVISION	DATE	DR	APVD

SEE TABLE	SEE ABOVE	SEE ABOVE
ORDER NO.	MATERIAL	PLATING
CUSTOMER COPY FOR REFERENCE ONLY		
DR PVT	DATE 17-4-81	©1977 BY AMP-HOLLAND N.V. ALL RIGHTS RESERVED AMP PRODUCTS COVERED BY PATENTS AND/OR PATENTS PENDING.
CWK	DATE	
DR	DATE	AMP-HOLLAND N.V. 's-Hertogenbosch
DR	DATE	
SCALE 1:2	SIZE B	NO C-161800
NAME: IN FULL FEMALE BOARD TO BOARD CONNECTOR ASSY FOR MINI MAIN INTERCONNECTION SYSTEM. P/N: 2.5 AMP.		

DIMENSIONS IN P.H. DO NOT SCALE PRINT DIMENSIONS MUST BE IN INCHES

AMP 1280-01