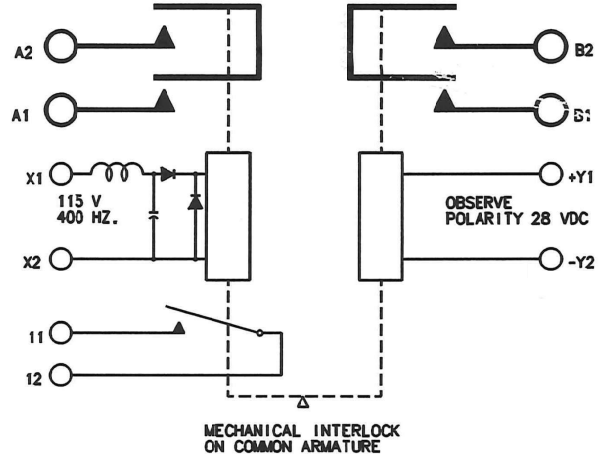
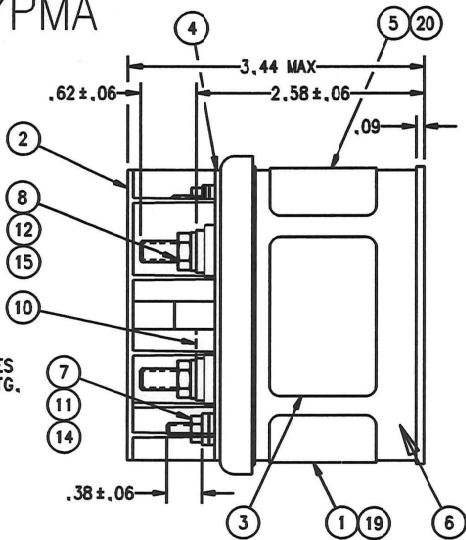
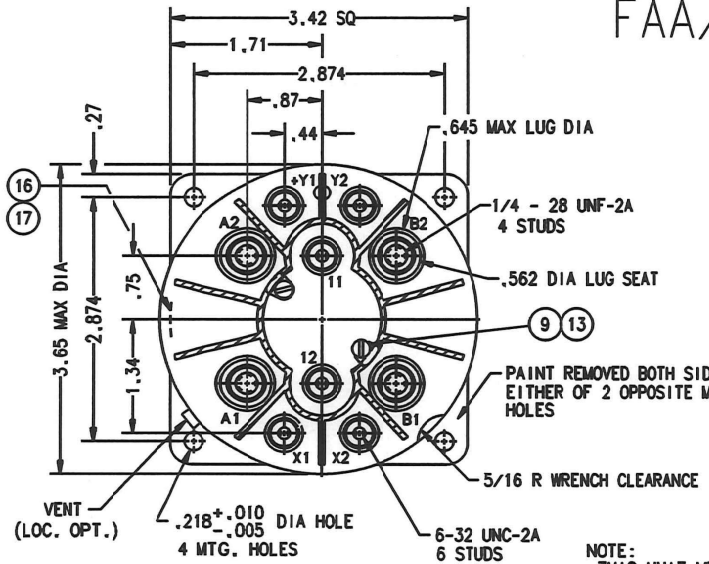


FAA/PMA

REVISIONS		RELEASED	
REV.	DESCRIPTION	DATE	APPROVED
N 33868	FIND NO 18 39529-005 REMOVED	97/10/06	RS
P 0276-02	UPDATED TOP VIEW AT +Y, -Y TERMINALS	02/05/03	cc



NOTE:
THIS UNIT MEETS THE MATERIALS AND WORKMANSHIP REQUIREMENTS OF MIL-R-6106.

CONSTRUCTION

METALLIC BASE
GASKET SEALED, VENTED

MAIN CONTACTS

CONFIGURATION
VOLTAGE NOMINAL
CURRENT - RESISTIVE
INDUCTIVE
MOTOR
OVERLOAD
RUPTURE

SPDT CENTER OFF - DOUBLE BREAK
28 VDC
100 AMP
100 AMP
80 AMP
800 AMP
1000 AMP

AUXILIARY CONTACTS

CONFIGURATION
VOLTAGE NOMINAL
CURRENT - RESISTIVE
INDUCTIVE
LAMP

SPST N.O.
115 VAC 400 HZ OR 28 VDC
3 AMP 3 AMP
3 AMP 3 AMP
1 AMP 1 AMP

LIFE ELECTRICAL
LIFE MECHANICAL

50,000 CYCLES MIN.
100,000 CYCLES MIN.

COIL DATA - X COIL

DUTY CYCLE
NOM. OPERATE VOLTAGE
PICKUP MAX INITIAL
DROPOUT
COIL RESISTANCE AT 25°C
COIL CURRENT AT 25°C

CONTINUOUS
115 VAC 400 HZ
75 VAC 400 HZ AT 25°C
12 V TO 38 V AT 25°C
655 OHMS ±20%
.050 AMP DC AV AT 115 VAC 400 HZ

COIL DATA - Y COIL

DUTY CYCLE
NOM. OPERATE VOLTAGE
PICKUP MAX INITIAL
DROPOUT VOLTAGE
COIL RESISTANCE AT 25°C
COIL CURRENT AT 25°C

CONTINUOUS
28 VDC
15 VDC AT 25°C
2.0 V TO 6.5 V AT 25°C
163 OHMS ±20%
.215 AMP MAX AT 28 VDC

ENVIRONMENTAL DATA

AMBIENT TEMPERATURE
ALTITUDE
SHOCK
VIBRATION
ACCELERATION
WEIGHT MAX

-55°C TO +71°C
50,000 FT MAX
15G 11MS±1
0.036 DA 10 TO 52 HZ
5G 52 TO 500 HZ
10 G
1 LB 15 OZ

20	1	39529-023	OVERLAY			
19	1	39529-009	OVERLAY			
18						
17	1	39529-024	OVERLAY			
16	1	58400-096	PLATE - FAA/PMA			
15	4	51807-041	WASHER - LOCK NO. 1/4 SPLIT			STEEL
14	6	51806-021	WASHER - LOCK NO. 6 SPLIT			STEEL
13	2	51805-011	WASHER - LOCK NO. 5 SPLIT			BRONZE
12	4	51703-081	WASHER 1/2 X 17/64 X 1/32 FLAT			STEEL
11	6	51702-211	WASHER 3/8 X 9/64 X 1/32 FLAT			STEEL
10	2	51701-180	WASHER - .015 X .103 X 3/16			MYLAR
9	2	51205-291	SCREW - 5-40 X 5/8 RD. HD.			BRASS
8	4	50407-391	NUT 1/4-28 X 3/8 X 3/16 HEX.			STEEL
7	6	50406-071	NUT 6-32 X 5/16 X 7/64 HEX.			STEEL
6	1	20074-150	CONTACTOR ASSEMBLY - PRIMARY			
5	1	20205-001	PLATE - WIRING DIAGRAM			
4	1	18337-007	PLATE BASE COVER			
3	1	17959-001	PLATE - WARNING			
2	1	17539-004	SHIELD - TERMINAL			
1	1	16043-058	PLATE - NAME			
FIND NO	QTY RECD	PART OR IDENTIFYING NO	NOMENCLATURE OR DESCRIPTION	FSCM NO	DRAWING OR SPECIFICATION	MATERIAL OR NOTE

DR BY CSC 02/08/12 CHK BY CS 02/08/14 ENGR CS 02/08/15 MFG JH 02/08/15		TYCO Electronics Hartman Division • 175 N. DIAMOND STREET • MANSFIELD, OHIO 44902	
		100 AMP., 28 VDC CONTACTOR - SPDT CENTER OFF 093	
2 PL DEC. 3 PL DEC. ANGLES ± .03 ± .010 ± 1°		SIZE C CODE IDENT 74063	DWG NO. D-31BAA REF TYCO P/N 0-1616097-1
		SCALE 1/1	SHEET