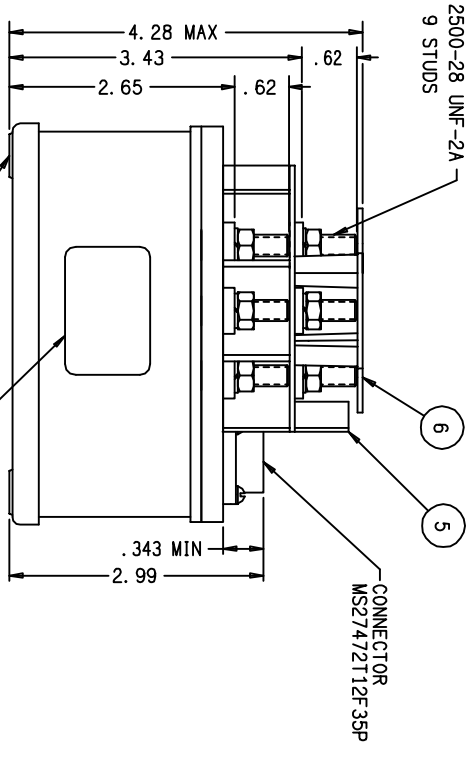
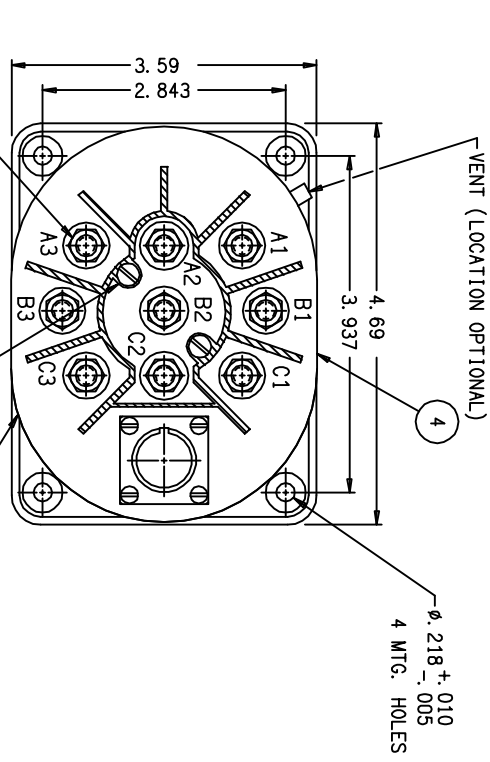
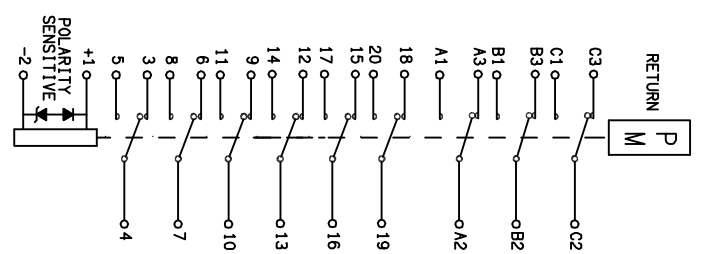


REV	DESCRIPTION	DATE	APPROVED
K 38541	PARTS LIST UPDATED	99/02/12	RS
L 43073	RELOCATED .62 DIM TO TOP OF TERMINAL	99/02/12	CC
M 09-0025474	ALIGN W/ GVI-CER-7218	09/06/02	DLM



FOUR MTG. HOLES SHALL BE PAINT FREE ON BOTH SIDES OF THE MOUNTING FLANGES FOR GROUNDING PURPOSES

CONFIGURATION MANAGED



CONSTRUCTION
 MAIN CONTACTS VOLTAGE (NOMINAL) 115/200 VAC 400HZ
 CURRENT RESISTIVE 60 AMPERES
 INDUCTIVE 60 AMPERES
 OVERLOAD (5 MIN) 75 AMPERES
 OVERLOAD (10 SEC) 175 AMPERES
 RUPTURE 600 AMPERES

AUX CONTACTS
 CONFIGURATION VOLTAGE (NOMINAL) 115/200 VAC 400/60 HZ
 CURRENT RESISTIVE 3 AMPERES
 INDUCTIVE 1 AMPERES
 LAMP LEVEL 10 MILLIAMPERES

COIL DATA
 DUTY CYCLE CONTINUOUS
 OPERATE VOLTAGE (MAX) 28 VDC
 OPERATE VOLTAGE (MIN) 18 VDC
 DROP-OUT VOLTAGE (MAX) 2-7 VDC
 HOLD VOLTAGE (MAX) 7 VDC
 COIL CURRENT (MAX) .40 AMPERES AT 20°C 28 VDC
 OPERATE TIMES AT 20°C 32 VDC
 AT -55°C 18 VDC
 PICKUP TIME 50 MS (MAX) 10 MS (MIN) AT 71°C
 TIMING (MAX) 25 MS (MAX) 40 MS (MAX) 100 MS (MAX)
 BOUNCE (MAX) 2 MILLISECONDS
 STAGGER TIME (MAX) 3 MILLISECONDS
 ENVIRONMENTAL ALTITUDE (MAX) 50,000 FEET
 LIFE ELECTRICAL (MIN) 50,000 CYCLES
 LIFE MECHANICAL (MIN) 100,000 CYCLES
 WEIGHT (MAX) 2.7 LBS

ENVIRONMENTAL
 ALTITUDE (MAX) 50,000 FEET
 LIFE ELECTRICAL (MIN) 50,000 CYCLES
 LIFE MECHANICAL (MIN) 100,000 CYCLES
 WEIGHT (MAX) 2.7 LBS

QTY	PART OR IDENTIFYING NO	DESCRIPTION	MATERIAL
2	51804-040	LOCKWASHER #4 SPLIT	S. STEEL
2	51204-721	SCREW #4-40 X 1.50 PAN HD.	STEEL
1	SA120B10	PRIMARY ASSEMBLY	
1	TS018001	TOP SHIELD	
1	TS017020	BOTTOM SHIELD ASS'Y	
1	WD016001	SCHEMATIC	
1	16043-001	NAMEPLATE	
2	51807-034	LOCKWASHER 1/4 SPLIT	BRONZE
1	50407-074	NUT 1/4-28 X 3/8 X 3/16	BRASS

UNLESS OTHERWISE SPECIFIED DIMENSIONS ARE IN INCHES TOLERANCES IN		GULFSTREAM	
F. 06	±.010	F. 5°	
2 PL. DEC. 13 PL. DEC. ANGLES		DR BY CSC100/09/12	
MATERIAL		CHK BY CC 100/09/14	
		ENGR MRP 100/09/14	
		MFG MES100/09/15	
		SIZE CODE IDENT	
		A 74063	
		SCALE 1/2 SHEET	

Tyco Electronics
 1800 Hotchkiss Blvd., Suite 1175 N. Diamond Street Mansfield, OH 44902

CONTACTOR, 3PDT
 60 AMP, 28 VDC COIL
 GASKET SEALED

DWG NO. SA120B
 REF TE P/N 1616042-3