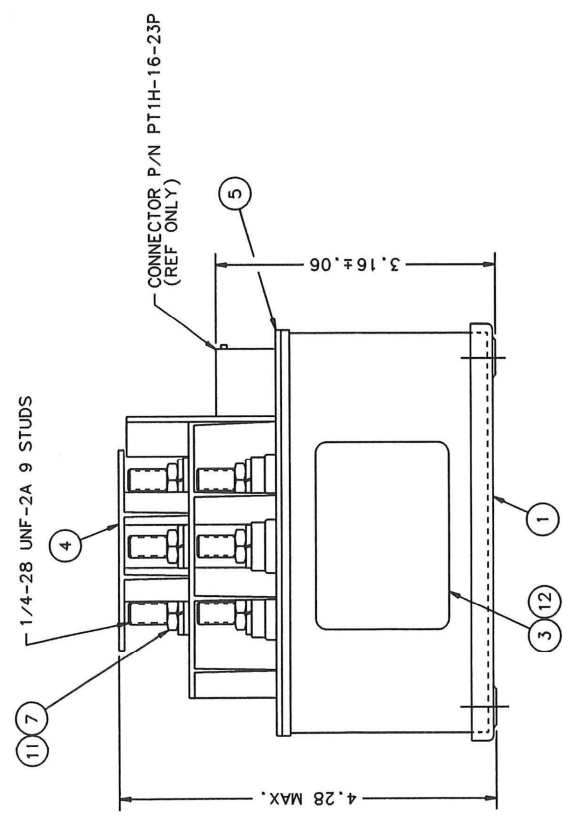
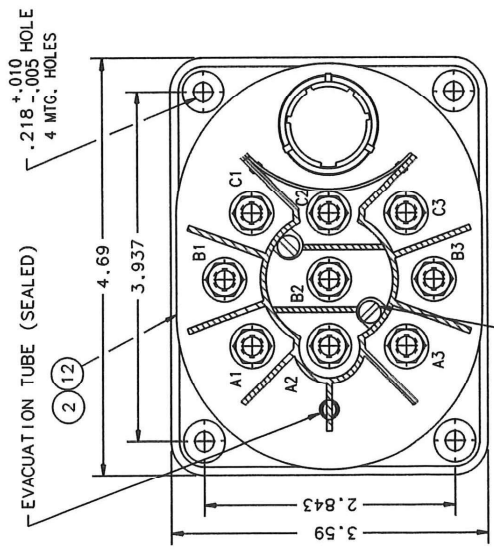


REV. 1		DH-25BA	
REVISIONS		RELEASED	DATE
REV.	DESCRIPTION	DATE	APPROVED
L	34873 REDRAWN, F IND NO 12 ADDED	98/02/12	RS

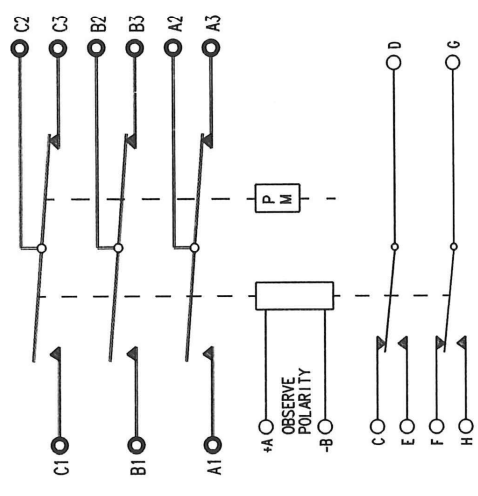


CONSTRUCTION
 MAIN CONTACTS
 NOMINAL CONTACT VOLTAGE
 CONFIGURATION
 CURRENT RESISTIVE
 INDUCTIVE

AUX CONTACT CONFIGURATION
 RATING

NOMINAL COIL VOLTAGE
 PICKUP VOLTAGE
 DROPOUT VOLTAGE

TEMPERATURE RANGE
 MIN OPERATING CYCLES
 MAX WEIGHT, EST



FIND NO	QTY	PART OR IDENTIFYING NO	NOMENCLATURE OR DESCRIPTION	FSCM NO	DRAWING OR SPECIFICATION	MATERIAL OR NOTE
12	2	39529-001	OVERLAY			
11	9	51807-034	WASHER-LOCK 1/4 SPLIT			BRONZE
10	2	51805-011	WASHER-#5 SPLIT, LOCK			BRONZE
9	2	51701-180	WASHER-.015 X .103 X 3/16			NYLAR
8	2	51205-411	SCREW-5-40 X 1.378 RD.HD.			STEEL
7	9	50407-074	NUT-1/4-28 X .375 X 3/16 HEX			BRASS
6	1	19689-010	TERMINAL SHIELD ASSEMBLY			
5	1	18345-003	PLATE-BASE COVER			
4	1	17540-001	SHIELD-TERMINAL TOP			
3	1	16043-001	PLATE - NAME			
2	1	27678-001	PLATE-WIRING DIAGRAM			
1	1	19959-020	CONTACTOR ASSEMBLY - PRIMARY			

UNLESS OTHERWISE SPECIFIED DIMENSIONS ARE IN INCHES TOLERANCES ON		HARTMAN ELECTRICAL MANUFACTURING MANSFIELD, OHIO	
2 PL DEC.13 PL DEC. ANGLES	DR BY RLS 98/04/01	CONTACTOR-3PDT NC	
± .03 ± .010 ± 1°	CHK BY RS 98/04/01	100 AMP, 400 HZ, 28 VDC COIL	
	ENGR DKO 98-4-14	SIZE	CODE IDENT DWG NO.
	MFG CC 9804108	C	74063
	RELEASE	SCALE	NONE
	CONTR NO.		DH-25BA
	GOVT APPVL		SHEET
			093