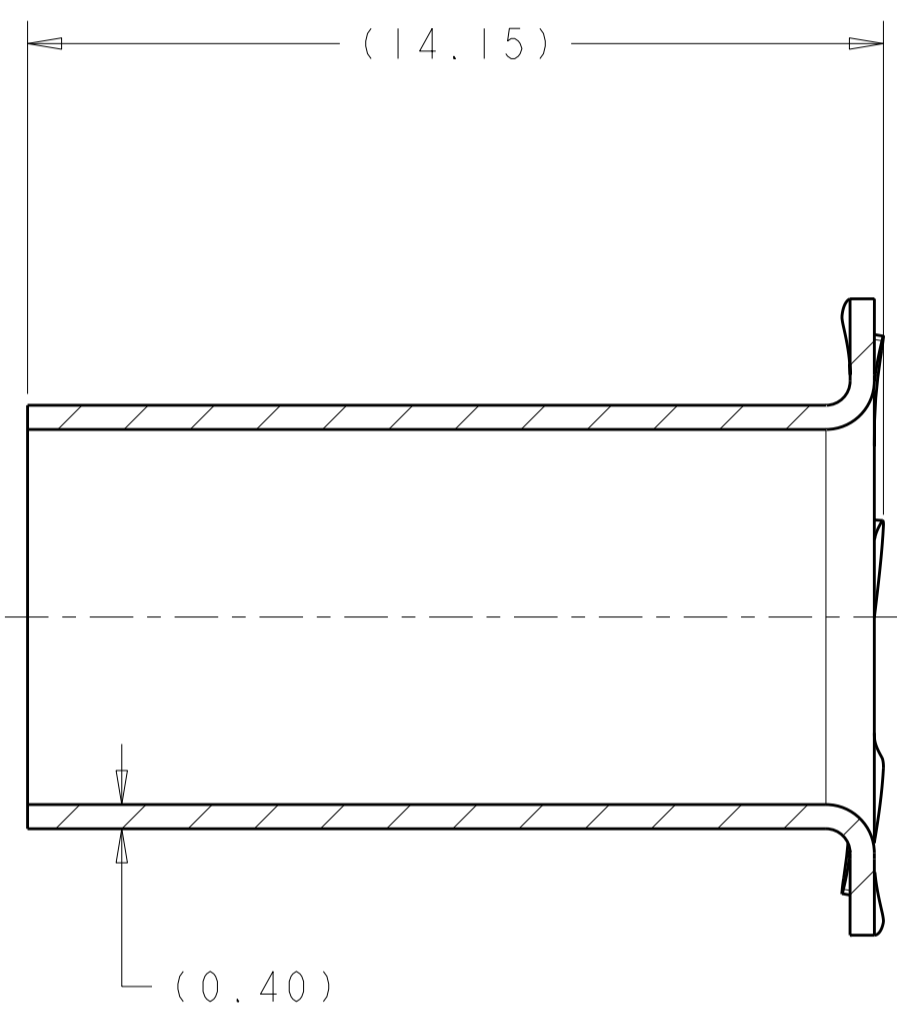
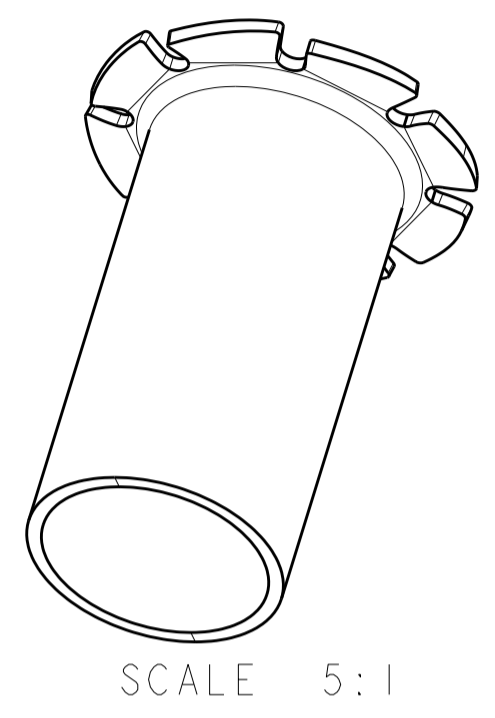
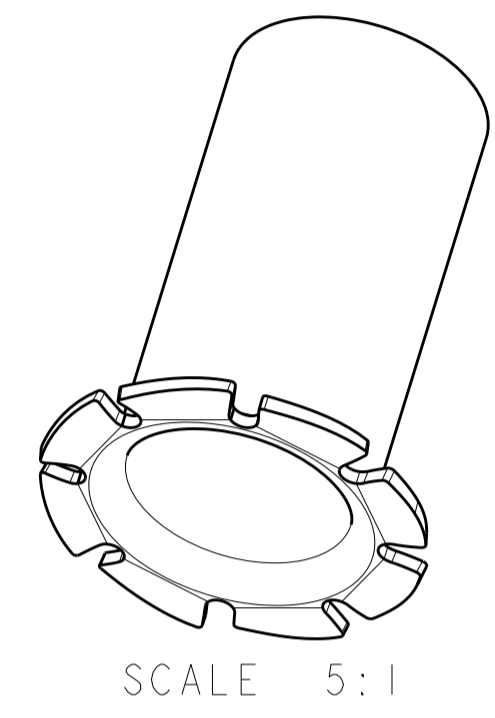
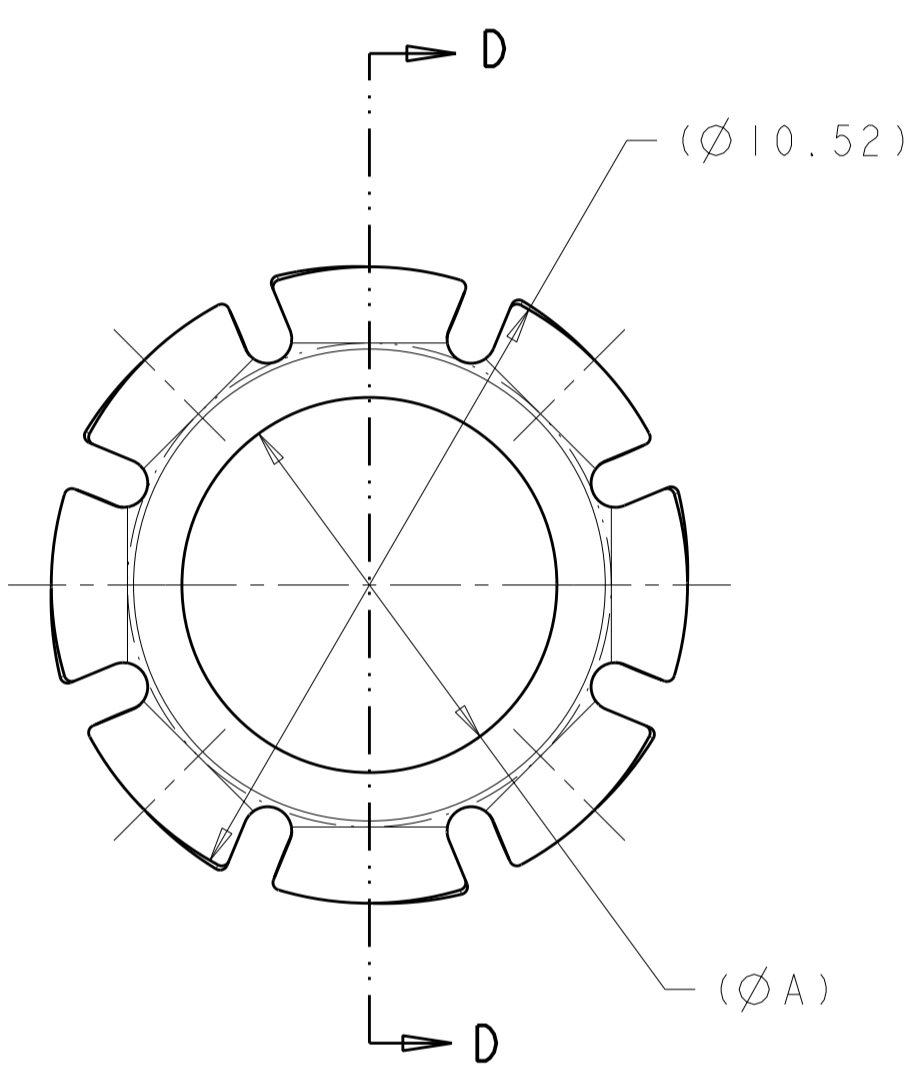


THIS DRAWING IS UNPUBLISHED. RELEASED FOR PUBLICATION 20  
 © COPYRIGHT 20 BY TYCO ELECTRONICS CORPORATION ALL RIGHTS RESERVED.

LOC	DIST	REVISIONS			
P	LTR	DESCRIPTION	DATE	DWN	APVD
	A	INITIAL DRAWING	04AUG2011	DS	YS



SECTION D-D



- 1 MATERIAL (DRAWN PART)  
TYPE: C19400
- 2 FINISH  
UNDER PLATE TYPE: NICKEL  
UNDER PLATE THICKNESS: 0.0005 - 0.0013  
  
TOP PLATE TYPE: TIN  
TOP PLATE THICKNESS: 0.0013 - 0.0025
- 3. PARTS MUST BE FREE OF EXCESSIVE BURRS, CRACKS OR OTHER VISUAL IMPERFECTIONS THAT MAY AFFECT FIT, FORM OR FUNCTION.
- 4. REFER TO INSTRUCTION SHEET 408-10258 FOR CRIMP TOOLING AND APPLICATION SPECIFICATION

5 PRELIMINARY PART — NOT RELEASED FOR PRODUCTION

5	-	-	-	APT OUTER FERRULE SIZE E	1587836-5
5	-	-	-	APT OUTER FERRULE SIZE D	1587836-4
5	-	-	-	APT OUTER FERRULE SIZE C	1587836-3
	6.20	1.22	3.00	APT OUTER FERRULE SIZE B	1587836-2
5	-	-	-	APT OUTER FERRULE SIZE A	1587836-1
	A	WT (gms)	WIRE SIZE (mm <sup>2</sup> )	DESCRIPTION	PART NO.

1587836-2 SHOWN

THIS DRAWING IS A CONTROLLED DOCUMENT.		DWN D. SIMPSON 04AUG2011	TE Connectivity	
DIMENSIONS: mm		CHK Y. SOONAVALA 04AUG2011		
TOLERANCES UNLESS OTHERWISE SPECIFIED:		APVD A. GUANCO 04AUG2011	NAME OUTER FERRULE, APT	
0 PLC ± 1 PLC ±0.1 2 PLC ±0.05 3 PLC ±0.001 4 PLC ±0.0001 ANGLES ±2 FINISH		PRODUCT SPEC -	SIZE A200779	DRAWING NO C-1587836
MATERIAL		APPLICATION SPEC -	WEIGHT SEE TABLE	RESTRICTED TO -
1		CUSTOMER DRAWING		SCALE 8:1 SHEET 1 OF 1 REV A