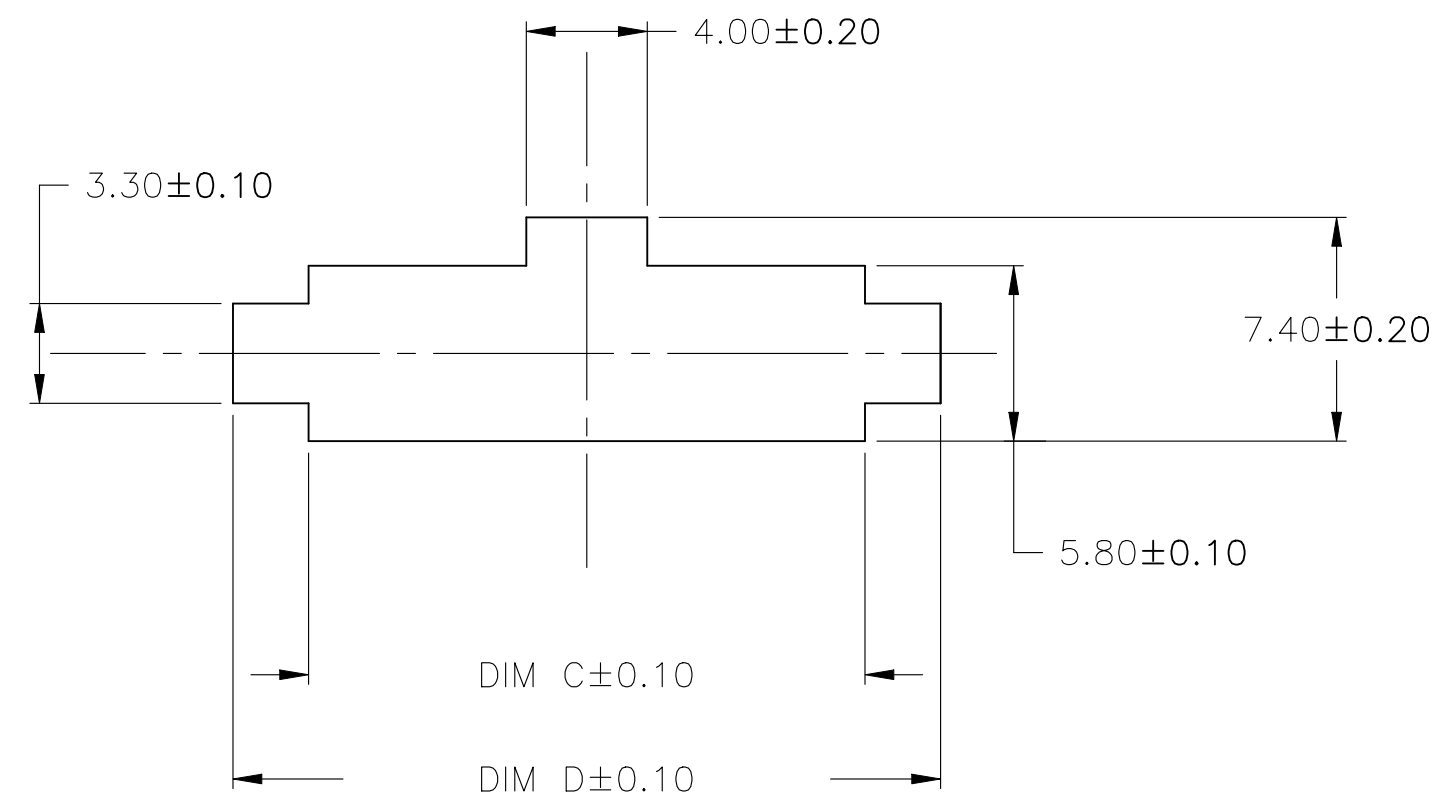
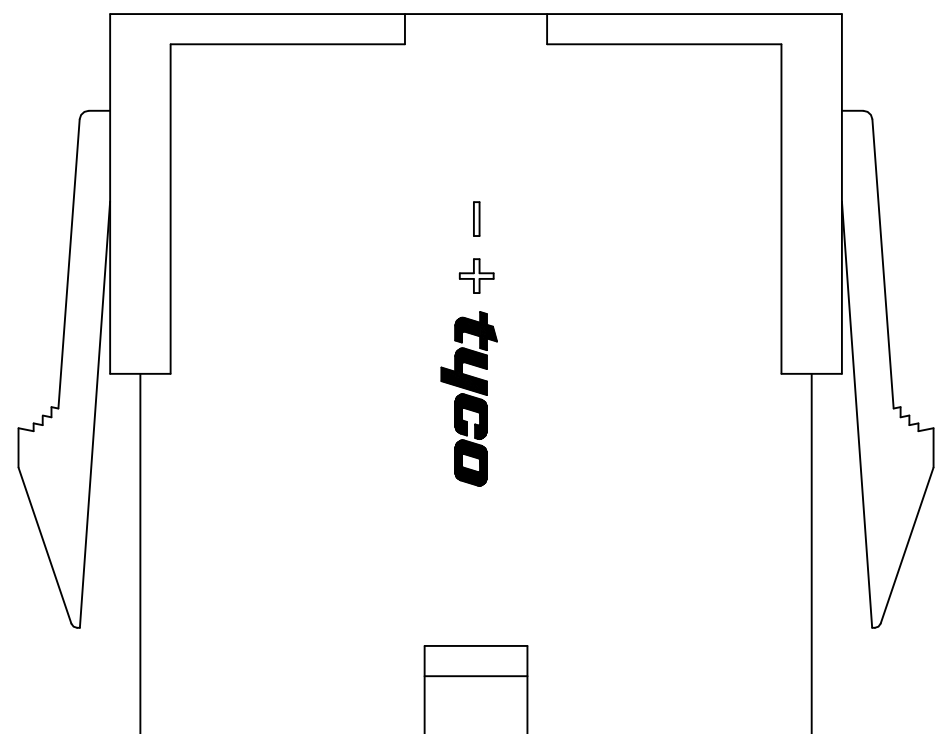
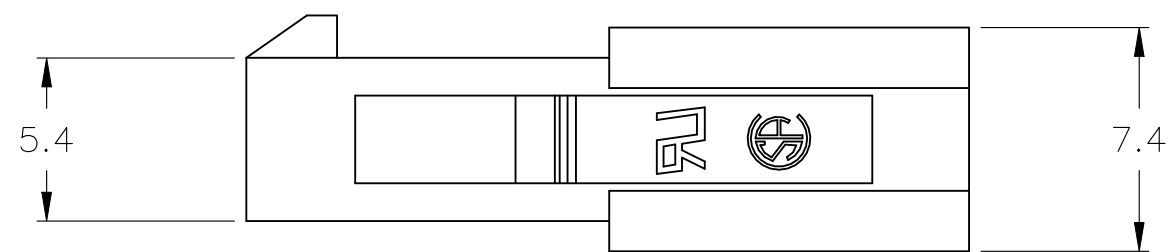
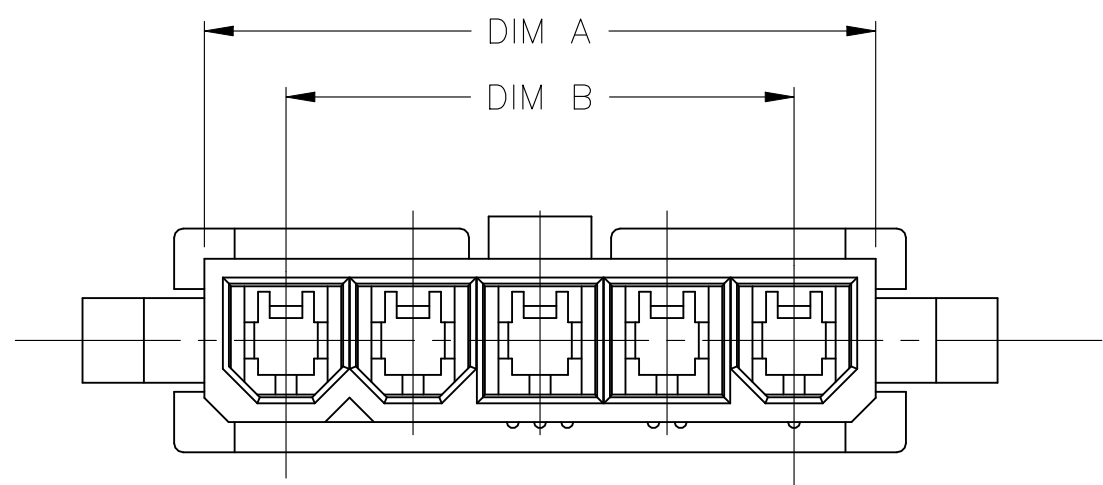


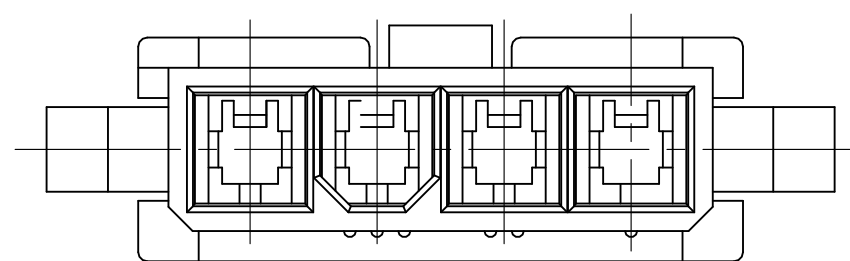
REVISIONS					
P	LTR	DESCRIPTION	DATE	DWN	APVD
D		REVISED PER ECO-08-031188	06JAN09	HMR	CC



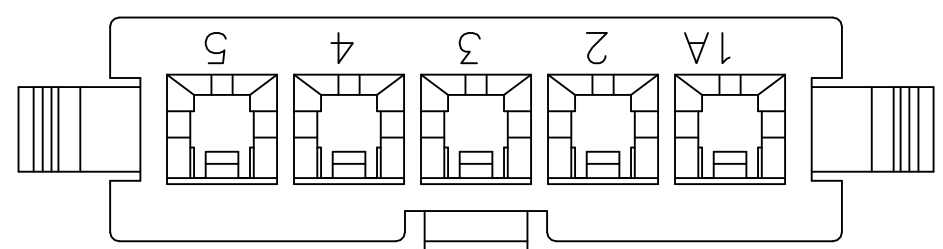
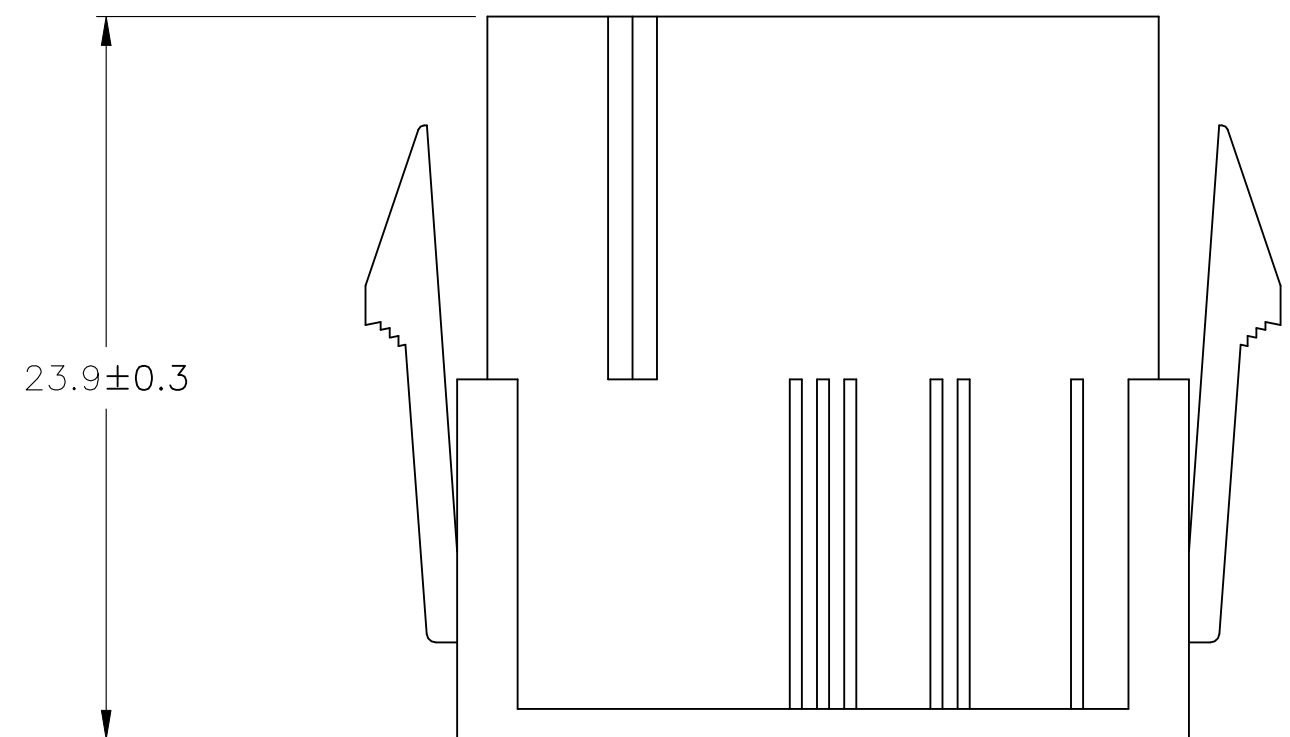
RECOMMENDED CUT-OUT FOR 2.00 MAX THICK PANEL



- 1 MATERIAL: THERMOPLASTIC NYLON66UL94V-0. NATURAL COLOR.
- 2 PANEL SHOULD BE PUNCHED IN THE DIRECTION OF CONNECTOR INSERTION.
- 3 THIS HOUSING ACCEPTS TERMINAL: 794955-1 AND OTHER SIMILAR TERMINALS
- 4 RECOMMENDED MATING PART: []-1586027-[]



4 POSITION MATING FACE (FOR POLARIZATION IDENTIFICATION)



SUPERCEDED BY 2029204-4	BLACK	23.4	18.4	12.6	18.0	4	1-1586023-9
	WHITE	27.6	22.6	16.8	22.2	5	1586023-5
	WHITE	23.4	18.4	12.6	18.0	4	1586023-4
	COLOR	DIM D	DIM C	DIM B	DIM A	POS	PART NUMBER

THIS DRAWING IS A CONTROLLED DOCUMENT.

DIMENSIONS: mm	TOLERANCES UNLESS OTHERWISE SPECIFIED:	DWN K. WHITAKER 19-FEB-04	TE Connectivity
		CHK D. COLEY 19-FEB-04	
		APVD D. COLEY 19-FEB-04	NAME
		PRODUCT SPEC 108-2112	PLUG, PANEL MOUNT, SINGLE ROW VAL-U-LOK(TM)
		APPLICATION SPEC 114-13172	SIZE A2
MATERIAL	FINISH	WEIGHT -	CAGE CODE 00779
		CUSTOMER DRAWING	DRAWING NO C=1586023
		SCALE 5:1	SHEET 1 of 1
			REV D