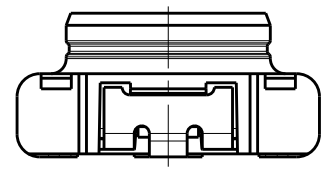
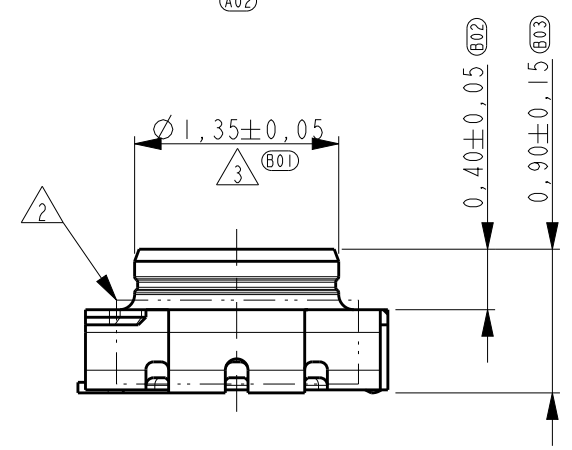
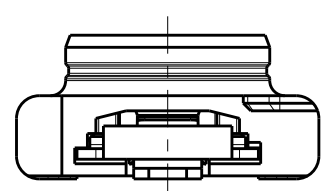
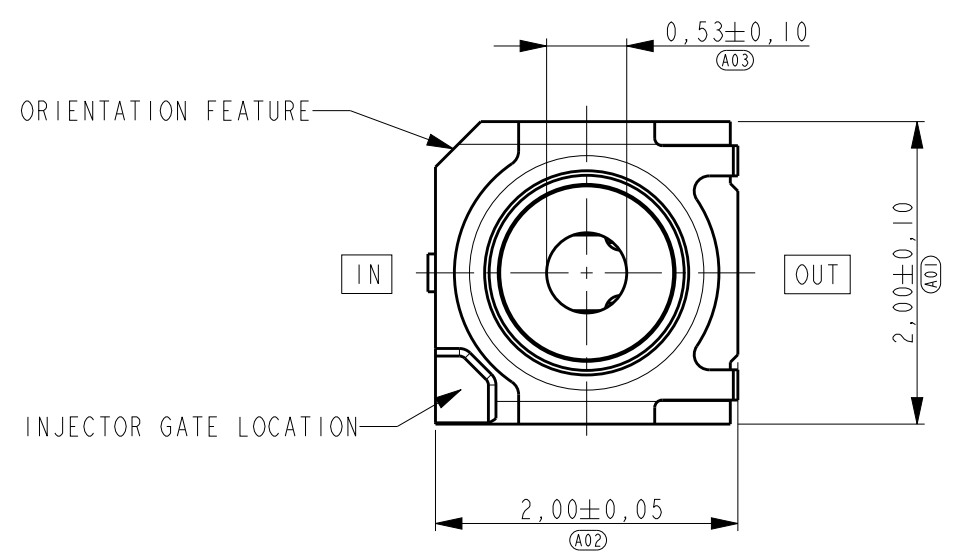
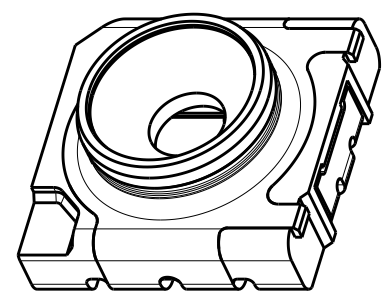


THIS DRAWING IS UNPUBLISHED. RELEASED FOR PUBLICATION  
 © COPYRIGHT - BY - ALL RIGHTS RESERVED.

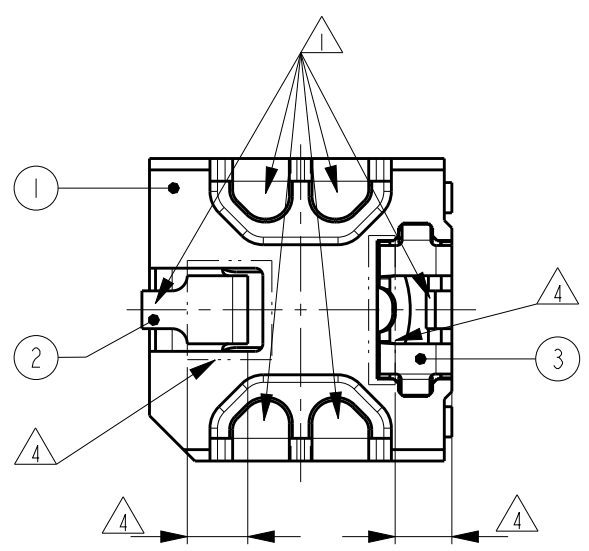
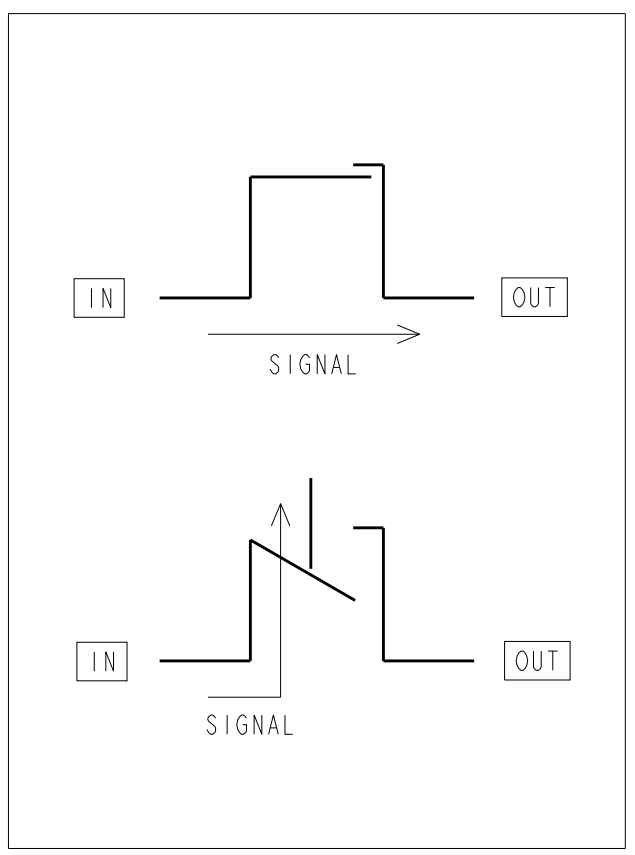
LOC	DIST	REVISIONS					
H	-	P	LTR	DESCRIPTION	DATE	DWN	APVD
		-	-			-	-
		-	-			-	-
		-	-			-	-
		A7		ECR-16-018060	24APR2018	BW	RS



- NOTES:
- 1 COPLANARITY OF SOLDER SURFACES 0,08 MAX.
  - 2 MAX FLASH ALLOWED IN THIS AREA (TWO SIDES) 0,08mm.
  - 3 DIMENSIONS FOLLOW REQUIREMENTS FOR MATING TO:  
MASS PRODUCTION PROBE 619361-1.  
HAND PROBE 619384-1.
  - 4 SOLDER BARRIER AREA; Ni PLATING ON CONTACTS.

**OBSOLETE**

1551372-1 AS SHOWN.



ITEM NO.	DESCRIPTION	MATERIAL	FINISH
3	CONTACT CLIP	COPPER ALLOY	0,1 µm GOLD
2	CONTACT SPRING	COPPER ALLOY	0,1 µm GOLD
1	SHIELD OVERMOULD	LCP, 30%GF / COPPER ALLOY	1,2 µm NICKEL

THIS DRAWING IS A CONTROLLED DOCUMENT.

DIMENSIONS: mm	TOLERANCES UNLESS OTHERWISE SPECIFIED: 0 PLC ±- 1 PLC ±- 2 PLC ±- 3 PLC ±- 4 PLC ±- ANGLES ±- FINISH	DWN 07 SEP 2009 J. Haans CHK 07 SEP 2009 J. Dittner APVD 08 SEP 2009 D. Halberstadt	TE Connectivity NAME RF SWITCH
MATERIAL SEE TABLE	SEE TABLE	PRODUCT SPEC 108-19355 APPLICATION SPEC 114-19113 WEIGHT 0,007 gr	

Customer Drawing SCALE 20:1 SHEET 1 OF 3 REV A7

4

3

2

1

THIS DRAWING IS UNPUBLISHED.

RELEASED FOR PUBLICATION

© COPYRIGHT - BY -

ALL RIGHTS RESERVED.

LOC  
HDIST  
-

REVISIONS

P	LTR	DESCRIPTION	DATE	DWN	APVD
-	-	SEE SHEET 1	-	-	-

Top view of the RF switch component. Dimensions are given in mm with tolerances in parentheses. The component is 8.00 (C06) wide and 3.50 (C05) high. It features five circular contact points spaced 4.00 (C01) apart. The distance from the left edge to the first contact is 2.00 (C02), and the distance between the last contact and the right edge is 1.50 (C03). The unreeled direction is indicated by an arrow pointing to the right.

Section X-X showing the profile of the component. The total height is 2.15 S.C. (C02). The width of the base is 1.05 (C03). The top edge has a radius of R0.10 (C01).

SECTION X-X

Section Z-Z showing the cross-section of the component. The width of the base is 2.15 S.C. (E01).

SECTION Z-Z

NOTES:

- 1 MATERIAL: PS 0,3 mm. COLOR CLEAR.
- 2 ALL INSIDE RADII 0,2 MAX, UNLESS OTHERWISE SPECIFIED.
- 3 ACCORDING EIA-481.0-B.
- 4 MAXIMUM CAMBER 1mm / 250mm.
- 5 REEL DIAM 330mm. 10000 PIECES/REEL

**OBSELETE**

THIS DRAWING IS A CONTROLLED DOCUMENT.

DIMENSIONS:

mm

TOLERANCES UNLESS OTHERWISE SPECIFIED:

0 PLC	±-
1 PLC	±-
2 PLC	±-
3 PLC	±-
4 PLC	±-
ANGLES	±-
FINISH	±-

MATERIAL SEE TABLE

FINISH SEE TABLE

DWN 07 SEP 2009

J. Haans

CHK 07 SEP 2009

J. Dittner

APVD 08 SEP 2009

D. Halberstadt

PRODUCT SPEC

108-19355

APPLICATION SPEC

114-19113

WEIGHT 0,007 gr

Customer Drawing

**STE**

TE Connectivity

NAME

RF SWITCH

SIZE

A3

CAGE CODE

00779

DRAWING NO

C=1551372

RESTRICTED TO

-

SCALE 20:1

SHEET 2 OF 3

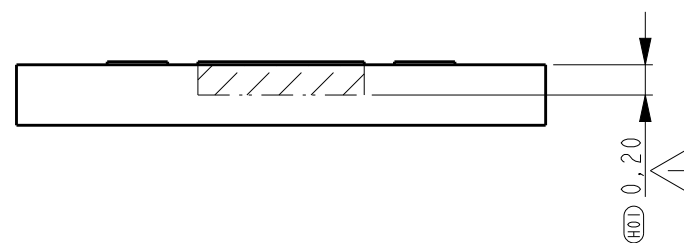
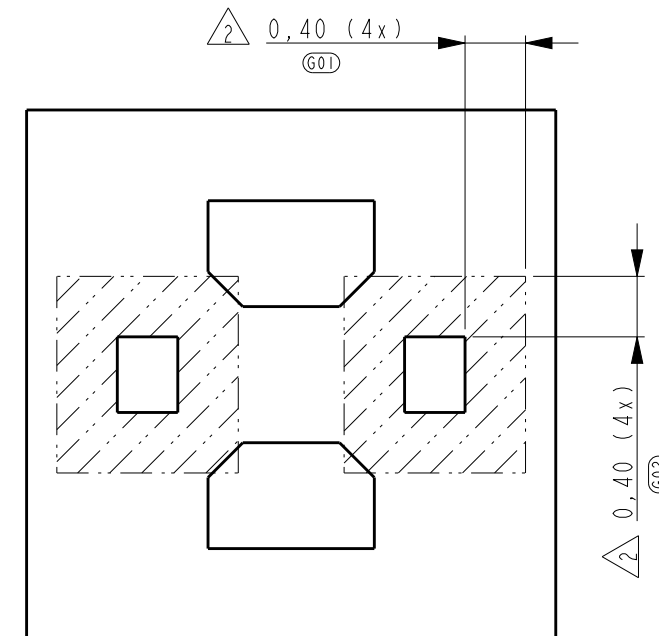
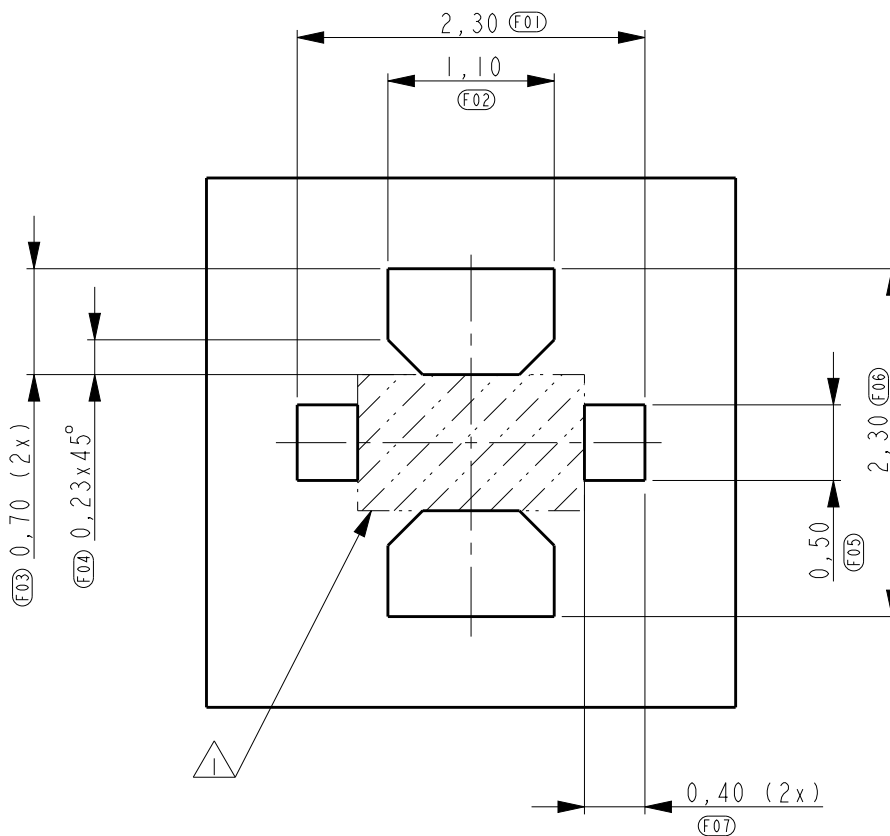
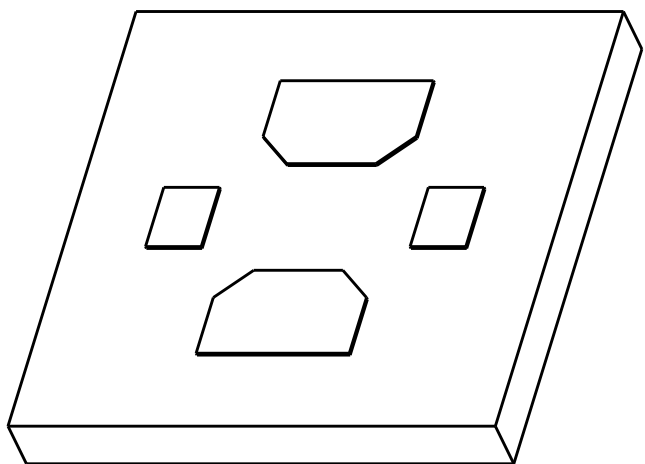
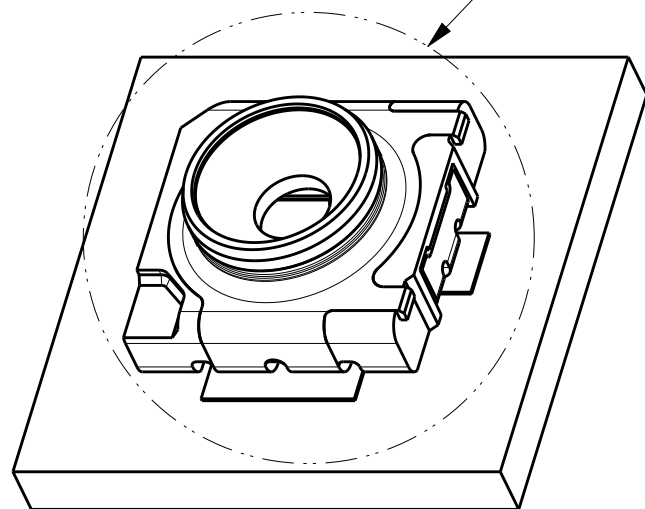
REV A7

1470-19 (3/11)

THIS DRAWING IS UNPUBLISHED. RELEASED FOR PUBLICATION  
 © COPYRIGHT - BY - ALL RIGHTS RESERVED.

LOC	DIST	REVISIONS			
P	LTR	DESCRIPTION	DATE	DWN	APVD
H	-	SEE SHEET 1	-	-	-


KEEP AREA FREE FROM DUST PARTICLES AS RESULT OF BOARD CUTTING ETC.



- △ NO COPPER PERMITTED UNDER THE SWITCH AT SPECIFIED DIMENSION. WHEN DEVIATED FROM DIMENSION: SIGNAL AND GROUND CONNECTIONS MUST BE DESIGNED TO MATCH THE 50 OHM IMPEDANCE.
- △ NO OTHER SIGNAL OR GROUND PATTERN ALLOWED WITHIN SPECIFIED AREA.

RECOMMENDED PCB LAYOUT

**OBSOLETE**

THIS DRAWING IS A CONTROLLED DOCUMENT.		DWN 07 SEP 2009 J. Haans	 TE Connectivity	
DIMENSIONS: mm		CHK 07 SEP 2009 J. Dittner		
TOLERANCES UNLESS OTHERWISE SPECIFIED:		APVD 08 SEP 2009 D. Halberstadt	NAME RF SWITCH	
0 PLC ±-		PRODUCT SPEC 108-19355	SIZE A3	
1 PLC ±-		APPLICATION SPEC 114-19113	CAGE CODE 00779	DRAWING NO C-1551372
2 PLC ±-		WEIGHT 0,007 gr	RESTRICTED TO -	
3 PLC ±-		Customer Drawing	SCALE 20:1	SHEET 3 OF 3
4 PLC ±-			REV A7	
ANGLES ±-				
FINISH SEE TABLE				