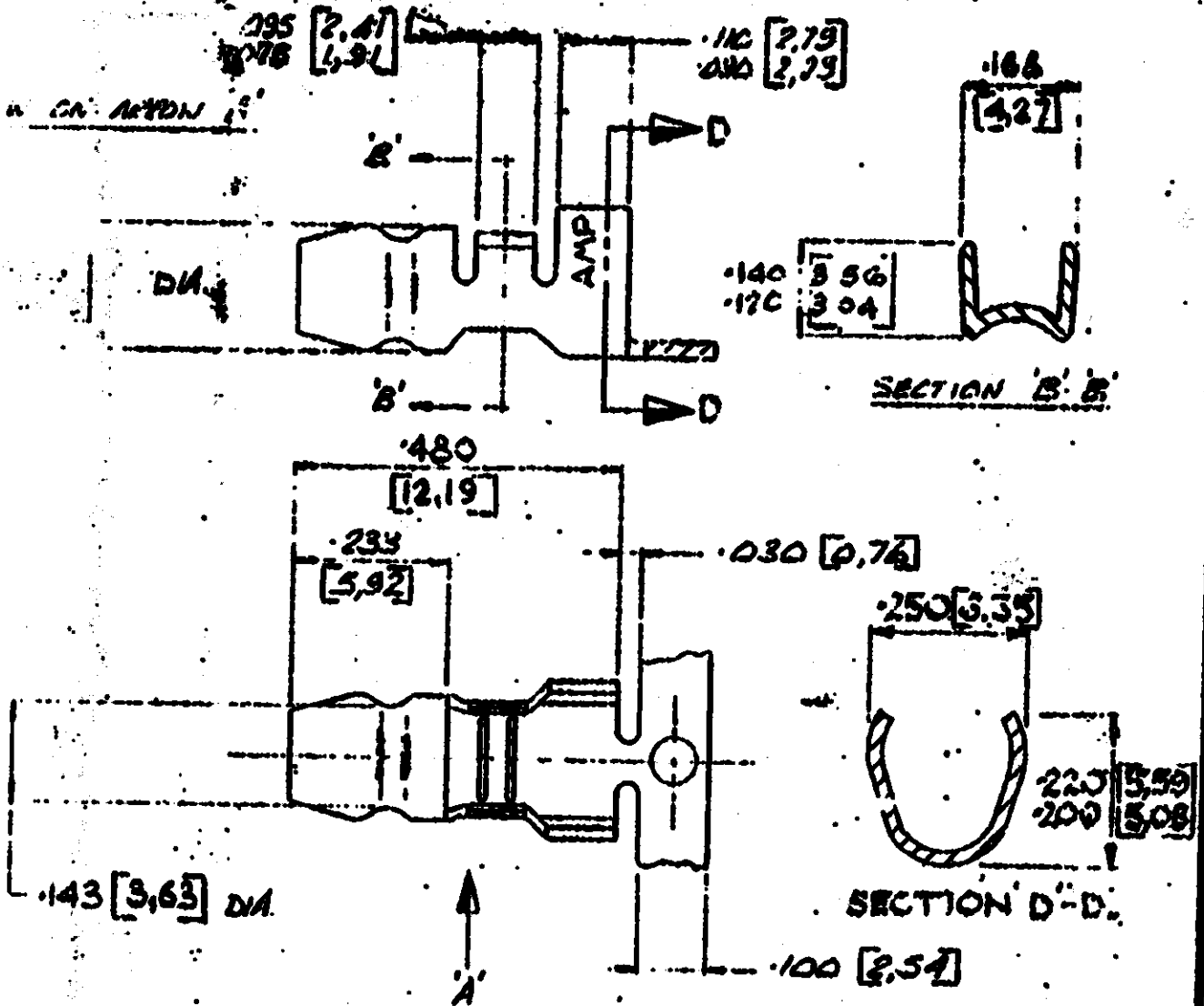


3rd ANGLE (AMERICAN) PRACTICE

DIMENSIONS IN INCHES. DO NOT SCALE PRINT. DIMENSIONS IN MILLIMETERS () IN PARENTHESIS.

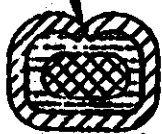
NUMBER

VIEW ON ARROW

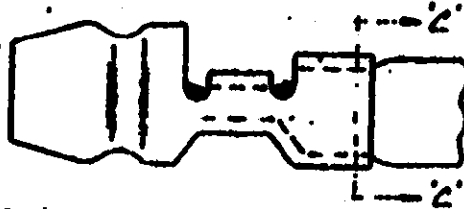


GUAGE DIMENSIONS.

INSULATION BARREL WHEN CLAMPED MUST ENTER .191 [4.85] DIA HOLE AND MUST NOT ENTER .182 [4.62] DIA. HOLE



SECTION C-C



WIRE RANGE 12-14

[0.7 - 2.0 mm²]

INSULATION RANGE .145 DIA MAX

[3.65]

K -2 OBSOLETE		AEH	C	3064	37-74	© AMP of GREAT BRITAIN LTD 1972	CUSTOMER COPY REFERENCE ONLY
L	40/120 WAs 180/170	C.S.			12577		
M	1/2" DIA. 15-6 CALIBER 1/2" DIA. 12-6 CALIBER	E.S.			1971	AMP of Great Britain Ltd	AUTOMATING
N	DIAMS AMENDED	D.M.			1-1-73		
O	GENERAL	P.H.			1-1-72	WIRE - RANGE - INSULATION AS STATED - AS SHOWN	
P	REVISION RECORD	DR	CHK	DATE		TOLERANCE SYSTEM AS NOTED E. 415 (1.25) S.P.V.	SCALE
Q	7-ABBOTT 10-5-72	DR			11-5-72	LOG. NO.	E. A. C-152471-1
R						MAPS	REV
						SIDE FEEL RIFLET ROUNDS	

PRINT DIST