

THIS DRAWING IS UNPUBLISHED.

RELEASED FOR PUBLICATION

20

© COPYRIGHT 20 BY -

ALL RIGHTS RESERVED.

REVISIONS

P	LTR	DESCRIPTION	DATE	DWN	APVD
E		REVISE PER 0A00-0128-05	15APR05	KG	DW
F		ECR-16-000809	12FEB2016	KG	DW
G		ECR-17-001574	11APR2017	KG	DW

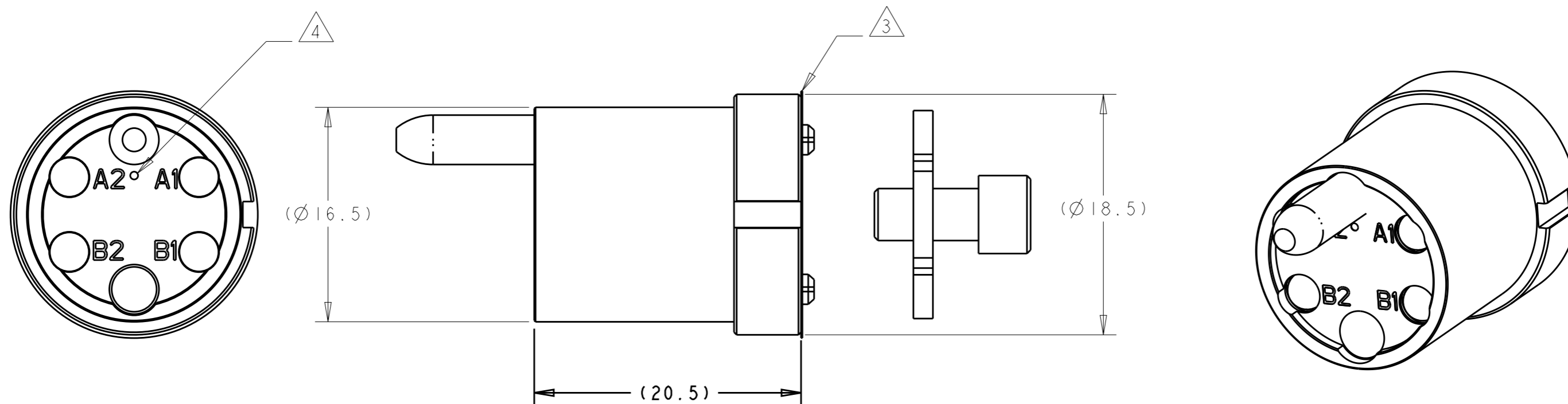
1. USE WITH FERRULE ASSEMBLY KIT P/N 1515941-1, 125um, OR 1515941-2, 126um. QUANTITY OF 4 REQUIRED. FERRULE MUST BE PC-POLISHED DURING FIBER TERMINATION FOR BEST PERFORMANCE.

2. FOR USE AT BOTH 1310 AND 1550nm WAVELENGTHS.

3. PROTECTIVE LABEL APPLIED AFTER FINAL CLEAN ROOM TEST TO PREVENT OPTICAL CAVITY CONTAMINATION. REMOVE ONLY WHEN READY TO ASSEMBLE.

4. SINGLEMODE IDENTIFIER.

5. THIS PRODUCT HAS NOT COMPLETED VALIDATION TESTING.



1515735-1

PART NUMBER

THIS DRAWING IS A CONTROLLED DOCUMENT.

DWN K. GLATFELTER 19APR2004

CHK D. WERTMAN 04JUN2004

APVD D. WERTMAN 18JUN2004

PRODUCT SPEC -

APPLICATION SPEC -

WEIGHT -

CUSTOMER DRAWING



TE Connectivity

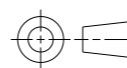
NAME INSERT ASSEMBLY, PRO BEAM SR., 4x1310/1550nm SM

SIZE CAGE CODE DRAWING NO RESTRICTED TO

A300779 C-1515735

SCALE 3:1 SHEET 1 OF 1 REV G

DIMENSIONS: mm



TOLERANCES UNLESS OTHERWISE SPECIFIED:

0 PLC	±-
1 PLC	±-
2 PLC	±-
3 PLC	±-
4 PLC	±-
ANGLES	±-

MATERIAL STAINLESS ALLOYS- & NBR

FINISH N/A