

4

3

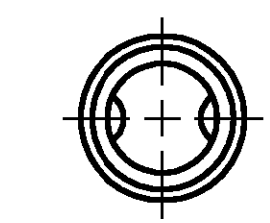
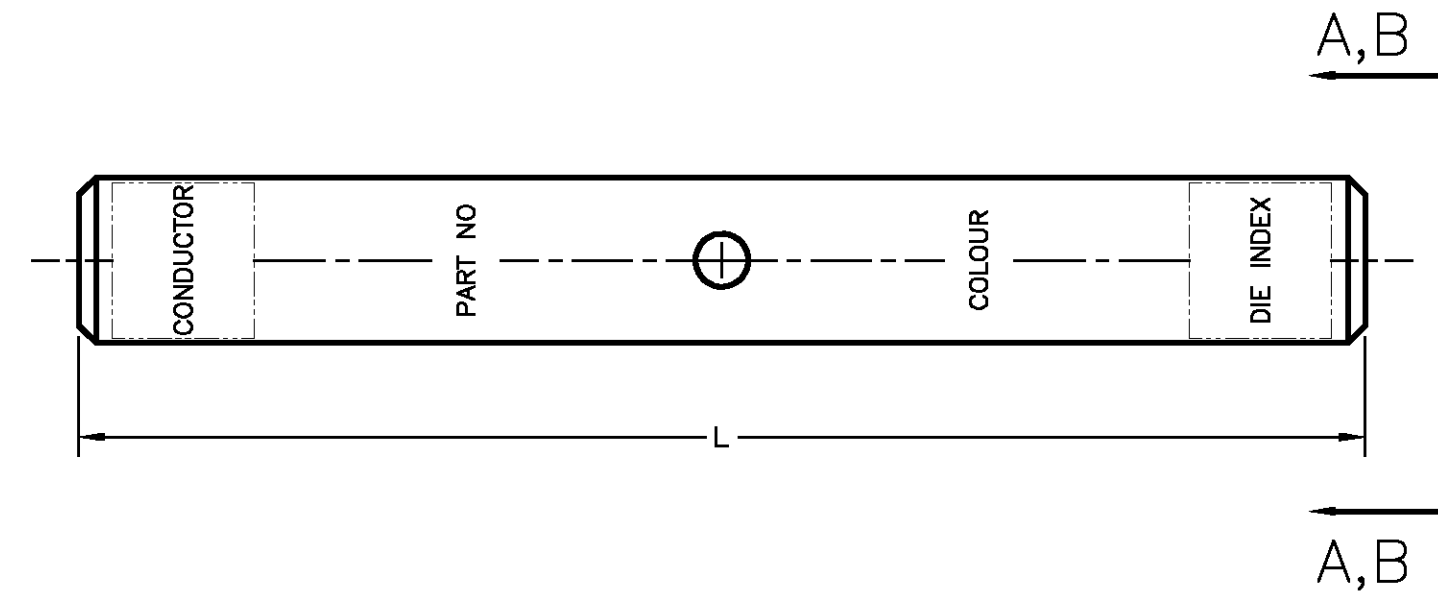
2

1

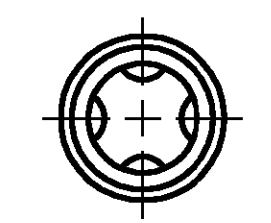
THIS DRAWING IS UNPUBLISHED. RELEASED FOR PUBLICATION
 © COPYRIGHT BY TYCO ELECTRONICS CORPORATION. ALL RIGHTS RESERVED.

LOC		DIST		REVISIONS			
P	LTR	DESCRIPTION		DATE	DWN	APVD	
GA	1	02	REVISED PER EC LC20-0097-05		24 MAY 05	DR	BJ

1. DIMENSIONS ARE FOR REFERENCE ONLY.



VIEW A-A



VIEW B-B

3-1/16	1	-	6.12	27 (4)	WHITE	1000 MCM	1-1443403-7
2-15/16	1	-	5.88	24 (4)	BLACK	750 MCM	1-1443403-6
2-3/4	1	-	5.50	22 OR 472 (4)	GREEN	600 MCM	1-1443403-5
2-5/16	1	-	4.62	20 OR 299 (4)	BROWN	500 MCM	1-1443403-4
2-3/16	1	-	4.38	19 OR 470 (4)	BLUE	400 MCM	1-1443403-3
2-1/16	1	-	4.13	18 OR 324 (4)	RED	350 MCM	1-1443403-2
2-1/16	1	-	4.13	17 OR 298 (4)	WHITE	300 MCM	1-1443403-1
1-11/16	1	-	3.39	16 (2)	YELLOW	250 MCM	1-1443403-0
1-11/16	1	-	3.39	15 (2)	PURPLE	4/0 STR	1443403-9
1-9/16	1	-	3.15	14 (2)	ORANGE	3/0 STR	1443403-8
1-9/16	1	-	3.15	13 (2)	BLACK	2/0 STR	1443403-7
1-7/16	1	-	2.91	12 OR 348 (2)	PINK	1/0 STR	1443403-6
1-7/16	1	-	2.91	11 OR 375 (2)	GREEN	1 STR	1443403-5
1-5/16	1	-	2.65	10 (2)	BROWN	2 STR	1443403-4
1-1/4	-	1	2.53	9 (2)	WHITE	3 STR	1443403-3
1-3/16	-	1	2.41	8 OR 346 (2)	GRAY	4 STR	1443403-2
1-3/16	-	1	2.41	7 OR 374 (2)	BLUE	6 STR	1443403-1
WIRE STRIP LENGTH	VIEW B	VIEW A	L	DIE INDEX (NO. OF CRIMPS)	COLOUR CODE	CONDUCTOR	PART NO

THIS DRAWING IS A CONTROLLED DOCUMENT.

DIMENSIONS: INCHES	TOLERANCES UNLESS OTHERWISE SPECIFIED:	DWR: C. DAVID 23 MAR 04	Tyco Electronics Corporation Markham, ON L3R 1E1
	0 PLC ± 1 PLC ± 2 PLC ± 3 PLC ± 4 PLC ± ANGLES ± 0.5° FINISH	CHK: P. CHAN 09 JUN 04 APVD: B. JOHNSON 11 JUN 04 PRODUCT SPEC APPLICATION SPEC WEIGHT	
MATERIAL: COPPER ALLOY	TIN PLATE	CUSTOMER DRAWING	NAME: COMPRESSION BUTT SPLICE, COPPER, LONG BARREL, UTILUX SIZE: A2 CAGE CODE: 00779 DRAWING NO: 1443403 RESTRICTED TO: NTS SCALE: NTS SHEET: 1 OF 1 REV: 02

1443403

B

A