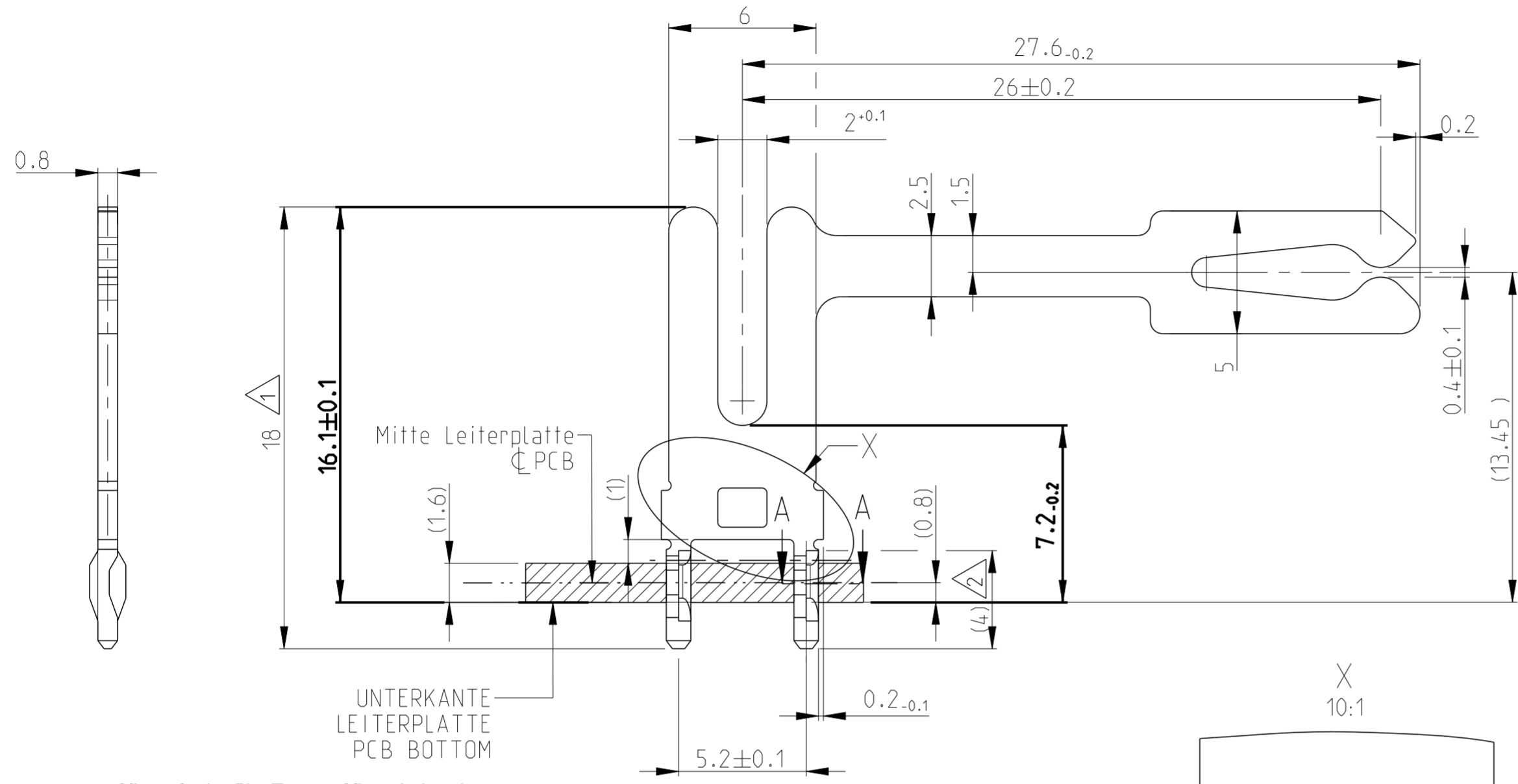
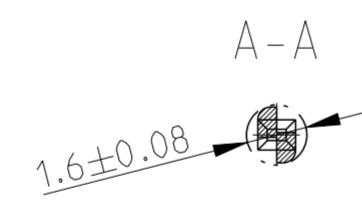


THIS DRAWING IS UNPUBLISHED. VERTRAULICHE UNVERÖFFENTLICHTE ZEICHNUNG
 RELEASED FOR PUBLICATION FREI FUER VERÖFFENTLICHUNG
 ALL RIGHTS RESERVED. ALLE RECHTE VORBEHALTEN.
 MATED WITH: PASSEND ZU:

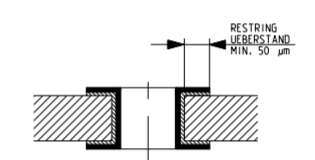
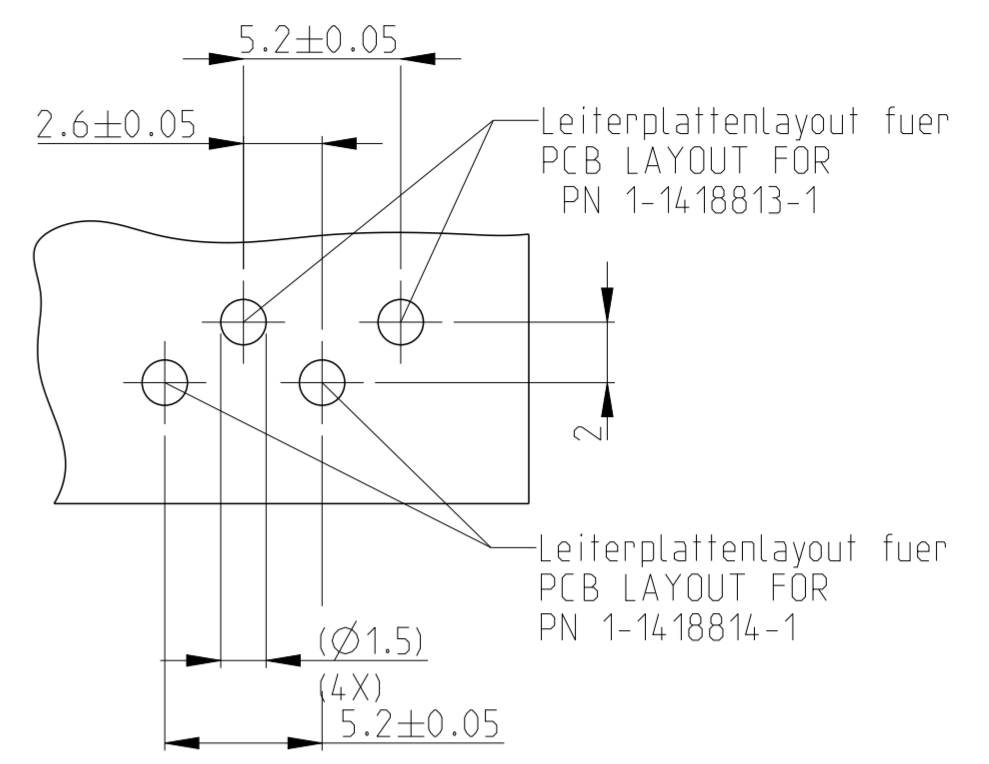
PROJEKT NR.: EGATN02094		REVISIONS			
P	LTR	DESCRIPTION	DATE	DWN	APVD
	A2	DRW. OVERWORKED	29OCT2015	ST	HB



Mitte Action-Pin Zone = Mitte Leiterplatte
 CENTER ACTION PIN = CENTER PCB

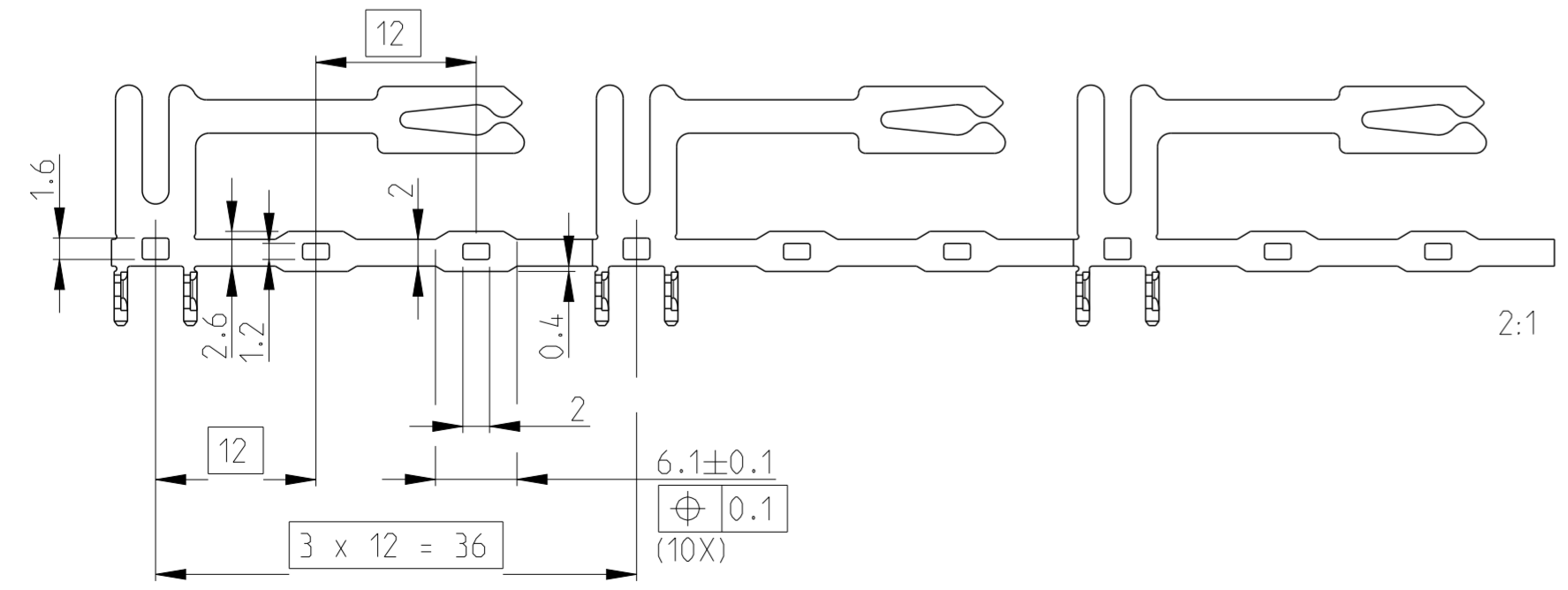


Alternative mit R0.15mm
 ALTERNATIVE WITH R0.15mm



PLATED THROUGH HOLE SPECIFICATION SPEZIFIKATION FUER DURCHPLATIERTE BOHRUNGEN	
Cu THICKNESS KUPFER-SCHICHTDICKE	25-50 µm
Sn THICKNESS ZINN-SCHICHTDICKE	4-15 µm
DRILLED HOLE Ø1.5±0.025 BOHRLOCH-Ø1.5±0.025	FINISHED HOLE Ø1.29±0.15 PLATIRTER LOCH-Ø1.29±0.15

- NOTES
Bemerkungen
- 1 1-3 µm Sn PER TE-SPEC 112-16-3
OVER 1.27-2.54 µm Ni PER TE-SPEC 112-25-2
1-3 µm Sn nach TE-Spez. 112-16-3
ueber 1.27-2.54 µm Ni nach TE-Spez. 112-25-2
 - 2 ACTION PIN FEATURE PER TE-SPEC.
Action Pin Zone nach TE-Spez.
 - 3 PALLETSREEL: COIL CORE INSIDE MIN. Ø300mm
Palettenreel: Spulenkern innen min. Ø300mm



1	26.0mm	CuSn4 (R605)	1	1-1418814-1	A
POS.	DIM L=	MATERIAL	FINISH	PART NO	REV.

DIESE ZEICHNUNG IST EIN KONTROLLIERTES DOKUMENT. BEMASSUNGEN UND TOLERANZEN GEMAESS GPS (ISO STANDARDS).		DWN	16OCT2012
THIS DRAWING IS A CONTROLLED DOCUMENT. DIMENSIONING AND TOLERANCING PER GPS (ISO STANDARDS).		CHK	V. Holzmann 16OCT2012
DIMENSIONS: MASSEINHEITEN: (MM)	TOLERANCES UNLESS OTHERWISE SPECIFIED: ALLGEMEINTOLERANZEN DIN ISO 2768-m	APVD	V. Holzmann
0 PLC ±	1 PLC ±	PRODUCT SPEC	108-94014
2 PLC ±	3 PLC ±	APPLICATION SPEC	114-18746
4 PLC ±	ANGLES/WINKEL ±°	WEIGHT	-
MATERIAL	FINISH/OBERFLAECHE/FARBE	GEWICHT	-
Cu Sn 4	-	Customer Drawing	/KUNDENZEICHNUNG

TE Connectivity		NAME	
		A_P-PCB MOTOR-CONTACT 90 DEG. A_P-PCB MOTOR-KONTAKT 90 GR.(26MM)	
SIZE	CAGE CODE	DRAWING NO	RESTRICTED TO
A2	00779	11418814	NUR FUER
SCALE	SHEET	1 OF	REV
5:1	BLATT	VON 1	A2