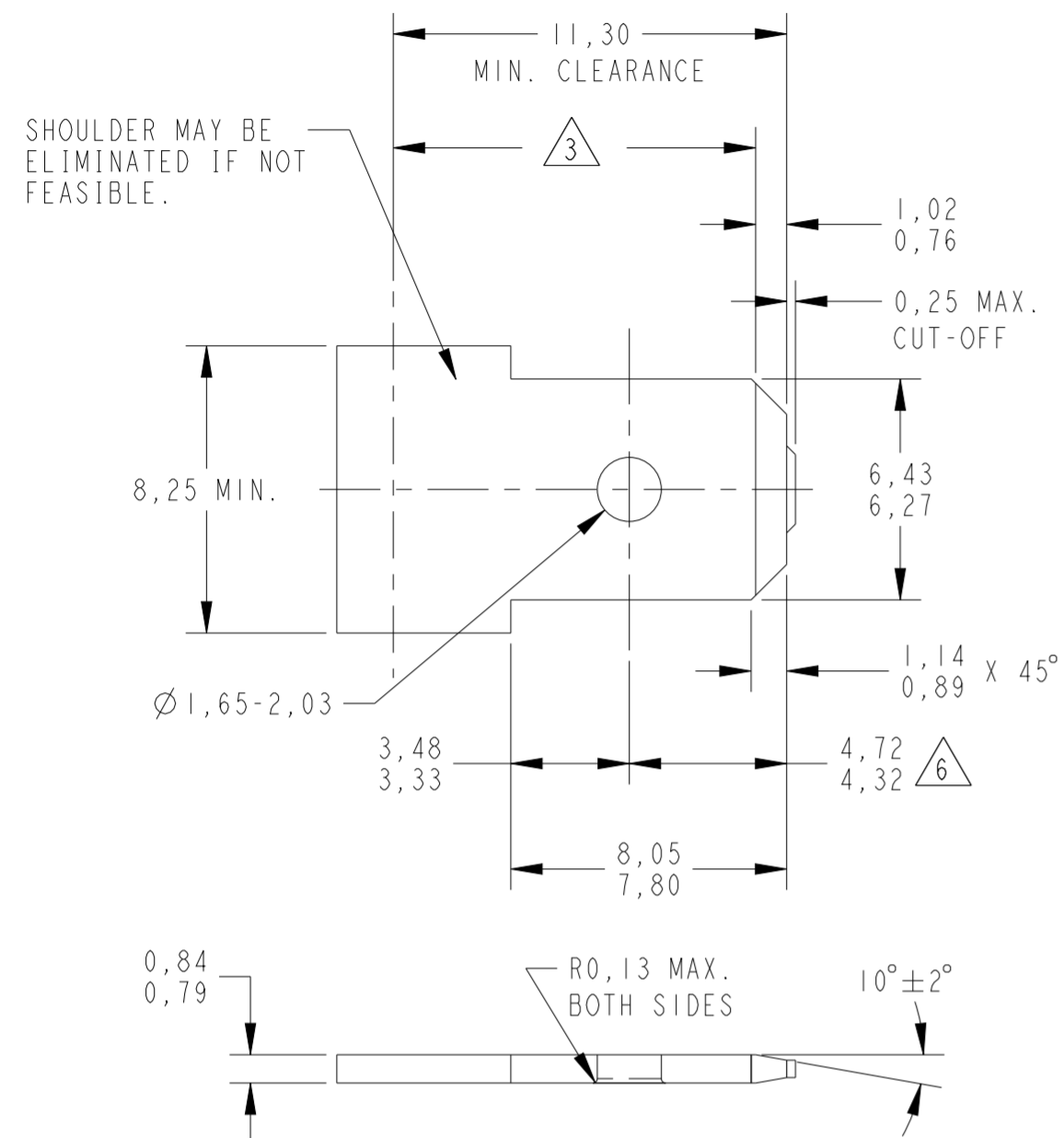
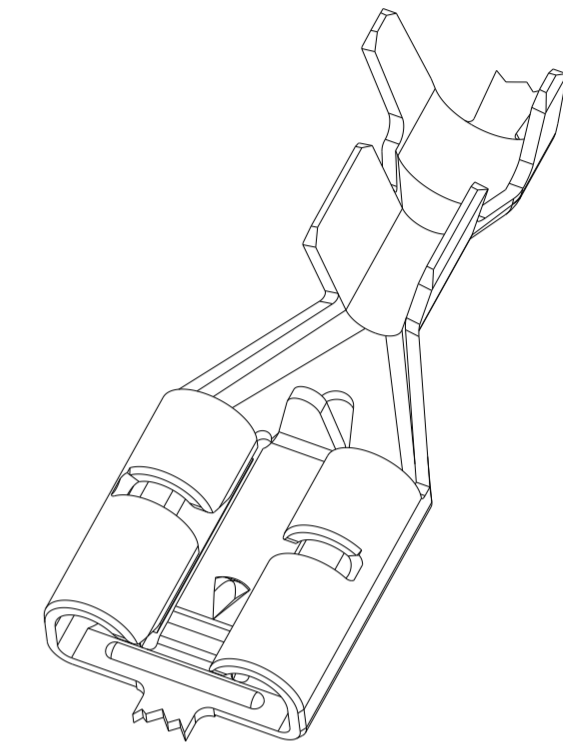
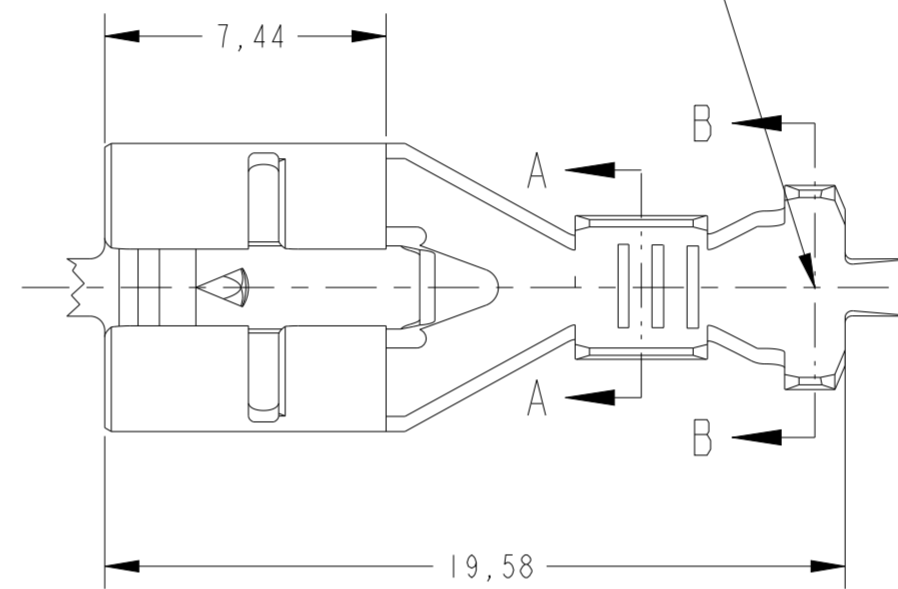


P	LTR	DESCRIPTION	DATE	DWN	APVD
C1		REV. BY ECO 11-009578	10MAY2011	HC	WLS
C2		REV. BY ECO 16-003728	11MAR2016	HC	WLS
C3		REVISED BY ECO 16-016497	16NOV2016	HC	WLS
C4		REVISED PER ECN-23-197367	09FEB2023	WLS	DT

SUGESTED MATING TAB

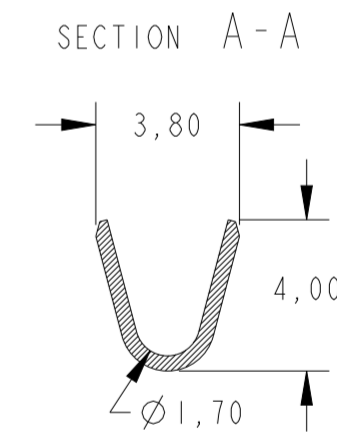
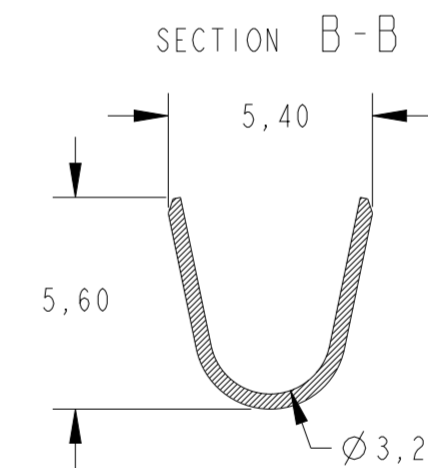
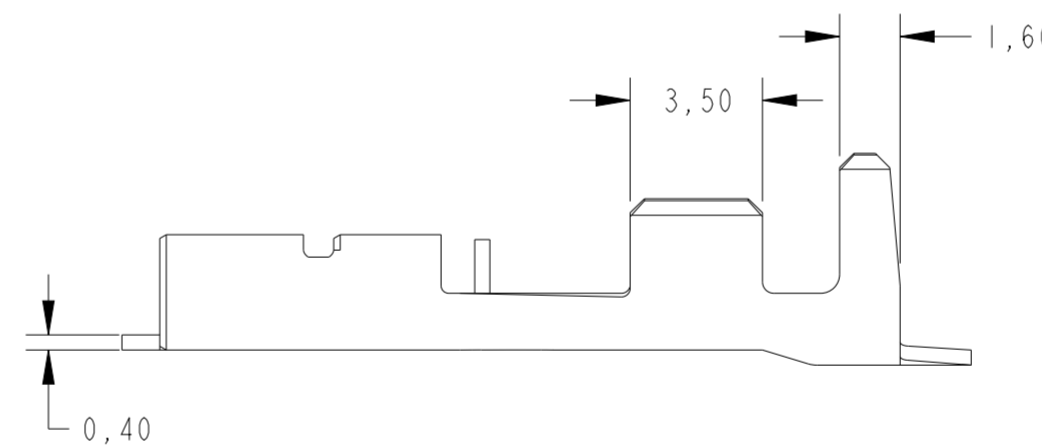
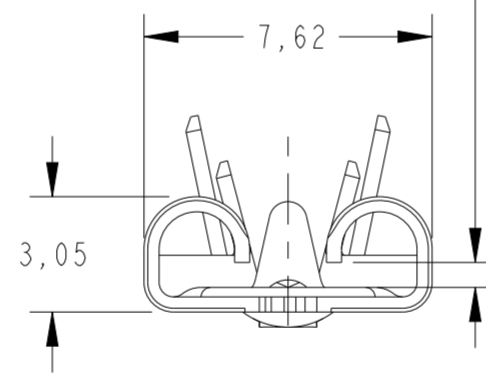


LOGOTIPO E CODIGO DO PAÍS PRODUTOR
LOGO AND MANUFACTURING COUNTRY CODE.



1- WIRE RANGE > 1,00 / 2,50 mm².
INSULATION DIA. RANGE Ø2,70 / 3,70 mm.

PARA LINGUETA ESPESSURA 0,8mm
FOR 0,8mm TAB THK.



- MATERIAL: 1/2 HARD BRASS OR NICKEL PLATED STEEL.
- NO BURRS PERMISSIBLE AT HOLE.
- MUST BE FLAT WITHIN 0.076 MM OVER THIS LENGTH.
- TIN PLATING IS REQUIRED ON BRASS WHEN TERMINAL TEMPERATURE IS OVER 107°C.
- HOLE MUST BE SYMMETRICAL ABOUT TAB CENTER WITHIN 0.076 MM.
- TO BE USED ONLY WHEN SHOULDER IS ELIMINATED.

OBsolete	ESTANHADO/TINNED	LATÃO/BRASS	1380089-2
	NU/NONE	LATÃO/BRASS	1380089-1
	FINISH	MATERIAL	PART NUMBER

THIS DRAWING IS A CONTROLLED DOCUMENT.		DWN H.C. CANTERI 15AUG00	TE Connectivity	
DIMENSIONS: mm		CHK W.L. STEFANI 15AUG00		
TOLERANCES UNLESS OTHERWISE SPECIFIED:		APVD 15AUG00	NAME POSITIVE LOCK MKIII, L.I.F .250 SERIES RECEPT.	
0 PLC ±		PRODUCT SPEC 108-37058	SIZE A2	
1 PLC ±		APPLICATION SPEC	CAGE CODE 00779	
2 PLC ±0,25			DRAWING NO C-1380089	
3 PLC ±			RESTRICTED TO	
4 PLC ±			SCALE 10:1	
ANGLES ±1°			SHEET OF	
FINISH SEE TABLE		WEIGHT -	REV C4	
MATERIAL SEE TABLE		CUSTOMER DRAWING		