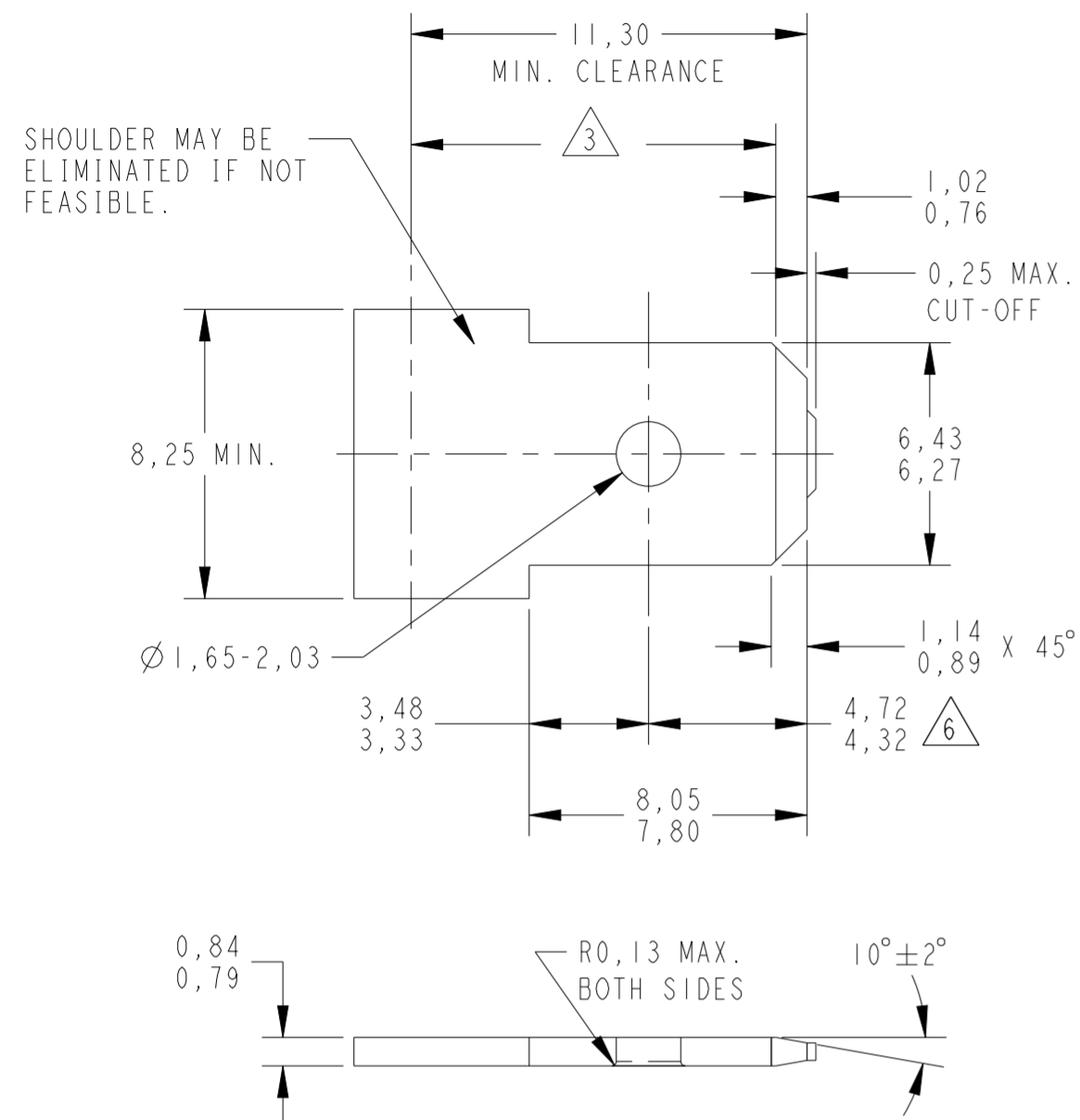
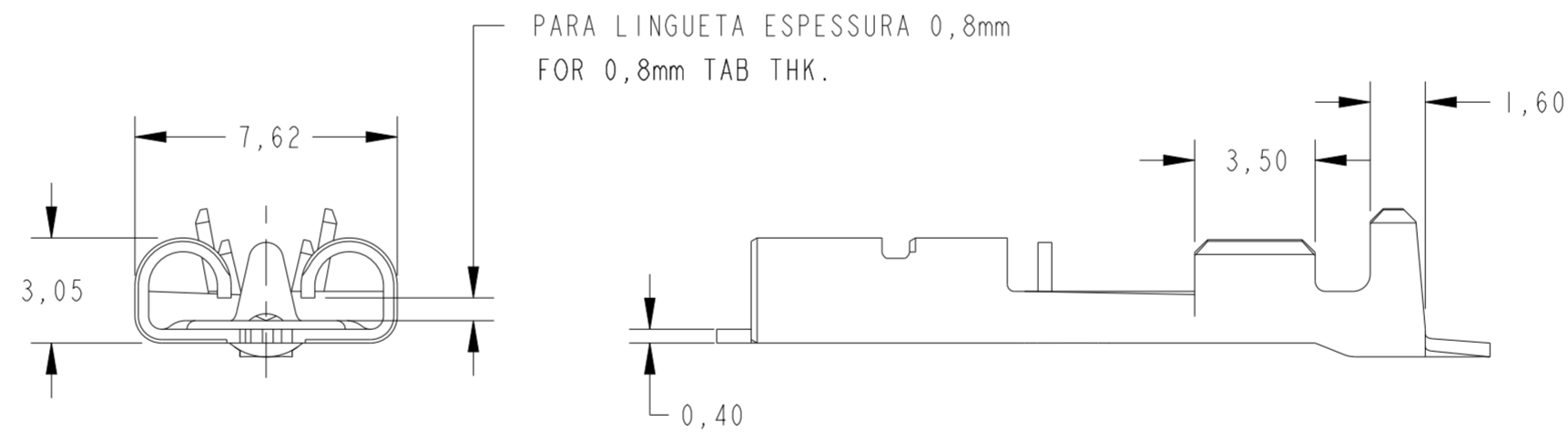


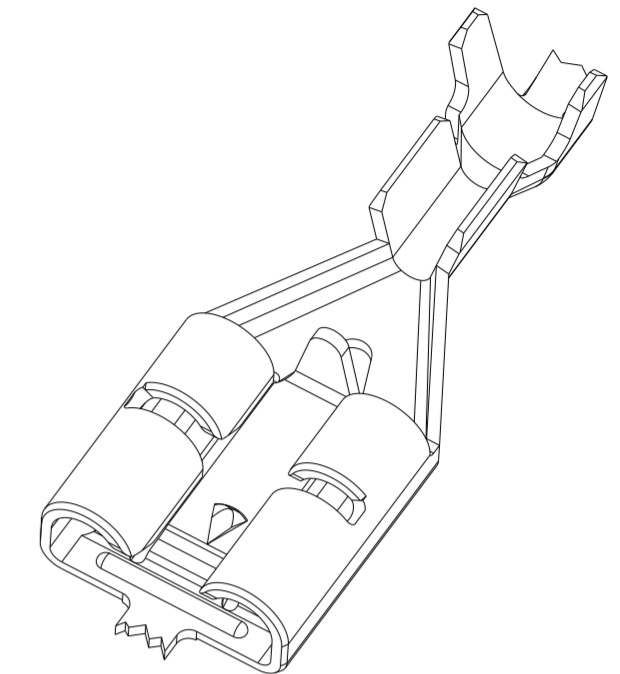
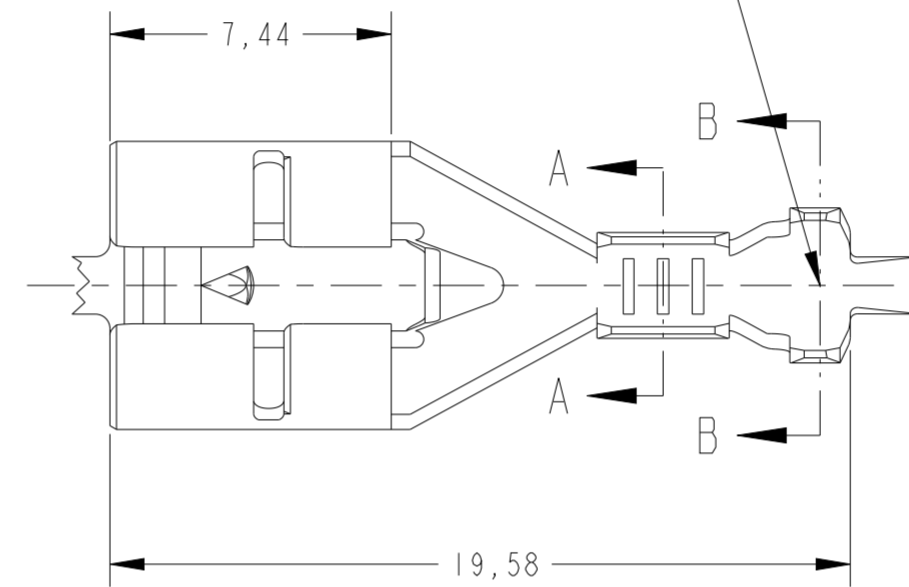
# SUGGESTED MATING TAB



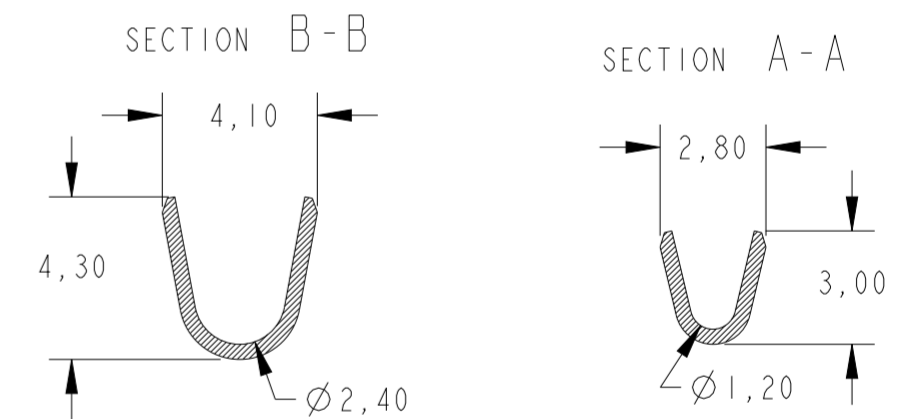
- 1 MATERIAL: 1/2 HARD BRASS OR NICKEL PLATED STEEL.
- 2 NO BURRS PERMISSIBLE AT HOLE.
- 3 MUST BE FLAT WITHIN 0.076 MM OVER THIS LENGTH.
- 4 TIN PLATING IS REQUIRED ON BRASS WHEN TERMINAL TEMPERATURE IS OVER 107°C.
- 5 HOLE MUST BE SYMMETRICAL ABOUT TAB CENTER WITHIN 0.076 MM.
- 6 TO BE USED ONLY WHEN SHOULDER IS ELIMINATED.



LOGOTIPO E CODIGO DO PAÍS PRODUTOR  
LOGO AND MANUFACTURING COUNTRY CODE.



1- WIRE RANGE 0,50 / 1,00 mm<sup>2</sup>  
INSULATION DIA. RANGE Ø2,00 / 2,70 mm.



OBsolete	ESTANHADO/TINNED	LATÃO/BRASS	1380088-2
	NU/NONE	LATÃO/BRASS	1380088-1
	FINISH	MATERIAL	PART NUMBER

THIS DRAWING IS A CONTROLLED DOCUMENT.		DWN H.C.CANTERI 09AUG00	TE Connectivity	
		CHK W.L.STEFANI 09AUG00		
		APVD - 09AUG00		
DIMENSIONS: mm	TOLERANCES UNLESS OTHERWISE SPECIFIED:	PRODUCT SPEC 108-37058	NAME POSITIVE LOCK MKIII, L.I.F .250 SERIES RECEPT.	
	0 PLC ± 1 PLC ± 2 PLC ±0,25 3 PLC ± 4 PLC ±	APPLICATION SPEC -	SIZE A2	CAGE CODE 00779
MATERIAL SEE TABLE	FINISH SEE TABLE	WEIGHT -	DRAWING NO C-1380088	RESTRICTED TO -
CUSTOMER DRAWING			SCALE 10:1	SHEET OF 1
				REV C3