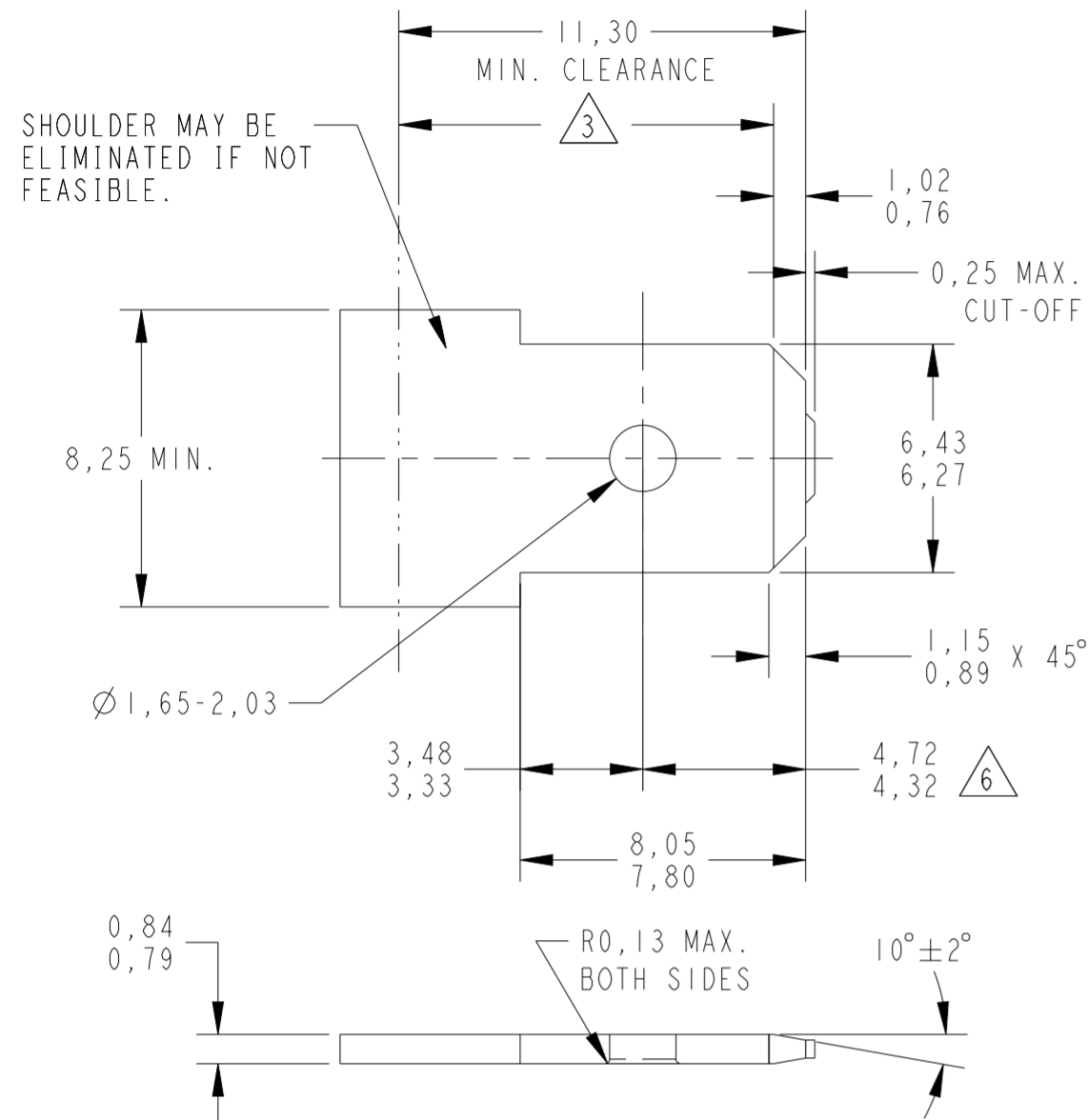
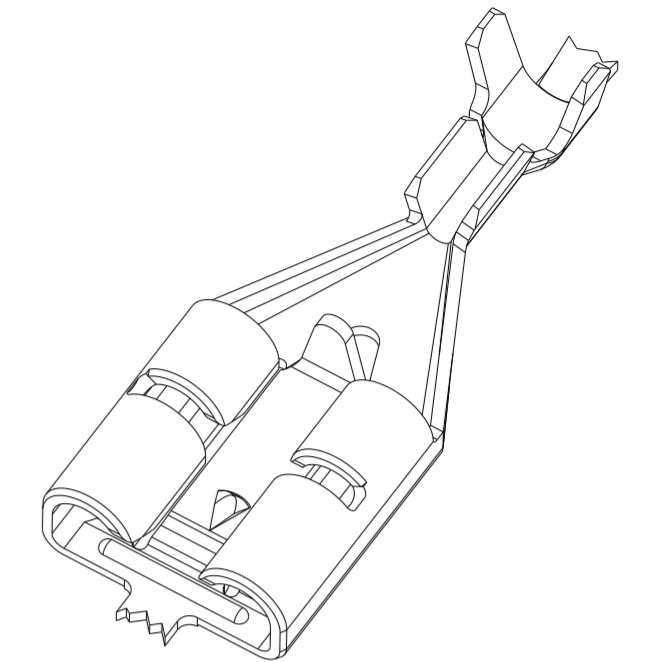
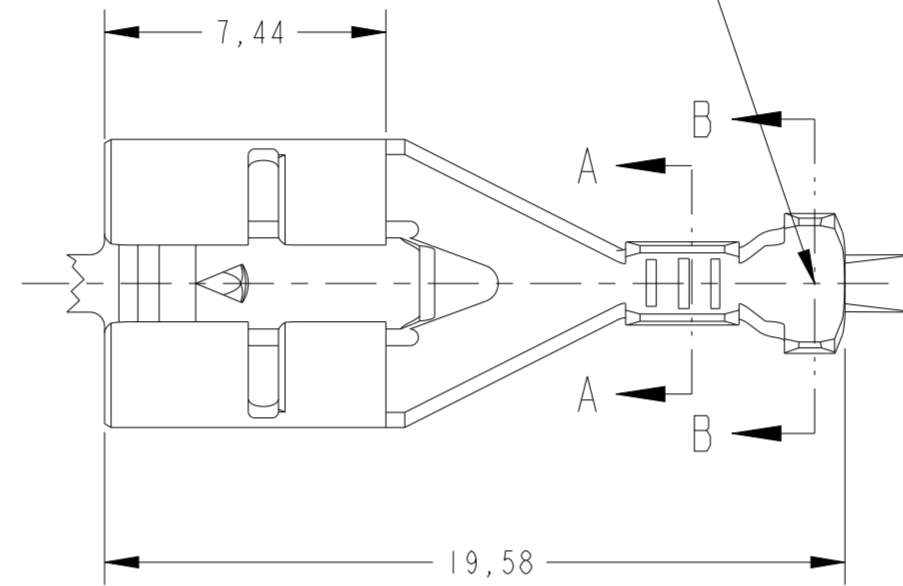


# SUGGESTED MATING TAB



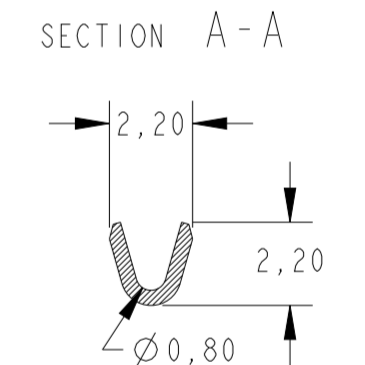
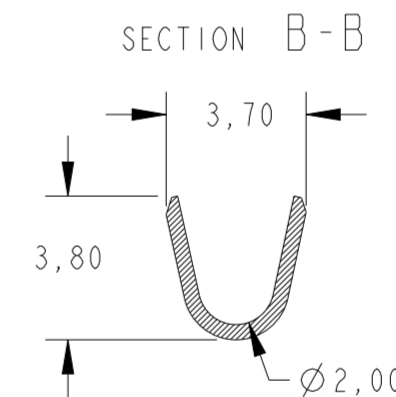
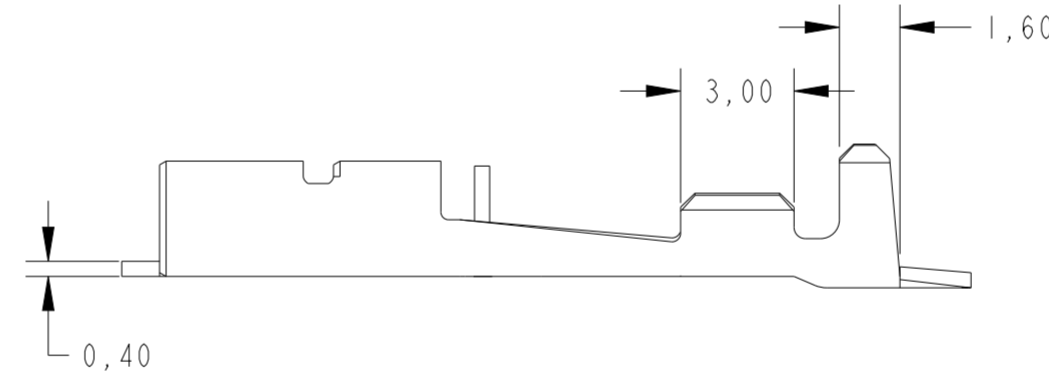
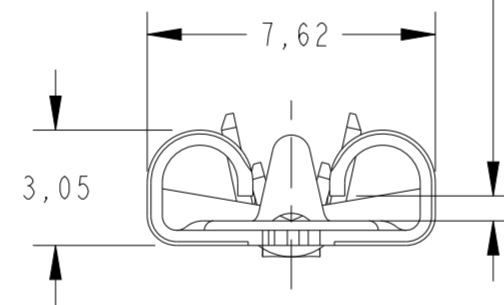
- 1 MATERIAL: 1/2 HARD BRASS OR NICKEL PLATED STEEL.
- 2 NO BURRS PERMISSIBLE AT HOLE.
- 3 MUST BE FLAT WITHIN 0.076 MM OVER THIS LENGHT.
- 4 TIN PLATING IS REQUIRED ON BRASS WHEN TERMINAL TEMPERATURE IS OVER 107°C.
- 5 HOLE MUST BE SYMMETRICAL ABOUT TAB CENTER WITHIN 0.076 MM.
- 6 TO BE USED ONLY WHEN SHOULDER IS ELIMINATED.

LOGOTIPO E CODIGO DO PAÍS PRODUTOR  
LOGO AND MANUFACTURING COUNTRY CODE.



1- WIRE RANGE 0,20 / 0,50 mm<sup>2</sup>.  
INSULATION DIA. RANGE Ø1,15 / 2,30 mm.

PARA LINGUETA ESPESSURA 0,8mm  
FOR 0,8mm TAB THK.



OBSOLETE	ESTANHADO/TINNED	LATÃO/BRASS	1380087-2
	NU/NONE	LATÃO/BRASS	1380087-1
	FINISH	MATERIAL	PART NUMBER

THIS DRAWING IS A CONTROLLED DOCUMENT.		DWN H.C. CANTERI 18AUG00	TE Connectivity	
		CHK W.L. STEFANI 18AUG00		
DIMENSIONS: mm		APVD - 18AUG00	NAME POSITIVE LOCK MKIII, L.I.F. .250 SERIES RECEPT.	
TOLERANCES UNLESS OTHERWISE SPECIFIED:		PRODUCT SPEC 108-37058	SIZE A2	
0 PLC ±		APPLICATION SPEC -	CAGE CODE 00779	DRAWING NO C-1380087
1 PLC ±		WEIGHT -	RESTRICTED TO -	REV C3
2 PLC ±0,25		CUSTOMER DRAWING	SCALE 5:1	SHEET OF
3 PLC ±				
4 PLC ±				
ANGLES ±1°				
FINISH SEE TABLE				