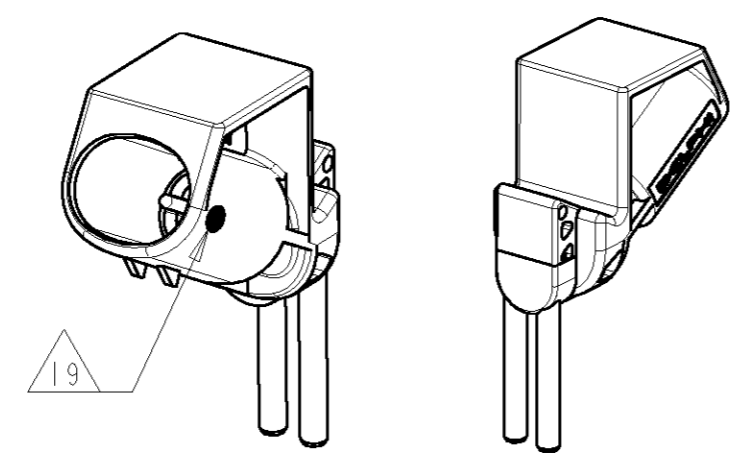
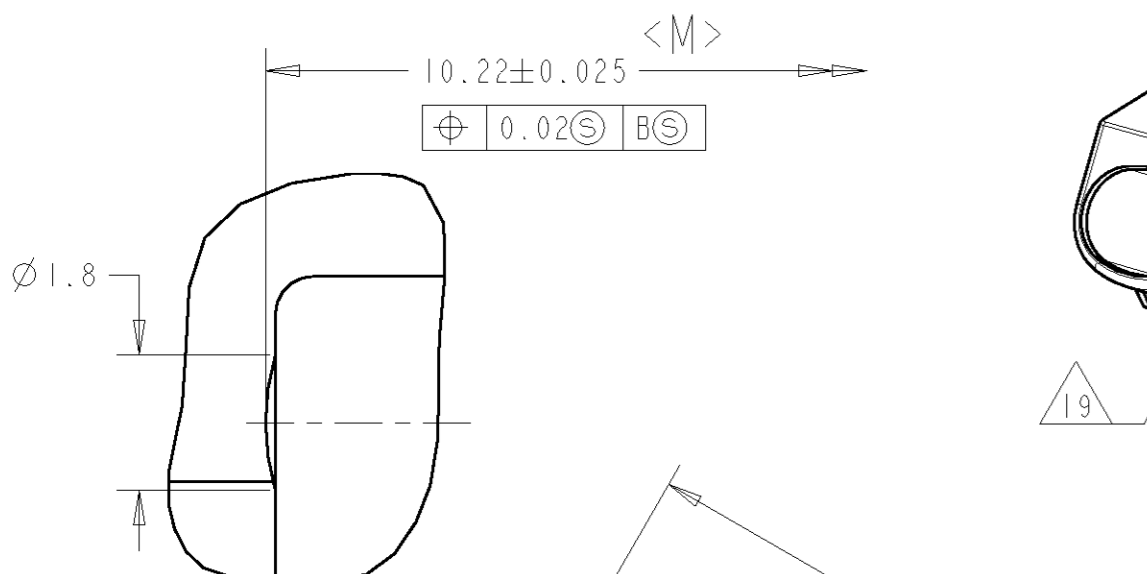
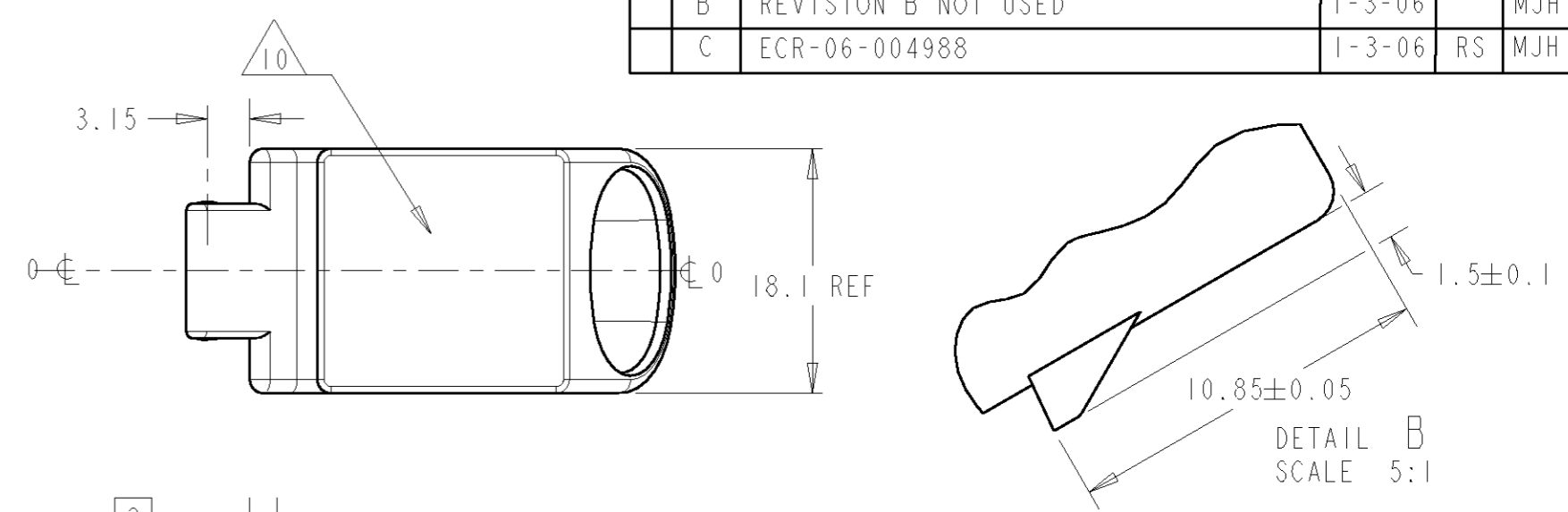


THIS DRAWING IS UNPUBLISHED. RELEASED FOR PUBLICATION 20-Mar-00  
 © COPYRIGHT 0 BY TYCO ELECTRONICS CORPORATION. ALL RIGHTS RESERVED.

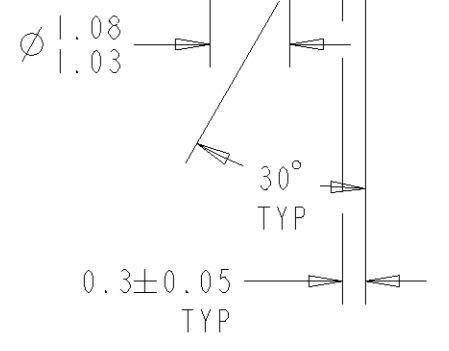
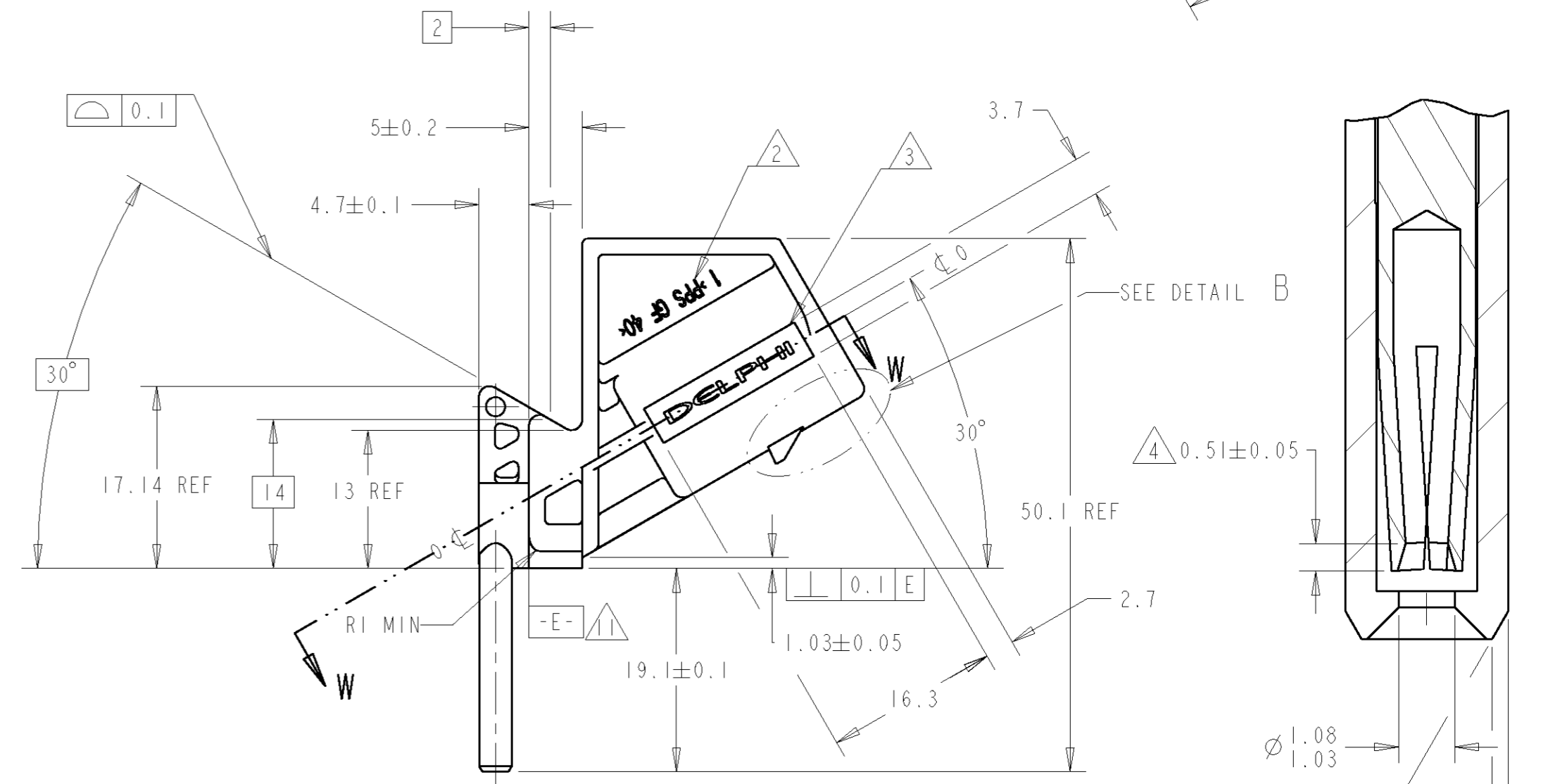
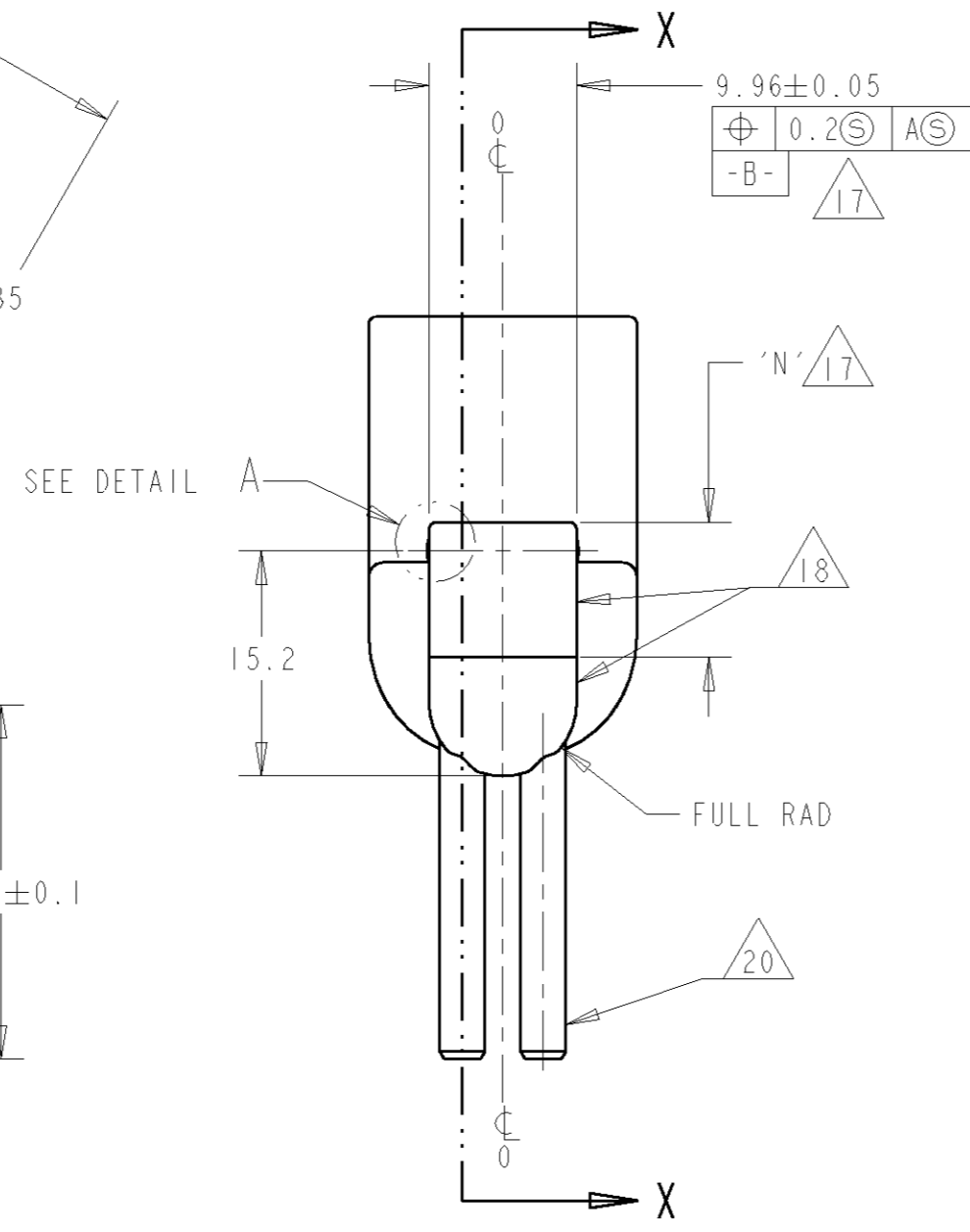
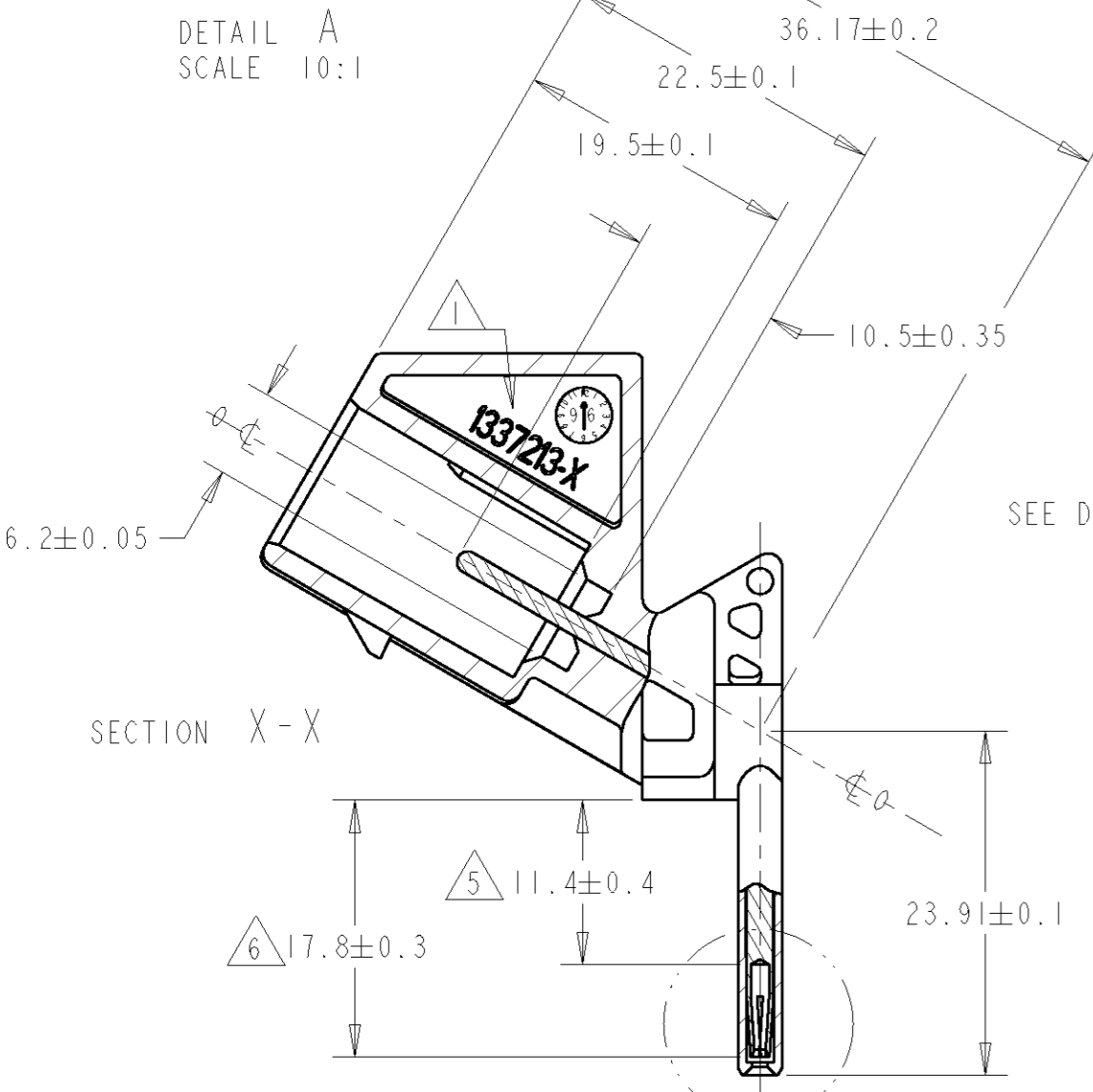
LOC		DIST		REVISIONS			
P	LTR	DESCRIPTION	DATE	DWN	APVD		
A	EB00-0155-01		23-5-01	RJC	MJW		
B	REVISION B NOT USED		1-3-06		MJH		
C	ECR-06-004988		1-3-06	RS	MJH		



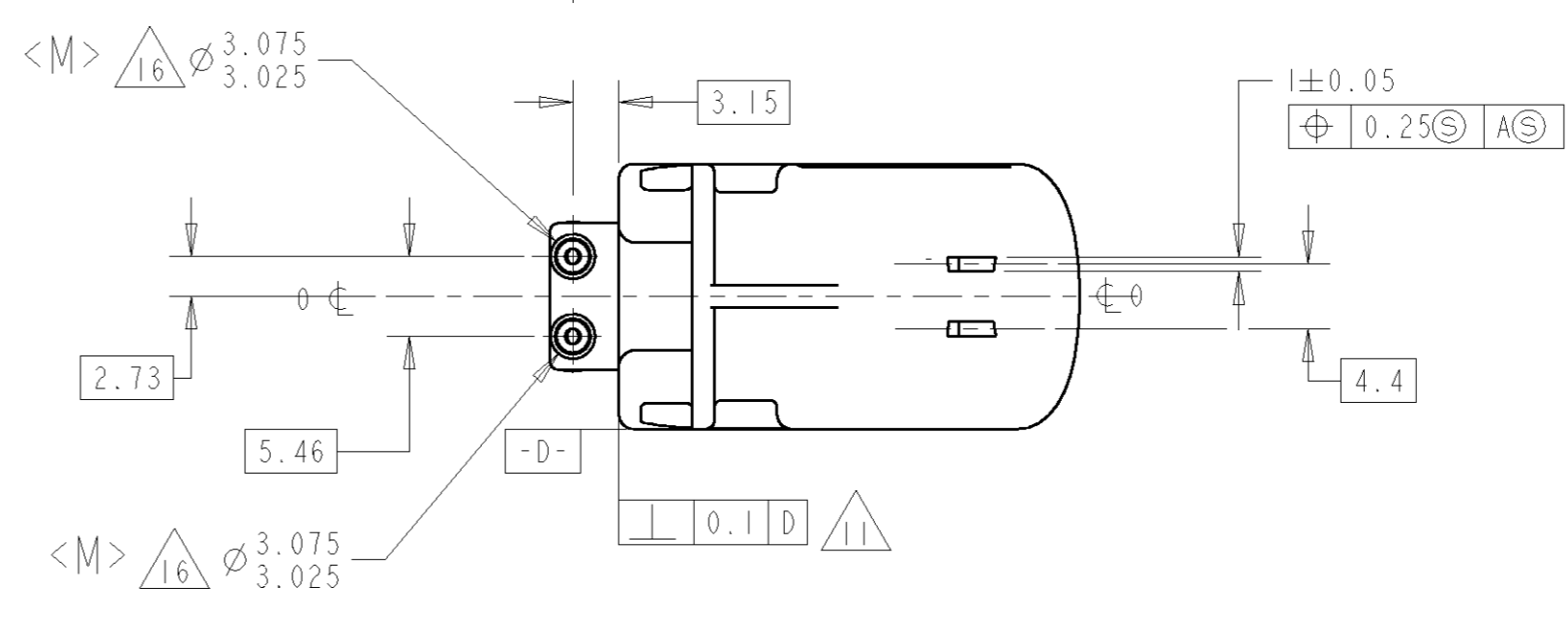
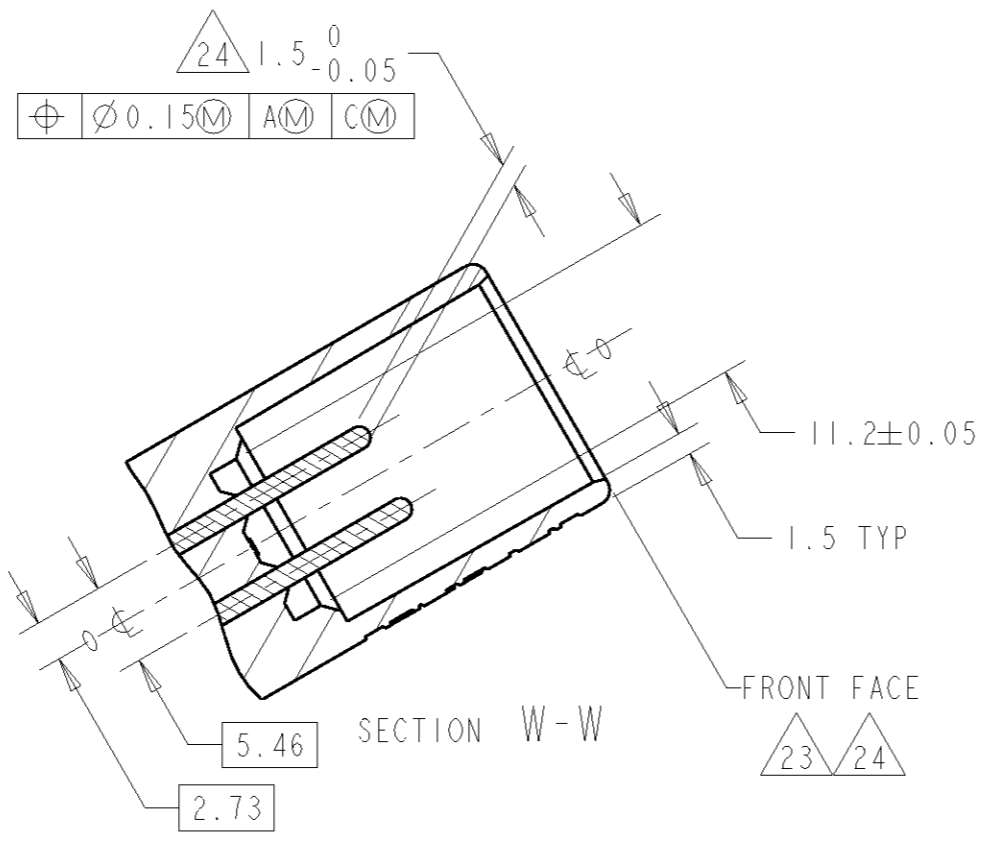
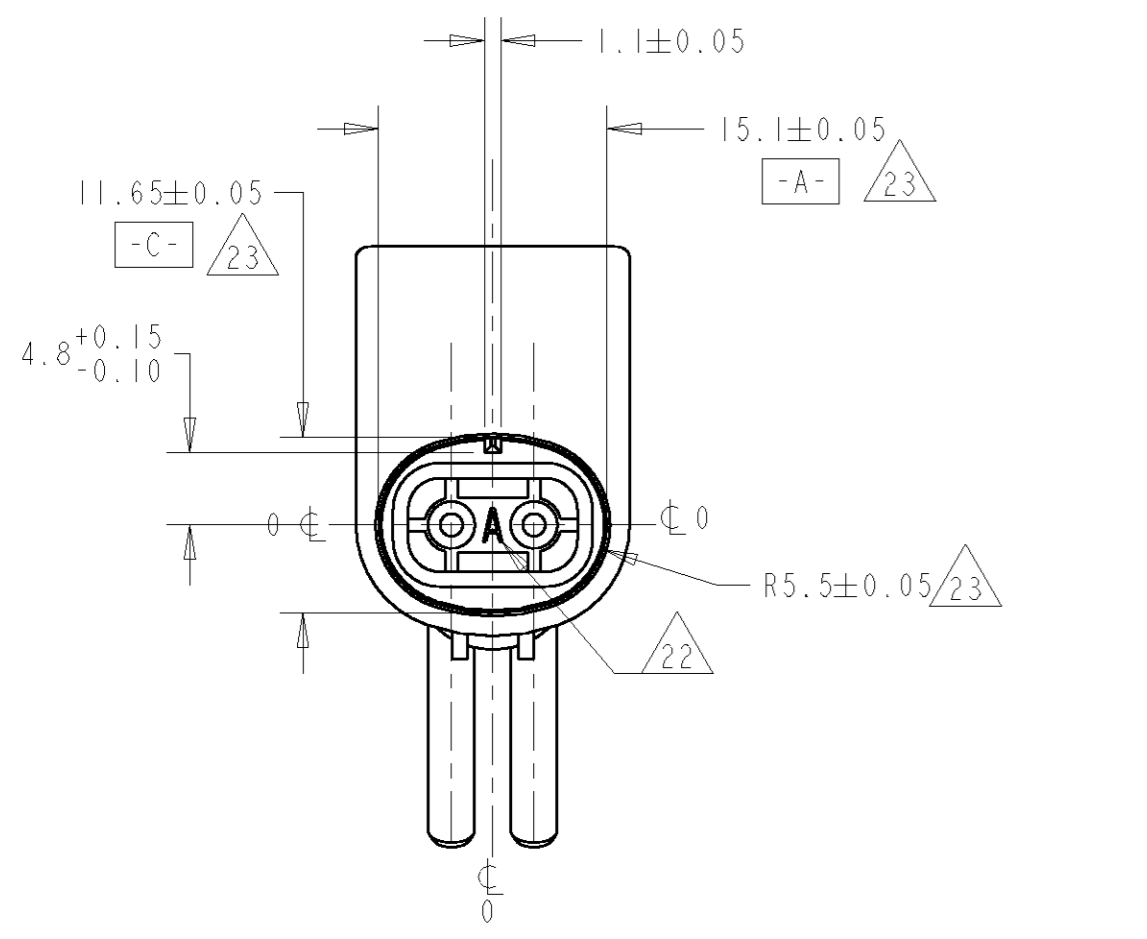
SCALE 1:1



DETAIL B  
SCALE 5:1



DETAIL A  
SCALE 10:1

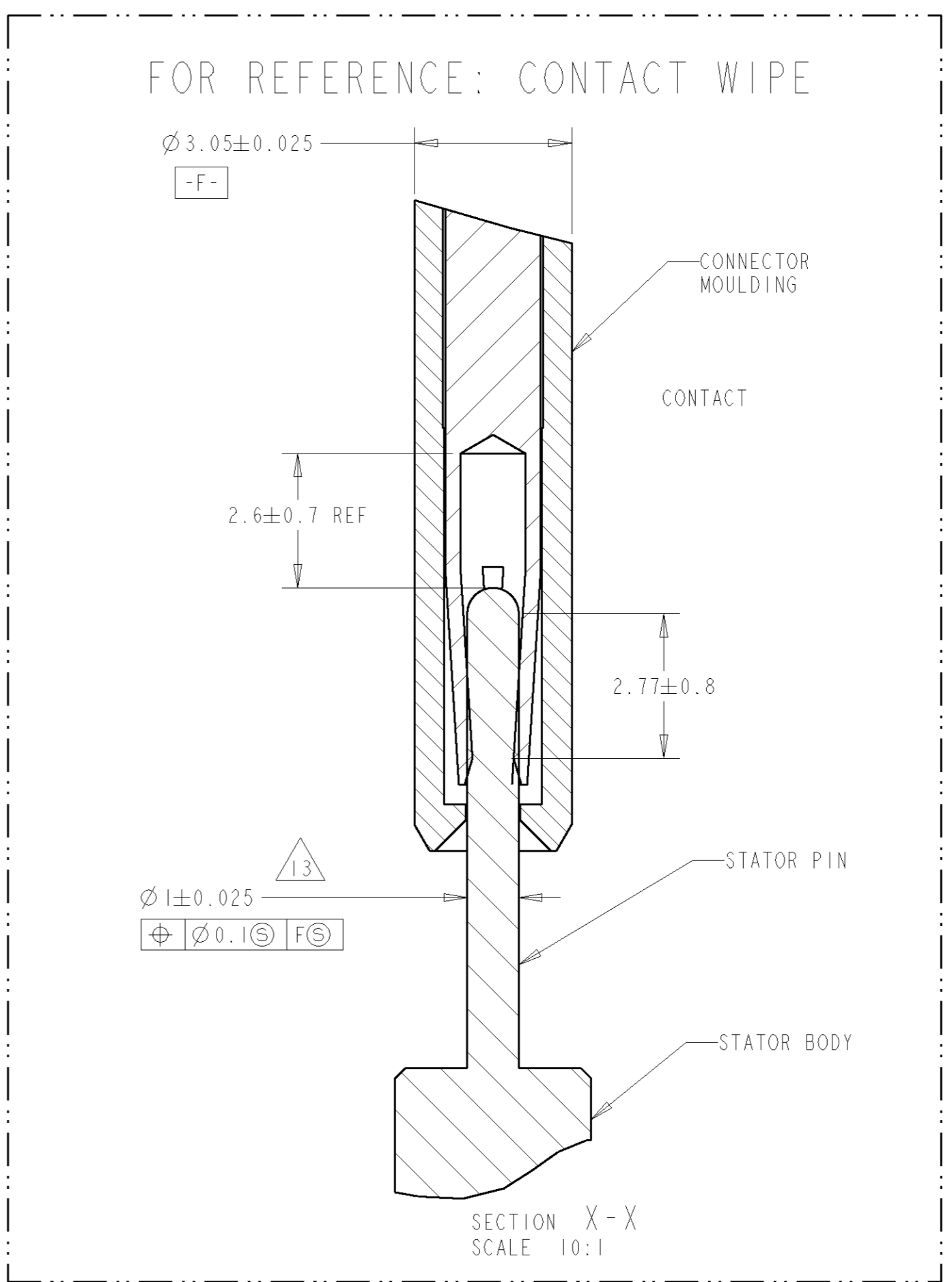
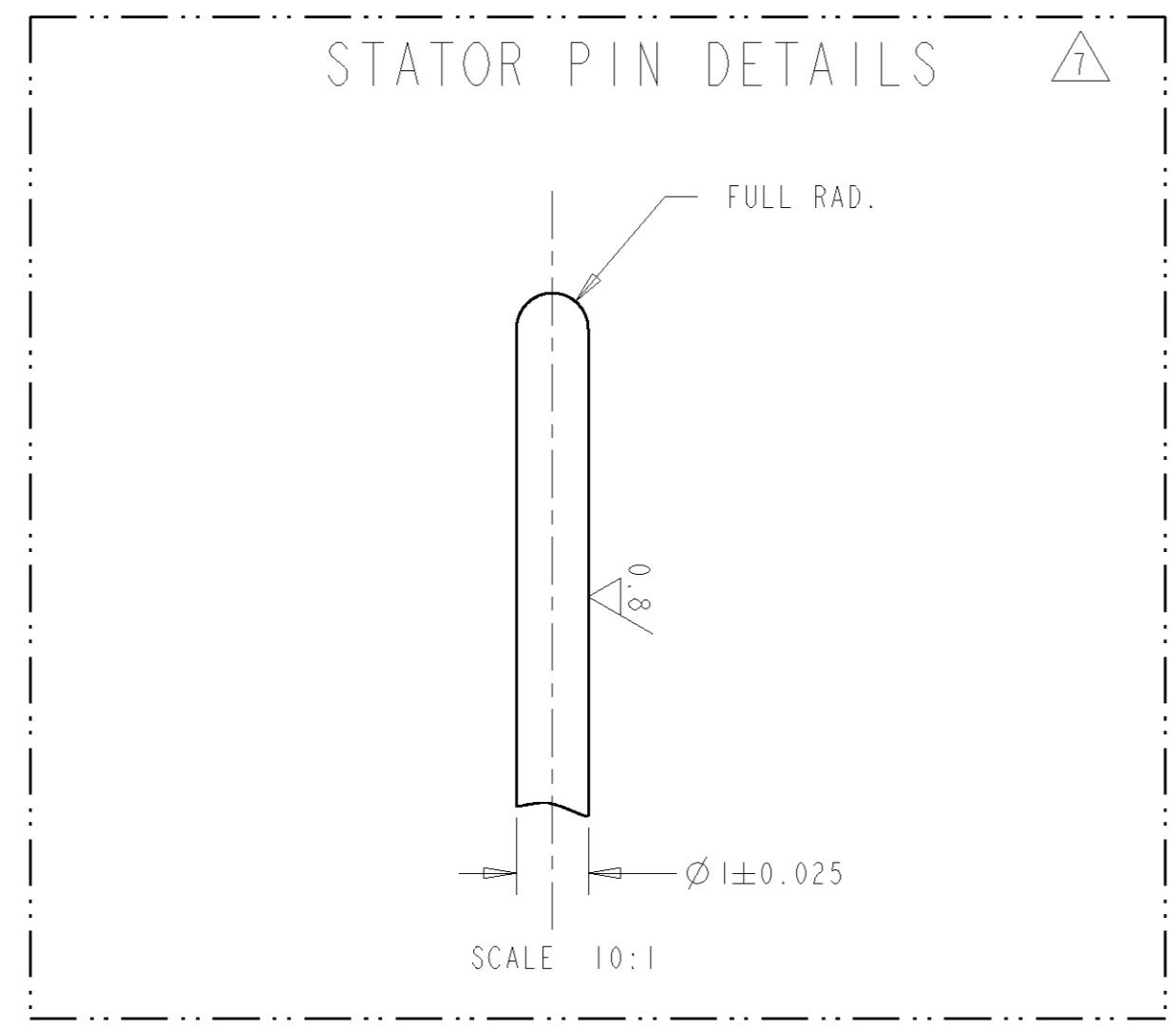


3	1337245-3	NATURAL COLOUR	1337213-3
LATCH OPTION	(MATE WITH)		PART NUMBER

THIS DRAWING IS A CONTROLLED DOCUMENT FOR TYCO ELECTRONICS CORPORATION. IT IS SUBJECT TO CHANGE AND THE CONTROLLING ENGINEERING ORGANIZATION SHOULD BE CONTACTED FOR THE LATEST REVISION.		DWN	20-Mar-00	NAME	
DIMENSIONS:		R. J. CHALLIS		EI DIRECT DIESEL INJECTOR CONNECTOR	
TOLERANCES UNLESS OTHERWISE SPECIFIED:		0. R. TERRY	05-04-00	SIZE	
0 PLC	±	M. WHELAN	20-Mar-00	CAGE CODE	DRAWING NO
1 PLC	±			A2	00779
2 PLC	±			RESTRICTED TO	
3 PLC	±			1337213	
4 PLC	±			CUSTOMER DRAWING	
ANGLES	±			SCALE	2:1
MATERIAL	FINISH	WEIGHT		SHEET	1 OF 2
8	9			REV	C
10	20				
21					

THIS DRAWING IS UNPUBLISHED. RELEASED FOR PUBLICATION 20-Mar-00. 19  
 © COPYRIGHT 19 0 BY AMP INCORPORATED. ALL RIGHTS RESERVED.

LOC		DIST		REVISIONS			
F	LTR	DATE	DWN	APVD			
-	-	SEE SHEET 1	-	-	-	-	



NOTES:

- 1 AMP PART NUMBER AND DATE CLOCK.
- 2 TOOL IMPRESSION NUMBER AND MATERIAL IDENTIFICATION.
- 3 CUSTOMER LOGO: PLATFORM RECESSED 0.2, LOGO RAISED 0.2, LOGO TO DELPHI SPEC PS-DDS-0009
- 4 DIMENSION TO CONTACT POINT.
- 5 DIMENSION TO TOP OF PIN BORE.
- 6 DIMENSION TO END OF CONTACT.
- 7 MATERIAL SPECIFICATION FOR STATOR PINS: NICKEL SILVER, NS113 (C76300) OR NI4 (C79200): NS113 RECOMMENDED.
- 8 HEADER PIN / CONTACT MATERIAL: NICKEL SILVER, NS113 (C76300).
- 9 MOULDING MATERIAL: P.P.S. GF 40, FORTRON 1140L4
- 10 NO SPLIT LINE ON THIS SURFACE & SURFACE FINISH: Ra 1.6
- 11 THESE FACES ARE TO REMAIN FREE FROM DRAFT ANGLES, 2 PLACES.
- 12 GENERAL TOLERANCES: LINEAR: ±0.2, ANGULAR: ±1°
- 13 MATING PIN TO BE IN POSITION SHOWN RELATIVE TO CONTACT PRIOR TO MATING ON ASSEMBLY.
- 14 PRODUCT TO CONFORM TO DELPHI CLEANLINESS SPECIFICATION W1725. (FOR REFERENCE: SURFACE AREA = 5569 MM<sup>2</sup>). PINS AUDITED PRIOR TO ASSEMBLY AT TYCO TO A MAXIMUM METALLIC PARTICLE SIZE OF 500 X 250 X 100 MICRONS (SAMPLE SIZE 20 TERMINALS).
- 15 ALL DIMENSIONS MARKED <M> ARE SIGNIFICANT CHARACTERISTICS.
- 16 AT ROOT:  $\oplus \varnothing 0.12 \text{ (S) } \text{ (B) } \text{ (E) } \text{ (S)}$   
 AT TIP:  $\oplus 0.6 \text{ (S) } \text{ (B) } \text{ (S)}$   
 $\oplus 1 \text{ (S) } \text{ (E) } \text{ (S)}$   
 <M> APPLIES TO POSITION ONLY ON THESE DIMENSIONS.
- 17 MEASURED ON AREA SHOWN BY DIMENSION 'N'.

- 18 INSULATION TUBE MOULDING 0/0.05 SUBFLUSH FROM OVERMOULD PORTION OF BODY (2 PLACES).
- 19 INK DOT TO INDICATE COMPLETION OF PINS PRESENCE TEST (∅3.0).
- 20 SURFACE FINISH ON INSULATION TUBES: Ra 0.8
- 21 GENERAL FINISH ON EXTERNAL SURFACES: FINE SPARKED.
- 22 SHUTTLE IDENTIFICATION CODING.
- 23 MEASURED 3.4 MM FROM FRONT FACE (CORRESPONDS TO SEAL COMPRESSION REGION ON MATING HARNESS CONNECTOR 1337245-3).
- 24 MEASURE PINS AT TIPS, 14.0 MM FROM FRONT FACE. (FOR CMM REFERENCE, SET DATUMS -A- & -C- 3.4 MM AND 16 MM FROM FRONT FACE).
- 25 DELPHI LIFETIME OF MOULD CONCESSION 4912 TO APPLY.

THIS DRAWING IS A CONTROLLED DOCUMENT FOR AMP INCORPORATED. IT IS SUBJECT TO CHANGE AND THE CONTROLLING ENGINEERING ORGANIZATION SHOULD BE CONTACTED FOR THE LATEST REVISION.		DWN R. J. CHALLIS 20Mar-00	SEE SHEET 1 PART NUMBER	
DIMENSIONS:		CHK D. R. TERRY 05-04-00	NAME <b>AMP</b>	
TOLERANCES UNLESS OTHERWISE SPECIFIED:		APVD M. WHELAN 20/3/00	EI DIRECT DIESEL INJECTOR CONNECTOR	
0 PLC ± 1 PLC ± 2 PLC ± 3 PLC ± 4 PLC ±		PRODUCT SPEC -	SIZE A2	
ANGLES ±12		APPLICATION SPEC -	CAGE CODE 00779	DRAWING NO 1337213
MATERIAL -	FINISH -	WEIGHT -	RESTRICTED TO	
CUSTOMER DRAWING			SCALE 2:1	SHEET 2 OF 2