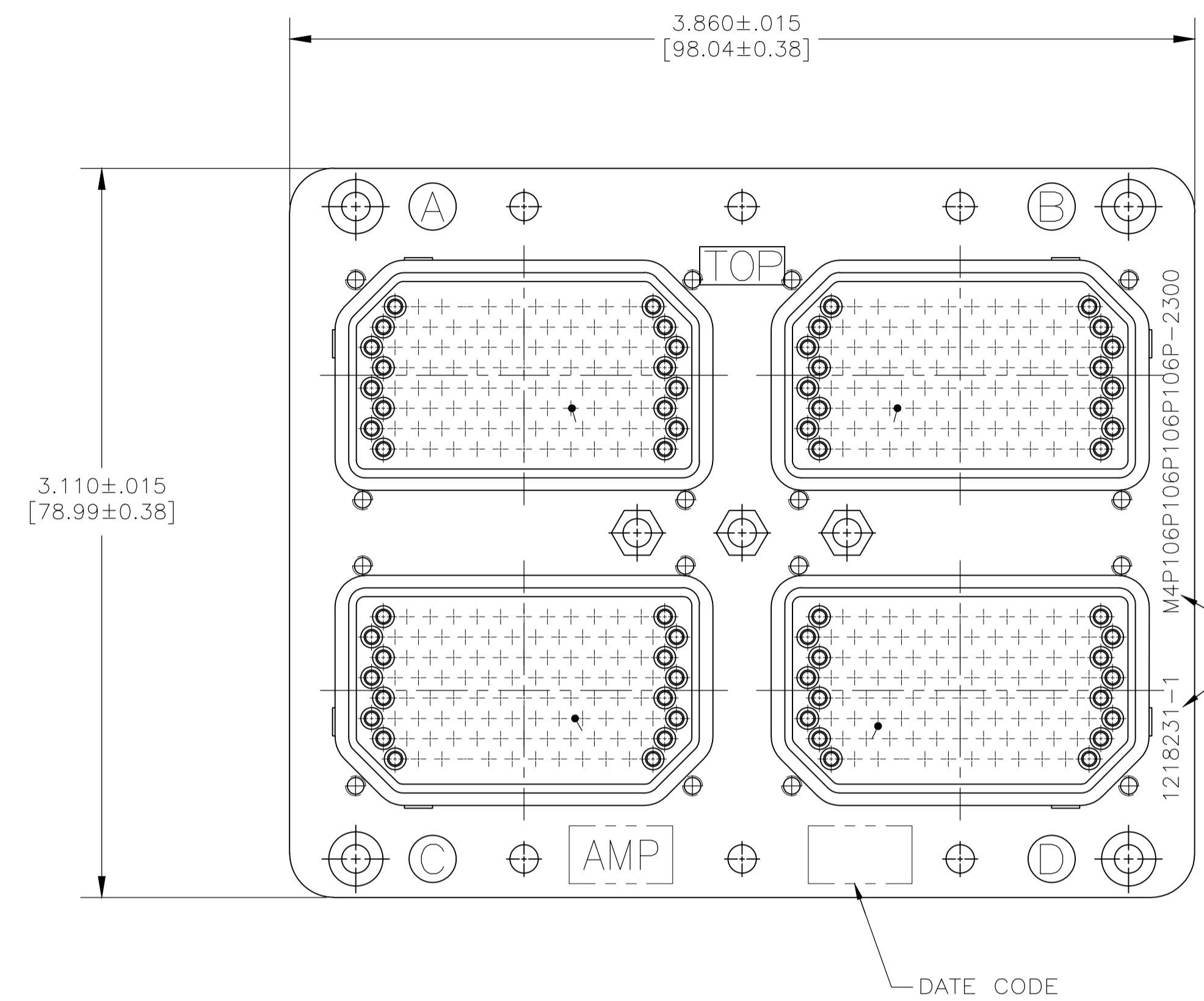


REVISIONS					
P	LTR	DESCRIPTION	DATE	DNW	APVD
A		RELEASED	3-12-20	CT	RL

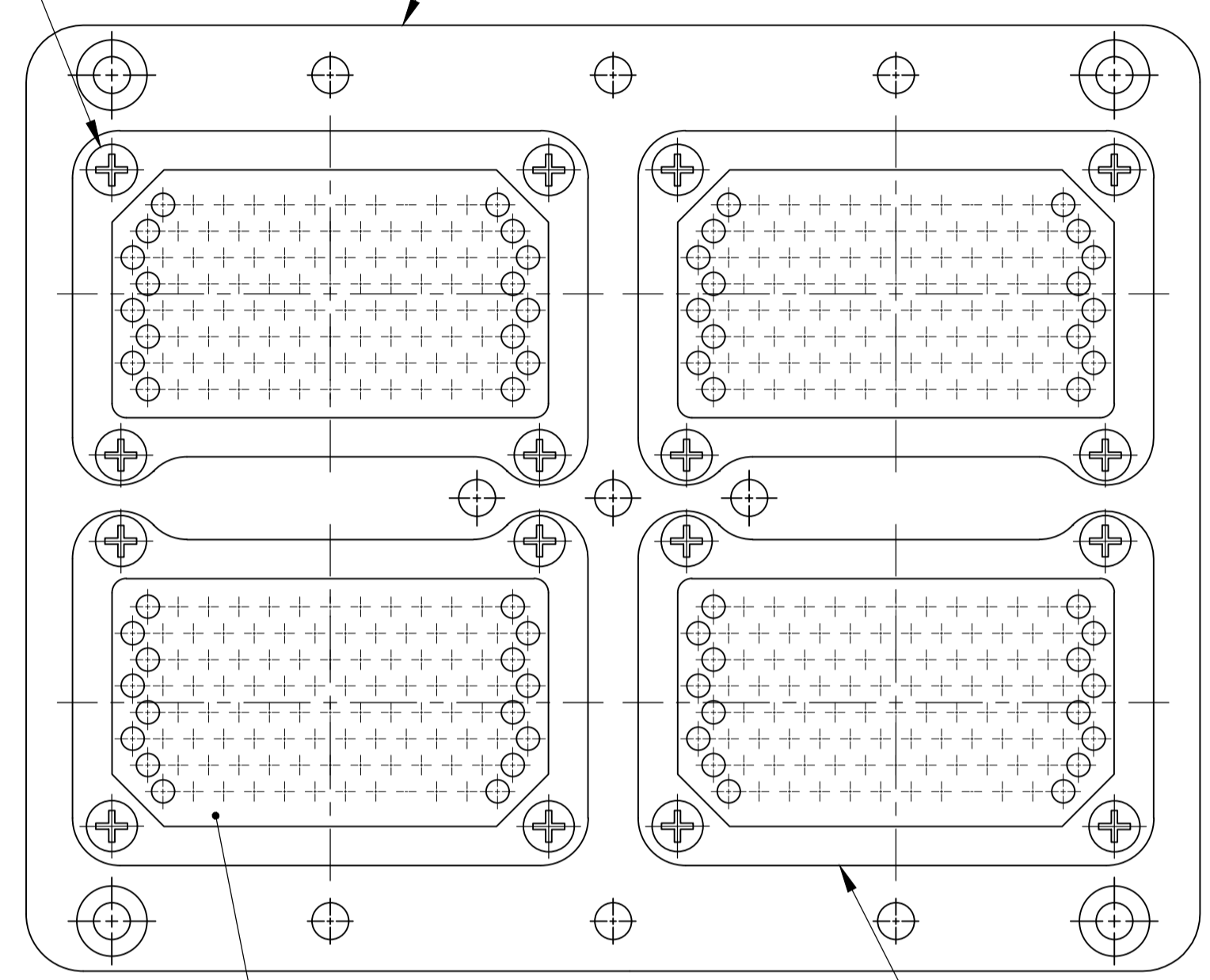
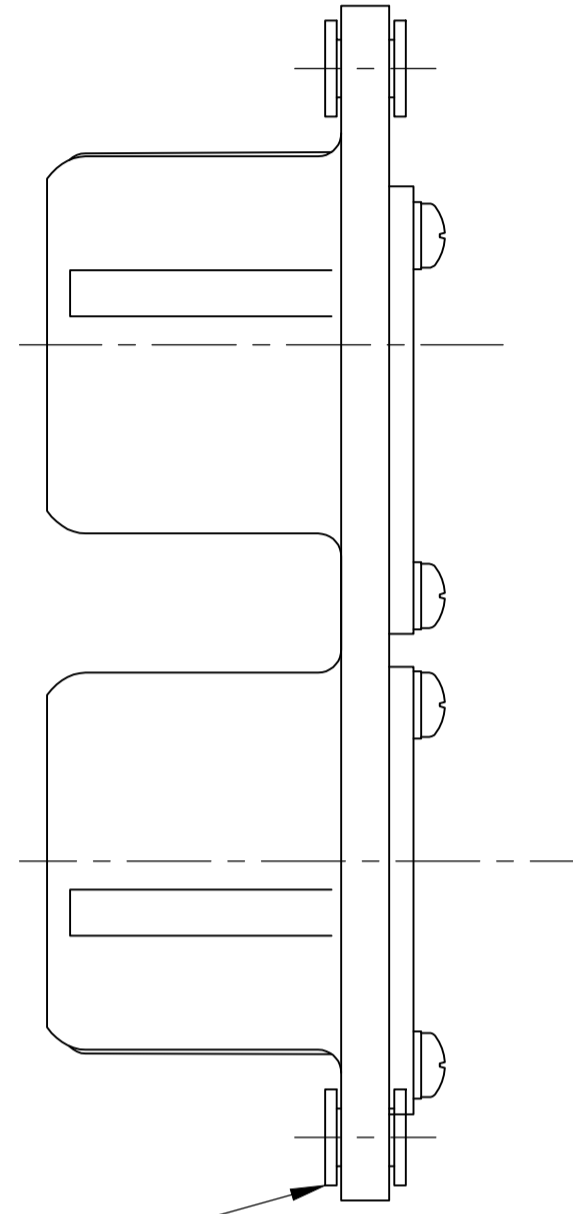


TE PART NO. &  
DESCRIPTIVE P/N MARKED  
IN THIS AREA

FLOAT BUSHING; QTY = 4  
I.D. DIA. .118-.115 [3.00-2.92]

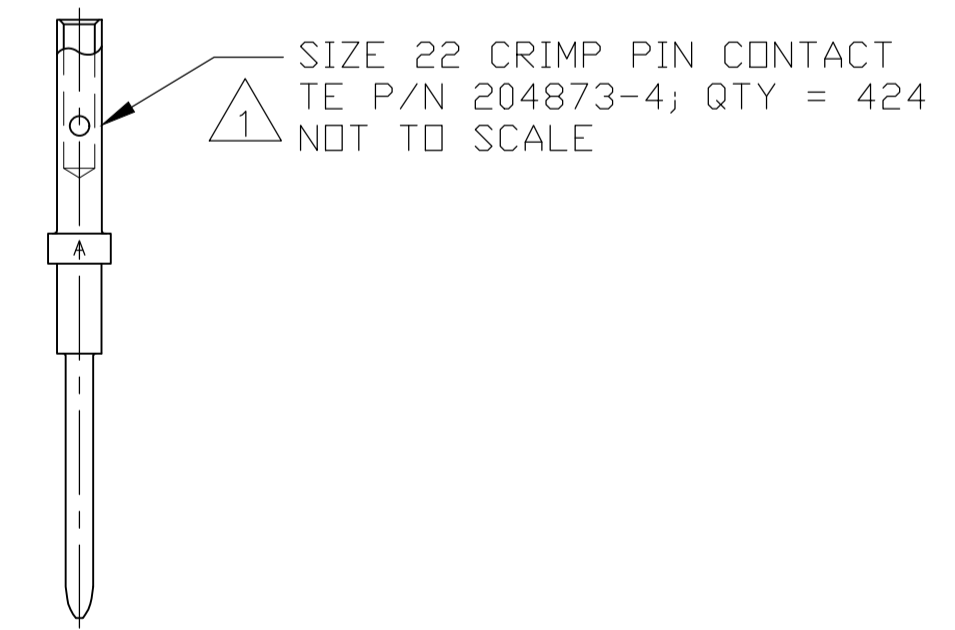
SCREWS & LOCKWASHERS  
MAT'L: STAINLESS STEEL  
FINISH: PASSIVATED  
QTY = 16

SHELL  
MAT'L: ALUMINUM ALLOY  
FINISH: CADMIUM PLATED, YELLOW CHROMATE



106 POSITION PIN  
INSERT; QTY = 4  
MAT'L: EPOXY MOLDING COMPOUND

RETAINER PLATE; QTY = 4  
MAT'L: ALUMINUM ALLOY  
FINISH: BLUE ANODIZED



SIZE 22 CRIMP PIN CONTACT  
TE P/N 204873-4; QTY = 424  
NOT TO SCALE

CONTACTS ARE PACKAGED SEPARATELY AND SHIPPED WITH CONNECTOR.

"00"	1218231-1
KEYING POSITION	PART NUMBER

THIS DRAWING IS A CONTROLLED DOCUMENT.		DIN C.C.THOMAS 3-12-20	TE Connectivity	
DIMENSIONS: INCHES		CHK R.LACUESTA 3-12-20	NAME ASSY, ARINC 404, M4P106P106P106P-2300 (200)	
TOLERANCES UNLESS OTHERWISE SPECIFIED:		APVD R.LACUESTA 3-12-20	PRODUCT SPEC	
0. PLC ± -		APPLICATION SPEC		
1. PLC ± -		SIZE CAGE CODE DRAWING NO. RESTRICTED TO		
2. PLC ± -		WEIGHT 0.000000 A1 00779 C=1218231		
3. PLC ± -		CUSTOMER DRAWING SCALE 2:1 SHEET 1 OF 1 REV A		
4. PLC ± -				
ANGLES ± -				
FINISH -				