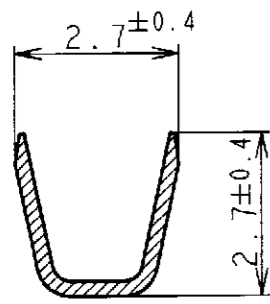
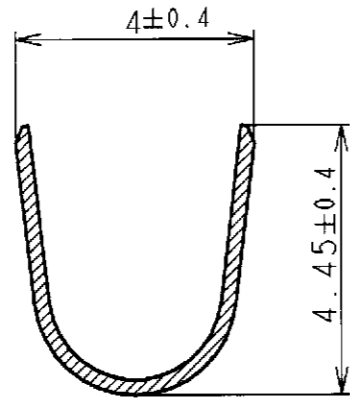


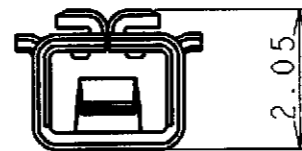
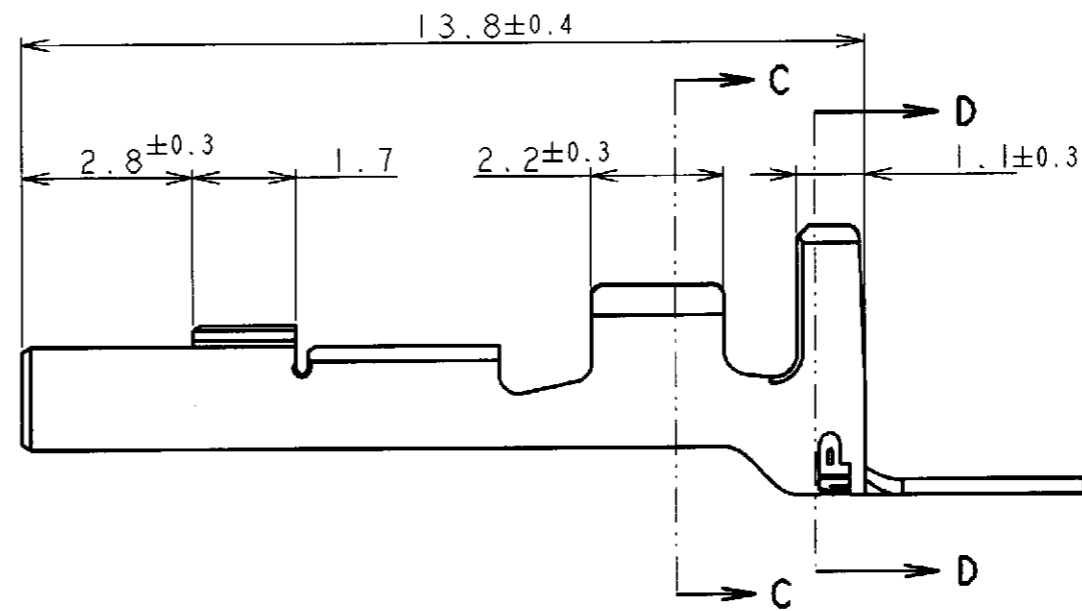
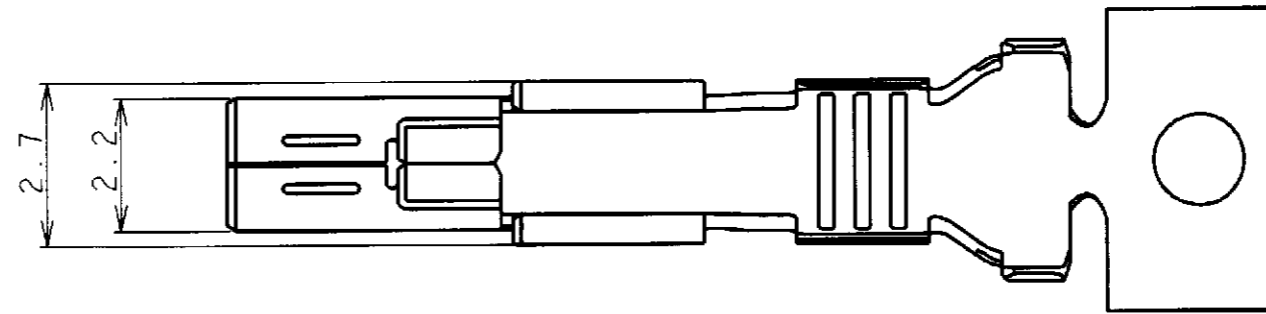
LOC	DIST	REVISIONS				
P	LTR	DESCRIPTION	ECN	DATE	DWN	APVD
-	-	A	REVISED	FJ00-2109-98	5.NOV'98	CWL



SECT 断面 C-C



SECT 断面 D-D



NOTES:
 1. APPLICABLE SPECIFICATIONS:
 PRODUCT SPEC: 108-5616
 APPLICATION SPEC: 114-5256

1123907-1
 PART NUMBER

THIS DRAWING IS A CONTROLLED DOCUMENT FOR AMP INCORPORATED. IT IS SUBJECT TO CHANGE AND THE CONTROLLING ENGINEERING ORGANIZATION SHOULD BE CONTACTED FOR THE LATEST REVISION.		DWN W. L. CHOO 10. JUN '98	WIRE RANGE 結合電線断面積 0.51~1.38mm ² (AWG #20~#16)		INSULATION DIA 被覆外径 ∅1.8~3.1mm
DIMENSIONS: 単位: 英 mm		CHK J. TANIGAWA 11. JUN '98	AMP 日本エー・エム・ピー株式会社 Kawasaki, Japan		
TOLERANCES UNLESS OTHERWISE SPECIFIED: 一般公差 10 > : ±0.2 30 > : ±0.25 100 > : ±0.3 ANGLE : ±3°		APVD S. Kubouchi 18. NOV '98	NAME POWER RECEPTACLE CONTACT AMP MINI CT LATTICE CONNECTOR		
MATERIAL 材料 COPPER ALLOY		FINISH 仕上 PRE-TIN	PRODUCT SPEC 108-5616	SIZE A3	CAGE CODE 00779
			APPLICATION SPEC 取付適用規格 114-5256	DRAWING NO C-1123907	RESTRICTED TO
			WEIGHT -	SCALE 尺度 9:1	SHEET 1 OF 1
			CUSTOMER DRAWING	REV A	