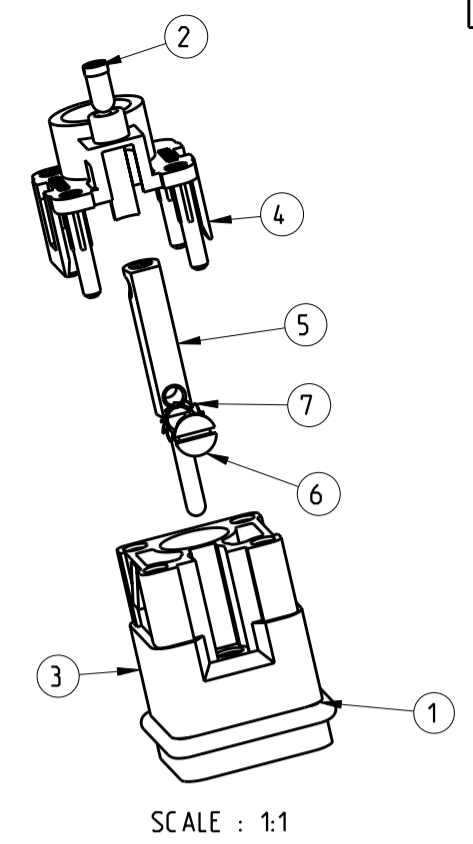
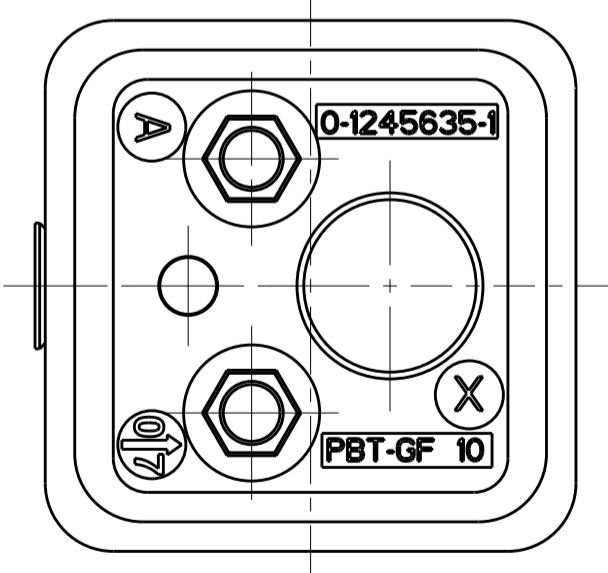
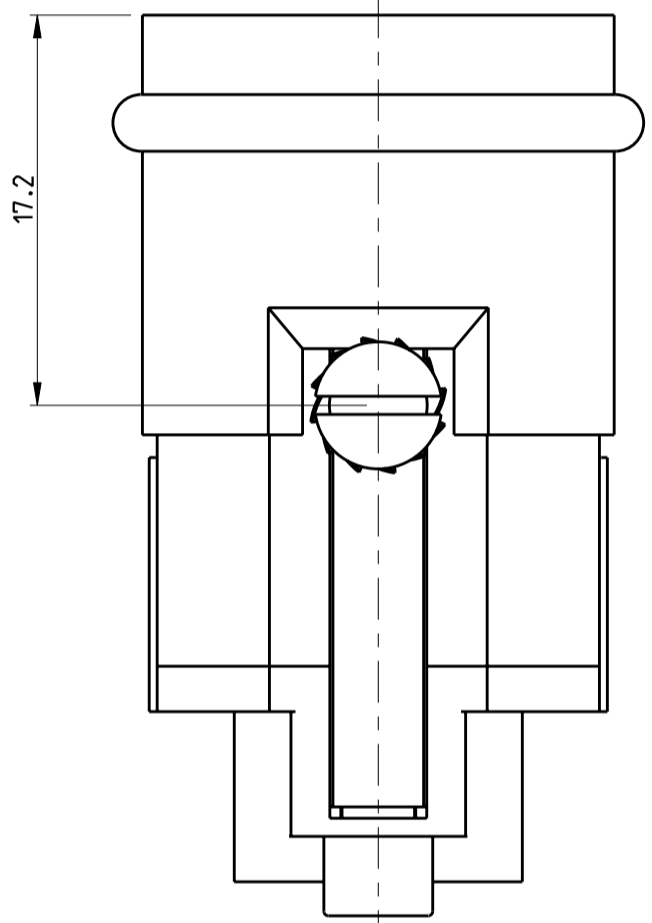
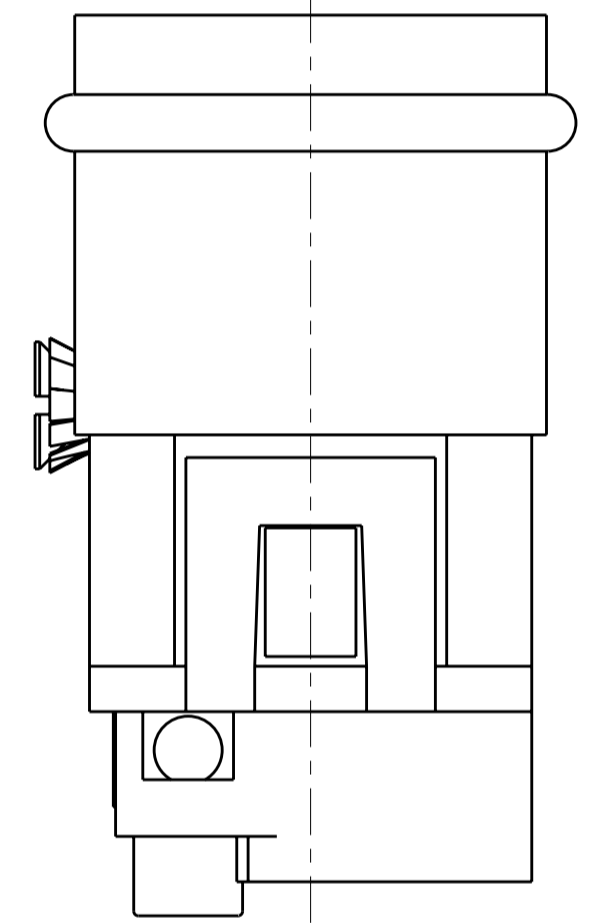
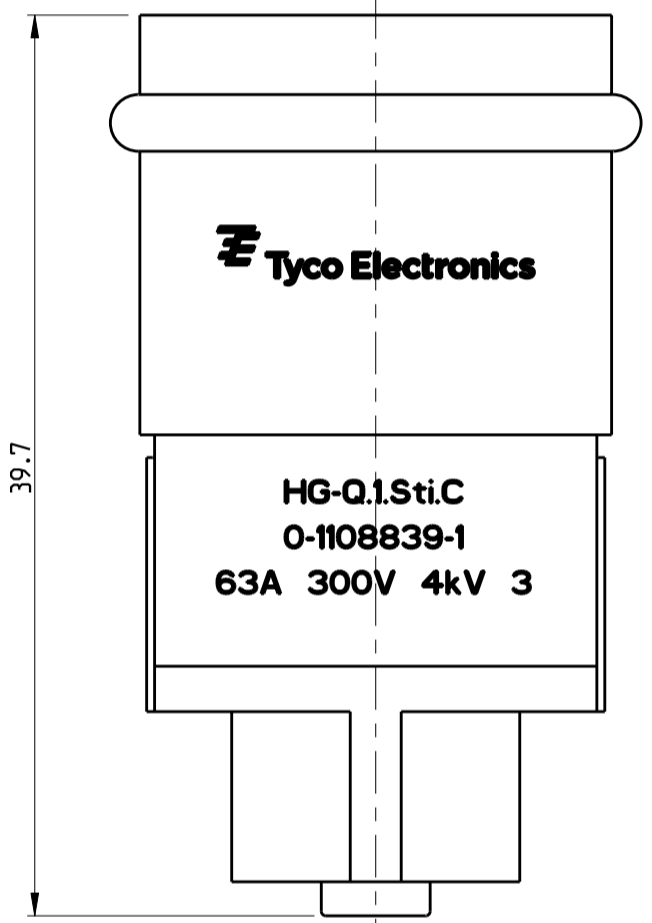
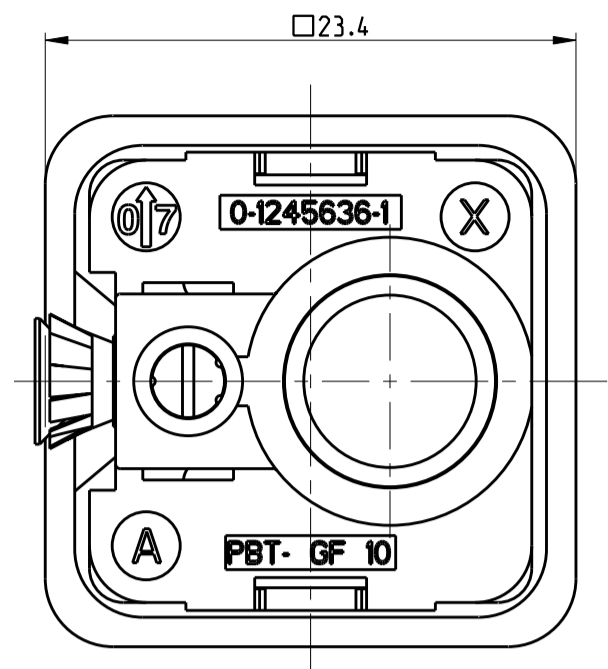
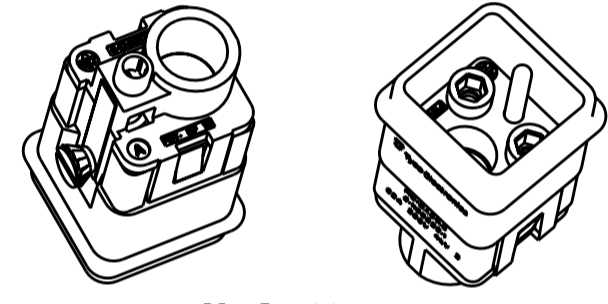


THIS DRAWING IS UNPUBLISHED. RELEASED FOR PUBLICATION  
 © COPYRIGHT BY TYCO ELECTRONICS CORPORATION. ALL RIGHTS RESERVED.

LOC		DIST		REVISIONS			
P	LTR	DESCRIPTION	DATE	DWN	APVD		
A	I	-					
B1		Refer ECR 08-012339	15-May-08	SP	TS		



SCALE : 1:1



SCALE : 1:1

PN 0-1 AS SHOWN

- NOTES:
- SUITABLE CRIMP CONTACTS: HSS SERIES  
DRAWING NUMBER : 1110996
  - SUITABLE HOODS / HOUSINGS :  
SERIES HA3 SIZE 1  
CUSTOMER DRAWING: 1106405/1102105
  - SUITABLE EXTRACTION TOOL: 0-1102855-5
  - STANDARDS:  
DIN EN 61984; DIN EN 60664-1
  - PACKAGING QTY: 10 PCS IN A BOX

QTY	PART NO	DESCRIPTION	MATERIAL	SURFACE/COLOR	ITEM
1	0-1110431-1	SEAL	VITON		1
1	0-1110998-1	CONTACT SCREW	CuZn40Pb3	NICKEL PLATED	2
1	0-1245635-1	BRAKE SYSTEM CONNECTOR INSERT	PBT GF-10%	LIGHT GREY	3
1	0-1245636-1	BRAKE SYSTEM CONNECTOR COVER	PBT GF-10%	LIGHT GREY	4
1	0-1245637-2	PIN CONTACT SCREW STYLE	CuZnPb3F44	1-2 μm Cu/2-4 μm Ag+Passivation	5
1	1-1110027-1	SCREW	STEEL	ZINC PLATED	6
1	1-1110121-7	WASHER, SERRATED LOCK	STEEL	ZINC PLATED	7
0-1	PART NO	DESCRIPTION	MATERIAL	SURFACE/COLOR	ITEM

REVISION OF EACH ASSEMBLY NO ( WHEN BLANK, USE DRG. REVISION )  
 PART LIST  
 HSS.1.Pos.Sti.C 63A 300V 4kV 3

THIS DRAWING IS A CONTROLLED DOCUMENT FOR TYCO ELECTRONICS CORPORATION. IT IS SUBJECT TO CHANGE AND THE CONTROLLING ENGINEERING ORGANIZATION SHOULD BE CONTACTED FOR THE LATEST REVISION.		DWN S.Prakash 30-Aug-2007	Tyco Electronics Tyco Electronics AMP GmbH D-53819, Neunkirchen, Germany	
DIMENSIONS: mm		CHK S.Prakash 30-Aug-2007	NAME Pin housing Assembly Brake System Connector, HG-Q.1.Sti.C	
TOLERANCES UNLESS OTHERWISE SPECIFIED: mm ISO 2768 m, ISO 2768 - m - 4 m, DIM 9001 - 10		APVD T.Schnurleit 30-Aug-2007	PRODUCT SPEC 108-74016	
0 PLC ±0.5 1 PLC ±0.33 2 PLC ±0.33 3 PLC ±0.013 4 PLC ±0.0001		APPLICATION SPEC 114-74013		
MATERIAL FINISH		WEIGHT -		
6		7		
CUSTOMER DRAWING		SCALE 3:1	SHEET 1 OF 1	REV B1