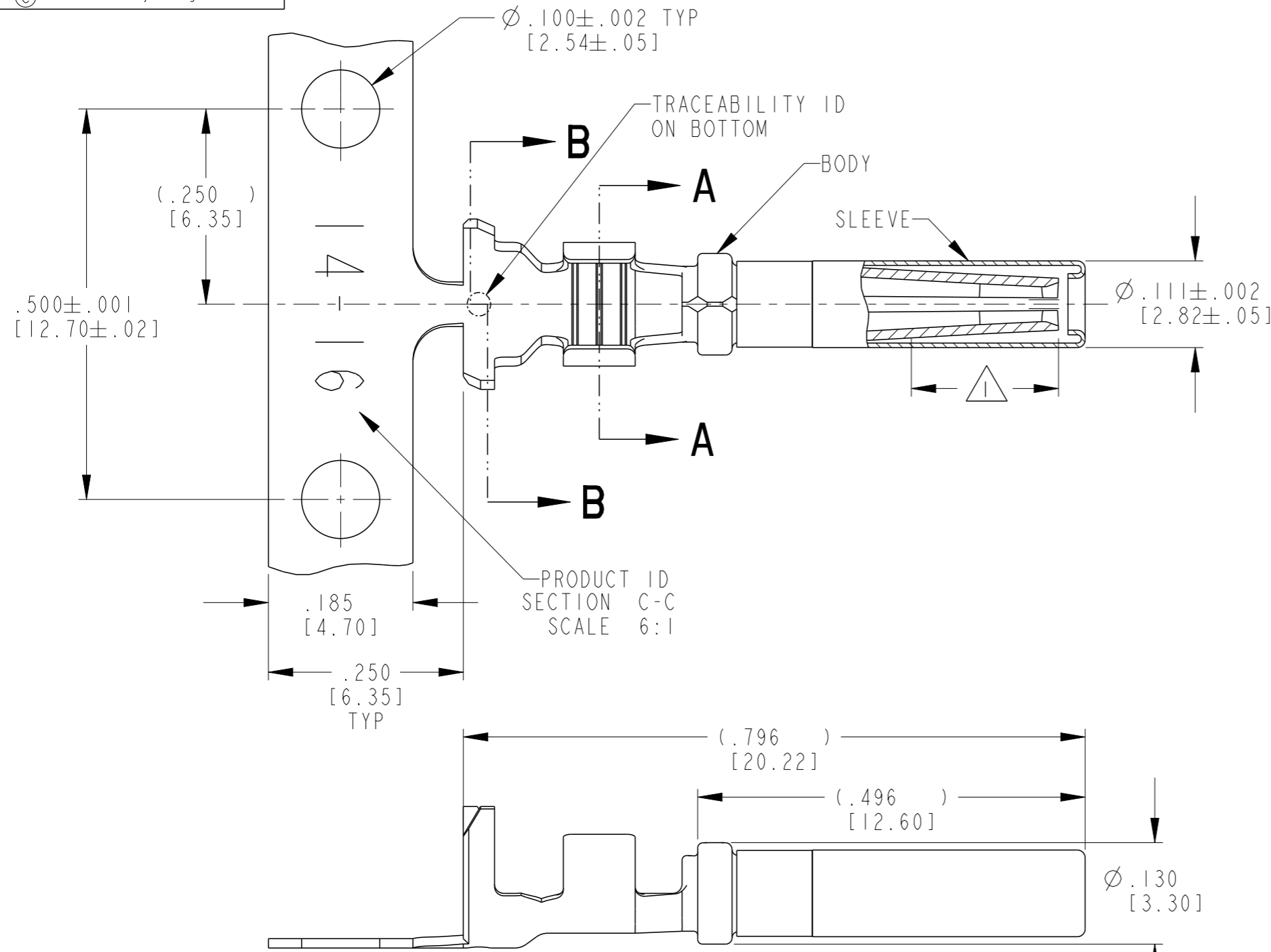
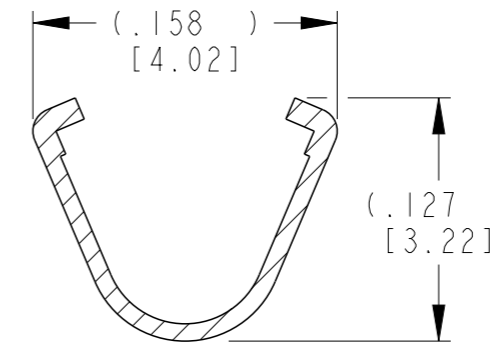
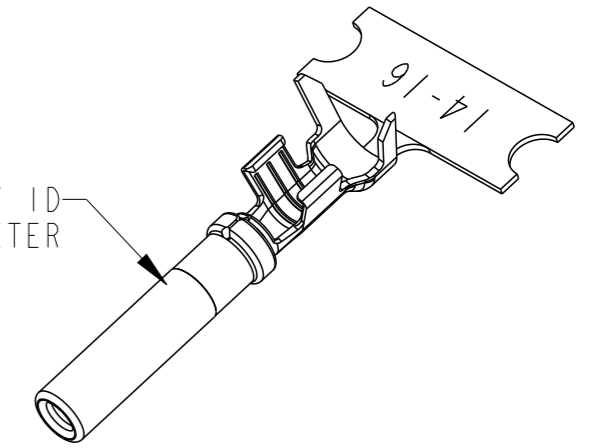


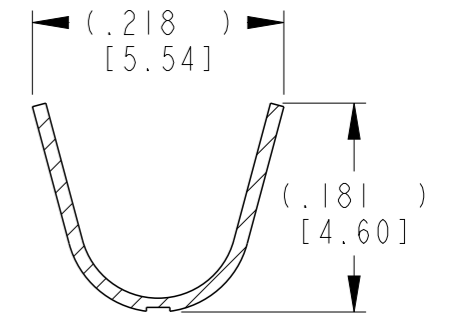
P	LTR	DESCRIPTION	DATE	DWN	APVD
A		REVISED PER E.O. P17006	08DEC2000		RDR
B		REVISED PER E.O. P19555	11JUL2007		RDR
C		REVISED PER E.O. P20396	25JUN2010		RDR
CI		REVISED PER PCN-22-157823	12OCT2022	SP	DM



OPTIONAL TRACEABILITY ID LOCATED ON DIAMETER



SECTION A-A  
WIRE BARREL



SECTION B-B  
INSULATION BARREL

TE INTERNAL PN	DEUTSCH PN	PLATING
SUPERSEDED 1062-14-1022	1062-14-1022	Ni/Cu overall, Sn/Ni/Cu Wire Barrel
SUPERSEDED 1062-14-1077	1062-14-1077	Sn/Ni/Cu overall
1062-14-1088	1062-14-1088	Selective Pd-Ni, Au/Ni/Cu overall

3 MATERIAL:  
BODY: .012 [0.30] THICK COPPER ALLOY  
SLEEVE: STAINLESS STEEL

2. WIRE RANGE: 18 AWG TO 14 AWG [0.75-2.0 mm<sup>2</sup>]  
INSULATION RANGE:  $\phi$ .095-.150 [ $\phi$ 2.41-3.81]

1 PALLADIUM-NICKEL PLATED REGION.

NOTES: UNLESS OTHERWISE SPECIFIED

THIS DRAWING IS A CONTROLLED DOCUMENT.		DWN J. APOSTOL 03DEC2009	<b>TE</b> TE Connectivity	
DIMENSIONS: INCHES [mm]		CHK D. MEYER 25JUN2010		
TOLERANCES UNLESS OTHERWISE SPECIFIED:		APVD R. REED 25JUN2010	NAME SOCKET, STAMPED AND FORMED SIZE 16 14-18AWG	
0 PLC ±		PRODUCT SPEC 108-151000	SIZE A3	
1 PLC ±		APPLICATION SPEC 114-151000	CAGE CODE 4AFU8	DRAWING NO C=1062-14-10XX
2 PLC ±		WEIGHT 0.44 g	RESTRICTED TO -	
3 PLC ±0.025 [0.64]		CUSTOMER DRAWING	SCALE 6:1	SHEET 1 OF 1
4 PLC ±				REV CI
ANGLES ±				
FINISH SEE TABLE				