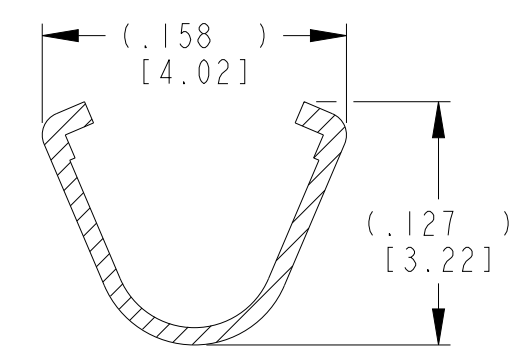
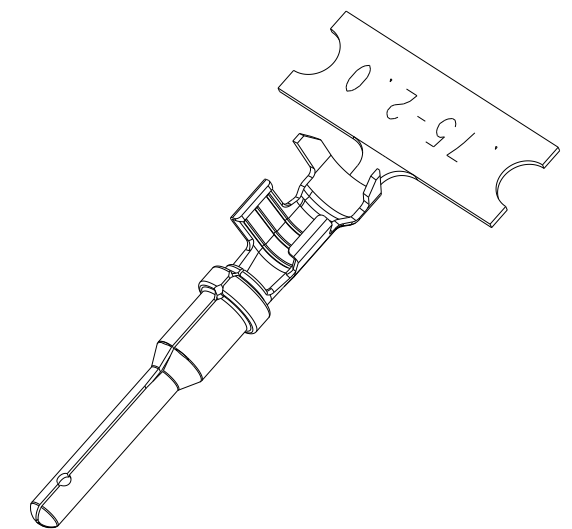
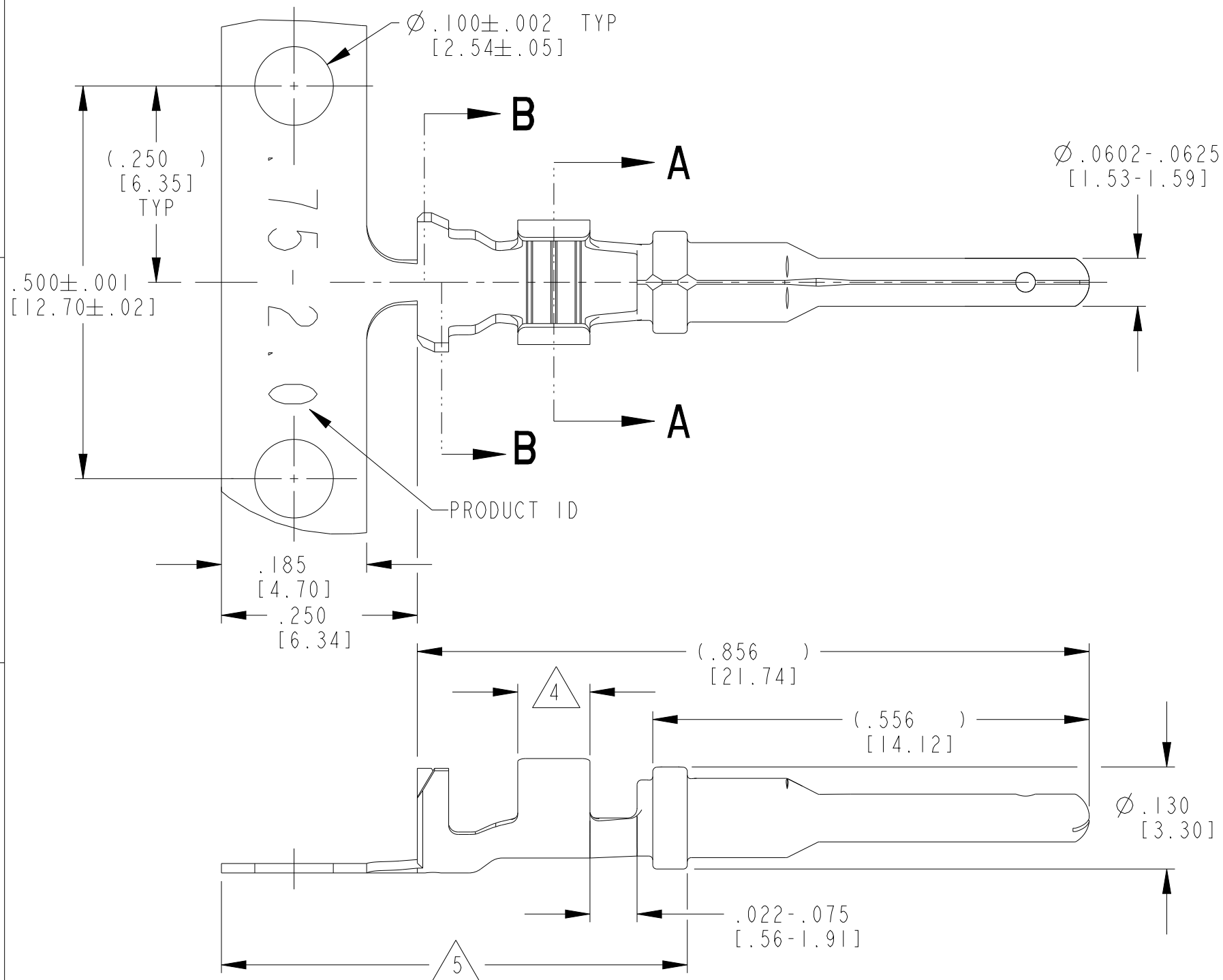
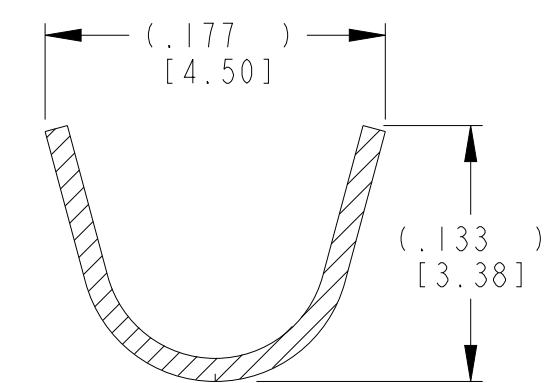


P	LTR	DESCRIPTION	DATE	DWN	APVD
F		REVISED PER ECO-15-007761	28MAY2015	RL	DM
G		REVISED PER PCN E-20-008101	12JUN2020	DM	DM
H		REVISED PER PCN-21-121539	07FEB2022	DRK	CB



**SECTION A-A**  
WIRE BARREL



**SECTION B-B**  
INSULATION BARREL

TE INTERNAL PN	DEUTSCH PN	PLATING
1060-16-0722	1060-16-0722	Ni/Cu overall, Sn/Ni/Cu Wire Barrel
<del>1060-16-0744</del>	<del>1060-16-0744</del>	<del>Selective Au, Ni/Cu overall, Sn/Ni/Cu Wire Barrel</del>
<del>1060-16-0777</del>	<del>1060-16-0777</del>	<del>Sn/Ni/Cu overall</del>

- 5 TIN PLATING MAY BE IN THIS REGION.
  - 4 TIN PLATED REGION.
  - 3 MATERIAL: .012 [0.30] THICK COPPER ALLOY
  - 2. WIRE RANGE: 18 AWG TO 14 AWG [0.75-2.0 mm<sup>2</sup>]  
INSULATION RANGE: Ø.075-.140 [Ø1.91-3.56]
  - 1 DELETED
- NOTES: UNLESS OTHERWISE SPECIFIED

THIS DRAWING IS A CONTROLLED DOCUMENT.

DIMENSIONS: INCHES [mm]	TOLERANCES UNLESS OTHERWISE SPECIFIED: 0 PLC ± 1 PLC ± 2 PLC ± 3 PLC ±.025 [0.64] 4 PLC ± ANGLES ±	DWN STEVE PALLUTH 01DEC2000		NAME STAMPED CONTACT PIN SIZE 16		
		CHK ALEX ROLINSKI 05DEC2000				
MATERIAL 3	FINISH SEE TABLE	APVD ROBIN REED 08DEC2000			PRODUCT SPEC 108-151000	SIZE A3
		APPLICATION SPEC 114-151000			WEIGHT 0.33 g	CAGE CODE 4AFU8
CUSTOMER DRAWING			DRAWING NO 1060-16-07XX	RESTRICTED TO -		
			SCALE 6:1	SHEET 1 OF 1		
			REV H			