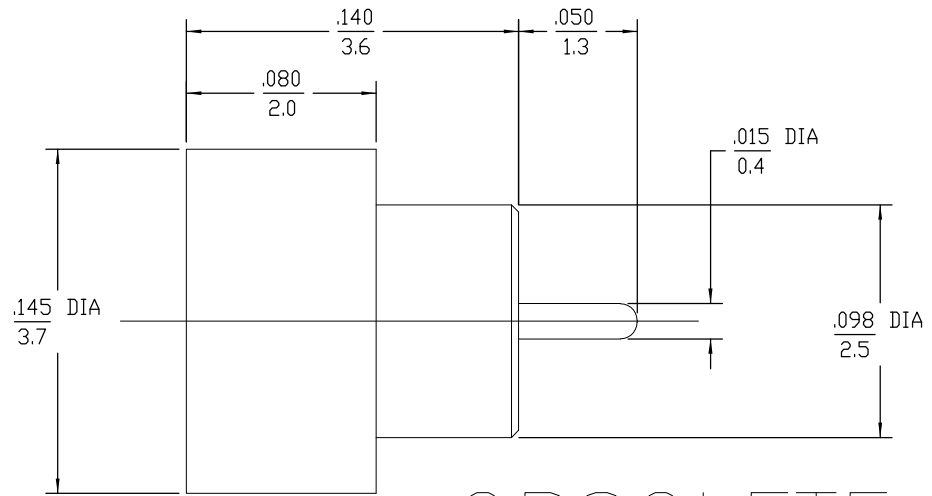



RECOMMENDED MOUNTING HOLE

.XXX = in  
XX.X = mm

| REVISIONS |                           |          |          |
|-----------|---------------------------|----------|----------|
| REV       | DESCRIPTION               | DATE     | APPROVED |
| A1        | REVISED PER ECO-17-005132 | 4AUG2017 | RS       |



OBSOLETE

|   |  |   |              |              |
|---|--|---|--------------|--------------|
| CONTACT EXT HOUSING   | IRON NICKEL COBALT SEALING ALLOY (KOVAR) PER ASTM F15-78 | GOLD PLATE PER MIL-G-45204  |              |              |
| DIELECTRIC  | CORNING GLASS 7070                                       | N/A   |              |              |
| COMPONENT   | MATERIAL   | FINISH  |              |              |
| UNLESS OTHERWISE SPECIFIED DIMENSIONS ARE IN INCHES TOLERANCE ON  | DRAWN BY DATE 1/30/95                                    |  <b>AMP Incorporated</b><br>140 Fourth Avenue<br>Waltham, MA 02451-7599 |              |              |
| FRAC. DEC. ANGLES<br>± 1/64 ±.005 ± 1°  | CHECKED BY   |   |              |              |
| These drawings and specifications are the property of M/A-COM Interconnect Division and shall not be reproduced or copied or used in whole or in part as the basis for the manufacture or sale of item(s) without written permission. | APP'D BY 8/23/95   |   |              |              |
| USE ASS'Y PROCEDURE   | TITLE OSMP SOLDER-IN SHROUD LIMITED DETENT               |   |              |              |
| NO. AP. N/A   | SIZE B   | CODE IDENT NO. 26805  | 2998-5055-94 | REV A1       |
|   | SCALE 20:1   |   |              | SHEET 1 OF 1 |

CUSTOMER DRAWING

AMP PART # 1056751-1  
SHEET 1 OF 1 REV A1