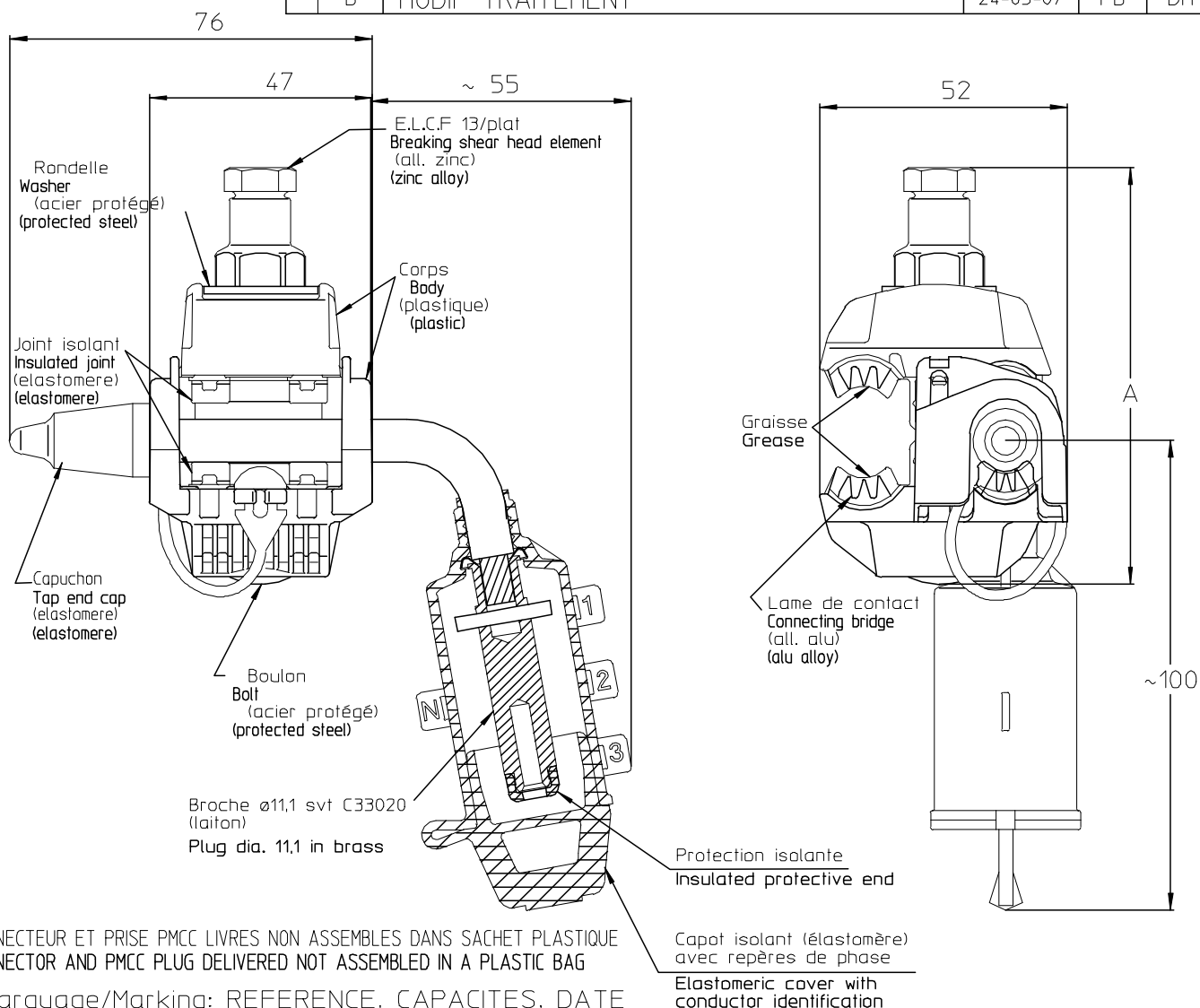


LOC	DIST	REVISIONS					
FH	2	P	LTR REV	DESCRIPTION MODIFICATIONS	DATE	DWN DESS.	APVD APP.
			0	CREATION	18-02-97	DM	AD
			A	REPLACE 35M PAR 25	13-04-99	JB	AD
			B	MODIF TRAITEMENT	24-05-07	FB	DM



CONNECTEUR ET PRISE PMCC LIVRES NON ASSEMBLES DANS SACHET PLASTIQUE
CONNECTOR AND PMCC PLUG DELIVERED NOT ASSEMBLED IN A PLASTIC BAG
Marquage/Marking: REFERENCE, CAPACITES, DATE

PN	Code	Ref. EdF	Ref. AMP-SIMEL	Weight Masse	Dimension COTE A	CAPACITES - CAPACITIES		Couple de rupture de l'élément fusible Breaking shear head torque	Clé de serrage hexagonale Hexagonal wrench
						Principal Main			
1018566-3	019000	CMCC/CT150	KZ2T-150	208g	90	54.6-150		11Nm	13
1018566-2	018999	CMCC/CT 70	KZ2T-70	204g	87	35-70		11Nm	13
1018566-1	018998	CMCC/CT 25	KZ2T-25	204g	87	16-25		11Nm	13

RELEASED FOR PUBLICATION
BY AMP INCORPORATED. ALL RIGHTS RESERVED. TOUS DROITS RESERVES.
COPYRIGHT 19
THIS DRAWING IS UNPUBLISHED. DIFFUSION RESEINTE AMP

DIMENSIONS: mm	DWN /DESSINE 18-02-97 MERCUZOT	MATERIAL MATIERE -	FINISH FINITION -
TOLERANCES UNLESS OTHERWISE SPECIFIED PER TOLERANCES NON SPECIFIEES SELON :	CHK /VERIFIE BAIJOT -		
	APVD /APPROUVE DUPONT -		
	PRODUCT SPEC SPEC. PRODUIT -	NAME TITRE KZ2T-25 KZ2T-70 KZ2T-150 (Version CBS)	
	APPLICATION SPEC SPEC. APPLICATION NFC 33020	SIZE FORMAT A4	CAGE CODE
WEIGHT MASSE APPROX. voir tableau	UNIQUEMENT POUR REFERENCE		SCALE ECHELLE 0.7
CUSTOMER DWG / PLAN CLIENT	SHEET FEUILLE 1 OF 1 DE 1		REV B