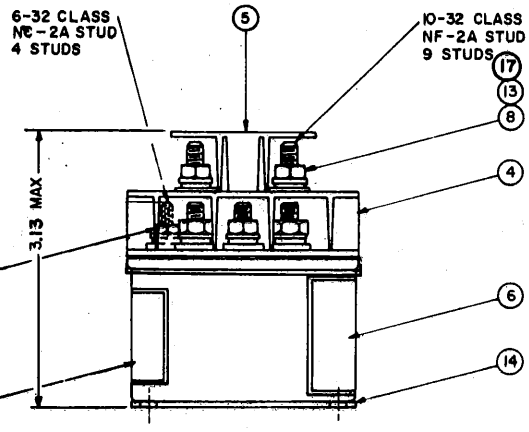
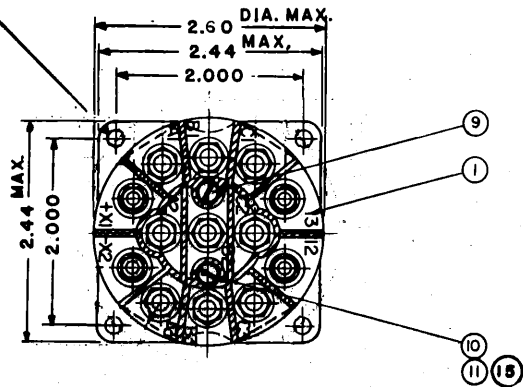


REV. A		REVISIONS		2-13-87	
SYM		DESCRIPTION	DATE	APPROVED	
A	19043	2.60 WAS 2.50	2-9-88	RS	

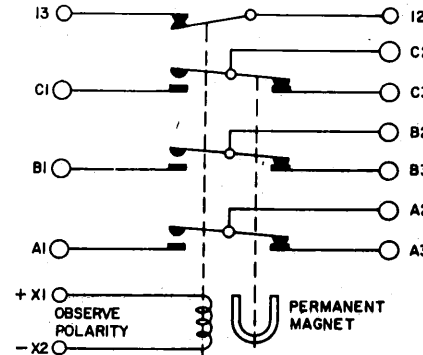
.171 DIA. HOLE
4 MTO. HOLES



CONSTRUCTION
NOMINAL VOLTAGE
CONTACT RATING
COIL DATA (MAX VDC)
(MIN VDC)

DROPOUT
RATED DUTY
VIBRATION
AUX CONTACT
AUX CONTACT RATING
MAX WEIGHT
MAX INTERRUPTING CAPACITY
AMBIENT TEMP

GASKET SEALED
115/208 V, 400 HZ
60 AMP, 115 V, 400 HZ
30 VDC AT 71°C
18 V, 71°C
7 TO 1.5 VDC AT 71°C
CONTINUOUS
PROC I, MIL-E - 5272
SPST NC
5 AMP, 28 VDC OR 115 V, 400 HZ
14 1/2 OZ.
450 A, 400 HZ
-55° TO +71°C



9	WASHER-3/8X13/64X.032 FLAT BRASS	51702-844	17
4	WASHER-3/8X9/64X.032 FLAT BRASS	51702-204 (AN 960 B6)	16
2	WASHER-3/16 x .103 x .015 MYLAR	51701180	15
1	CONTACTOR ASSEMBLY-PRIMARY	39619-010	14
9	WASHER - No. 10 SPLIT TYPE BRONZE LOCK	51810054 (AN935B10)	13
4	" No. 6 SPLIT TYPE BRONZE LOCK	51806014 (AN935B6)	12
2	" No. 5 SPLIT TYPE BRONZE LOCK	51805011 (AN935B5L)	11
1	SCREW - 5-40 x 1 1/8 RD. HD. BRASS	51205391	10
1	" 5-40 x 3/8 RD. HD. BRASS	51205391	9
9	NUT - 10-32 x 5/16 x 9/64 HEX BRASS	50410054	8
4	" 6-32 x 1/4 x 5/64 HEX BRASS	50406034	7
1	PLATE - WIRING DIAGRAM	18273-001	6
1	SHIELD - TERMINAL ZYTEL 51	17062-001	5
1	" " ZYTEL 51	17061-001	4
			3
1	PLATE - NAME	16043-001	2
1	PLATE - BASE COVER	15537-025	1
QTY REQD	NOMENCLATURE OR DESCRIPTION	PART OR IDENTIFYING NO	ITEM NO

PART LIST	
DATE 8-30-84	DR BY W. E. O.
DESIGNED FOR	
TOLERANCES UNLESS OTHERWISE SPECIFIED .00 ± .03 .000 ± .010	
MATERIAL	
APPROVED RS	
APPROVED LN	
HARTMAN ELECTRICAL MANUFACTURING MANSFIELD, OHIO	
CONT. 60 AMP 115/208 400 HZ 3 PDT SIDESTABLE SINGLE BREAK	
CODE IDENT NO	SIZE
74063	C
D-7BC	
SCALE: " = 1"	WEIGHT
SHEET	

D-7BC