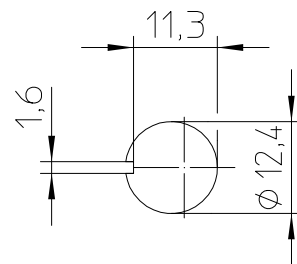
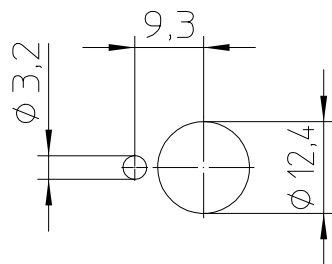
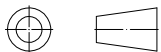
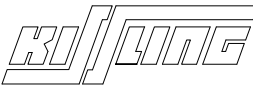


Mounting Detail
with locking ring without locking ring

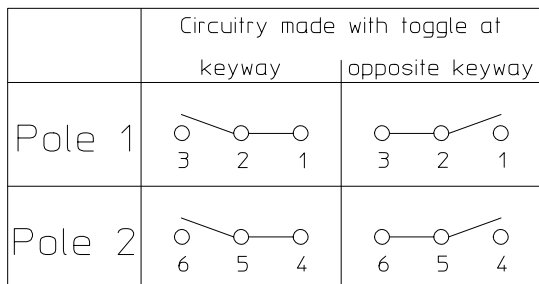


Third Angle Projection



	Date	Name	mm	Scale		Drawing No:
Drawn	17.03.2016	Stock	↔	1:1		07-2-2-13 D 936
Check	02.08.2016	Stock	General Tolerances DIN ISO 2768 cL		NSN:	

Circuit Diagram



Actuation

locking keyway side
locking opposite keyway side

Locking Configuration

locked keyway side
locked opposite keyway side

Construction

Material, Casing Thermoplast GF
 Material, Cover Steel
 Connections Faston DIN 46 244-A6,3-0,8
 Protection Interior IP 6K5 DIN 40 050 Part 9
 Connections IP 00 DIN 40 050 Part 9

Mechanical Data

Current carrying parts CuZn-Alloy
 Contacts Ag
 Ambient Temperature Range -35°C to +60°C
 Storage Temperature Range -35°C to +80°C
 Life Cycle (nominal load) 100.000 operations

Electrical Data

Voltage 12 V DC ohmic Load 20A
 28 V DC ohmic Load 20A
 28 V DC inductive Load at L/R = 5 ms 15A
 28 V DC lamp Load 7A
 115 V AC ohmic Load 15A
 115 V AC inductive Load cos. Φ = 0,75, 15A
 115 V AC lamp Load 4A
 Motor Load utilisation category AC3 (see DIN VDE 0660 Part 107) 5A

Min. Rating 12 V DC, 20 mA

It is recommended to use gold-plated contacts
for lower currents or voltages.

	Date	Name	mm	Scale		Drawing No:
Drawn	17.03.2016	Stock		1:1		07-2-2-13 D 936
Check	02.08.2016	Stock	General Tolerances			NSN: