

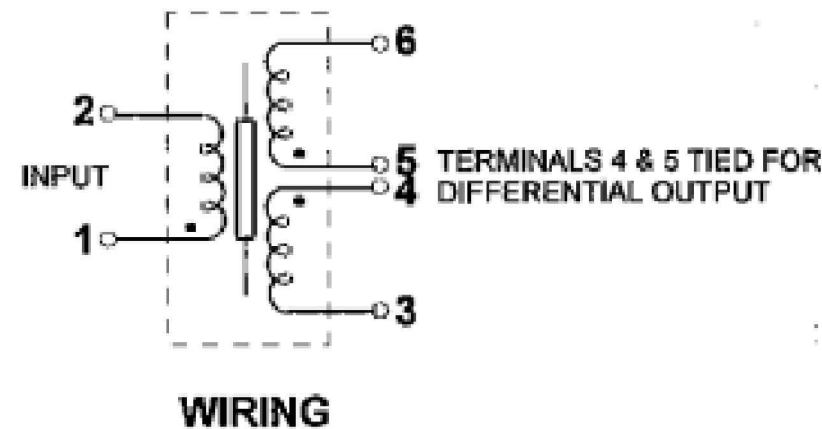
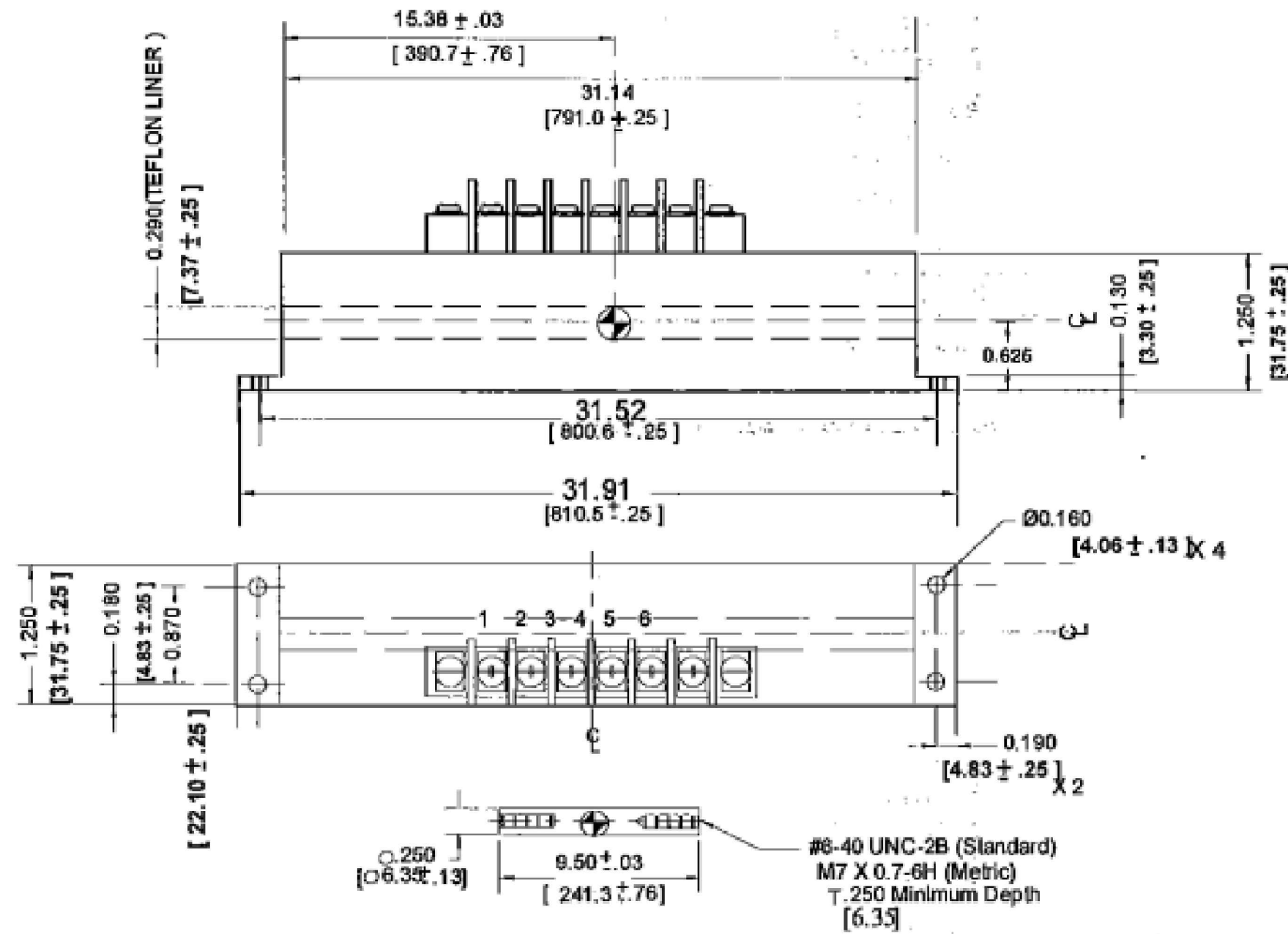
P	LTR	DESCRIPTION	DATE	DWN	APVD
-	-	-	-	-	-

SPECIFICATIONS

INPUT VOLTAGE: 6.0 V rms
 INPUT FREQUENCY: 2.5 kHz
 ELECTRICAL STROKE: ± 10.00"
 SENSITIVITY: 0.08 mV / VOLT / .001"
 NON-LINEARITY: 0.25% OF FULL RANGE
 PHASE SHIFT: 0°
 PRIMARY IMPEDANCE: 1070 OHMS NOM
 SECONDARY IMPEDANCE: 1000 OHMS NOM
 PRIMARY RESISTANCE: 100 OHMS NOM
 SECONDARY 1 RESISTANCE: 75 OHMS NOM
 SECONDARY 2 RESISTANCE: 75 OHMS NOM

REVISIONS

REV.	DESCRIPTION	DATE	APPR.
A	ECN # 15	1/22/96	R.E.A.
C	ADDED RESISTANCE VALUES	12/19/97	R.E.
D	REVISED PER ECR/ECN #448	12/05/01	R.E.A.



[] DENOTES MILLIMETERS
 ⊕ DENOTES CORE CENTER AT ELECTRICAL CENTER.

UNLESS OTHERWISE SPECIFIED ALL DIMENSIONS ARE IN INCHES TOLERANCES ARE: ANGLES: ± 0.5 DEG. FRACTIONS: ± 1/64. DECIMAL: XX = ± .01 .XXX = ± .005	DRAFTSMAN: R.E.A.	DATE: 30, NOV. 95	Macro Sensors Div. of Howard A. Schaeffler Technologies, Inc.	
	CHECKER:	DATE:		
	APPROVED:	DATE:	A C.A.G.E. No. 06WW0 DRAWING No. 010913110000	SCALE: NONE SHEET No. 1 of 1
	APPROVED:	DATE:		

MATERIAL:
 TPCMB 31361

THIS DRAWING IS A CONTROLLED DOCUMENT.		DWN	-		TE Connectivity SQ 1250 10000 OUTLINE
DIMENSIONS:	TOLERANCES UNLESS OTHERWISE SPECIFIED:	CHK	-		
INCHES	0 PLC ± - 1 PLC ± - 2 PLC ± - 3 PLC ± - 4 PLC ± - ANGLES ± -	APVD	-		
		PRODUCT SPEC	-		
MATERIAL	FINISH	APPLICATION SPEC	-	SIZE	A2
		WEIGHT	-	CAGE CODE	00779
		CUSTOMER DRAWING	-	DRAWING NO.	C=010913110000
		SCALE	NTS	SHEET	1 of 1
		REV	D		