

REVISIONS

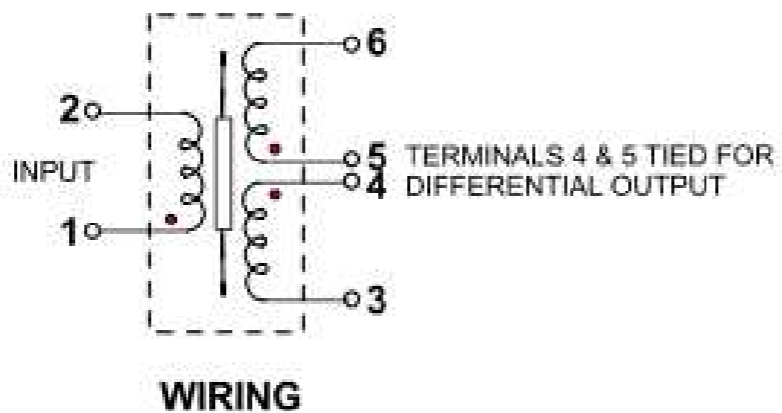
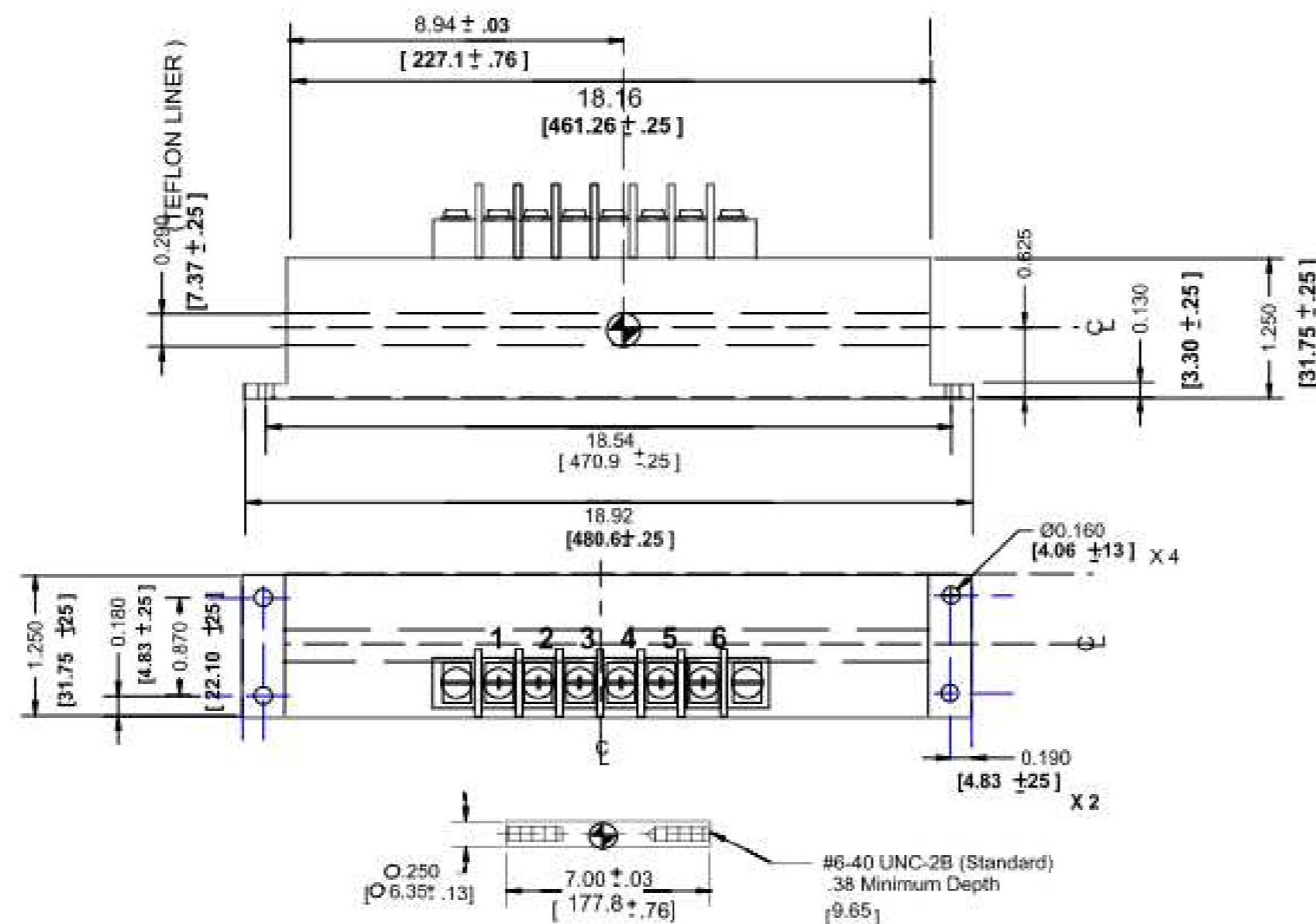
P	LTR	DESCRIPTION	DATE	DWN	APVD
	D	-	-	-	-

SPECIFICATIONS

INPUT VOLTAGE: 6.0 V rms
 INPUT FREQUENCY: 2.5 kHz
 ELECTRICAL STROKE: +/- 5.000" [127]
 SENSITIVITY: .14 mv / VOLT / .001" +/-20%
 LINEARITY: 0.25% OF FULL RANGE
 PHASE SHIFT: + 3 DEGREES
 PRIMARY IMPEDANCE: 1170 OHMS
 SECONDARY IMPEDANCE: 880 OHMS
 PRIMARY RESISTANCE: 130 OHMS (NOM.)
 SECONDARY 1 RESISTANCE: 136 OHMS (NOM.)
 SECONDARY 2 RESISTANCE: 136 OHMS (NOM.)

REVISIONS

REV.	DESCRIPTION	DATE:	APPR.
A	ECN # 15	1/22/96	R.E.A.
B	COMPLETE REDESIGN OF I VDT ASSEMBLY	8/27/97	R.E.A.
C	ADDED RESISTANCE VALUES	12/19/97	R.E.A.
D	REVISED PER ECR/ECN #448	12/05/01	R.E.A.



[] DENOTES MILLIMETERS
 ⊕ DENOTES CORE CENTER AT ELECTRICAL CENTER.

UNLESS OTHERWISE SPECIFIED ALL DIMENSIONS ARE IN INCHES TOLERANCES ARE: ANGLES: +/- 0.5 DEG. FRACTIONS: +/- 1/64. DECIMAL: XX= +/- .01 .XXX= +/- .005	DRAFTSMAN: R.E.A.	DATE: 30, NOV. 95	Macro Sensors Div. of Howard A. Schaevitz Technologies, Inc.		
	CHECKER:	DATE:			
	APPROVED:	DATE:	TITLE SQ 1250 5000 OUTLINE		
	APPROVED:	DATE:			
FINISH:	APPROVED:	DATE:	A	C.A.G.E. No. 06WW0	DRAWING No. 010913100000
			SCALE: NONE	SHEET No. 1 of 1	

MATERIAL:

THIS DRAWING IS A CONTROLLED DOCUMENT.		DWN	-	TE Connectivity	
		CHK	-		
DIMENSIONS:	TOLERANCES UNLESS OTHERWISE SPECIFIED:	APVD	-	NAME	
INCHES		PRODUCT SPEC	-	SQ 1250 5000 OUTLINE	
		APPLICATION SPEC	-	SIZE	CAGE CODE
				A2	00779
MATERIAL	FINISH	WEIGHT	-	DRAWING NO	RESTRICTED TO
-	-	-	-	C=010913100000	-
CUSTOMER DRAWING			SCALE	SHEET	REV
			NTS	1 of 1	D