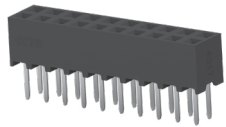
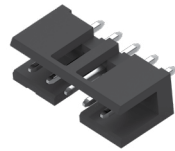


# EV CHARGING SOLUTIONS - BOARD SIGNAL INTERCONNECTS

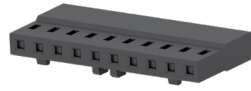
## AMPMODU 2 mm



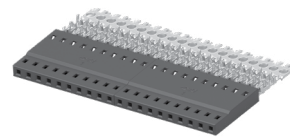
**Receptacle**  
**Part number:**  
[2-2314822-0](#)



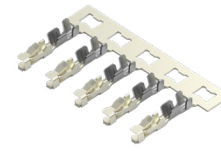
**Header**  
**Part number:**  
[1-2823381-0](#)  
[2-2823124-0](#)



**Receptacle**  
**Part number:**  
[1-2316103-0](#)

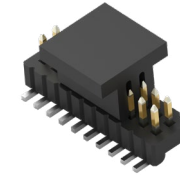


**Receptacle**  
**Part number:**  
[1-2317206-0](#)

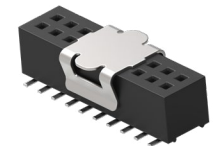


**Receptacle**  
**Part number:**  
[5-2316113-5](#)

## AMPMODU Small Centerline



**Header**  
**Part number:**  
[1-2331928-0](#)



**Receptacle**  
**Part number:**  
[1-2267465-0](#)

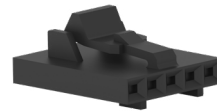
## AMPMODU MTE



**Header**  
**Part number:**  
[5-104362-5](#)



**Header**  
**Part number:**  
[5-103635-5](#)



**Housing**  
**Part number:**  
[104257-5](#)



**Receptacle**  
**Part number:**  
[5-103958-5](#)

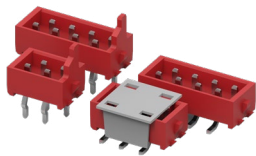


**Socket**  
**Part number:**  
[1-104480-2](#)

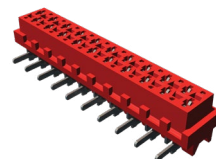
## Additional Products for EV Charging Solutions:

- Relays & Contactors
- Dynamic Series
- Passives, Switches & Filters
- ENTRELEC terminal blocks, IDENT, Terminals & Splices

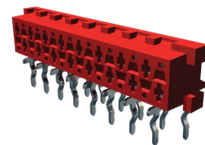
## Micro-MaTch



**MOB connector**  
**Part number:**  
[1-338728-0](#)



**FOB connector**  
**Part number:**  
[1-188275-0](#)



**Receptacle**  
**Part number:**  
[1-338070-0](#)



**Housing**  
**Part number:**  
[1-338095-0](#)



**Pin**  
**Part number:**  
[1-338097-1](#)

Visit [te.com](https://te.com) for more information

© 2021 TE Connectivity Corporation. All Rights Reserved. AMPMODU, ENTRELEC, Micro-MaTch, TE Connectivity, TE, TE connectivity (logo) and EVERY CONNECTION COUNTS are trademarks.

08/21 AK