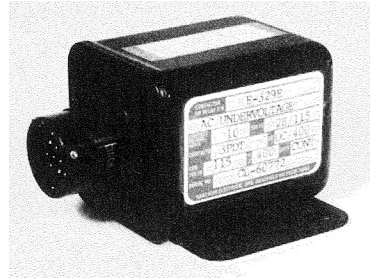


## E-329 Series Relay, Voltage Sensing

### Product Facts

- 3PDT
- Solder sealed cover, hermetically sealed contacts
- Meets many requirements of MIL-PRF-6106



### Performance Data

#### Electrical Characteristics

**Contact Arrangement** — 3PDT

**Rated Operating Voltage** — 28 Vdc, and 155 Vac 400 Hz

**Resistive Rating** — 10 Amps

**Inductive Rating** — 8 Amps

**Motor Rating** — 4 Amps

**Lamp Rating** — 2 Amps

**Pickup Time, Max.** — 70 msec

**Contact Bounce, Max.** — 3 msec

**Dropout Time Delay** —

200-400 msec when the relay is in the energized position and the voltage drops below  $104 \pm 2$  Vrms and above  $88 \pm 4$  Vrms. The relay will remain energized for 200-400 msec before deenergizing. When the voltage drops below  $88 \pm 4$  Vrms no time delay is required. When the voltage drops to 30 volts or less the relay will de-energize 50 msec max.

**Operating Voltage, Nom.** — 115 VAC, RMS L-N

**Operating Voltage, Max.** — 122 VAC, RMS L-N

**Operating Frequency** —  $400 \pm 20$  Hz

**Pickup Voltage** —  $109 \pm 2$  Vrms

**Dropout Voltage** —  $104 \pm 2$  Vrms

**Operating Current, Max. @ 25°C** — 100 milliamp

#### General Characteristics

**Temperature Range** —  $-55^{\circ}\text{C}$  to  $+85^{\circ}\text{C}$

**Operating Cycles (Life) at Rated Resistive Load, Min.** — 100,000 cycles

**Operating Cycles (Life) Mechanical, Min.** — 100,000 cycles

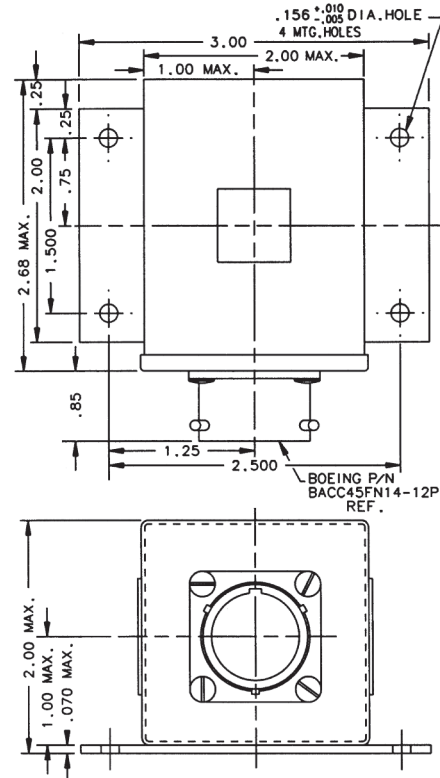
**Dielectric Withstanding Voltage** — 1,000 Vrms, 60 Hz

**Insulation Resistance @ 500 Vdc** — 1,000 megohm min.

**Altitude** — 0-80,000 ft

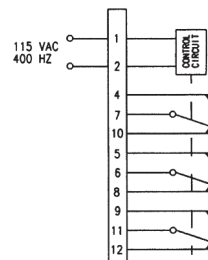
**Weight, Max.** — 10 oz

**Shock for 11 msec, 1/2 Sine, 3 Axis** — 30 G



Mounting Style A

### Circuit Configurations (Consult factory for other available circuit configurations)



Circuit Configuration 1

For factory-direct application assistance, phone 419-521-9500 or fax 419-526-2749.

HARTMAN Part Number	Construction Type	Mounting Style	Duty Cycle	Circuit Config.	TE Part Number
E-329E	Hermetically Sealed	A	Continuous	1	1-1616126-9