



# SMARTSEAL CONNECTOR

## ECU Connections Made Easy

An innovative, headerless ECU connector for harsh environments

TE Connectivity (TE) Industrial & Commercial Transportation's SmartSeal connector (TE part number 2305186-1) is designed to be the next generation ECU connectivity solution. This innovative connector mates directly to an overmolded PCB ECU housing, eliminating the need for a separate PCB header and sealed enclosure, ultimately saving application space and costs. The SmartSeal is a rugged connector that is engineered to withstand the demands of the two-wheeler, ATV/UTV, leisure marine, and recreational vehicle markets.

The SmartSeal connector uses TE's new high-performance single piece terminals (TE part numbers 1-2236793-3 & 2291193-3). The contacts feature a single contact beam and accommodate a wide range of wire sizes (0.50-0.75 mm<sup>2</sup> and 0.30-0.35 mm<sup>2</sup>). The new proprietary terminals incorporate an innovative wave structure contact zone, which optimizes current distribution and flow. Due to the terminals' unique wave structure design and spacer actuated pressure, the mating force required to achieve extreme levels of performance is reduced. The design also helps to reduce the surface disruption and wear on the plated PCB contact zones.

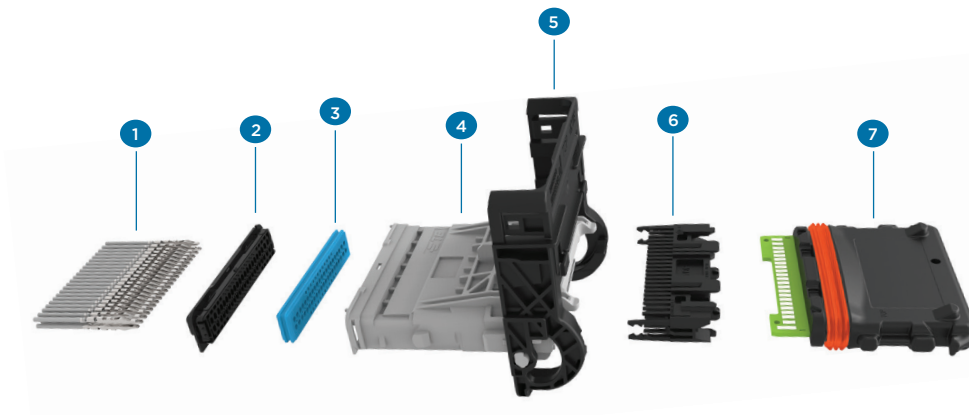
The SmartSeal connectors, like the entire TE Industrial & Commercial Transportation product portfolio, deliver reliable connectivity solutions for applications where failure is not an option.

### FEATURES

- Headerless, environmentally sealed PCB connector
- Proprietary single contact beam terminal design for low mating force
- Terminal's wave structure PCB contact zone provides extreme level of performance

## SmartSeal Connector

1. Crimped Contact Assembly
2. Seal Holder
3. Family Seal
4. Housing / Cavity Block
5. Lever
6. Spacer
7. ECU Assembly (provided by ECU supplier)



## SPECIFICATIONS

### Mechanical

<b>Operating Force</b>	75 N
<b>Sealing</b>	IP 69K
<b>Dimensions</b>	92 x 79.9 x 26.7 mm

### Electrical

<b>Current:</b>	5 A
<b>Voltage:</b>	30 V
<b>Insulation Resistance:</b>	100 MΩ min.

## APPLICABLE DOCUMENTS

<b>Product Specification</b>	108-94467-1 for housing 108-94449 for terminals	<b>Application Specification</b>	114-94315 for terminals
------------------------------	--	----------------------------------	-------------------------

## ORDERING INFORMATION

Description	Part Number
SmartSeal, 44 way, pressure spring receptacle housing	2305186-1
Receptacle contact, pressure spring, [0.30-0.35mm <sup>2</sup> ], [1.40-1.90] ins., silver	2291193-3
Receptacle contact, pressure spring, [0.50-0.75mm <sup>2</sup> ], [1.40-1.90] ins., silver	1-2236793-3
Blind plug, black	2289990-1
OCEAN applicator, side feed (see drawing for -1/2/5/6/7 applicator types)	2266499-*
Hand crimp tool and die set assembly	8-1579024-0
Extraction tool, contact removal	3-1579028-0
Extraction tool, spacer removal	2-1579028-9

## te.com/ict

TE Connectivity and TE connectivity (logo) are trademarks. All other logos, products and/or company names referred to herein might be trademarks of their respective owners.

The information given herein, including drawings, illustrations and schematics which are intended for illustration purposes only, is believed to be reliable. However, TE Connectivity makes no warranties as to its accuracy or completeness and disclaims any liability in connection with its use. TE Connectivity's obligations shall only be as set forth in TE Connectivity's Standard Terms and Conditions of Sale for this product and in no case will TE Connectivity be liable for any incidental, indirect or consequential damages arising out of the sale, resale, use or misuse of the product. Users of TE Connectivity products should make their own evaluation to determine the suitability of each such product for the specific application.

© 2016 TE Connectivity Ltd. family of companies All Rights Reserved.

TS-ICT-SMSEAL 08/16 Original

## PRODUCT SHEET

### TE Connectivity Industrial & Commercial Transportation

4849 Hempstead Station Drive  
Kettering, Ohio 45429 USA

Tel 1-888-441-9982  
[www.te.com](http://www.te.com)