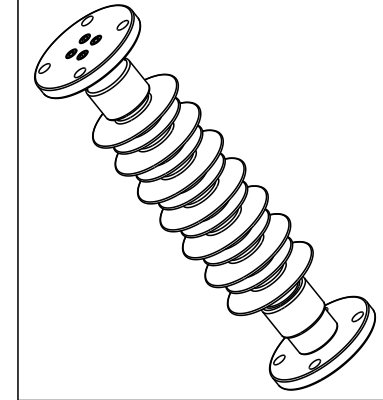
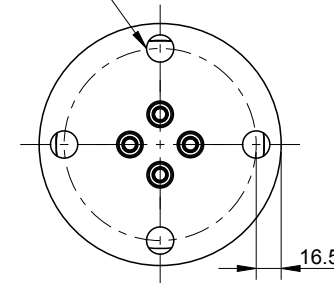


4 OFF $\varnothing 18$
ON PCD $\varnothing 127 \pm 1$



PROPRIÉTÉS MÉCANIQUES:

FLEXION: SCL = 5 kNm
MDCL = 2.5kNm
CHARGE DE RUPTURE MINIMALE EN TRACTION DANS LA ZONE DE COUPLAGE: 60kN
TORSION = 1250 Nm

PROPRIÉTÉS ÉLECTRIQUES:

TENSION DE CONTOURNEMENT à FRÉQUENCE INDUSTRIELLE à SEC: 191 kV
TENSION DE CONTOURNEMENT à FRÉQUENCE INDUSTRIELLE SOUS PLUIE: 163 kV
TENSION DE TENUE à FRÉQUENCE INDUSTRIELLE à SEC: 143 kV (30 min.)
TENSION DE TENUE à FRÉQUENCE INDUSTRIELLE SOUS PLUIE: 141 kV (1 Min.)
TENUE AU CHOC DE FOUDRE: 299 kV

PROPRIÉTÉS PHYSIQUES:

LONGUEUR MINIMALE DE LA LIGNE DE FUIE 1200mm
DISTANCE D'ARC NOMINALE A : SEC 470mm
POIDS NET: 11kg

MATIERES:

FERRURES: FONTE EN8.
GALVANISÉE SELON EN-ISO-1461/14713 CLASS S - ST137
ISOLANT : (EVA) RAYCHEM HV GRIS
NOYAU : $\varnothing 45$ RBGF

MARQUAGE:

LOT AA/MM
2 DERNIERS CHIFFRES DE L'ANNÉE / MOIS
IDENTIFICATION: RAYCHEM
INS1329
SNCF REF. 200670
0.883.0331

SHEET 1 OF 1				ENERGY TE connectivity		BAY 105 SHANNON IND. EST. SHANNON CO. CLARE IRELAND		
SCD						Raychem Insulator		
DRN	J HALLY	07/12		TOLERANCES UNLESS OTHERWISE SPECIFIED 0 PLC ± 1 1 PLC ± 0.1 2 PLC ± 0.01 3 PLC ± 0.001 4 PLC ± 0.0001	THIS DRAWING AND THE INFORMATION SET FORTH HEREIN ARE THE PROPERTY OF TE CONNECTIVITY AND ARE TO BE HELD IN TRUST AND CONFIDENCE. PUBLICATION, DUPLICATION, DISCLOSURE OR USE FOR ANY OTHER PURPOSE NOT EXPRESSLY AUTHORISED IN WRITING BY TE CONNECTIVITY IS PROHIBITED.	TITLE MV INSULATOR RRA-52G-BBG-560 200670 (0.883.0331)		
CHECK	JM							
APP	JM							
SCALE	NTS					PCN	CY3134-000	DRG NO
							REV	4

DOCUMENT REVISION CONTROL

REVISION	DATE	ECO #	REQUESTED BY	CHANGE DETAILS	SIGN
0	07/12	-	TB	ORIGINAL ISSUE	JH
1	09/12	-	TB	PRODUCT MECHANICAL UPDATED	JH
2	01/13	ECO-13-001292	TB	BASE THICKNESS UPDATED TO 18mm (D4), PRODUCT TORSIONAL STRENGTH UPDATED AFTER TESTING.	JH
3	06/14	ECO-14-009438	BD	NET WEIGHT ADDED TO DRAWING	SH
4	06/16	ECO-16-008926	RK	DIMENSION UPDATED TO 560+/-1	SH

D

C

B

A

CY3134-000

RRA-52G-BBG-560

INS1329

SCD



4

3

2

1