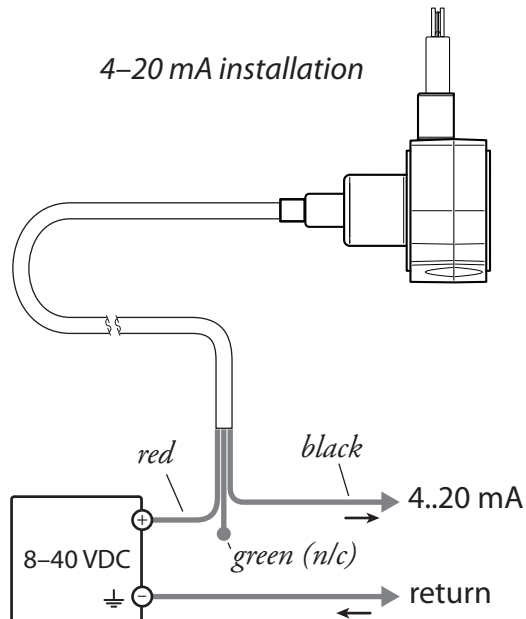


# SP3 Installation Guide

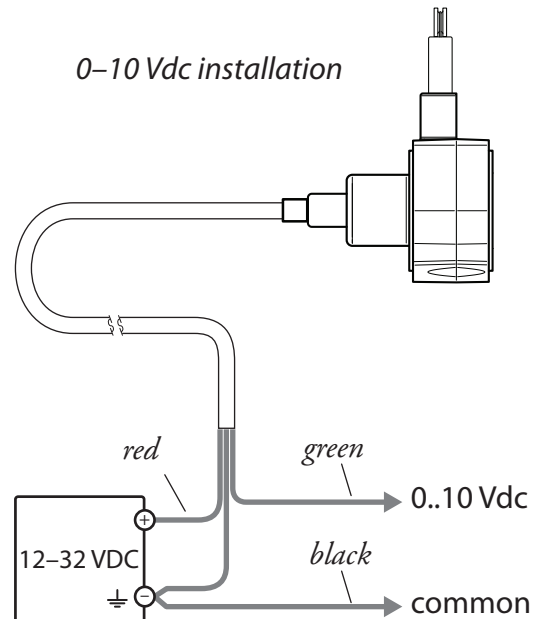
includes: SP3-4, SP3-12, SP3-25, SP3-50



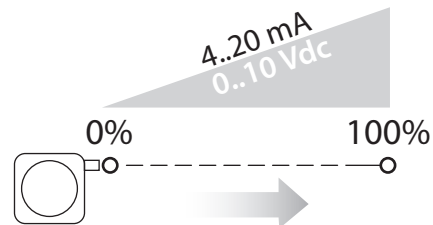
## Electrical Connection



## Electrical Connection

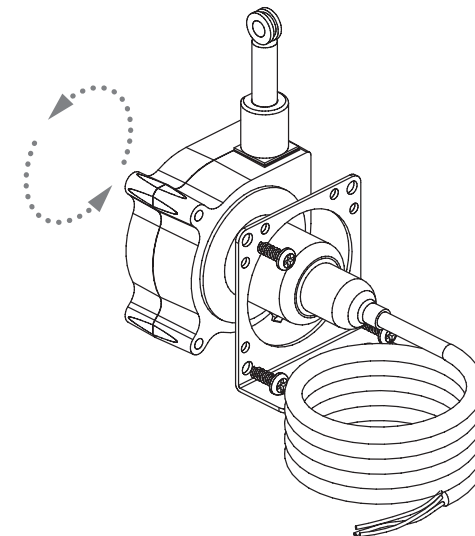


## Output Signal / Circuit



Output	0% fs.	100% fs.
4...20 mA	4 – 4.25 mA	19.2 – 20 mA
0...10 Vdc	0 – .2 Vdc	9.5 – 10 Vdc

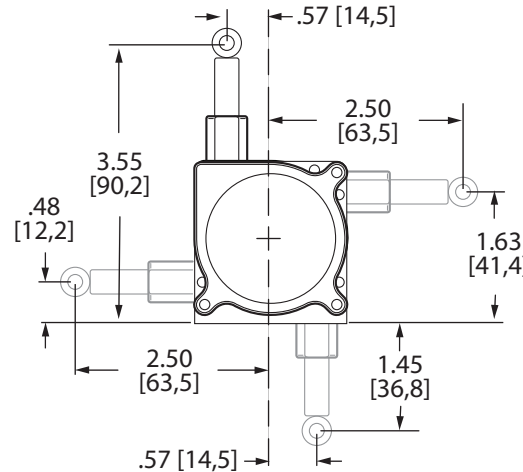
## Measuring Cable Exit Direction



To change cable exit direction, simply remove the 3 mounting bracket screws and rotate sensor body to 1 of 4 options.

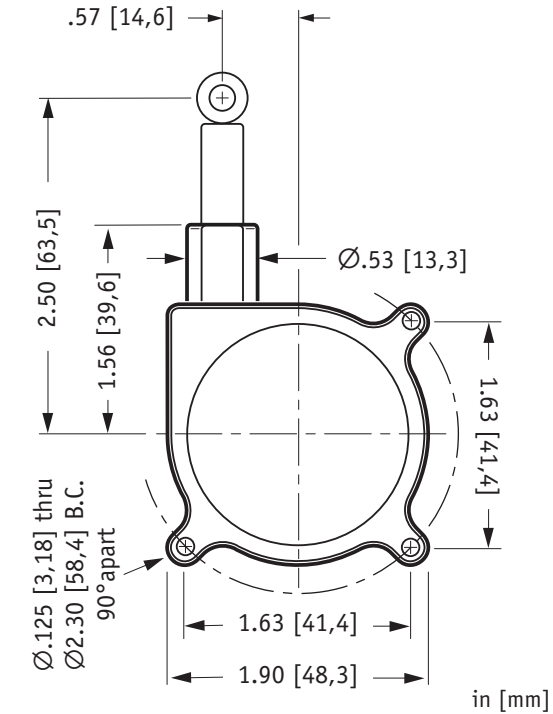
## alternate installation

alternate measuring cable exits

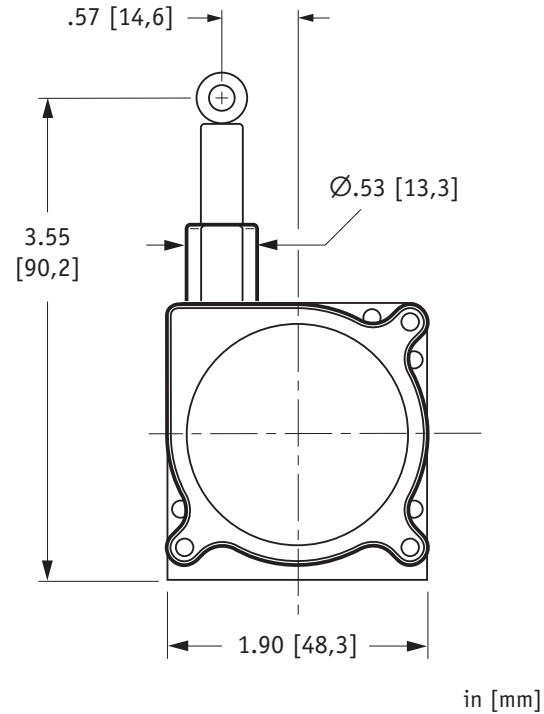


in [mm]

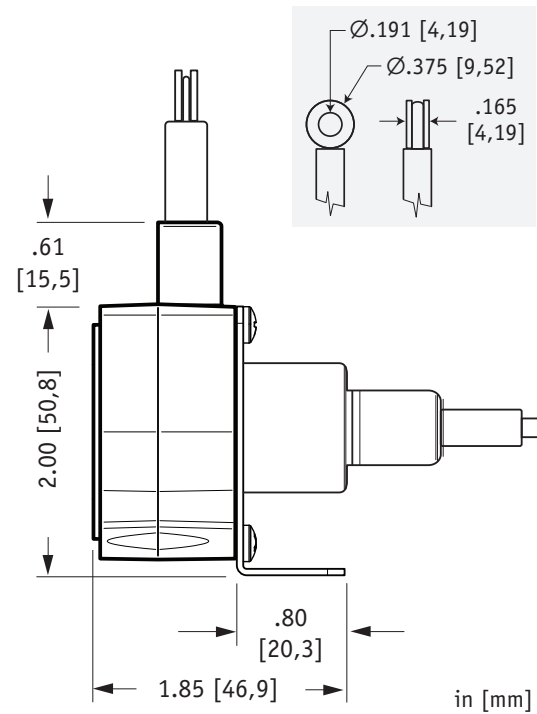
Front View (w/o mounting bracket)



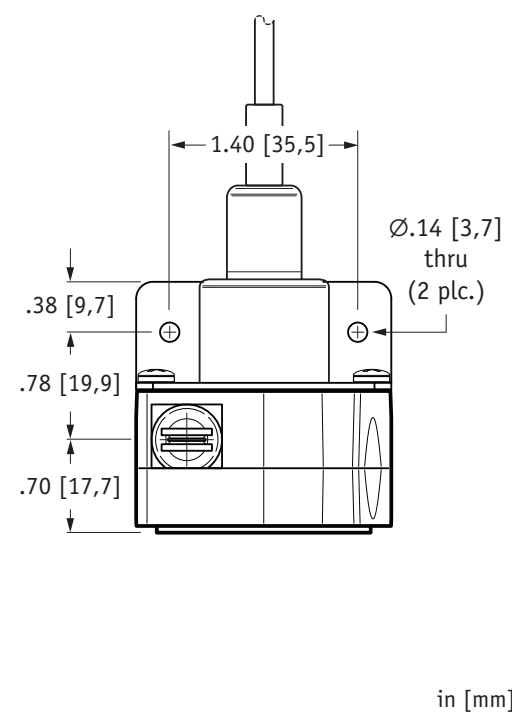
Front View (w/ mounting bracket)



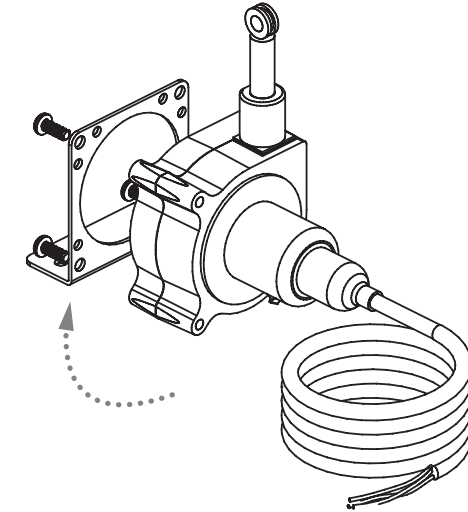
Side View



Top View



Alternate Bracket Installation



For added flexibility, the mounting bracket can easily be switched to opposite side.

Specifications

Stroke Range Options:	4.75, 12.5, 25 and 50 inches
Accuracy	
4.75-inch range:	1% fs.
all others:	.25% fs.
Repeatability:	±.05% fs.

Enclosure:	polycarbonate
Measuring Cable:	.019-in. dia. nylon-coated stainless
Measuring Cable Tension:	7 oz. (1,9 N) ±25%
Max Cable Acceleration:	15 g

User Selectable Output:	4–20mA or 0–10Vdc
Input Voltage, 4..20mA option:	8–40 Vdc
Input Voltage, 0..10 Vdc option:	12–32 Vdc
Sensor:	plastic hybrid potentiometer

Enclosure:	IP50
Operating Temp:	0°–160°F (-18° to 71°C)

Complete Specs:	<a href="http://celesco.com/_datasheets/sp3.pdf">celesco.com/_datasheets/sp3.pdf</a>
-----------------	--