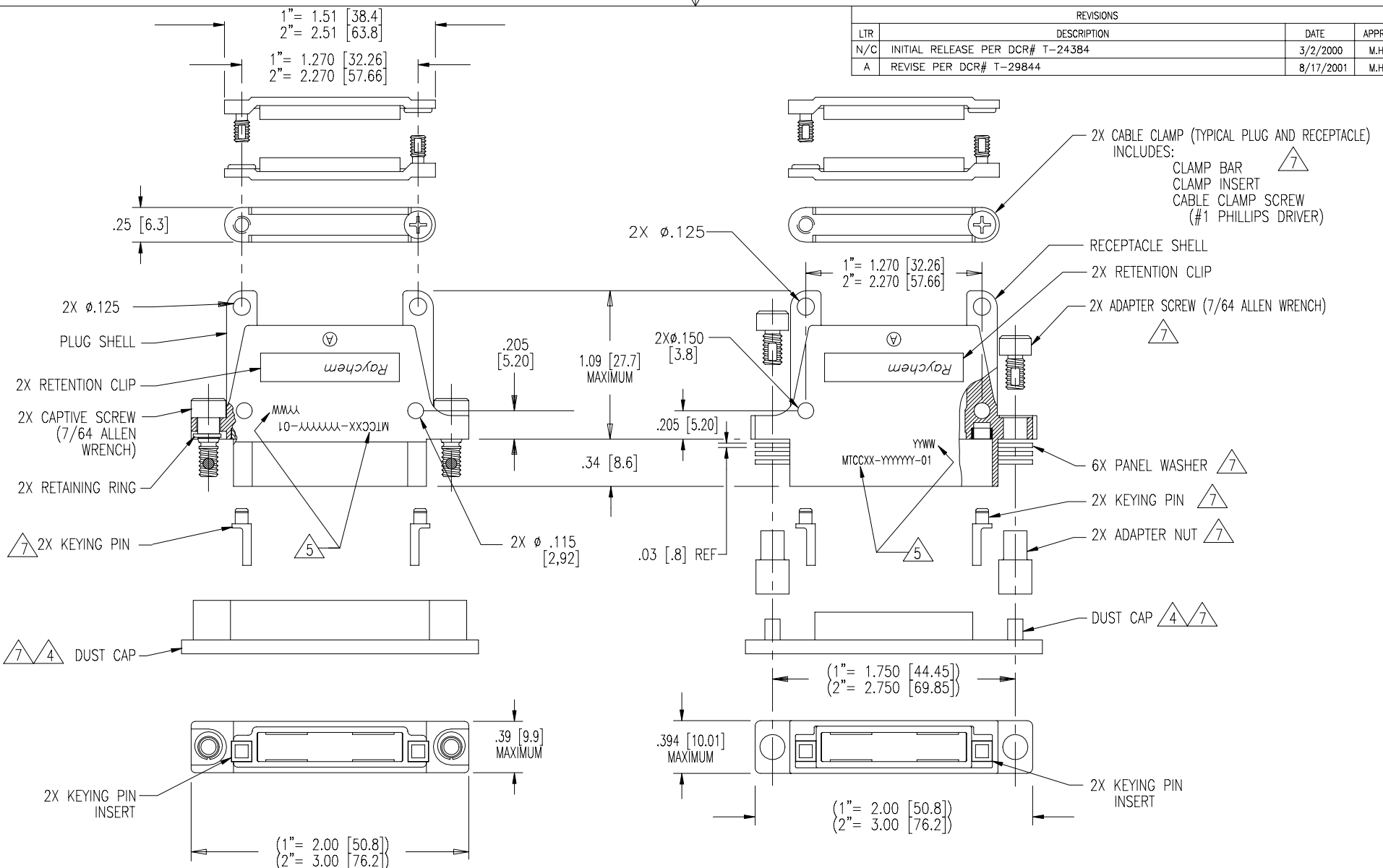


REVISIONS			
LTR	DESCRIPTION	DATE	APPROVED
N/C	INITIAL RELEASE PER DCR# T-24384	3/2/2000	M.HIGGY
A	REVISE PER DCR# T-29844	8/17/2001	M.HIGGY



PLUG ASSEMBLY

RECEPTACLE ASSEMBLY

SPECIFICATION CONTROL DRAWING

NOTES: SEE SHEET 2.

**If this document is printed it becomes uncontrolled.
Check with the web for latest revision.**

UNLESS OTHERWISE SPECIFIED DIMENSIONS ARE IN INCHES. METRIC DIMENSIONS ARE IN BRACKETS. DECIMALS .XXX ± .005 { .13 mm } .XX ± .02 { .5 mm } ANGLES .X ± WEIGHT: $\triangle 8$	DRAWN ZS.ORBAN 2/29/2000	tyco /Electronics/Raychem WIRE AND HARNESSING PRODUCTS 307 CONSTITUTION DRIVE MENLO PARK, CALIFORNIA 94025	
	CHECKED		TITLE
	APPROVED		SHELL, PLUG OR RECEPTACLE, SPECIAL MARKING, 1" AND 2" WITH EARS, CADMIUM PLATED
	APPROVED M.HIGGY 3/2/2000		SIZE C CODE IDENT. NO. 06090 DWG. NO. MTCCXX-YYYYYY-01 REV A
CAD NAME T29844a,b,DWG	THIRD ANGLE PROJECTION $\triangle - \oplus$	DO NOT SCALE THIS DRAWING	

SHEET 1
DWG. NO. MTCCXX-YYYYYY-01

SHEET 1 OF 2

If this document is printed it becomes uncontrolled.
Check with the web for latest revision.

NOTES:

1 PART NUMBER VARIABLES:

MTCCXX-YYYYYY-01

01= WITH CABLE CLAMP

CUSTOMER SPECIFIED PART MARKING
(ANY LENGTH)

SHELL TYPES:

P= PLUG WITH EARS
R= RECEPTACLE WITH EARS

CONNECTOR WIDTH:

1= 1 INCH
2= 2 INCH

TABLE I	
PART NUMBER	WEIGHT MAXIMUM GRAMS
MTCC1R-YYYYYY-01	27.3
MTCC1P-YYYYYY-01	23.8
MTCC2R-YYYYYY-01	38.3
MTCC2P-YYYYYY-01	34.2

2. MATERIAL:

- A) SHELL ALUMINUM ALLOY PER QQ-A-591
- B) RETENTION CLIP COPPER ALLOY 172 PER QQ-C-533
- C) ADAPTER SCREW OR CAP SCREW STAINLESS STEEL PER QQ-S-763, 300 SERIES
- D) ADAPTER NUT OR RETAINER BUSHING STAINLESS STEEL PER QQ-S-763, 300 SERIES
- E) PANEL OR LOCK WASHER STAINLESS STEEL PER QQ-S-763 OR QQ-S-766, 300 SERIES
- F) KEYING PIN HIGH GRADE POLYARYLENE THERMOPLASTIC, MOLDED
- G) KEY PINS INSERT HIGH GRADE POLYARYLENE THERMOPLASTIC, MOLDED
- H) CLAMP BAR STAINLESS STEEL PER QQ-S-763, 300 SERIES
- J) CLAMP INSERT SILICONE ELASTOMER PER MIL-R-25988
- K) CAPTIVE SCREW STAINLESS STEEL PER QQ-S-763, 300 SERIES
- L) RETAINING RING COPPER ALLOY 172 PER QQ-C-533
- M) DUST CUP POLYETHYLENE LOW DENSITY PER L-P-390, COLOR RED.

3. FINISH: CADMIUM PLATED CONNECTORS

- A) SHELL CADMIUM PLATED PER QQ-P-416 OVER NICKEL UNDERPLATE
- B) RETENTION CLIP CADMIUM PLATED PER QQ-P-416
- C) ADAPTER OR CAP SCREW CADMIUM PLATED PER QQ-P-416
- D) ADAPTER NUT OR RETAINER BUSHING CADMIUM PLATED PER QQ-P-416
- E) PANEL OR LOCK WASHER CADMIUM PLATED PER QQ-P-416
- F) CLAMP BAR CADMIUM PLATED PER QQ-P-416
- G) CAPTIVE SCREW CADMIUM PLATED PER QQ-P-416
- H) RETAINING RING CADMIUM PLATED PER QQ-P-416

4 DUST CAP SUPPLIED WITH EACH PLUG OR RECEPTACLE.

5 APPROPRIATE PART NUMBER AND DATE CODE ARE STAMPED APPROXIMATELY AS SHOWN.

6. THESE PARTS MEET THE REQUIREMENTS OF RAYCHEM SPECIFICATION C-6111.

7 INDICATED PARTS ARE SHIPPED LOOSE.

8 SEE TABLE I, WEIGHTS ARE WITHOUT DUST CAP.

DWG NO. MTCCXX-YYYYYY-01 SHEET 2

DWG. NO.	REV
MTCCXX-YYYYYY-01	A
CAD FILE No.: T29844b.DWG SHEET 2 OF 2	