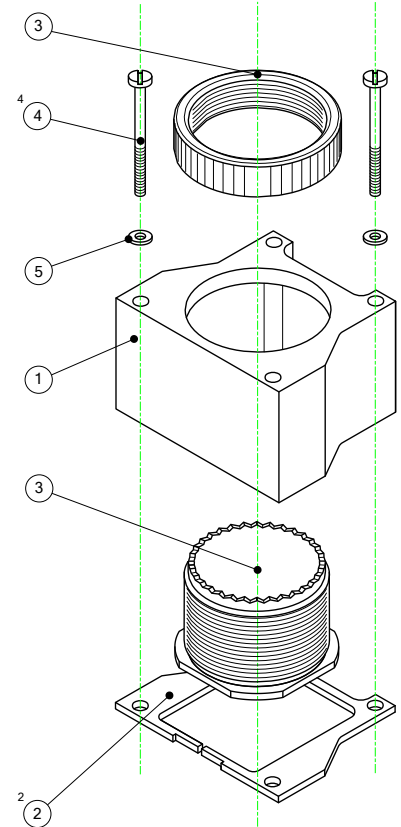
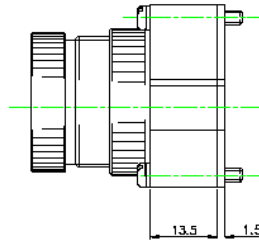
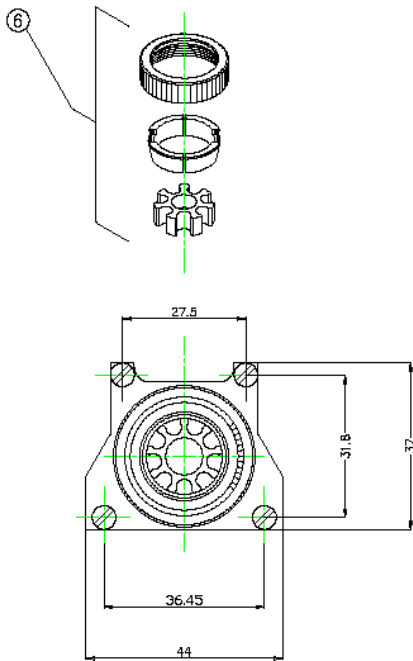



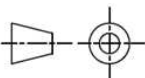
THIS DRAWING AND THE INFORMATION SET FORTH HEREON ARE THE PROPERTY OF TYCO ELECTRONICS AND ARE TO BE HELD IN TRUST AND CONFIDENCE. PUBLICATION, DUPLICATION, DISCLOSURE, OR USE FOR ANY PURPOSE NOT EXPRESSLY AUTHORIZED IN WRITING BY TYCO ELECTRONICS IS PROHIBITED.

REVISIONS			
LTR	DESCRIPTION	DATE	APPROVED
B	REV PER ECO 18-017967	2-12-19	EH

SUPERSEDED BY CUSTOMER DRAWING P36932



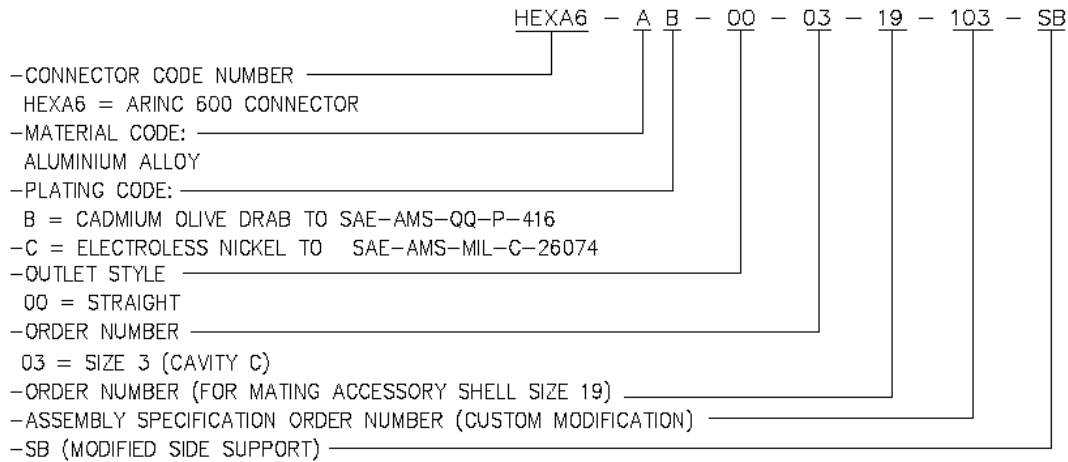
CUSTOMER DRAWING

UNLESS OTHERWISE SPECIFIED DIMENSIONS ARE IN METRIC.	DRAWN N. NAGAR	DATE 14/02/14	<div></div> <div>TYCO ELECTRONICS A TE CONNECTIVITY COMPANY</div>		
	CHECKED H. SMITH	DATE 13/03/14			
TYCO ELECTRONICS RESERVES THE RIGHT TO CHANGE THIS DRAWING AT ANYTIME. USERS SHOULD EVALUATE THE SUITABILITY OF THE PRODUCT FOR THEIR APPLICATION	APPROVED D. JONES	DATE 13/03/14	TITLE HEXASHIELD ADAPTOR FOR ARINC 600 CONNECTOR-SIZE 3- SHELL C PLAIN CLAMPING NUT		
	APPROVED	DATE			
DECIMAL TOLANCES: .XX ± 0,05 mm .X ± 0,1 mm ANGULAR TOLANCE: .X ± 1 DEG	CAD FILE NAME:		SIZE A		
	THIRD ANGLE PROJECTION: 				
			CAGE 06090	DWG. NO. HEXA6-AY-00-03-A19-1- YY-SB	REV B
DO NOT SCALE THIS DWG			SHEET 1 OF 2		

KIT DESCRIPTION

ITEM	QTY	DESCRIPTION	MATERIAL
1	1	HOUSING	ALUMINIUM ALLOY
2	2	RETENTION BARS	ALUMINIUM ALLOY
3	1	BODY ASSEMBLY – SHELL SIZE 19	
		BODY	ALUMINIUM ALLOY
		HOLDING NUT	ALUMINIUM ALLOY
		STAR (PLAIN)	ALUMINIUM ALLOY
		CONIC RING	ALUMINIUM ALLOY
		CLAMPING NUT (BACKING NUT)	ALUMINIUM ALLOY
4	4	PAN HEAD SCREW - 4-40 UNC x 3/4" LONG	STAINLESS STEEL - PASSIVATED
5	4	SPRING WASHER	STAINLESS STEEL - PASSIVATED

PART NUMBERING



APPLICATION

- This adaptor assembly is designed to be mounted on the following connectors:
ARINC 600 Plug, Shell Size 3 – Cavity C

PACKAGING

- All assemblies are supplied boxed and labelled.

NOTES!

1. Assembly is to be permanently marked with Code Identity Number and Part Number.
(e.g. 06090 HEXA6-AB-00-03-19-103-SB)

CUSTOMER DRAWING

SIZE	CAGE	DWG. NO.	REV
A	06090	HEXA6-AY-00-03-A19-1-YY-SB	B
DO NOT SCALE THIS DWG		SHEET 2 OF 2	